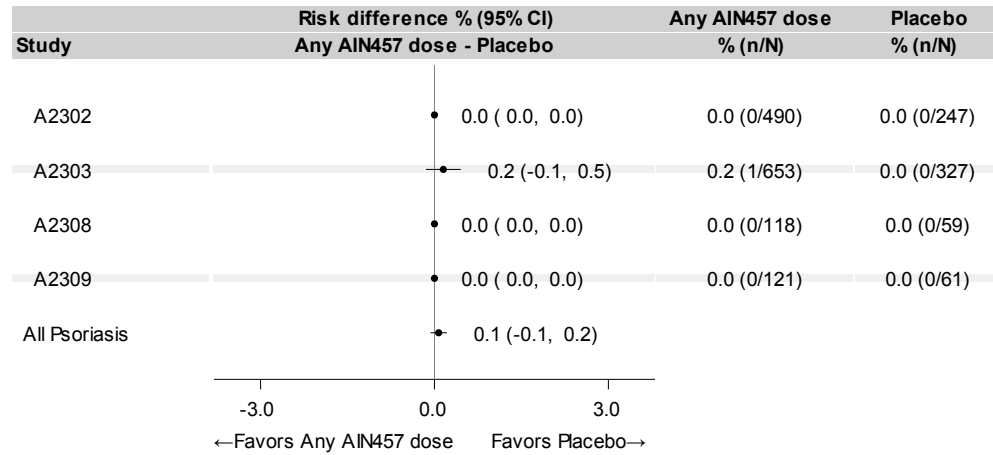
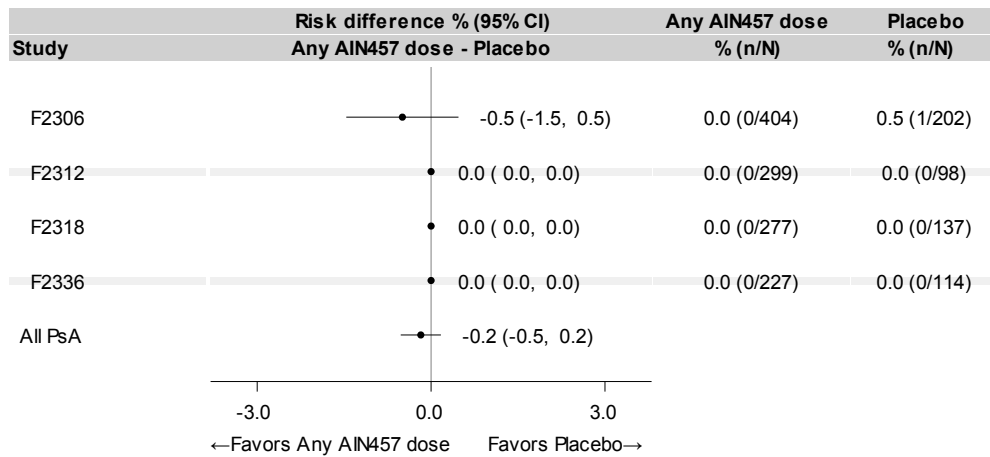


Supplementary Figure 1. Relative risks of developing CD or UC in short term secukinumab studies

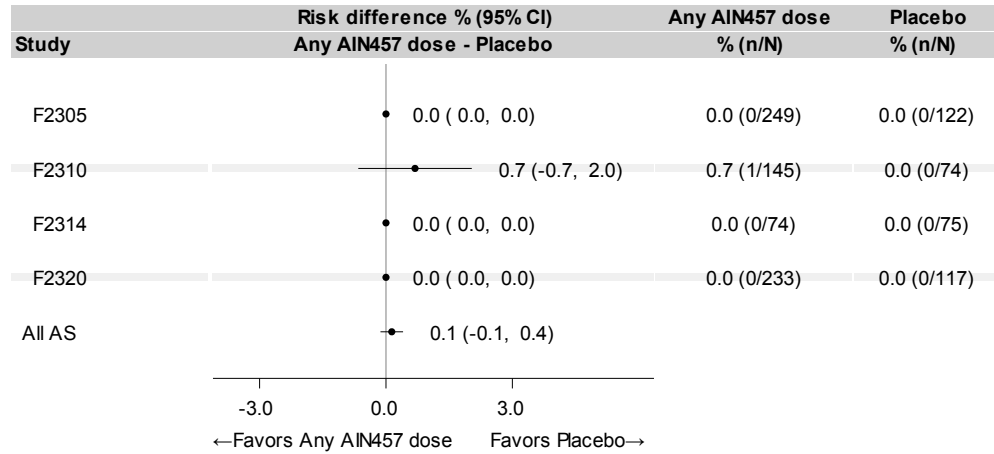
a) Risk of Crohn's Disease in PsO Phase III studies



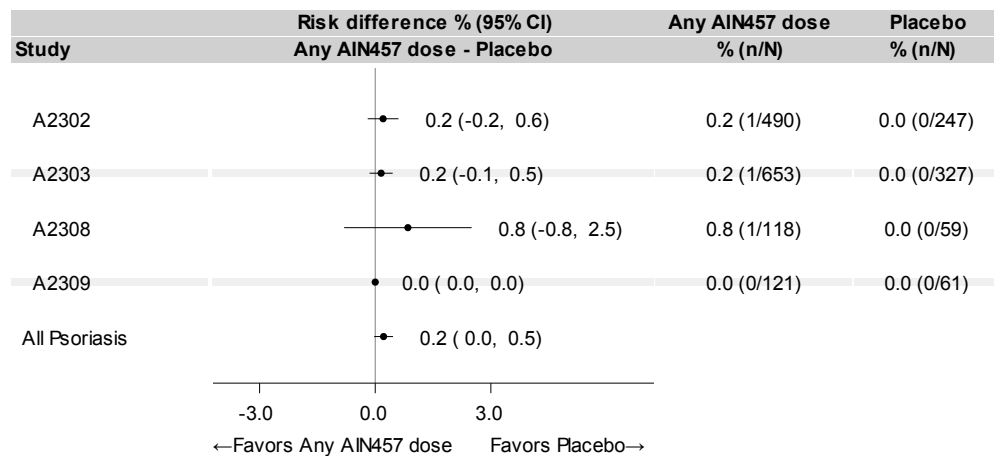
b) Risk of Crohn's Disease in PsA Phase III studies



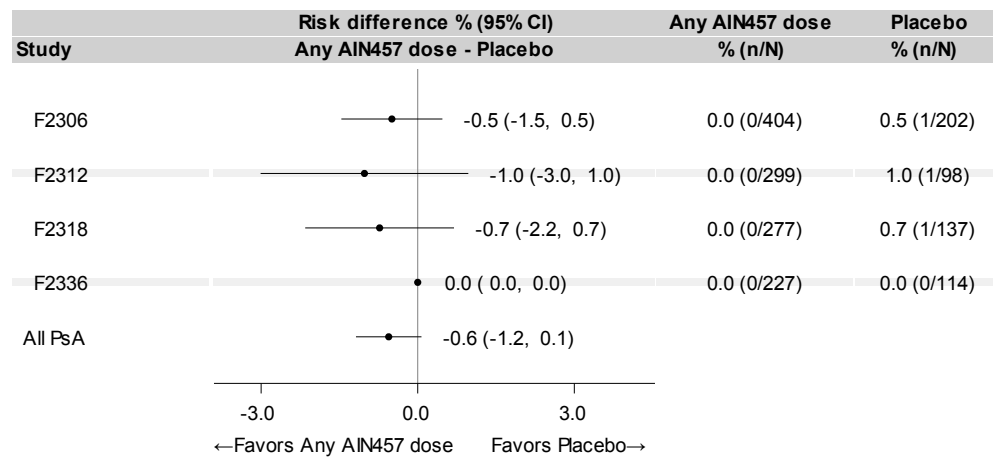
c) Risk of Crohn's Disease in AS Phase III studies



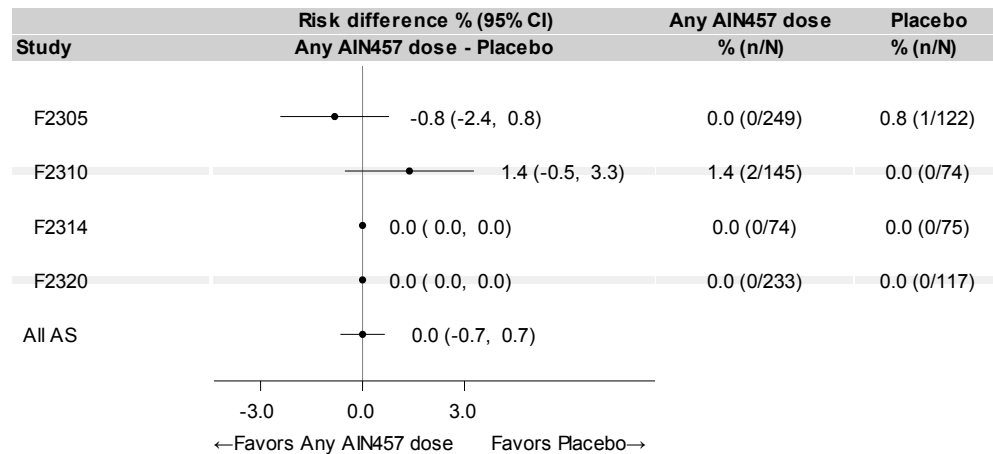
d) Risk of UC in PsO Phase III studies



e) Risk of UC in PsA Phase III studies



f) Risk of UC in AS Phase III studies



Total IBD cases (n, %) among secukinumab treated patients in the included studies: PsO (4, 0.3%), PsA (0, 0.0%), AS (3, 0.4%)
 AIN457, secukinumab; AS, ankylosing spondylitis; CD, Crohn's disease; CI, confidence interval; CD, Crohn's disease; PsA, psoriatic arthritis; PsO, psoriasis; UC, ulcerative colitis