

Figure S1. Schematic diagram illustrating the exome sequencing pipeline.

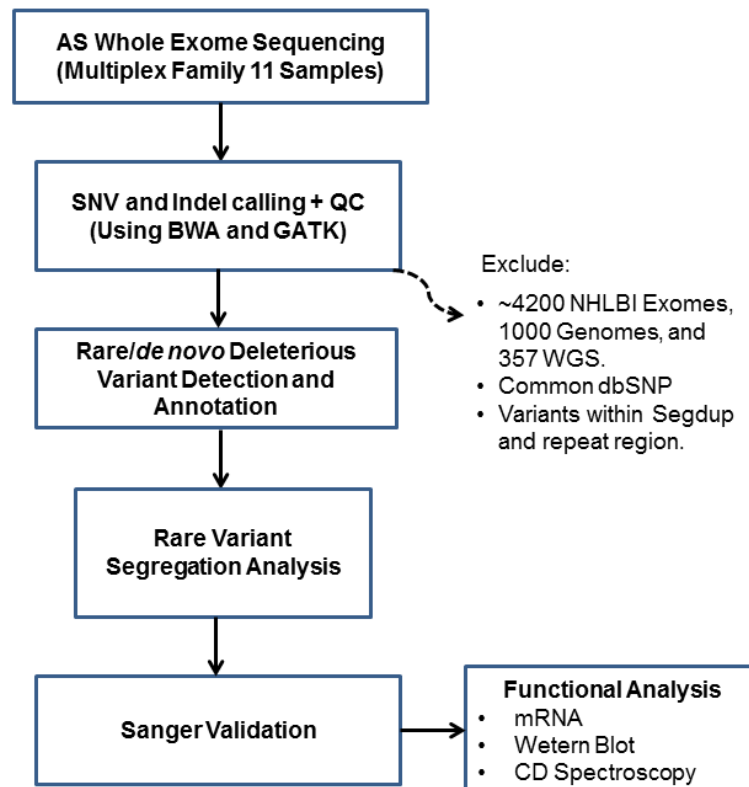


Figure S2. The SEC16A deletion does not affect its expression or co-localization with Sec31A. Immunofluorescent microscopy on acetone fixed cytoprep slides of patient-derived BCL demonstrated no change in Sec16A (green) or Sec31A (red) expression and did not affect their co-localization (merged=yellow). DAPI nuclear stain was used to indicate the juxtannuclear location of Sec16A and Sec31A

