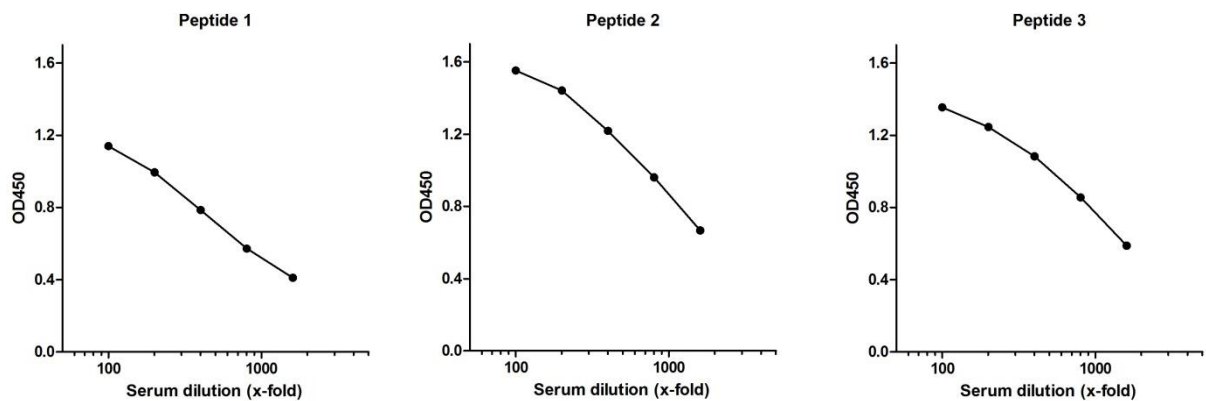


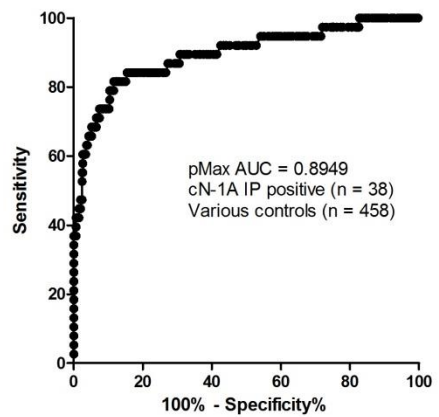
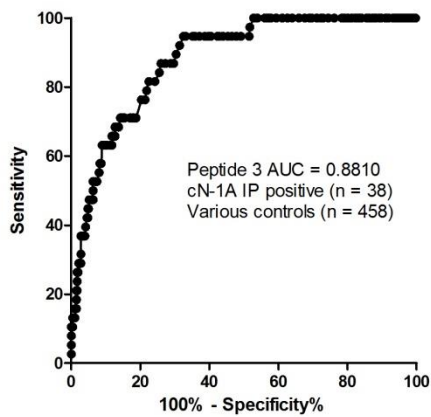
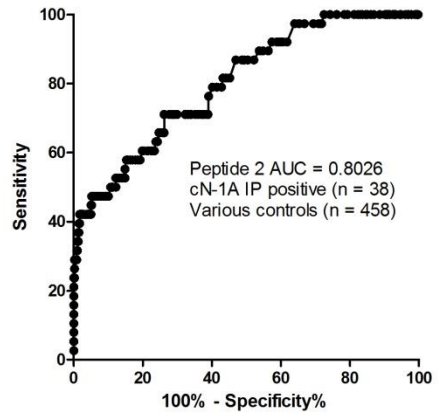
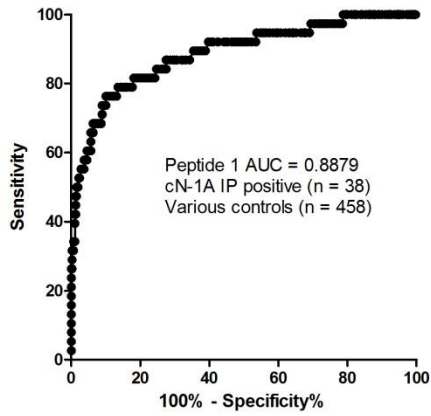
Supplementary Data

Disease-specificity of autoantibodies to cytosolic 5'-nucleotidase 1A in sporadic inclusion body myositis versus known autoimmune diseases

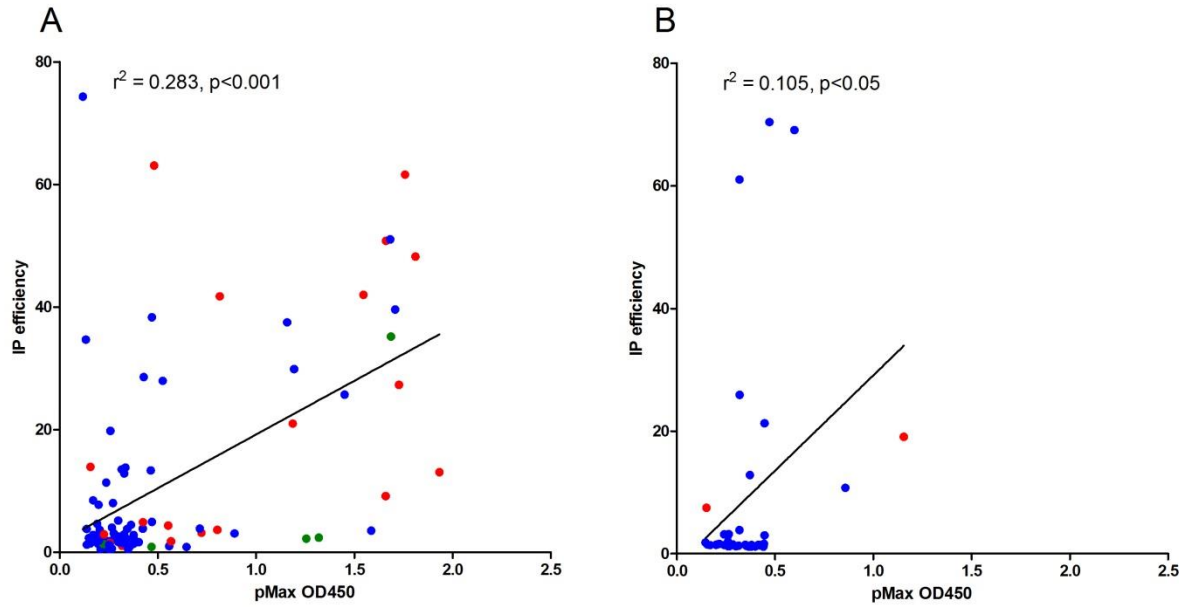
Megan K Herbert, Judith Stammen-Vogelzangs, Marcel M Verbeek, Anke Rietveld, Ingrid E Lundberg, Hector Chinoy, Janine A Lamb, Robert G Cooper, Mark Roberts, Umesh A Badrising, Jan L De Bleecker, Pedro M Machado, Michael G Hanna, Lenka Plestilova, Jiri Vencovsky, Baziel G van Engelen, Ger J M Pruijn



Supplementary Figure S1. Standard curves for the cN-1A peptide ELISAs. Data represent optical density at 450 nm (OD450) values of serially diluted serum samples for a representative patient for each of the three peptides (1: PVWEEAKIFYDNLAPKKKPKSPK; 2: SERIVKAHGLDRFFEHEKAHENK; 3: AHVPYGVAQTPRRTAPAKQAPSA).



Supplementary Figure S2. Receiver operator characteristic (ROC) curves for cN-1A immunoprecipitation positive IBM sera versus disease controls (excluding SLE and SjS). pMax refers to the highest OD450 value obtained for any of the 3 peptides.



Supplementary Figure S3. Correlation between peptide ELISA and IP efficiency for anti-cN-1A autoantibodies within the IBM group (A) and the SLE/SjS patients (B).

pMax refers to the highest OD450 value obtained for any of the 3 peptides. The peptide for which the OD450 value was highest is marked in blue for peptide 1; red for peptide 2; or green for peptide 3. IP efficiency represents the percentage of precipitated full-length cN-1A protein (relative to the input).

Supplementary Table S1. Co-occurrence of anti-cN-1A autoantibodies with other autoantibodies in SLE and Sjögren's syndrome patients*

	Total	anti-cN-1A pos.	anti-cN-1A neg.	Total	anti-cN-1A pos.	anti-cN-1A neg.
Autoantibodies to	n=50	n=15	n=35			
La	17	7	10	34%	47%	29%
Ro60	14	6	8	28%	40%	23%
56K	9	5	4	18%	33%	11%
Histones	11	3	8	22%	20%	23%
(U1)RNP	7	2	5	14%	13%	14%
Sm	4	2	2	8%	13%	6%
Rib. P proteins	2 (n=19)	1 (n=6)	1 (n=13)	11%	17%	33%

* We compared the proportion of reactive and non-reactive anti-cN-1A sera that were also reactive to other autoantibodies using two-tailed Fisher's exact tests but found no significant differences.

Supplementary Table S2. Correlation of anti-cN-1A autoantibodies with other autoantibodies in IBM patients*

	Total	anti-cN-1A pos.	anti-cN-1A neg.	Total	anti-cN-1A pos.	anti-cN-1A neg.
Autoantibodies to	n=58	n=11	n=47			
Jo-1	1	0	1	2%	0%	2%
La	6	1	5	10%	9%	11%
Ro52	10	2	8	17%	18%	17%

* We compared the proportion of reactive and non-reactive cN-1A sera that were also reactive to other autoantibodies using two-tailed Fisher's exact tests but found no significant differences.