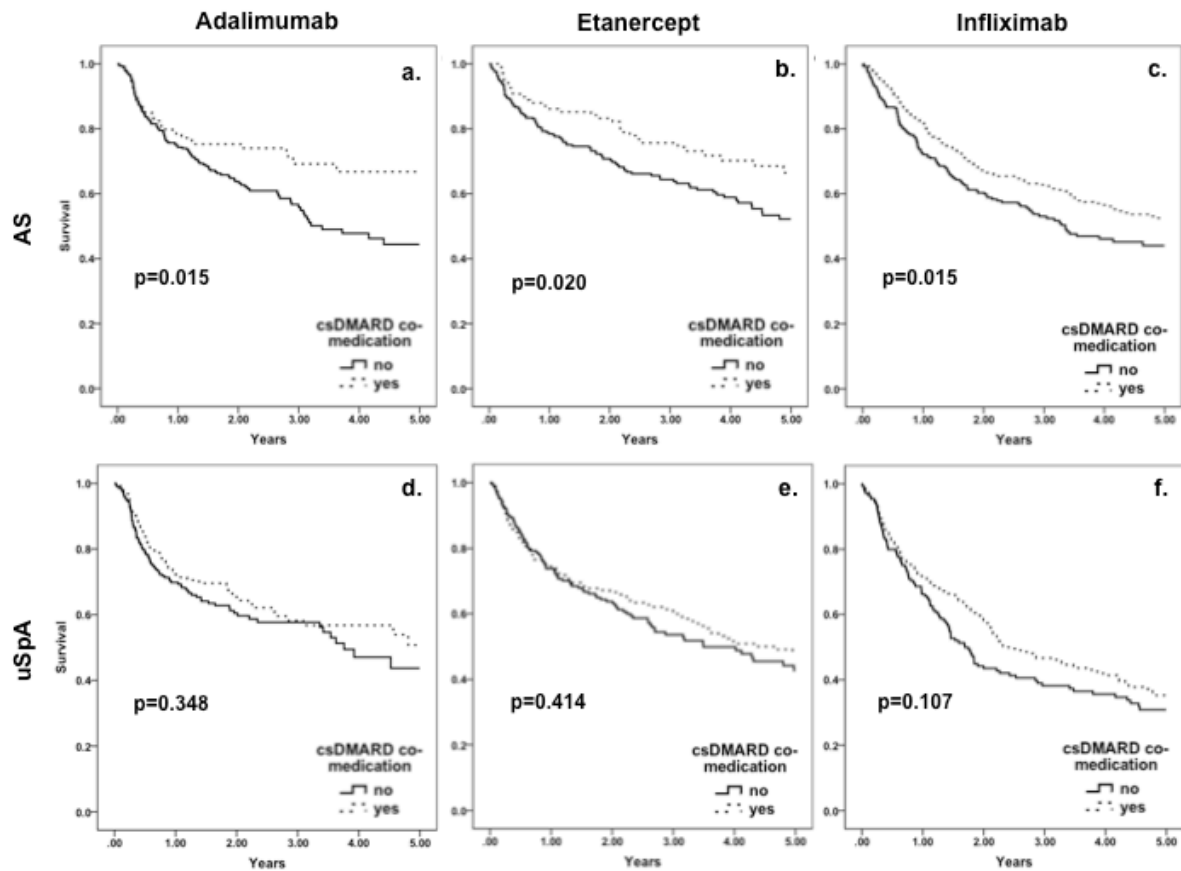


Supplemental figure S1.



Kaplan-Meier curves of 5-year drug survival comparing patients with and without csDMARD co-medication for each TNFi. a. AS adalimumab. b. AS etanercept. c. AS infliximab. d. uSpA adalimumab. e. uSpA etanercept. f. uSpA infliximab. P-values are based on log-rank test.

TNFi = tumour necrosis factor inhibitor; AS = ankylosing spondylitis; uSpA = undifferentiated spondyloarthritis; csDMARD = conventional synthetic disease modifying anti-rheumatic drug.