

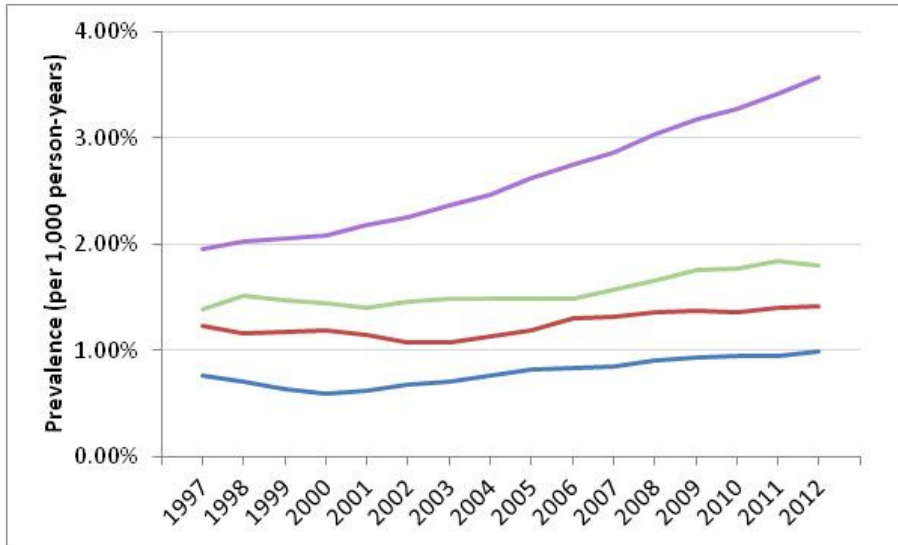
Supplementary material

Supplementary Table 1. Read codes to identify prevalent and incident cases of gout

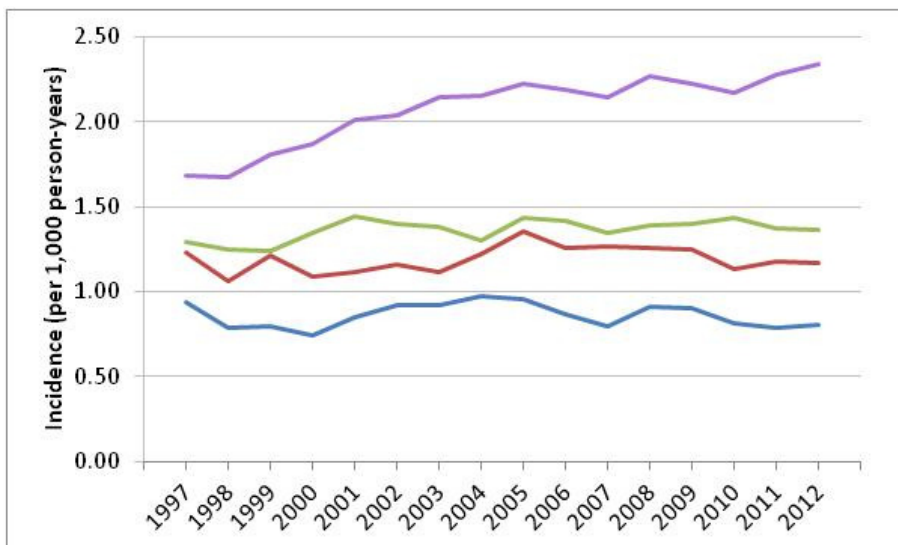
Read codes	Description	Prevalent definition	Incident definition
1443	H/O: gout	+	
6691	Initial gout assessment	+	
6692	Follow-up gout assessment	+	
6693	Joints gout affected	+	+
6695	Date gout treatment started	+	
6696	Date of last gout attack	+	
6697	Gout associated problems	+	
6698	Gout drug side effects	+	
6699	Gout treatment changed	+	
669..00	Gout monitoring	+	
669A.00	Date gout treatment stopped	+	
669Z.00	Gout monitoring NOS	+	
C34..00	Gout	+	+
C340.00	Gouty arthropathy	+	+
C341.00	Gouty nephropathy	+	+
C341z00	Gouty nephropathy NOS	+	+
C342.00	Idiopathic gout	+	+
C345.00	Gout due to impairment of renal function	+	+
C34y.00	Other specified gouty manifestation	+	+
C34y000	Gouty tophi of ear	+	+
C34y100	Gouty tophi of heart	+	+
C34y200	Gouty tophi of other sites	+	+
C34y300	Gouty iritis	+	+
C34y400	Gouty neuritis	+	+
C34y500	Gouty tophi of hand	+	+
C34yz00	Other specified gouty manifestation NOS	+	+
C34z.00	Gout NOS	+	+
G557300	Gouty tophi of heart	+	+
N023.00	Gouty arthritis	+	+
N023100	Gouty arthritis of the shoulder region	+	+
N023200	Gouty arthritis of the upper arm	+	+
N023300	Gouty arthritis of the forearm	+	+
N023400	Gouty arthritis of the hand	+	+
N023600	Gouty arthritis of the lower leg	+	+
N023700	Gouty arthritis of the ankle and foot	+	+
N023800	Gouty arthritis of toe	+	+
N023x00	Gouty arthritis of multiple sites	+	+
N023y00	Gouty arthritis of other specified site	+	+
N023z00	Gouty arthritis NOS	+	+

Supplementary figure 1. The relationships between length of data contribution and (a) crude prevalence (b) age- and sex-adjusted prevalence (c) crude incidence and (d) age- and sex-standardised incidence of gout during 1997 to 2012. (blue: 0–3; red: 4–6; green: 7–9; purple: ≥ 10 years of data contribution).

(a)

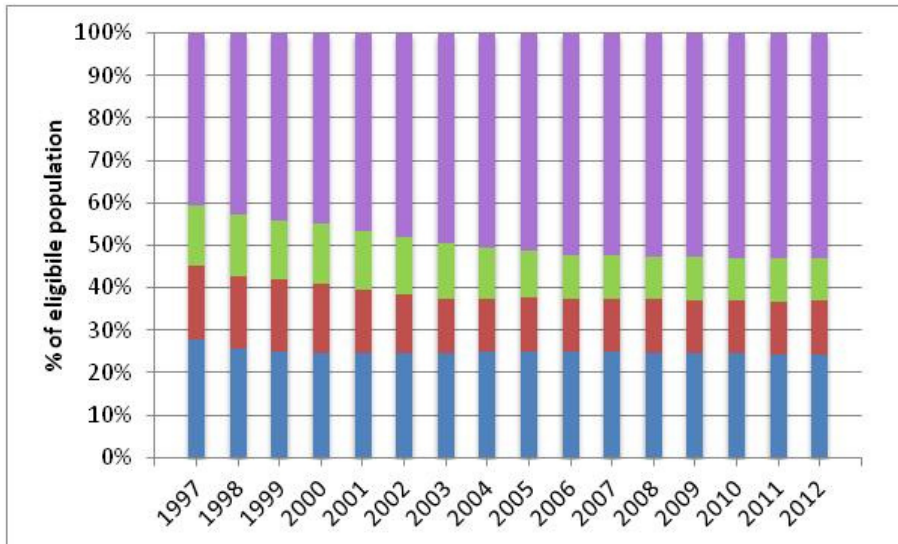


(b)



Supplementary figure 2. Proportions of (a) eligible population for prevalence and (b) at-risk population for incidence by length of data-contribution (blue: 1-3; red: 4-6; green: 7-9; purple: ≥ 10 years of data contribution)

(a)



(b)

