

Online Supplementary Table S1. Baseline characteristics of RA patients who fulfilled or did not fulfil the ADA-free criteria (Table S1A) and who agreed or refused ADA discontinuation (Table S1B)

Baseline characteristics		All n = 197 n (%)	Table S1A			All n = 75 n (%)	Table S1B		
			Fulfilled Criteria n = 75 n (%)	Not Fulfilled n = 122 n (%)	<i>P-value</i>		Discontinued ADA n = 52 n (%)	Continued ADA n = 23 n (%)	<i>P-value</i>
Biologics	Naïve	149 (75.6)	64 (85.3)	85 (69.7)	0.0163*	64 (85.3)	47 (90.4)	17 (73.9)	0.0819
	Switch	48 (24.4)	11 (14.7)	37 (30.3)		11 (14.7)	5 (9.6)	6 (26.1)	
MTX use	With ¹⁾	188 (95.4)	74 (98.7)	114 (93.4)	0.1571	74 (98.7)	51 (98.1)	23 (100)	>0.9999
	Without	9 (4.6)	1 (1.3)	8 (6.6)		1 (1.3)	1 (1.9)	0 (0)	
RF	Positive	165 (83.8)	62 (82.7)	103 (84.4)	0.8427	62 (82.7)	40 (76.9)	22 (95.7)	0.0940
	Negative	32 (16.2)	13 (17.3)	19 (15.6)		13 (17.3)	12 (23.1)	1 (4.3)	
anti-CCP	Positive	130 (66.0)	52 (69.3)	78 (63.9)	0.4372	52 (69.3)	34 (65.4)	18 (78.3)	0.1497
	Negative	34 (17.3)	11 (14.7)	23 (18.9)		11 (14.7)	10 (19.2)	1 (4.3)	
	No data	33 (16.8)	12 (16.0)	21 (17.2)		12 (16.0)	8 (15.4)	4 (17.4)	

1) MTX was dosed at 4 to 16 mg/w according to the Japanese package insert. The minimum dose of 4 mg/w was administered to the patients with safety concerns, especially when the estimated glomerular filtration rate was 50–60 mL/min. Statistical significance was assessed by Fisher's exact test. * $P < 0.05$: Fulfilled criteria vs. Not fulfilled. MTX = methotrexate; RF = rheumatoid factor; anti-CCP = antibodies against cyclic citrullinated peptides.

Online Supplementary Table S2. Baseline characteristics of RF and anti-CCP antibody in RA patients who sustained or did not sustain remission 1 year after ADA discontinuation

Baseline characteristics	All	Sustained remission	Failed remission	<i>P value</i>
RF n	52	25	27	
Mean ± S.D.	112.5 ± 144.4	156.3 ± 184.6	72.0 ± 76.9	0.1558
Median (U/mL)	61.3	72.6	51.9	
Positive n (%)	40 (76.9)	20 (80.0)	20 (74.1)	0.7460
Negative n (%)	12 (23.1)	5 (20.0)	7 (25.9)	
Anti-CCP n	44	22	22	
Mean ± S.D.	58.5 ± 44.9	61.2 ± 43.4	55.8 ± 47.2	0.5261
Median (U/mL)	78.3	82.0	76.2	
Positive n (%)	34 (65.4)	18 (72.0)	16 (59.3)	0.7205
Negative n (%)	10 (19.2)	4 (16.0)	6 (22.2)	
No data n (%)	8 (15.4)	3 (12.0)	5 (18.5)	

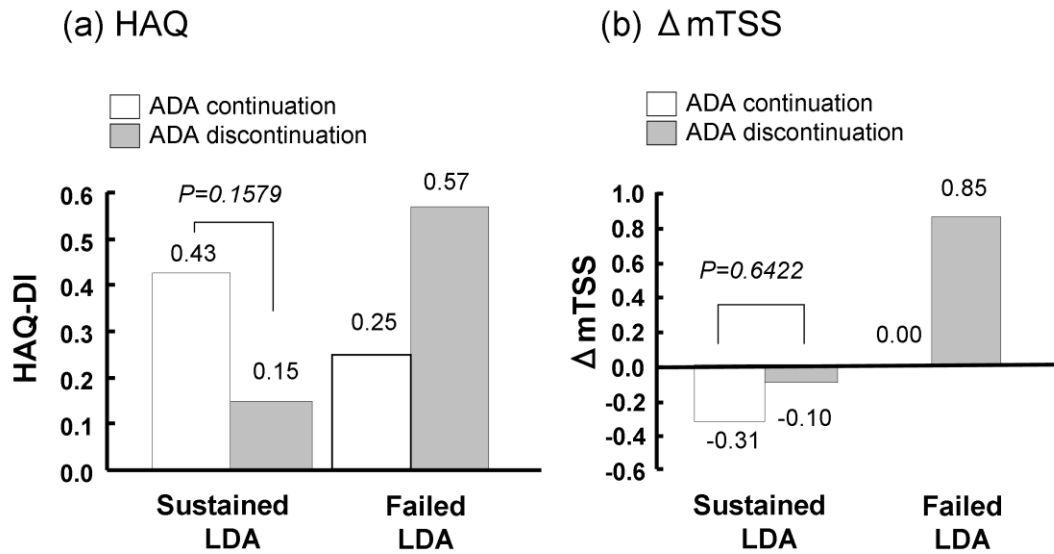
Statistical significance was assessed by the Wilcoxon rank sum test for continuous data and Fisher's exact test for categorical data between sustained remission vs. failed remission. RF = rheumatoid factor; anti-CCP = antibodies against cyclic citrullinated peptides.

Figure legends

Online Supplementary Figure S1. Comparison of functional and structural outcomes between the ADA continuation and discontinuation groups

The HAQ and Δ mTSS in patients with sustained LDA (n = 31) or failed LDA (n = 21) 1 year after ADA discontinuation when evaluated by DAS28-4ESR were compared with those in patients with sustained LDA (n = 21) or failed LDA (n = 2) in the ADA continuation group. *P* values by Fisher's exact test.

Online Supplementary Figure S1



Online Supplementary Figure S2. Remission rates on Boolean evaluation

The Boolean remission rate 1 year after ADA discontinuation (n = 52) was compared with that in the ADA continuation group (n = 23). $P > 0.9999$ by Fisher's exact test.

Online Supplementary Figure S2

