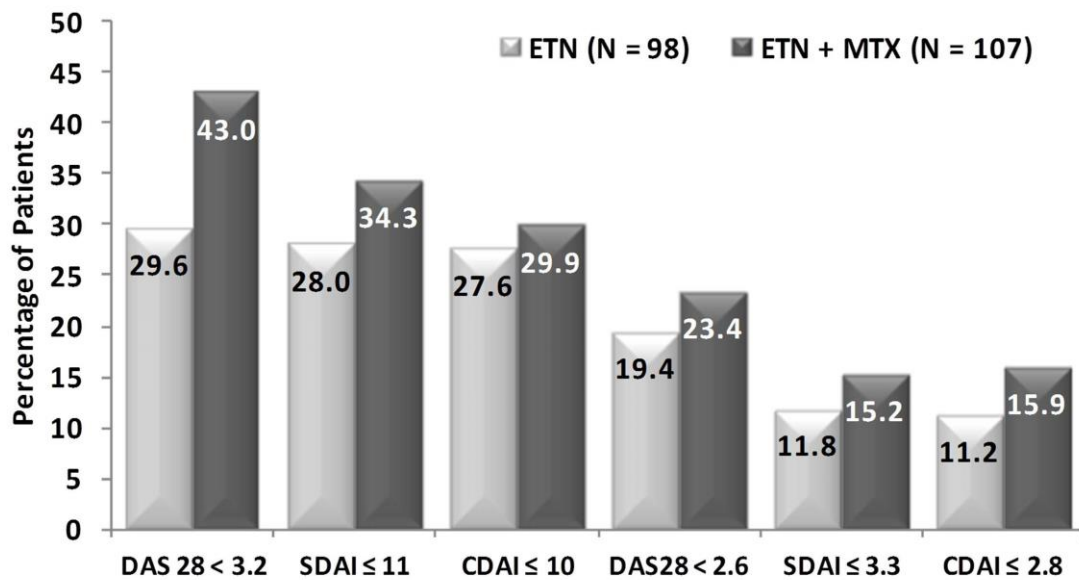


## Supplementary Figures

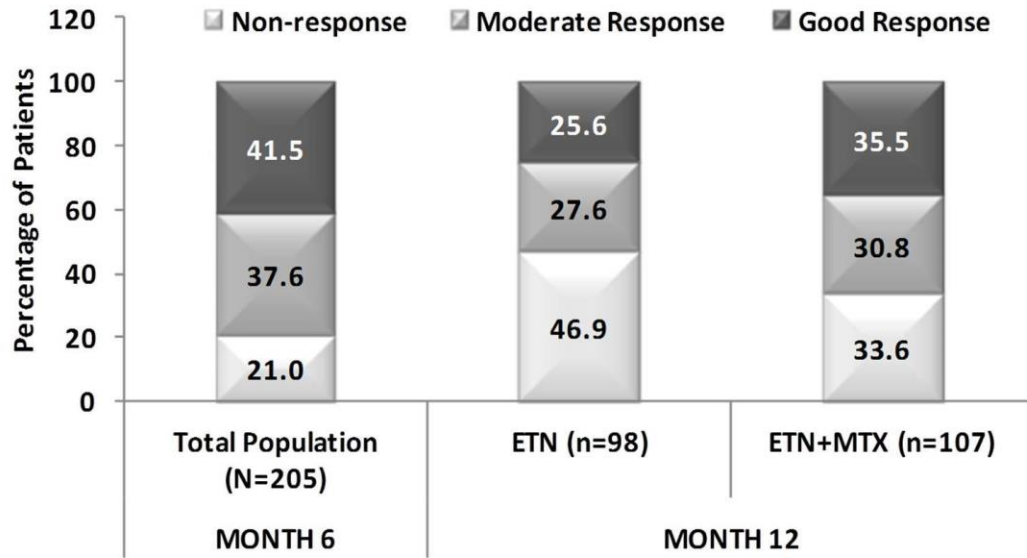
Supplementary Fig. 1. Proportion of Patients Achieving Low Disease Activity and Remission at Month 12



Last observation carried forward imputation for the intent to treat analysis set (N = 205); Percentages are based on the number of full analysis set subjects in each group at each visit with non-missing values. DAS28 is calculated with ESR; CDAI = Clinical Disease Activity Index; DAS = disease activity score; SDAI = Simplified Disease Activity Index

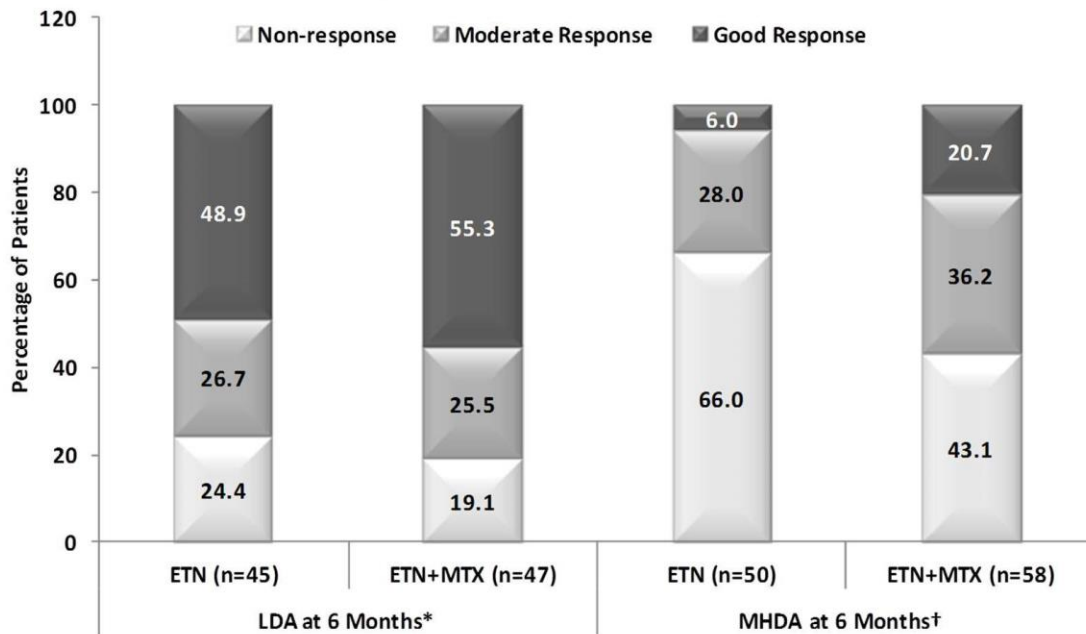
**Supplementary Fig. 2**

**a. EULAR Response (Month 6 Randomization & Month 12)**



Last observation carried forward imputation for the intent to treat analysis set (N = 205); DAS28 is calculated with ESR; Response is defined by EULAR criteria for good, moderate, or non-response; EULAR = European League Against Rheumatism

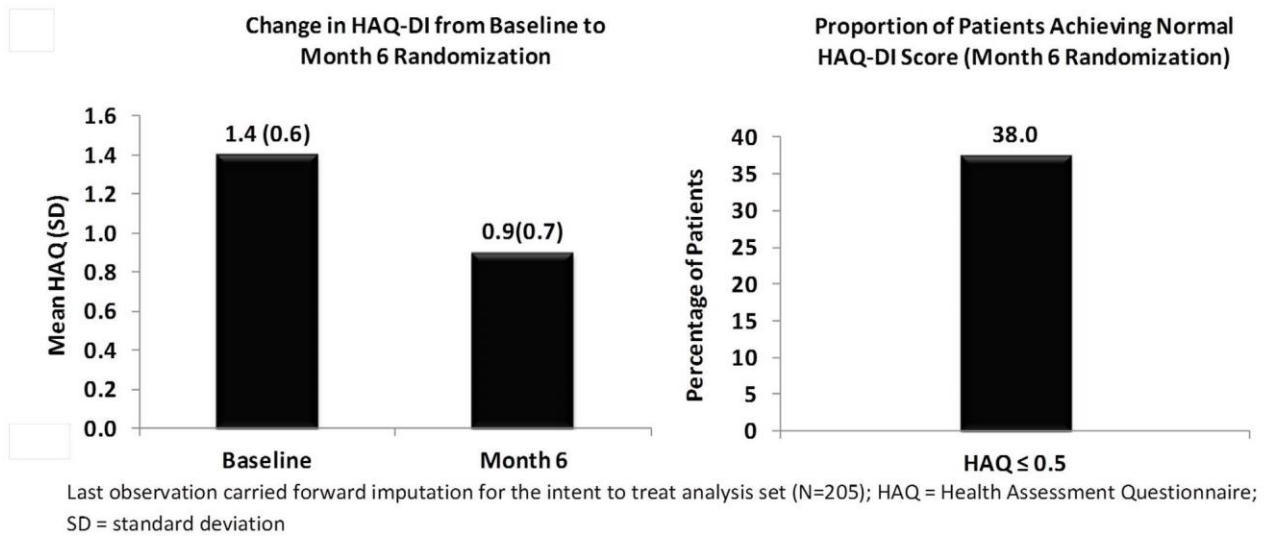
**b. Proportion of Patients Achieving EULAR Response (Month 12)**



\* LDA = Low Disease Activity (DAS28 < 3.2); †MHDA = Moderate/High Disease Activity (DAS28 ≥ 3.2); Last observation carried forward imputation for the intent to treat analysis set (N = 205); DAS = disease activity score; ETN = etanercept; EULAR = European League Against Rheumatism; MTX = methotrexate

**Supplementary Fig. 3. HAQ-DI scores at month 6 and month 12**

**a. Change in HAQ-DI and Proportion With Normal HAQ-DI (Month 6 Randomization)**



**b. Change in HAQ-DI (Month 6 to 12) and Proportion With Normal HAQ-DI Score (Month 12)**

