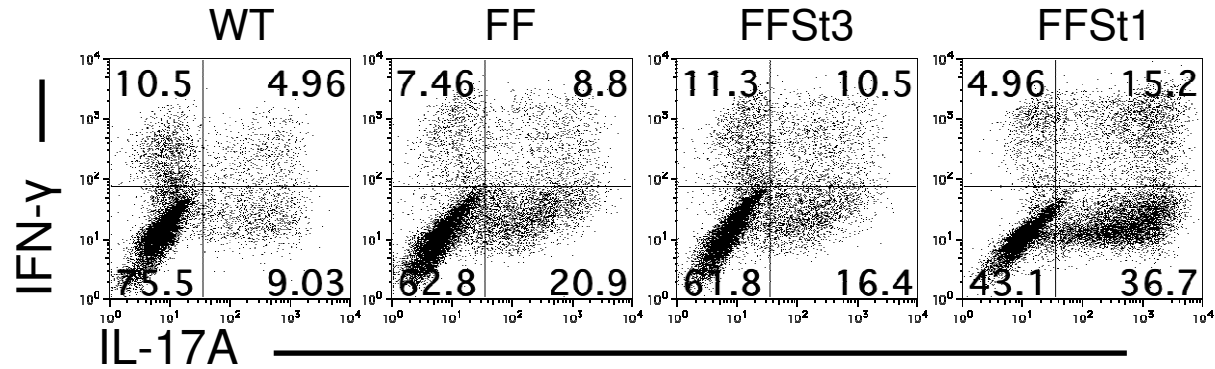
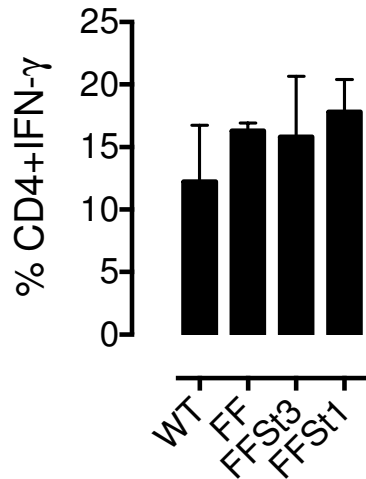
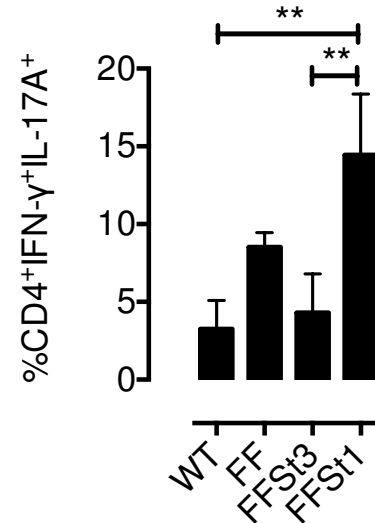


A**B****C****Supplementary figure S1:****No difference in the development of IFN-γ producing T_H-1 cells in the *gp130* compound mice.**

Representative flow cytometry dot plots of IFN-γ and IL-17A gated on CD4⁺ T-helper cells from WT, *gp130*^{F/F} (FF), *gp130*^{F/F}:*Stat3*^{+/-} (FFSt3) and *gp130*^{F/F}:*Stat1*^{-/-} (FFSt1) mice cultured as in figure 1. (B-C) Graphed percentages of IFN-γ producing CD4⁺ T-cells (B) and IFN-γ⁺IL-17A⁺ double producing CD4⁺ T-cells (C) are shown. Data are presented as mean ± SD from 3 independent experiments.

Genotype	Proportion of CD4 ⁺ cells (gated) secreting:	
	IFN- γ (T _H -1)	IL-17A (T _H -17)
WT	2.5 \pm 0.7959	1.179 \pm 0.5005
<i>gp130^{F/F}</i>	1.131 \pm 0.1149	0.629 \pm 0.2503
<i>gp130^{F/F}:Stat1^{-/-}</i>	2.302 \pm 0.4998	1.328 \pm 0.3206

Supplementary Table S1

Percentages of peripheral IFN- γ and IL-17A producing CD4⁺ T-helper cells in AIA challenged *gp130* compound mice.

AIA was established in WT, *gp130^{F/F}* and *gp130^{F/F}:Stat1^{-/-}* mice and the percentage of CD4⁺ T-cells producing IFN- γ (T_H-1) and IL-17A (T_H-17) determined by flow cytometry of inguinal lymph nodes at 10 days post arthritis induction, as in Figure 2. Percentages are expressed as mean \pm SD of IFN- γ and IL-17A producing cells gated on CD4⁺ T-cells.

Genotype	Arthritic index (AI)	
	Day 28	Day 35
WT	2.333 ± 0.665	3.250 ± 1.339
<i>gp130^{F/F}</i>	5.833 ± 0.629	5.757 ± 0.646

Supplementary table S2

Exacerbated gp130-driven arthritis.

Severity of inflammatory arthritis (Arthritic index; AI) for WT and *gp130^{F/F}* mice are shown during the end stage of disease (d28 and d35) from histopathological evaluation of knee joint sections. Data is represented as mean ± SD (**P* = 0.0119 day 28; **P* = 0.0286 day 35).