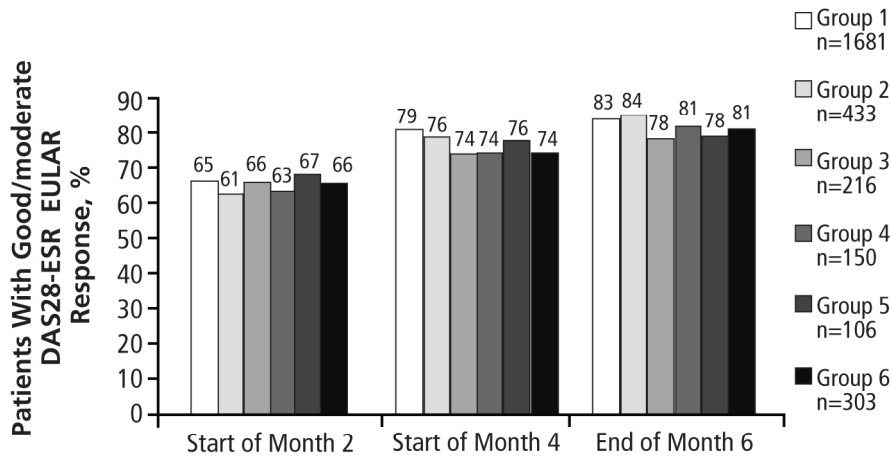
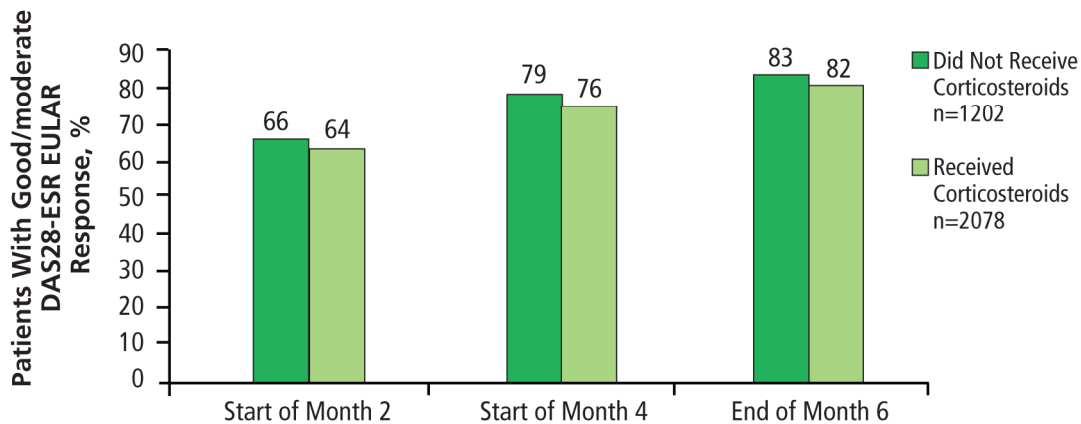


Supplemental Figure 1. Percentage of patients in Part 1 with good or moderate EULAR DAS28-ESR response by concomitant DMARD background (A) and concomitant corticosteroid use (B).

A



B

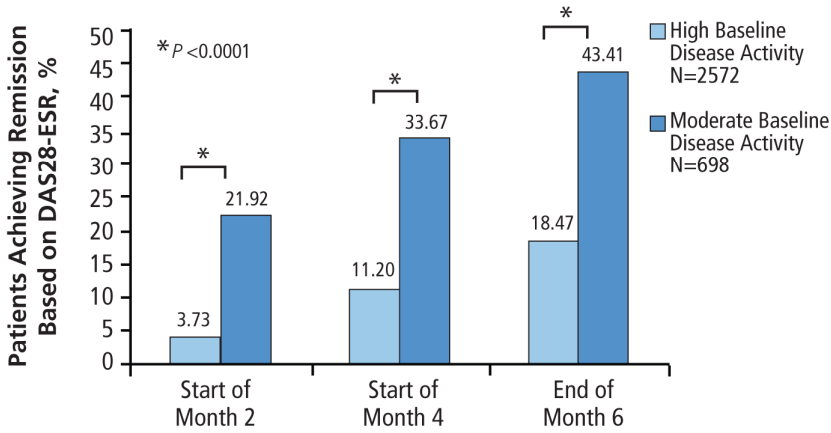


A: Group 1: MTX only; Group 2: MTX + hydroxychloroquine, chloroquine, chloroquine phosphate; Group 3: MTX + leflunomide; Group 4: MTX + sulfasalazine; Group 5: MTX + hydroxychloroquine, chloroquine, chloroquine phosphate + sulfasalazine; Group 6: leflunomide only. Patients taking other DMARD combinations were not included in this analysis.

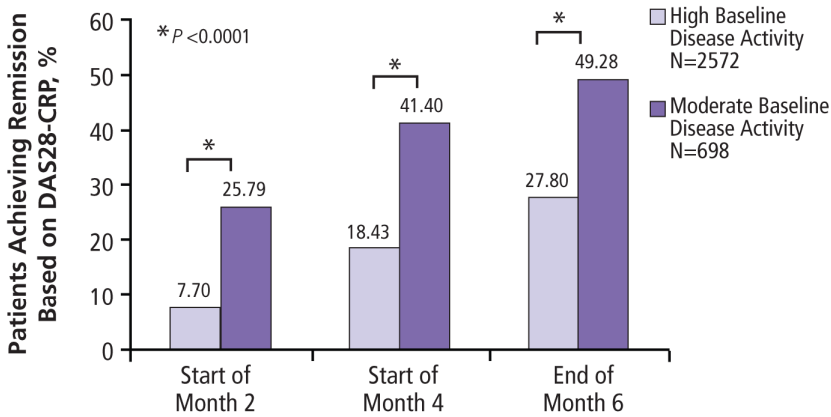
B: DAS28 = 28-joint disease activity score; DMARD = disease-modifying antirheumatic drug; ESR = erythrocyte sedimentation rate; EULAR = European League Against Rheumatism; MTX = methotrexate.

Supplemental Figure 2. Percentage of patients with high or moderate disease activity at baseline who attained DAS28-ESR remission (A), DAS28-CRP remission (B), and SDAI remission (C) at months 2, 4, and 6.^a

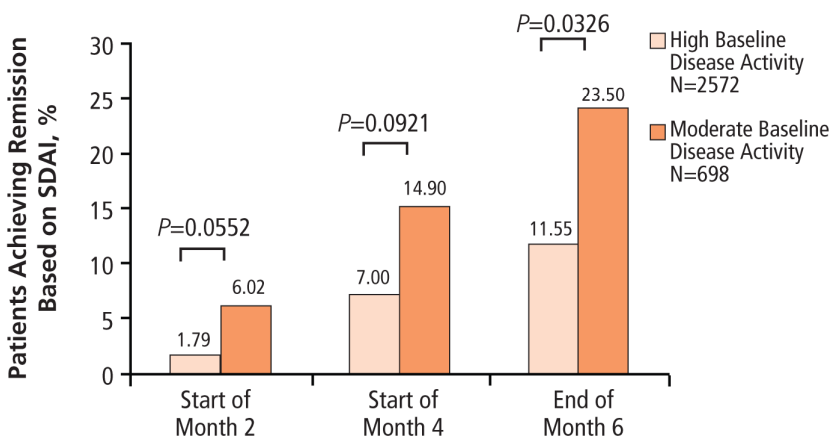
A



B



C

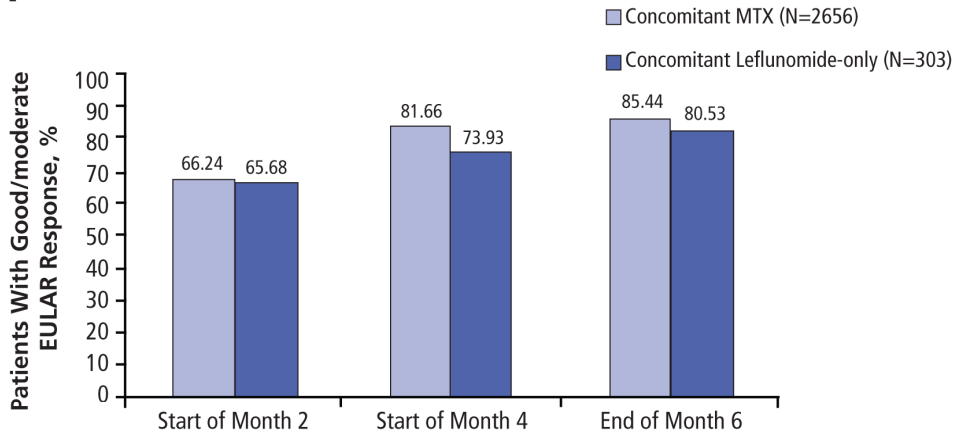


^aHigh baseline disease activity defined as DAS28-ESR >5.1; moderate baseline disease activity defined as DAS28-ESR \geq 3.2 and \leq 5.1. DAS28-ESR remission was defined as DAS28-ESR <2.6. DAS28-CRP remission was defined as DAS28-CRP <2.6. SDAI remission was defined as SDAI \leq 3.3.

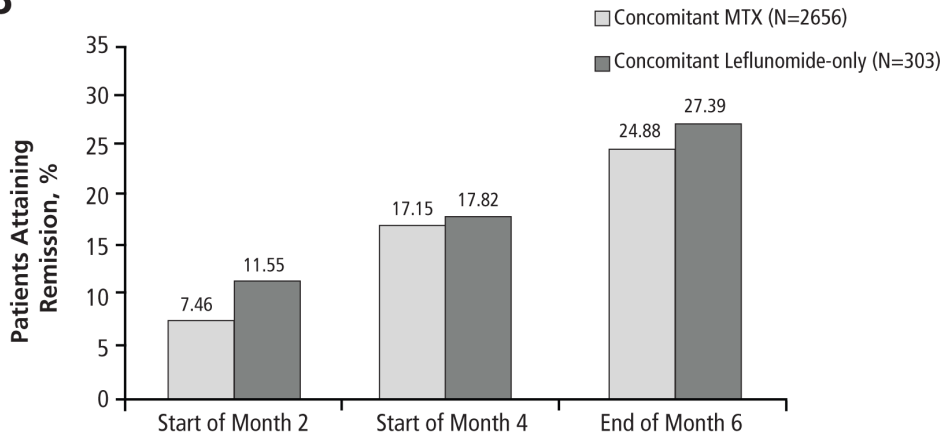
CRP = C-reactive protein; DAS28 = 28-joint disease activity score; ESR = erythrocyte sedimentation rate; SDAI = Simplified Disease Activity Index.

Supplemental Figure 3: Concomitant MTX and concomitant leflunomide-only patient subgroups:^a percentage of patients who achieved good or moderate EULAR response (A) and remission in Part 1 (B).^b

A



B



^aThe concomitant MTX subgroup includes any patients in the efficacy-evaluable population who received concomitant MTX, including those receiving concomitant MTX+leflunomide

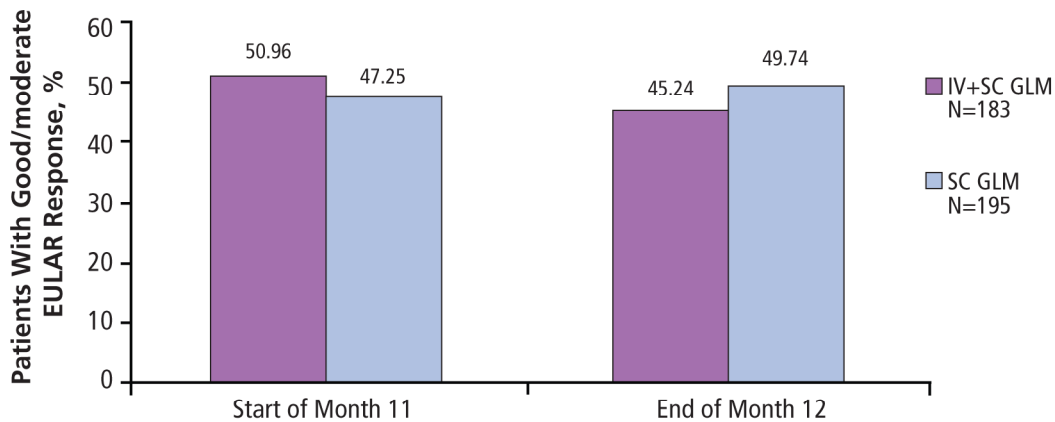
(n=282), in Part 1. The concomitant leflunomide-only subgroup includes any patients in the safety population who received only concomitant leflunomide during Part 1.

^bGood/moderate EULAR response defined as DAS28-ESR improvement of >1.2 from any baseline score or an improvement of 0.6-1.2 from a baseline score of ≤5.1. Remission defined as DAS28-ESR <2.6.

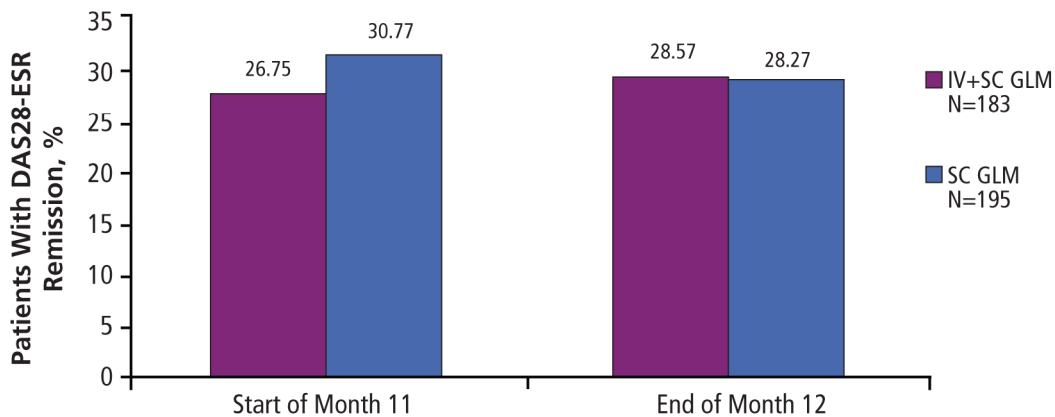
DAS28 = 28-joint disease activity score; ESR = erythrocyte sedimentation rate; EULAR = European League Against Rheumatism; MTX = methotrexate.

Supplemental Figure 4: Concomitant MTX subgroup:^a percentage of patients in Part 2 who achieved good or moderate EULAR DAS28-ESR response (A) and DAS28-ESR remission (B).

A



B



DAS28 = 28-joint disease activity score; ESR = erythrocyte sedimentation rate; EULAR = European League Against Rheumatism; GLM = golimumab; IV = intravenous; MTX = methotrexate; SC = subcutaneous.

^aThe concomitant MTX subgroup includes all patients who received concomitant MTX in Part 2.