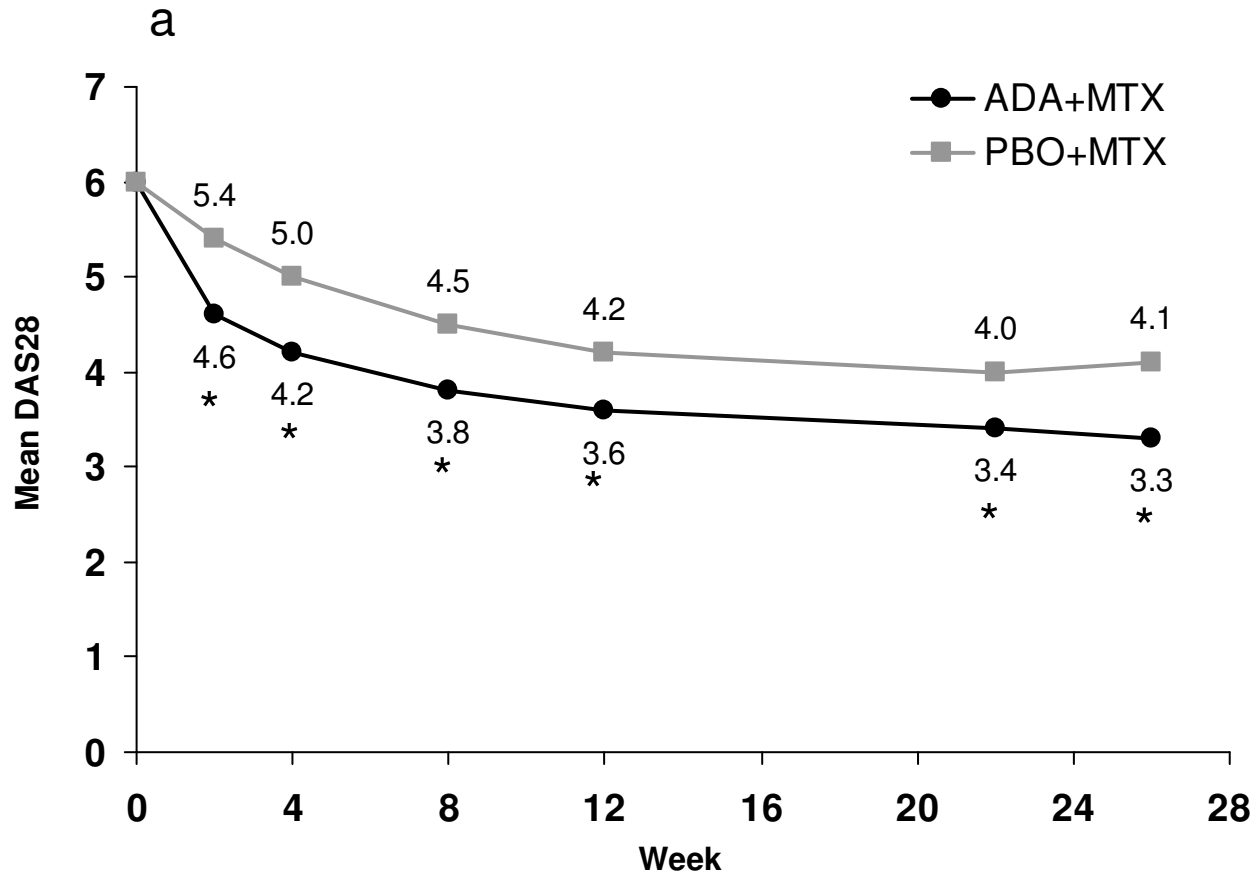


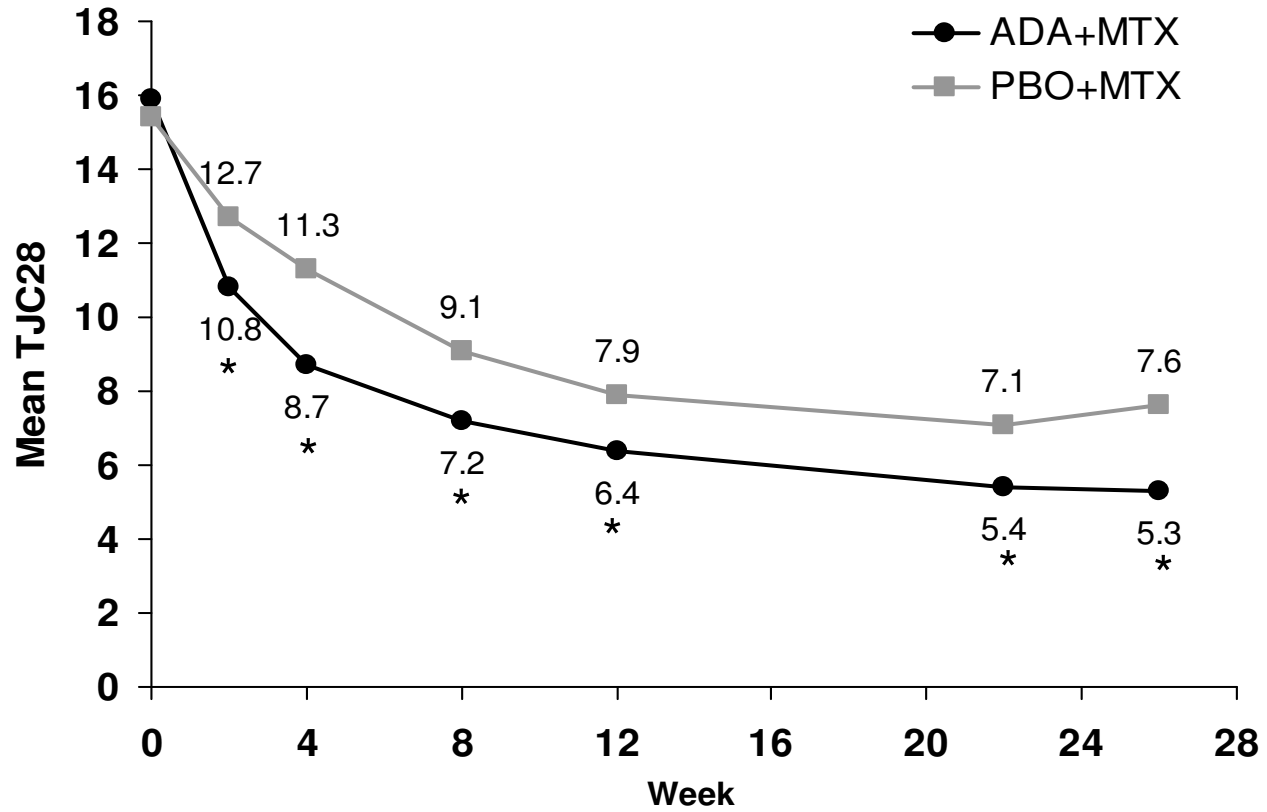
Supplemental Figure 2a. Mean DAS28(CRP) through 26 weeks



ADA+MTX, n:	507	486	504	505	505	505	505
PBO+MTX, n:	505	483	496	498	498	499	499

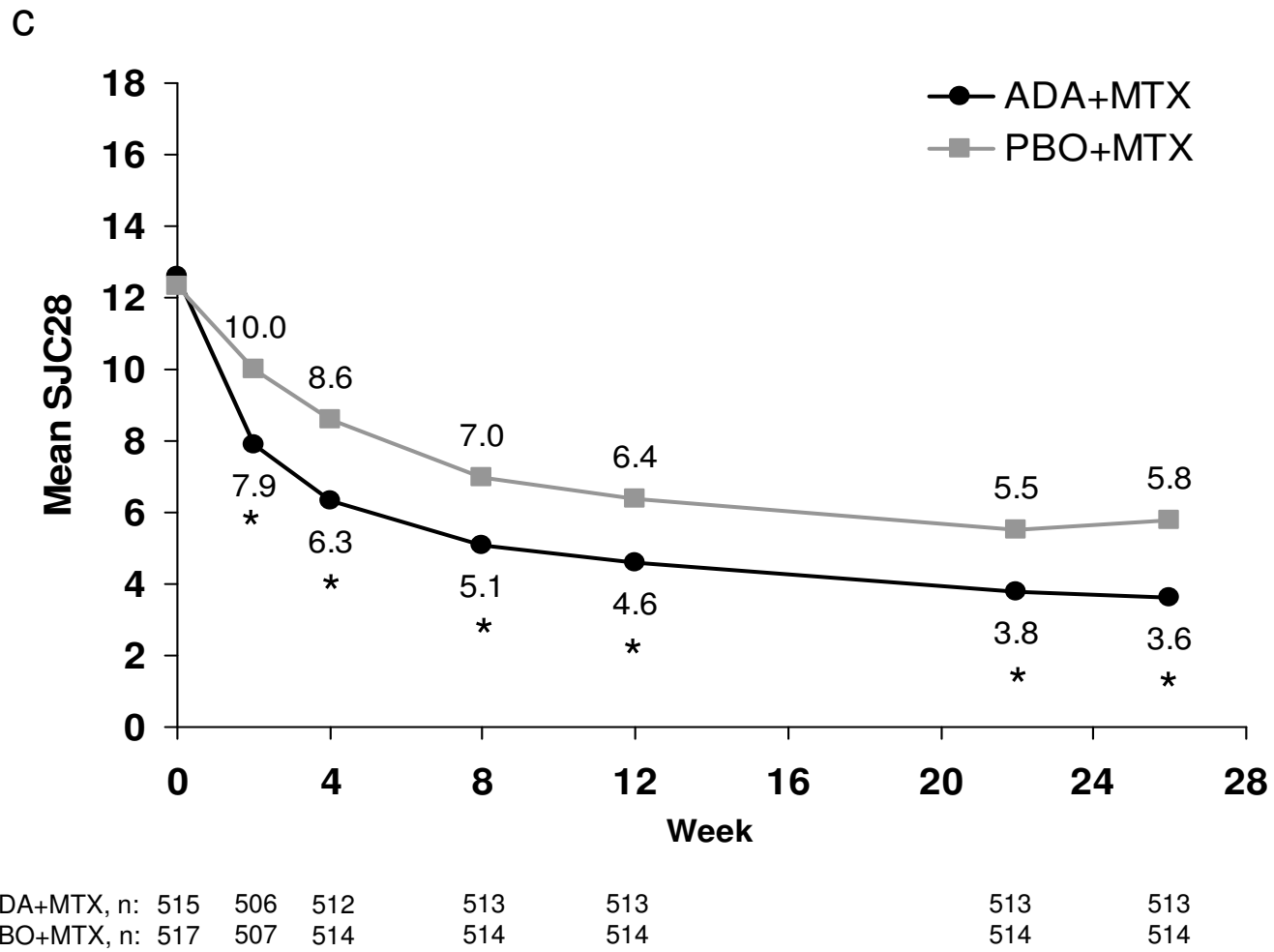
Supplemental Figure 2b. Mean TJC28 through 26 weeks

b



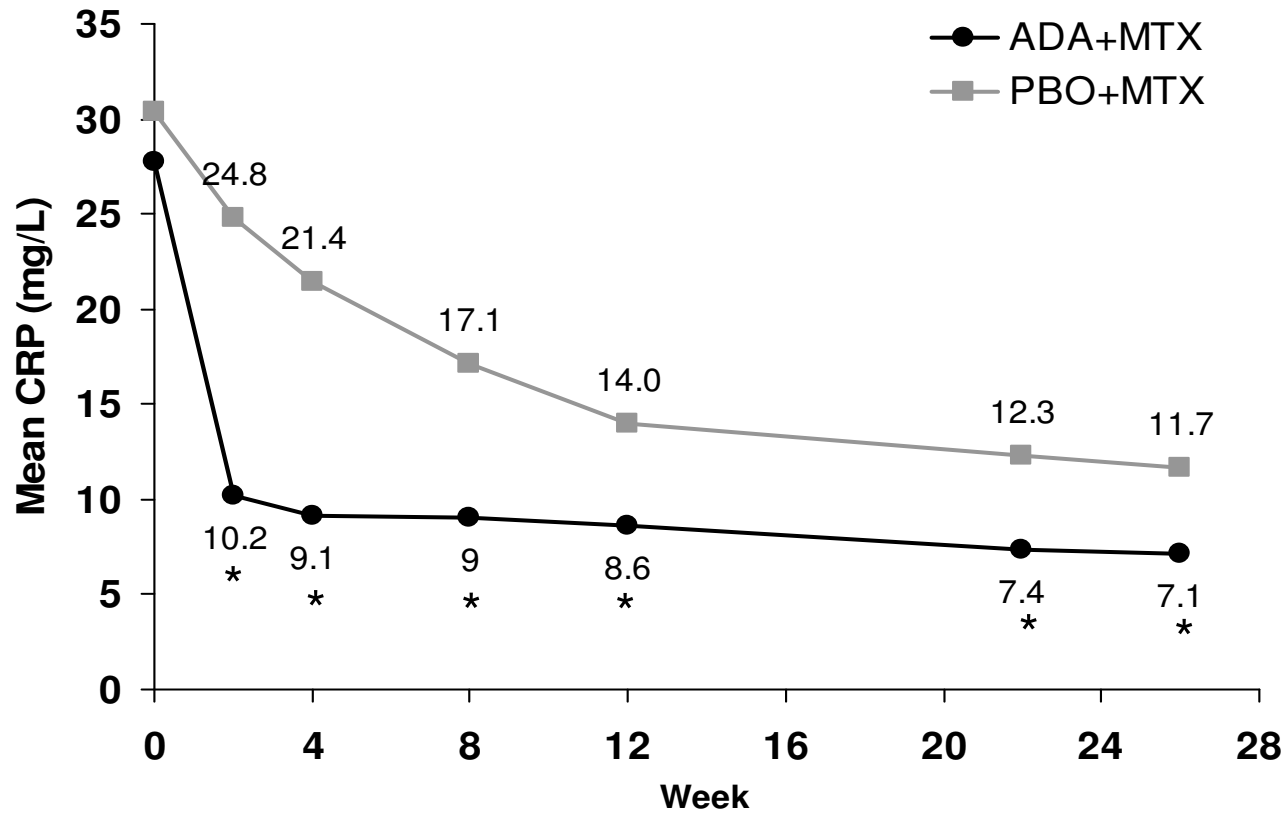
ADA+MTX, n:	515	506	512	513	513	513	513
PBO+MTX, n:	517	507	514	514	514	514	514

Supplemental Figure 2c. Mean SJC28 through 26 weeks



Supplemental Figure 2d. Mean CRP through 26 weeks

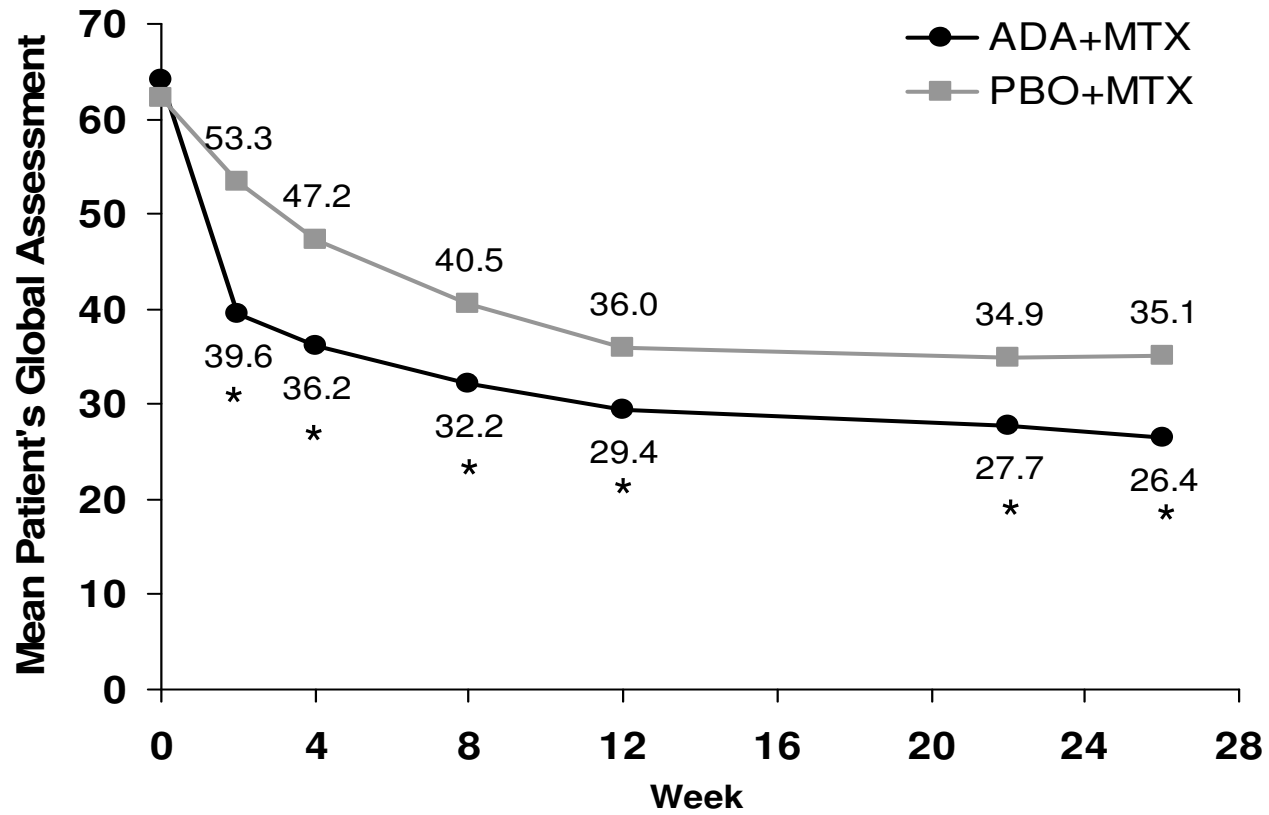
d



ADA+MTX, n:	515	497	507	499	494	470	454
PBO+MTX, n:	517	499	497	486	482	465	446

Supplemental Figure 2e. Mean Patient's Global Assessment through 26 weeks

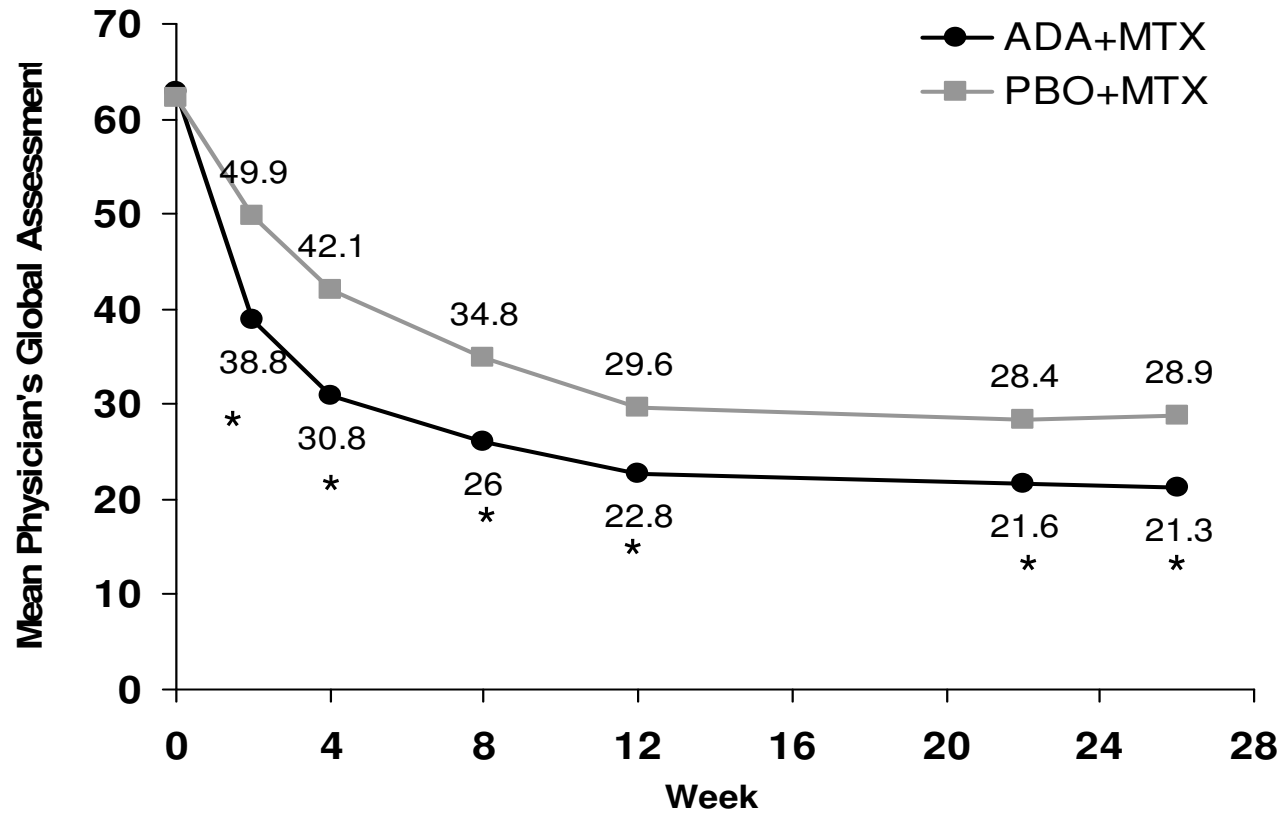
e



ADA+MTX, n:	515	507	512	513	513	513	513
PBO+MTX, n:	517	510	513	513	513	513	513

Supplemental Figure 2f. Mean Physician's Global Assessment through 26 weeks

f



ADA+MTX, n:	515	504	509	510	510	510	510
PBO+MTX, n:	517	507	513	513	513	513	513