

Online Supplement for

Ixekizumab, an Interleukin-17A Specific Monoclonal Antibody, for the Treatment of Biologic-Naive Patients with Active Psoriatic Arthritis: Results from the 24-Week Randomized, Double-Blind, Placebo- and Active (Adalimumab)-Controlled Period of the Phase 3 Trial SPIRIT-P1

Table of Contents

SPIRIT-P1: List of Principal Investigators and Participating Study Sites..... 3

Study Design and Patient Population..... 11

Treatment and Randomization..... 12

American College of Rheumatology (ACR) Response Criteria 15

Leeds Dactylitis Index-Basic (LDI-B)..... 15

Study Power 16

Additional Statistical Methods..... 16

Efficacy Data: ACR Core Set 17

References..... 18

Supplementary Figure S1. Study Design. 19

Supplementary Figure S3. Patient Disposition From Study Treatment During the Double-Blind Treatment Period for the Intent-to-Treat Population. 21

Supplementary Table S1. Mean change from baseline in the individual components of the ACR Core Set 25

Supplemental Table S2. Adverse Events of Injection Site Reactions During the 24-Week Double-Blind Period of the SPIRIT-P1 Study..... 26

Supplemental Table S3. Adverse Events of Infection (Special Safety Topic) During the 24-Week

Double-Blind Period of the SPIRIT-P1 Study..... 27

Supplementary Table S4. Effect on dactylitis symptoms as measured by mean change from baseline in

LDI-B score 29

SPIRIT-P1: List of Principal Investigators and Participating Study Sites

MHAT "Trimontium", OOD, Plovdiv, Bulgaria

Mariela Geneva-Popova

ReumaClinic, Genk, Belgium

Piet Geusens

MHAT-Plovdiv AD, Plovdiv, Bulgaria

Ivan Goranov

MHAT "Kaspela", EOOD, Plovdiv, Bulgaria

Dimitar Penev

NMTH "Tsar Boris III", Sofia, Bulgaria

Antoaneta Toncheva

Medical Center "Nov Rehabilitatsionen Tsentar", EOOD, Stara Zagora, Bulgaria

Stoyanka Vladeva

DCC 'Sv. Pantaleymon' OOD, Pleven, Bulgaria

Kiril Yablanski

Groupe de recherche en maladies osseuses Inc., Quebec, Quebec, Canada

Louis Bessette

Toronto Western Hospital, Toronto, Ontario, Canada

Vinod Chandran

Rheumatology Research Associates, Ottawa, Ontario, Canada

Robert McKendry

Probit Medical Research, Waterloo, Ontario, Canada

Kim Papp

CCBR Czech Brno, s.r.o., Brno, Czech Republic

Michaela Blahova

Artroscan s.r.o., Ostrava – Trebovice, Czech Republic

Ladislav Bortlik

Revmatologie Bruntal, s.r.o., Bruntal, Czech Republic

Dagmar Galatikova

CCBR Czech, a.s, Pardubice, Czech Republic

Tomas Hala

CCBR - Prague – CZ, Praha 3, Czech Republic

Jolana Hejlova

Revmatologie s.r.o., Brno, Czech Republic

Petr Nemecek

Poliklinika Lipa, Praha 5, Czech Republic

Lucie Podrazilova

REVMACLINIC s.r.o, Brno, Czech Republic

Vlastimil Racek

Mediscan Group, s.r.o., Praha 11, Czech Republic

Jan Rosa

Revmatologický ústav, Praha 2, Czech Republic

Liliana Sedova

Revmatologická ambulance, Praha 4 Nusle, Czech Republic

Zuzana Urbanova

PV - Medical, s.r.o., Zlin, Czech Republic

Petr Vitek

East Tallinn Central Hospital, Tallinn, Estonia

Margus Pail

North Estonia Medical Centre Foundation, Tallinn, Estonia

Eve-Kai Raussi

OÜ Innomedica, Tallinn, Estonia

Jaak Tälli

Center for Clinical and Basic Research, Tallinn, Estonia

Ivo Valter

CHU de Toulouse - Hôpital Purpan, Toulouse, France

Alain Cantagrel

Hôpital Madeleine - CHR Orléans, Orleans, France

Eric Lespessailles

CHU Nantes - Hôtel Dieu, Loire Atlantique, France

Yves Maugars

Osaka City University Hospital, Osaka-Shi, Osaka-Fu, Japan

Hitoshi Goto

Asahikawa Medical College Hospital, Asahikawa-shi, Hokkaido, Japan

Yuichi Makino

NHO Kyushu Medical Center, Fukuoka-Shi, Fukuoka-Ken, Japan

Tomoya Miyamura

St. Luke's International Hospital, Chuo-ku, Tokyo-To, Japan

Masato Okada

Keio University Hospital, Shinjuku-Ku, Tokyo-To, Japan

Noriyuki Seta

Katsuya Suzuki

Okayama University Hospital, Okayama-Shi, Okayama-Ken, Japan

Hiroshi Wakabayashi

Kenei Sada

CLIDITER SA de CV, Mexico, Distrito Federal, Mexico

Ruben Burgos Vargas

Hospital y Clinica OCA SA de CV, Monterrey, Nuevo León, Mexico

Edmundo De la Garza Ramos

Hospital Clinica Angeles Chapalita, Guadalajara, Jalisco, Mexico

Federico Galvan Villegas

**Centro de Alta Especialidad en Reumatología e Investigación del Potosí, S.C, San Luis Potosí,
San Luis Potosí, Mexico**

Juan Rizo Rodriguez

Hospital CIMA Chihuahua, Chihuahua, Chihuahua, Mexico

Natalia Santana Portillo

Antonius Ziekenhuis, Sneek, Netherlands

Ed Griep

**ClinicMed Badurski I wspólnicy Spółka Jawna” w skrócie: ClinicMed Badurski i wsp. Sp.J.,
Bialystok, Poland**

Stefan Daniluk

Wojewodzki Szpital Specjalistyczny we Wroclawiu, Wroclaw, Poland

Katarzyna Gruszecka

NSZOZ Medicus (Niepubliczny Specjalistyczny Zaklad Opieki Zdrowotnej MEDICUS), Sroda Wielkopolska, Poland

Aleksandra Kolczewska

Malopolskie Centrum Medyczne s.c., Krakow, Poland

Mariusz Korkosz

Reumed Spolka z o.o., Lublin, Poland

Marcin Mazurek

Grażyna Pulka Specjalistyczny Ośrodek ALL-MED, Krakow, Poland

Grazyna Pulka

Rheuma Medicus Zaklad Opieki Zdrowotnej, Warszawa, Poland

Maria Rell-Bakalarska

Solumed S.C., Poznan, Poland

Anna Rychlewska-Hanczewska

Krakowskie Centrum Medyczne Sp. z o.o., Krakow, Poland

Dorota Wielowieyska-Szybinska

Medica Pro Familia Sp. z o.o. Spolka Komandytowo-Akcyjna, Oddzial Warszawa, Warszawa, Poland

Agnieszka Zielinska

Regional Budgetary SHI "Territorial Clinical Hospital", Barnaul, Russia

Andrey Dorokhov

SHI Sverdlovsk Regional Clinical Hospital #1, Ekaterinburg, Russia

Lyudmila Evstigneeva

Republican Hospital n.a. V.A. Baranov, Petrozavodsk, Russia

Irina Marusenko

Scientific Research Medical Complex "Your Health", Kazan, Russia

Leysan Myasoutova

SIH Kemerovo Regional Clinical Hospital, Kemerovo, Russia

Svetlana Smakotina

Hospital Universitario Marques de Valdecilla, Santander, Cantabria, Spain

Ricardo Blanco Alonso

Hospital Universitario Reina Sofia, Córdoba, Córdoba, Spain

Maria Dolores Lopez Montilla

Hospital General Carlos Haya, Málaga, Málaga, Spain

Antonio Fernandez Nebro

Clinica CIMA, Barcelona, Barcelona, Spain

Ferran Garcia-Fructuoso

Corporacio Sanitaria Parc Tauli, Sabadell, Barcelona, Spain

Jordi Gratacos Masmitja

Hospital Universitario Nuestra Señora de Valme, Sevilla, Sevilla, Spain

Jose Luis Marenco de la Fuente

Hospital Universitario Puerta de Hierro Majadahonda, Majadahonda, Madrid, Spain

Juan Mulero Mendoza

Hospital Universitario Virgen Macarena, Sevilla, Sevilla, Spain

Federico Navarro Sarabia

Hospital de Basurto, Bilbao, Vizcaya, Spain

Eduardo Ucar Angulo

SI NSC M.D. Strazhesko Institute of Cardiology of NAMSU, Kyiv, Ukraine

Olena Garmish

MCIC Health Clinic BO LTD TPC Slaomed, Vinnytsia, Ukraine

Oleksandr Golovchenko

**SRI of Invalid Rehabilitation (educational-scientific-medical complex) of Vinnytsia M.I.Pyrogov
NMU, Vinnytsia, Ukraine**

Sergii Shevchuk

Vinnytsia M.I. Pyrogov Regional Clinical Hospital, Vinnytsia, Ukraine

Mykola Stanislavchuk

**CI of Healthcare Kharkiv CCH #8 Kharkiv MA of PGE of MOHU Ch of Cardiology and Funct
Diagnostics, Kharkiv, Ukraine**

Vira Tseluyko

**State Institute V.K.Gusak Emergency and Reconstructive Surgery Institute of NAMS of Ukraine,
Donetsk, Ukraine**

Mykola Vatutin

New Cross Hospital, Wolverhampton, West Midlands, United Kingdom

Nichol Barkham

University Hospital Aintree, Liverpool, Merseyside, United Kingdom

Nicola Goodson

St Luke's Hospital, Bradford, West Yorkshire, United Kingdom

Philip Helliwell

Chapel Allerton Hospital, Leeds, West Yorkshire, United Kingdom

Helena Marzo-Ortega

Addenbrooke's Hospital, Cambridge, Cambridgeshire, United Kingdom

Andrew Ostor

King George Hospital, Goodmayes, Essex, United Kingdom

Euthalia Roussou

Whipps Cross University Hospital, London, Greater London, United Kingdom

Hasan Tahir

Marietta Rheumatology Associates, PC, Marietta, Georgia, USA

Mohammed Abubaker

West Tennessee Research Institute, Jackson, Tennessee, USA

Jacob Aelion

Medication Management, LLC, Greensboro, North Carolina, USA

Anthony Anderson

Box Arthritis & Rheumatology of the Carolinas, PLLC, Charlotte, North Carolina, USA

Emily Jane Box

Physicians Clinic of Iowa, PC, Cedar Rapids, Iowa, USA

Michael Brooks

Burnette & Silverfield, MDs, PLC, Tampa, Florida, USA

Michael Burnette

Pioneer Research Solutions, Inc., Cypress, Texas, USA

Asif Cochinwala

Columbia Arthritis Center, P.A., Columbia, South Carolina, USA

Ronald Collins

Kathleen Flint

Atlantic Coast Research, Toms River, New Jersey, USA

Rajat Dhar

ACME Research, LLC., Orangeburg, South Carolina, USA

Mitchell Feinman

Metroplex Clinical Research Center, LLC, Dallas, Texas, USA

Roy Fleischmann

RASF - Clinical Research Center, Boca Raton, Florida, USA

Joseph Forstot

New England Research Associates LLC, Trumbull, Connecticut, USA

Geoffrey Gladstein

Arthritis and Osteoporosis Medical Associates, PLLC, Brooklyn, New York, USA

David Goddard

Robert A. Harrell, III, MD, Durham, North Carolina, USA

Robert Harrell

Inland Rheumatology Clinical Trials, Inc., Upland, California, USA

Antony Hou

Klein and Associates, M.D., P.A., Hagerstown, Maryland, USA

Mary Howell

Arthritis Consultants, Inc., St. Louis, Missouri, USA

Akgun Ince

Clinical and Translational Research Center of Alabama, PC, Tuscaloosa, Alabama, USA

Richard Jones

Mountain State Clinical Research, Clarksburg, West Virginia, USA

Shelly Kafka

Altoona Center for Clinical Research, P.C., Duncansville, Pennsylvania, USA

Alan Kivitz

Klein and Associates, M.D., P.A., Cumberland, Maryland, USA

Steven Klein

Little Rock Diagnostic Clinic, Little Rock, Arkansas, USA

Cummins Lue

Seattle Rheumatology Associates, Seattle, Washington, USA

Philip Mease

Arthritis Northwest, PLLC, Spokane, Washington, USA

Eric Mueller

Joint and Muscle Research Institute, Charlotte, North Carolina, USA

Alireza Nami

Arthritis & Osteoporosis Treatment Center, P.A., Orange Park, Florida, USA

Meera Oza

Apex Clinical Research, Kennewick, Washington, USA

Derek Peacock

University of Rochester, Rochester, New York, USA

Christopher Ritchlin

Heartland Research Associates, LLC, Wichita, Kansas, USA

Shadi Shahouri

Florida Medical Clinic, P.A., Zephyrhills, Florida, USA

David Sikes

**Arthritis, Rheumatic & Back Disease Associates, P.A./Rohrer Center for Health Fitness,
Voorhees, New Jersey, USA**

Sheldon Solomon

Diagnostic Rheumatology and Research, Indianapolis, Indiana, USA

Michael Stack

Rheumatology Associates, Birmingham, Alabama, USA

Anthony Turkiewicz

STAT Research, Inc., Dayton, Ohio, USA

Sanford Wolfe

Study Design and Patient Population

The SPIRIT-P1 study is a 3-year, phase 3, randomized, double-blind, placebo- and active-controlled clinical trial comparing two regimens of ixekizumab and an active adalimumab reference arm to treatment with placebo. The multicenter study was conducted by 114 investigators, all rheumatologists or dermatologists, at 114 study sites in 15 countries (Belgium, Bulgaria, Canada, Czech Republic, Estonia, France, Japan, Mexico, Netherlands, Poland, Russia, Spain, Ukraine, United Kingdom, and United States of America). Enrollment began in January 2013, and the last patient completed the 24-week double-blind treatment period in December 2014. Recruitment was limited to patients not previously treated with biologic agents for plaque psoriasis or psoriatic arthritis (PsA). The study was designed by rheumatology experts in collaboration with representatives of the sponsor (Eli Lilly and Company). Responsibilities for Quintiles Inc., a contract research organization, included the collection and validation of study data. Writing and editorial assistance were provided by medical writers contracted with ClinGenuity LLC, Cincinnati, OH. All authors made revisions to the first and subsequent drafts of the manuscript and vouch for the accuracy and completeness of data reported. The study was conducted in accordance with Good Clinical Practice, with consensus ethics guidelines derived from international guidelines such as the Declaration of Helsinki, and local laws and regulations. At each study center, institutional review boards or independent ethics committees approved the study protocol and informed consent forms. All patients gave written informed consent.

Study eligibility requirements were patients ≥ 18 years of age with a diagnosis of PsA for ≥ 6 months and who fulfilled the Classification Criteria for Psoriatic Arthritis (CASPAR).[1] Additional disease state eligibility requirements were as follows: ≥ 3 of 68 tender joint count and ≥ 3 of 66 swollen joint count; either ≥ 1 PsA-related hand or foot joint erosion or C-reactive protein > 6 mg/L; and evidence of psoriasis (current or personal history). Principal exclusion criteria were history of malignant disease (other than non-melanoma skin cancer or in situ cervical carcinoma, successfully treated and with no recurrences within the past 5 years); recent infection requiring hospitalization or antibiotic treatment; positive testing for hepatitis B, hepatitis C, or human immunodeficiency virus; liver function or hematology test results outside of predefined limits; or any history of biologic treatment for plaque psoriasis or PsA.

Treatment and Randomization

Patients were randomized at a 1:1:1:1 ratio to 1 of 4 treatment groups: ixekizumab 80 mg every 2 weeks (IXEQ2W), ixekizumab 80 mg every 4 weeks (IXEQ4W), adalimumab 40 mg Q2W, or placebo, all administered via subcutaneous injection (see online supplementary figure S1). Patients randomized to IXEQ4W or IXEQ2W were administered a starting dose of 160 mg given as two injections at week 0.

Patients who were identified as Inadequate Responders at week 16 received rescue medication (addition or modification to concomitant medications, described below) and either remained on their originally assigned dose of ixekizumab or, if receiving adalimumab or placebo, were re-randomized to IXEQ2W or IXEQ4W in a 1:1 ratio. Inadequate Responders from the adalimumab treatment group received 8 weeks of placebo as a washout therapy prior to initiating ixekizumab treatment at week 24. Additionally, Inadequate Responders from the adalimumab or placebo treatment groups were administered a starting dose of 160 mg given as two injections at week 24 and week 16, respectively.

Because the different randomized treatments used distinct schedules, distinguishable prefilled syringes, and differing times for IXE starting doses, a double-dummy design with Q2W dosing was employed to conceal treatment allocation. Overall, the double-dummy design was devised so that all patients received 3 injections at weeks 0, 16, and 24, and 2 injections at weeks 2, 4, 6, 8, 10, 12, 14, 18, 20, and 22 (online supplementary figure S2).

Concomitant Therapy and Rescue Medication

Treatment with concomitant therapies was allowed during the double-blind period of the study. Patients taking permitted medications were required to be on a chronic, stable dose at baseline (week 0) through week 24 (inclusive), unless a change was required for safety reasons or for rescue medication for Inadequate Responders at week 16.

The following concomitant therapies were permitted:

- NSAIDs (including COX-2 inhibitors) and Analgesics
 - Up to the maximum recommended doses for pain
- cDMARDs
 - MTX: Up to 25 mg/week
 - Hydroxychloroquine: Up to 400 mg/day
 - Leflunomide: Up to 20 mg/day
 - Sulfasalazine: Up to 3 g/day
- Topical Steroids
 - Class 6 (mild)
 - Class 7 (least potent)
- Oral Corticosteroids
 - Up to 10 mg/day of prednisone (or its equivalent)
- Inhaled Steroids for asthma
- Other Concomitant Therapies for Ps
 - Shampoos, not containing >3% salicylic acid, corticosteroids, coal tar, or vitamin D3 analogues
 - Topical Products, not containing urea, >3% salicylic acid, alpha- or beta-hydroxyl acids, corticosteroids, or vitamin D3 analogues
 - Bath Oils/Oatmeal Bath Preparations
- Other Concomitant Medications for Concomitant Diseases

Rescue Medication (at Week 16): Patients who were identified as Inadequate Responders at week 16 were required to modify their concomitant medication by adjusting the dose of existing medication(s) and/or introduction of new medication(s). Modifications made at week 16 must have remained in place and unchanged throughout the remainder of the double-blind period of the study. The following medications were eligible for modification: NSAIDs and opiate analgesics, cDMARDs, and oral

corticosteroids. Additionally, one intra-articular injection of a corticosteroid was permitted for Inadequate Responders.

American College of Rheumatology (ACR) Response Criteria

An ACR20 response is defined as $\geq 20\%$ improvement from baseline in the number of tender joints (Tender Joint Count [TJC]) and number of swollen joints (Swollen Joint Count [SJC]), as well as $\geq 20\%$ improvement in 3 of the 5 following domains: Patient's Assessment of Pain Visual Analog Scale (Pain VAS), Patient's Global Assessment of Disease Activity (PatGA) VAS, and Physician's Global Assessment of Disease Activity (PGA) VAS (on scales of 0-100), patient's assessment of disability (Health Assessment Questionnaire-Disability Index on a scale ranging from 0 to 3), [2, 3] and an acute-phase reactant as measured by high-sensitive (assay) C-reactive protein (CRP) in mg/L. An ACR50 response is defined as $\geq 50\%$ improvement, and an ACR70 response is defined as $\geq 70\%$ improvement in the above criteria.

Leeds Dactylitis Index-Basic (LDI-B)

If the patient had dactylitis (qualitatively assessed by the investigator), the LDI-B was administered by site personnel. The LDI-B was developed to measure the severity of dactylitis. [4, 5] The LDI-B total score is based on the presence of dactylitis in a digit(s). For each digit that is dactylitic, as defined by a minimum increase of 10% in circumference of the dactylitic digit (A) over the contra-lateral digit (B), the ratio (A/B) of the circumference of the affected digit to the circumference of the digit on the opposite hand or foot is measured. If the same digits on each hand or foot are thought to be involved, the clinician refers to a table of normative values for a value which will be used to provide the comparison; this concept is also applied if there is a contralateral missing finger or toe.

The calculated ratio (A/B) is then subtracted by 1, multiplied by 100 and then multiplied by a tenderness score (C) of 0 (not tender) or 1 (tender). The results of each digit are then added to produce the LDI-B total score. Originally, the tenderness score was based upon the Ritchie index (graded 0 to 3), rather than a binary score of 0 or 1. The original method is referred to as the LDI, and the method based upon the binary tenderness score is referred to as the LDI-B. [4, 5]

Study Power

Randomization of 412 patients (103 per treatment arm) was expected to provide $\geq 99\%$ power to test the superiority of each of the ixekizumab regimens versus placebo for ACR20 at week 24, assuming a response rate of 48% for each ixekizumab regimen versus 15% for placebo using a 2-sided Fisher's exact test at an alpha level of 0.025. This was also expected to have approximately 90% power to test the superiority of each ixekizumab dose regimen versus placebo for change from baseline in van der Heijde modified Total Sharp Score (mTSS) at week 24 using a 2-sided t-test at an alpha level of 0.025, assuming a difference of 0.59 between placebo and ixekizumab and a standard deviation of 1.19. The adalimumab 40 mg Q2W treatment arm served as an active reference arm for comparison with placebo. The study was not powered to test equivalence or non-inferiority of ixekizumab versus adalimumab.

Additional Statistical Methods

The following additional analyses were performed on the mTSS assessments: the percentage of patients with no change in mTSS from baseline (≤ 0.0), the percentage with mTSS change ≤ 0.5 (a threshold based on studies in the literature), [6, 7] and the percentage with mTSS change ≤ 0.95 (based on the smallest detectable change as calculated from the variability in scores assigned by the imaging readers using the method of Bruynesteyn et al). [8] A linear extrapolation method was used to impute missing data. [9]

Efficacy Data: ACR Core Set

The mean change from baseline for each individual component of the ACR Core Set is presented in Supplementary Table S1 and Supplementary Figure S4. At weeks 12 and 24, significantly greater improvements from baseline in TJC, SJC, Pain VAS, PatGA VAS, PGA VAS, HAQ-DI, and hs-CRP were observed for IXEQ4W and IXEQ2W versus placebo ($p \leq 0.01$). At weeks 12 and 24, mean reductions in TJC, SJC, Pain VAS, PatGA VAS, PGA VAS, and HAQ-DI were significantly greater in patients receiving adalimumab than in those receiving placebo ($p \leq 0.025$); the mean change from baseline in hs-CRP was significantly different between adalimumab and placebo at week 12.

Efficacy Data: LDI-B

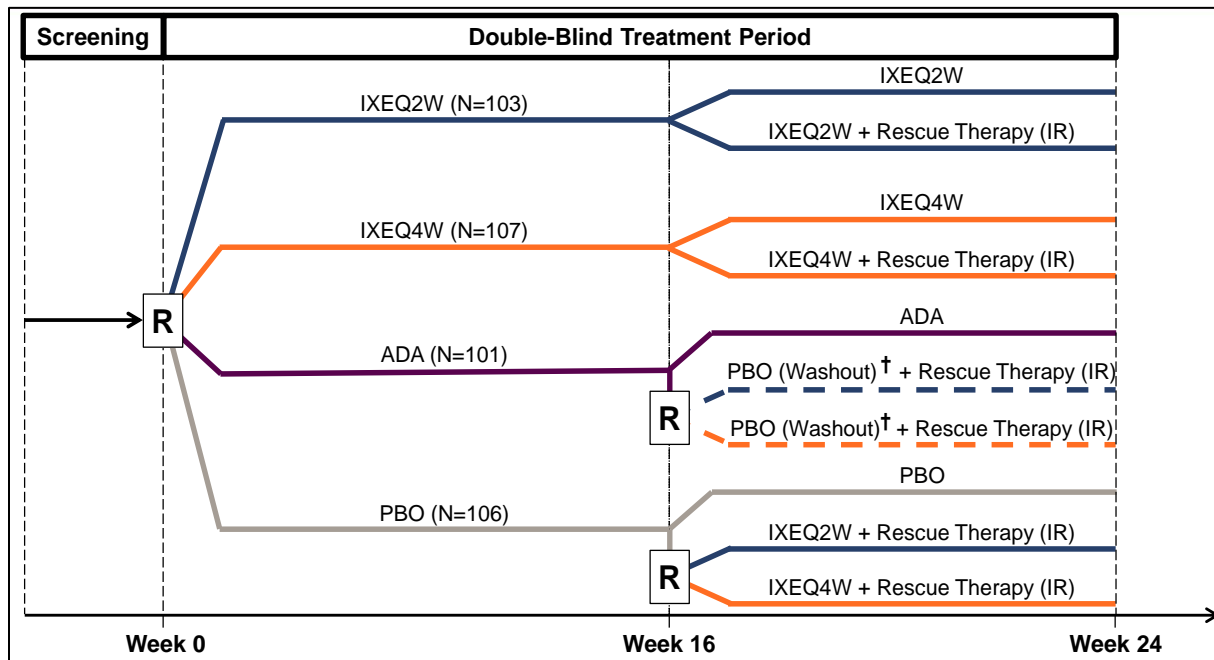
The pre-specified analyses for baseline LDI-B score and change from baseline in LDI-B score are presented in Supplementary Table S4. These analyses assessed patients who were qualitatively assessed by the investigator to have dactylitis at baseline. At baseline, the LDI-B score for the adalimumab group (93.9) was significantly elevated in comparison to the score for the placebo group (46.2) ($p < 0.05$). No statistical difference was noted in baseline LDI-B score in either ixekizumab group compared to the placebo group. Mean reductions in LDI-B score at week 24 were significantly greater in patients receiving IXEQ4W (-57.1), IXEQ2W (-48.3), and adalimumab (-57.1) than in those receiving placebo (-25.4) ($p \leq 0.01$).

Additionally, in patients with dactylitis and a baseline LDI-B score > 0 , baseline LDI-B score and change from baseline in LDI-B score were assessed post-hoc. Comparable to the aforementioned pre-specified analysis, patients with a baseline LDI-B score > 0 in the adalimumab group (119.9) had a greater baseline LDI-B score compared to patients in the placebo group (62.7) ($p < 0.05$). The baseline LDI-B score of either ixekizumab group was not significantly different from the placebo group. At week 24, patients receiving IXEQ4W (-75.4), IXEQ2W (-66.1), and adalimumab (-76.0) had significant improvements from baseline in LDI-B score compared to patients receiving placebo (-33.7) ($p \leq 0.01$).

References

1. Taylor W, Gladman D, Helliwell P, et al. Classification criteria for psoriatic arthritis: development of new criteria from a large international study. *Arthritis Rheum* 2006;54:2665-73.
2. Fries JF, Spitz P, Kraines RG, et al. Measurement of patient outcome in arthritis. *Arthritis Rheum* 1980;23:137-45.
3. Fries JF, Spitz PW, Young DY. The dimensions of health outcomes: the health assessment questionnaire, disability and pain scales. *J Rheumatol* 1982;9:789-93.
4. Helliwell PS, Firth J, Ibrahim GH, et al. Development of an assessment tool for dactylitis in patients with psoriatic arthritis. *J Rheumatol* 2005;32:1745-50.
5. Healy PJ, Helliwell PS. Measuring dactylitis in clinical trials: which is the best instrument to use? *J Rheumatol* 2007;34:1302-6.
6. van der Heijde D, Fleischmann R, Wollenhaupt J, et al. Effect of different imputation approaches on the evaluation of radiographic progression in patients with psoriatic arthritis: results of the RAPID-PsA 24-week phase III double-blind randomised placebo-controlled study of certolizumab pegol. *Ann Rheum Dis* 2014;73:233-7.
7. van der Heijde D LR, Mease PJ, McInnes IB, Conaghan PG, Pricop L, Ligozio G, Richards H, and Mporu S. Secukinumab, a monoclonal antibody to interleukin-17A, provides significant and sustained inhibition of joint structural damage in active psoriatic arthritis regardless of prior TNF inhibitors or concomitant methotrexate: a phase 3 randomized, double-blind, placebo-controlled study [abstract]. *Arthritis & Rheumatology* 2014;66:Suppl S10.
8. Bruynesteyn K, Boers M, Kostense P, et al. Deciding on progression of joint damage in paired films of individual patients: smallest detectable difference or change. *Ann Rheum Dis* 2005;64:179-82.
9. Landewe R, Strand V, van der Heijde D. From inhibition of radiographic progression to maintaining structural integrity: a methodological framework for radiographic progression in rheumatoid arthritis and psoriatic arthritis clinical trials. *Ann Rheum Dis* 2013;72:1113-7.

Supplementary Figure S1. Study Design.



Abbreviations: ADA=40 mg adalimumab every 2 weeks (active reference arm); IR=Inadequate Responder; IXEQ2W=80 mg ixekizumab every 2 weeks; IXEQ4W=80 mg ixekizumab every 4 weeks; PBO=placebo every 2 weeks; R=randomization.

All patients administered ixekizumab received a 160-mg starting dose (as 2 injections) followed by 80 mg every 2 or every 4 weeks. Patients were designated at week 16 as Inadequate Responders if they did not meet pre-defined criteria for changes in both tender joint count and swollen joint count from baseline. The investigators, study personnel, and patients were blinded to the predefined rescue criteria. Inadequate Responders were required to add or modify concomitant medications.

Inadequate Responders at Week 16:

IXEQ2W: Received rescue therapy. Continued to receive 80 mg ixekizumab every 2 weeks.

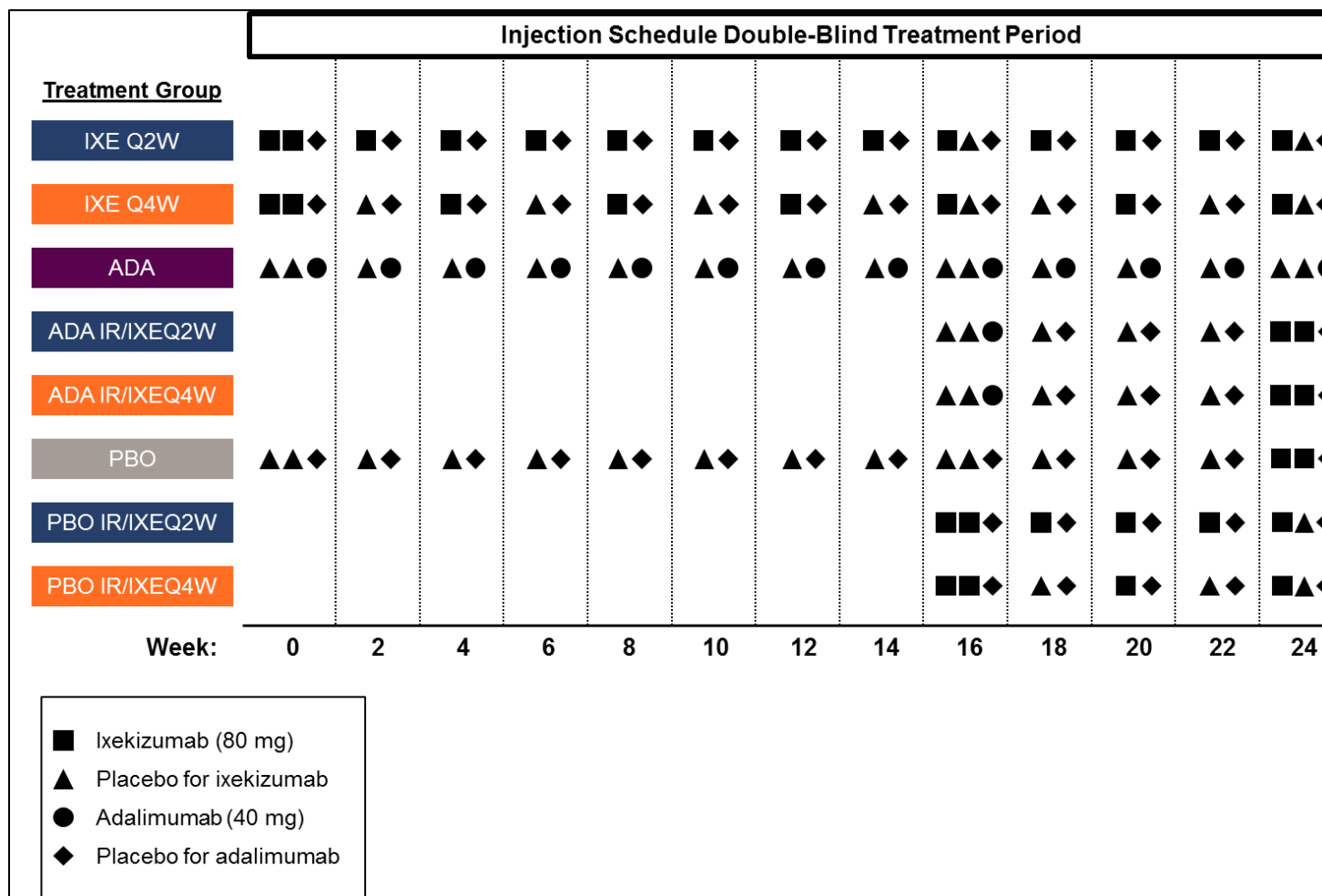
IXEQ4W: Received rescue therapy. Continued to receive 80 mg ixekizumab every 4 weeks.

ADA: Received rescue therapy. Re-randomized (1:1) to either IXEQ2W or IXEQ4W, but first went through a blinded PBO washout for 8 weeks.

PBO: Received rescue therapy. Re-randomized (1:1) to either IXEQ2W or IXEQ4W.

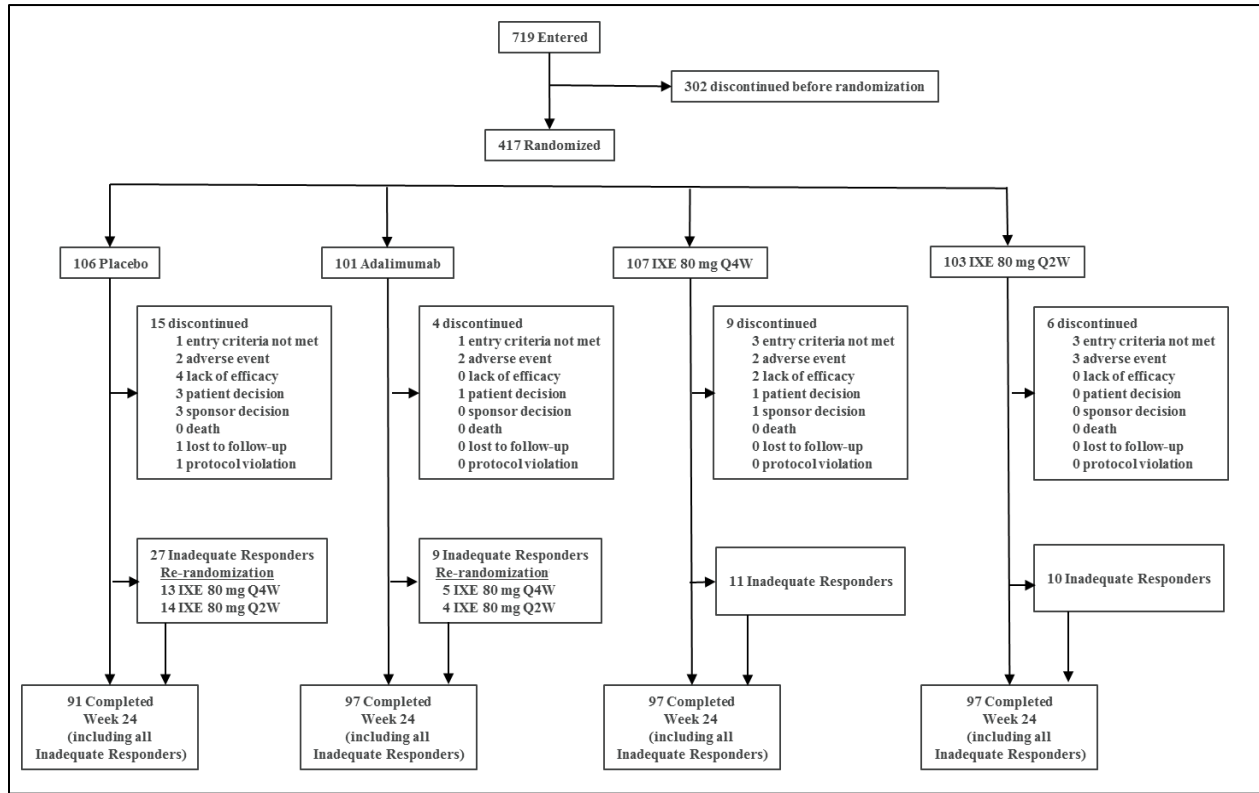
†IRs at Week 16, who were initially randomized to ADA, underwent an 8-week PBO washout before starting IXEQ2W or IXEQ4W at Week 24.

Supplementary Figure S2 Injection Schedule.



Abbreviations: ADA=40 mg adalimumab every 2 weeks (active reference arm); IR=inadequate responder; IXEQ2W=80 mg ixekizumab every 2 weeks; IXEQ4W=80 mg ixekizumab every 4 weeks; PBO=placebo every 2 weeks.

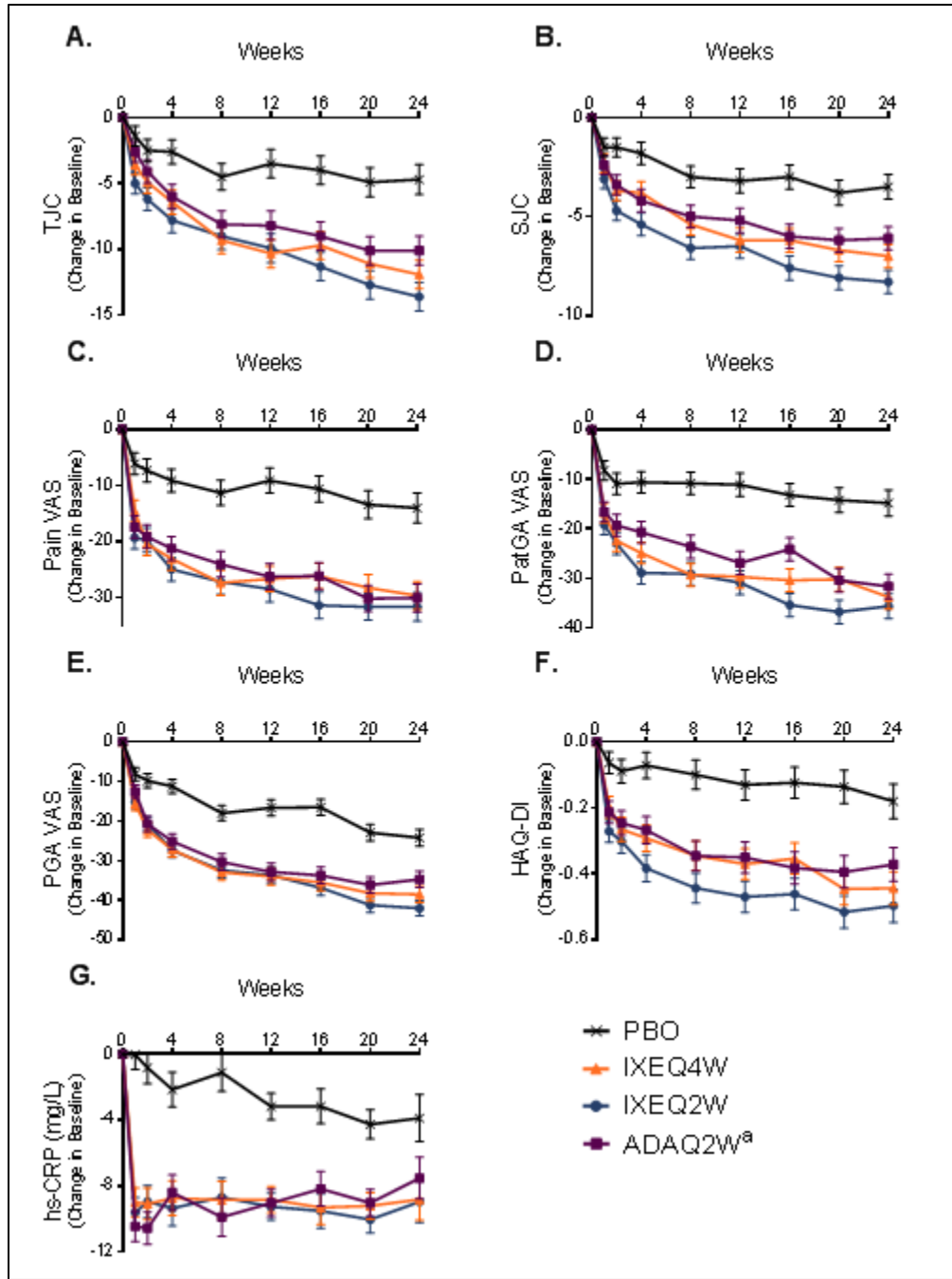
Supplementary Figure S3. Patient Disposition From Study Treatment During the Double-Blind Treatment Period for the Intent-to-Treat Population.



Abbreviations: IXE 80 mg Q2W=80 mg ixekizumab every 2 weeks; IXE 80 mg Q4W=80 mg ixekizumab every 4 weeks.

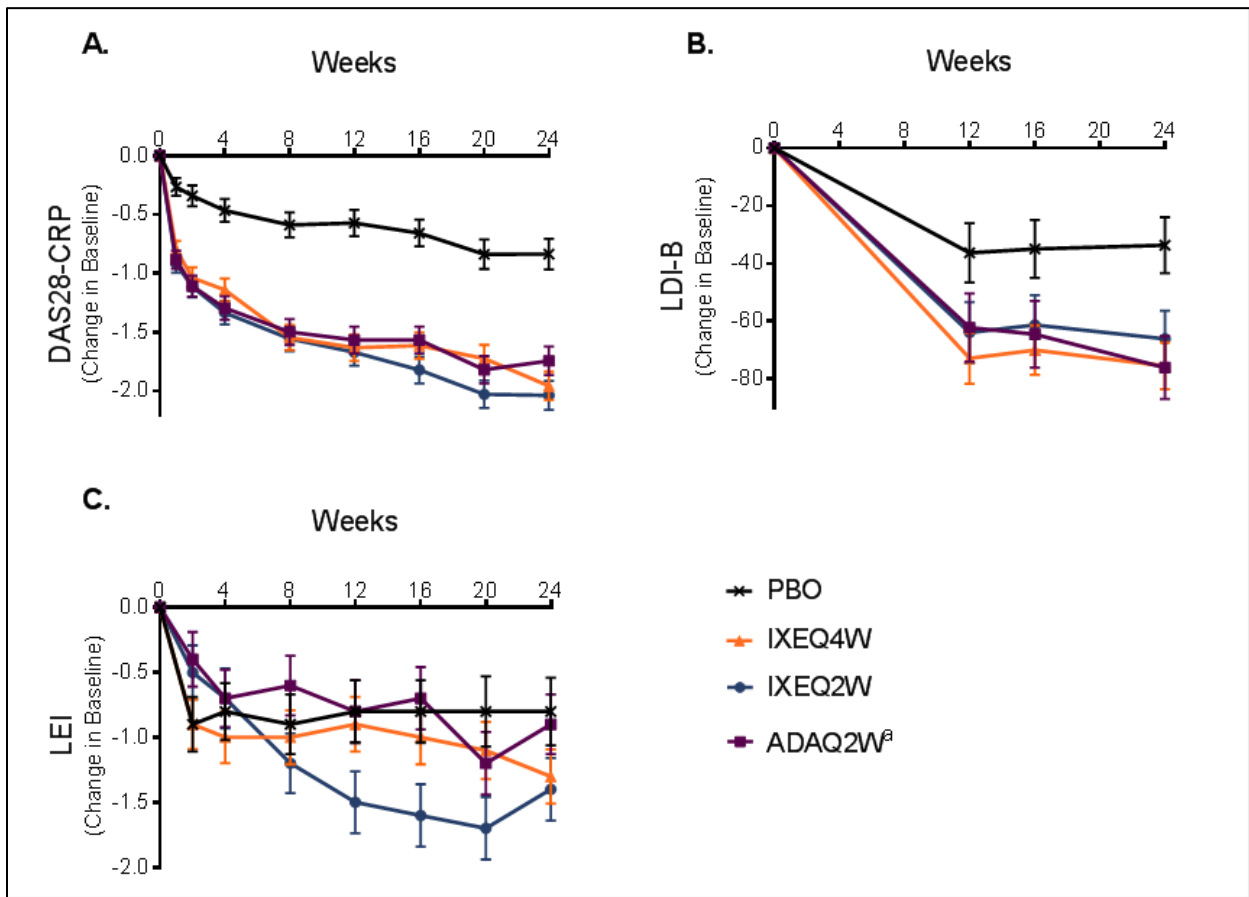
Supplementary Figure S4. Time Course of Individual Components of ACR Core Set

The least-square mean changes in TJC (A), SJC (B), Pain VAS (C), PatGA VAS (D), PGA VAS (E), HAQ-DI (F), and hsCRP (G) scores are shown. Error bars represent standard error calculations. ^aActive reference arm for comparison with placebo. The study was not powered to test equivalence or non-inferiority of ixekizumab versus adalimumab.



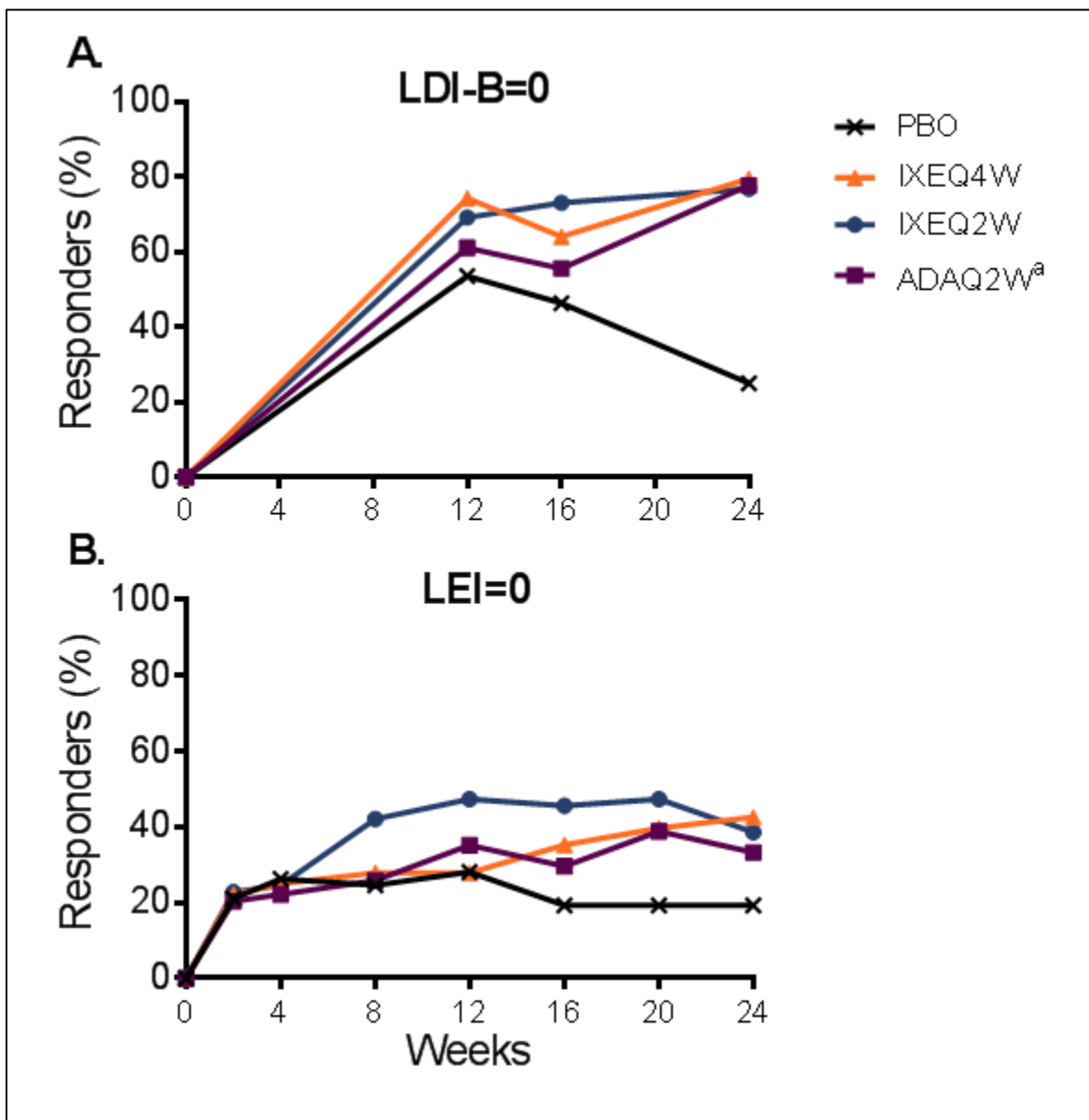
Supplementary Figure S5. Time Course of Disease Assessment

The least-square mean changes in DAS28-CRP (A), LDI-B scores (B), and LEI scores (C) are shown. LDI-B was measured in patients with the presence of dactylitis at baseline and baseline LDI-B>0. LEI was measured in patients with the presence of enthesitis at baseline. Error bars represent standard error calculations. ^aActive reference arm for comparison with placebo. The study was not powered to test equivalence or non-inferiority of ixekizumab versus adalimumab.



Supplementary Figure S6. Time Course of Dactylitis or Enthesitis Resolution.

The percentages of patients achieving complete resolution of dactylitis (LDI-B=0) (A) and enthesitis (LEI=0) (B). LDI-B=0 was measured in patients with the presence of dactylitis at baseline and baseline LDI-B>0. LEI=0 was measured in patients with the presence of enthesitis at baseline and baseline LEI>0. Patients with inadequate responses to treatment at week 16 or missing data were analyzed as non-response up to week 24. ^aActive reference arm for comparison with placebo. The study was not powered to test equivalence or non-inferiority of ixekizumab versus adalimumab.



Supplementary Table S1. Mean change from baseline in the individual components of the ACR Core Set

	Placebo N=106		IXEQ4W N=107		IXEQ2W N=103		Adalimumab 40 mg Q2W ^a N=101	
	12 weeks	24 weeks	12 weeks	24 weeks	12 weeks	24 weeks	12 weeks	24 weeks
LS Mean Change from Baseline (SE):								
TJC	-3.5 (1.1)	-4.7 (1.1)	-10.3 (1.1) *	-11.9 (1.1) *	-9.9 (1.1) *	-13.6 (1.1) *	-8.2 (1.1) †	-10.1 (1.1) *
SJC	-3.2 (0.6)	-3.5 (0.6)	-6.2 (0.6) *	-7.0 (0.6) *	-6.5 (0.6) *	-8.3 (0.6) *	-5.2 (0.6) ‡	-6.1 (0.6) †
Pain VAS	-9.1 (2.3)	-14.0 (2.7)	-26.6 (2.3) *	-29.6 (2.5) *	-28.4 (2.3) *	-31.6 (2.5) *	-26.2 (2.3) *	-30.0 (2.5) *
PatGA VAS	-11.1 (2.3)	-14.8 (2.7)	-29.7 (2.4) *	-33.8 (2.5) *	-30.9 (2.4) *	-35.6 (2.5) *	-26.9 (2.4) *	-31.6 (2.5) *
PGA VAS	-16.6 (2.1)	-24.2 (2.1)	-34.0 (2.1) *	-38.5 (2.1) *	-33.6 (2.1) *	-42.0 (2.0) *	-32.8 (2.2) *	-34.7 (2.1) *
HAQ-DI ^b	-0.13 (0.05)	-0.18 (0.05)	-0.37 (0.05) *	-0.44 (0.05) *	-0.47 (0.05) *	-0.50 (0.05) *	-0.35 (0.05) *	-0.37 (0.05) †
hs-CRP (mg/L)	-3.2 (0.8)	-3.9 (1.4)	-8.8 (0.8) *	-8.8 (1.3) †	-9.2 (0.8) *	-8.9 (1.3) †	-9.0 (0.8) *	-7.5 (1.3)

Abbreviations: HAQ-DI=Health Assessment Questionnaire-Disability Index; hs-CRP=high-sensitivity (assay) C-reactive protein; IXEQ2W=80 mg ixekizumab once every 2 weeks; IXEQ4W=80 mg ixekizumab once every 4 weeks; LS=least squares; Pain =Patient Assessment of Pain; PatGA=Patient Global Assessment of Disease Activity; PGA=Physician Global Assessment of Disease Activity; Q2W=every 2 weeks; SE=standard error; SJC=Swollen Joint Count; TJC=Tender Joint Count; VAS=Visual Analog Scale.

^aThe adalimumab 40 mg Q2W treatment arm served as active reference for comparison with placebo. The study was not powered to test equivalence or non-inferiority of ixekizumab versus adalimumab.

^bAdditionally presented in Table 2.

*p≤0.001 versus placebo.

†p≤0.01 versus placebo.

‡p≤0.025 versus placebo.

Supplemental Table S2. Adverse Events of Injection Site Reactions During the 24-Week Double-Blind Period of the SPIRIT-P1 Study

	Placebo (N=106)	IXEQ4W (N=107)	IXEQ2W (N=102)	Adalimumab 40 mg Q2W ^a (N=101)
Injection Site Reactions ^b , n (%)	5 (4.7)	26 (24.3) *	27 (26.5) *	6 (5.9)
Mild	2 (1.9)	22 (20.6)	22 (21.6)	5 (5.0)
Moderate	2 (1.9)	3 (2.8)	4 (3.9)	1 (1.0)
Severe	1 (0.9)	1 (0.9)	1 (1.0)	0
Reaction ^c , n (%)	0	13 (12.1) *	16 (15.7) *	2 (2.0)
Erythema ^c , n (%)	0	7 (6.5) ‡	13 (12.7) *	2 (2.0)
Haematoma ^c , n (%)	0	1 (0.9)	2 (2.0)	0
Pruritus ^c , n (%)	0	1 (0.9)	2 (2.0)	0
Bruising ^c , n (%)	1 (0.9)	2 (1.9)	0	2 (2.0)
Pain ^c , n (%)	3 (2.8)	2 (1.9)	0	1 (1.0)
Swelling ^c , n (%)	0	0	2 (2.0)	0
Discolouration ^c , n (%)	0	0	1 (1.0)	0
Hypersensitivity ^c , n (%)	0	0	1 (1.0)	0
Papule ^c , n(%)	0	0	1 (1.0)	0
Rash ^c , n (%)	1 (0.9)	1 (0.9)	0	0

Abbreviations: IXEQ4W=80 mg ixekizumab every 4 weeks; IXEQ2W=80 mg ixekizumab every 2 weeks;

MedDRA=Medical Dictionary for Regulatory Activities; Q2W=every 2 weeks.

^aThe adalimumab 40 mg Q2W treatment arm served as active reference for comparison with placebo. The study was not powered to test equivalence or non-inferiority of ixekizumab versus adalimumab.

^bMedDRA, version 17.1, High Level Term.

^cMedDRA, version 17.1, Preferred Term. The preceding 'Injection site' for each Preferred Term, was removed for reader ease; for example, the full Preferred Term for 'Erythema' is 'Injection site erythema'.

*p≤0.001 versus placebo.

‡p≤0.025 versus placebo.

Supplemental Table S3. Adverse Events of Infection (Special Safety Topic) During the 24-Week Double-Blind Period of the SPIRIT-P1 Study

	Placebo (N=106)	IXEQ4W (N=107)	IXEQ2W (N=102)	Adalimumab 40 mg Q2W ^a (N=101)
Nasopharyngitis, n (%)	5 (4.7)	7 (6.5)	3 (2.9)	7 (6.9)
Upper respiratory tract infection, n (%)	7 (6.6)	5 (4.7)	3 (2.9)	5 (5.0)
Bronchitis, n (%)	3 (2.8)	3 (2.8)	3 (2.9)	4 (4.0)
Conjunctivitis, n (%)	0	2 (1.9)	1 (1.0)	0
Oral herpes, n (%)	1 (0.9)	2 (1.9)	1 (1.0)	1 (1.0)
Pharyngitis, n (%)	1 (0.9)	1 (0.9)	2 (2.0)	0
Folliculitis, n (%)	0	1 (0.9)	1 (1.0)	0
Gastroenteritis viral, n (%)	0	1 (0.9)	1 (1.0)	0
Rhinitis, n (%)	0	0	2 (2.0)	1 (1.0)
Sinusitis, n (%)	3 (2.8)	1 (0.9)	1 (1.0)	2 (2.0)
Urinary tract infection, n (%)	2 (1.9)	2 (1.9)	0	4 (4.0)
Acute tonsillitis, n (%)	0	1 (0.9)	0	0
Body tinea, n (%)	0	0	1 (1.0)	0
Cystitis, n (%)	1 (0.9)	1 (0.9)	0	1 (1.0)
Gastroenteritis, n (%)	0	1 (0.9)	0	0
Herpes zoster, n (%)	0	0	1 (1.0)	0
Influenza, n (%)	0	1 (0.9)	0	2 (2.0)
Injection site cellulitis, n (%)	0	1 (0.9)	0	0
Laryngitis, n (%)	1 (0.9)	0	1 (1.0)	0
Localized infection, n (%)	0	1 (0.9)	0	0
Lyme disease, n (%)	0	0	1 (1.0)	0
Oesophageal candidiasis, n (%)	0	0	1 (1.0)	0
Onychomycosis, n (%)	0	1 (0.9)	0	0
Oral candidiasis, n (%)	0	1 (0.9)	0	0
Otitis media, n (%)	3 (2.8)	0	1 (1.0)	0

	Placebo (N=106)	IXEQ4W (N=107)	IXEQ2W (N=102)	Adalimumab 40 mg Q2W ^a (N=101)
Periodontitis, n (%)	0	0	1 (1.0)	0
Pharyngitis streptococcal, n (%)	0	0	1 (1.0)	1 (1.0)
Pseudomembranous colitis, n (%)	0	0	1 (1.0)	0
Respiratory tract infection viral, n (%)	0	0	1 (1.0)	0
Skin infection, n (%)	0	0	1 (1.0)	0
Tooth abscess, n (%)	1 (0.9)	0	1 (1.0)	0
Viral pharyngitis, n (%)	1 (0.9)	1 (0.9)	0	0
Viral rash, n (%)	0	1 (0.9)	0	0
Acute sinusitis, n (%)	1 (0.9)	0	0	0
Adenoviral conjunctivitis, n (%)	0	0	0	1 (1.0)
Cellulitis, n (%)	0	0	0	1 (1.0)
Ear infection, n (%)	1 (0.9)	0	0	0
Gingivitis, n (%)	1 (0.9)	0	0	0
Lower respiratory tract infection, n (%)	0	0	0	1 (1.0)
Pneumonia mycoplasmal, n (%)	0	0	0	1 (1.0)
Rash pustular, n (%)	0	0	0	1 (1.0)
Staphylococcal skin infection, n (%)	1 (0.9)	0	0	0
Tracheitis, n (%)	0	0	0	1 (1.0)
Viral infection, n (%)	0	0	0	1 (1.0)

Abbreviations: IXEQ4W=80 mg ixekizumab every 4 weeks; IXEQ2W=80 mg ixekizumab every 2 weeks; Q2W=every 2 weeks.

^aThe adalimumab 40 mg Q2W treatment arm served as active reference for comparison with placebo. The study was not powered to test equivalence or non-inferiority of ixekizumab versus adalimumab.

Supplementary Table S4. Effect on dactylitis symptoms as measured by mean change from baseline in LDI-B score

	Placebo		IXEQ4W		IXEQ2W		Adalimumab 40 mg Q2W ^a	
Patients with presence of dactylitis^b at baseline (pre-specified analysis)								
	N=39		N=54		N=41		N=23	
LDI-B <i>Baseline (SD)^c</i>	46.2 (65.5)		58.1 (96.7)		40.6 (54.6)		93.9 (111.9) †	
	12 weeks	24 weeks	12 weeks	24 weeks	12 weeks	24 weeks	12 weeks	24 weeks
LDI-B <i>mean change from baseline (SE)</i>	-26.8 (7.1)	-25.4 (6.5)	-54.7 (6.3) †	-57.1 (5.7) *	-47.5 (7.0) ‡	-48.3 (6.3) †	-46.0 (8.8)	-57.1 (7.8) *
Patients with presence of dactylitis at baseline^b and baseline LDI-B score >0 (post-hoc analysis)								
	N=28		N=39		N=26		N=18	
LDI-B <i>Baseline (SD)^c</i>	62.7 (69.3)		73.0 (103.4)		64.0 (56.6)		119.9 (113.5) †	
	12 weeks	24 weeks	12 weeks	24 weeks	12 weeks	24 weeks	12 weeks	24 weeks
LDI-B <i>mean change from baseline (SE)^d</i>	-36.3 (10.3)	-33.7 (9.7)	-72.8 (8.8) †	-75.4 (8.1) *	-63.9 (10.6) †	-66.1 (9.8) †	-62.1 (11.9)	-76.0 (10.9) *

Abbreviations: IXEQ2W=80 mg ixekizumab once every 2 weeks; IXEQ4W=80 mg ixekizumab once every 4 weeks; LDI-B=Leeds Dactylitis Index-Basic; Q2W=every 2 weeks; SD=standard deviation; SE=standard error.

^aThe adalimumab 40 mg Q2W treatment arm served as active reference for comparison with placebo. The study was not powered to test equivalence or non-inferiority of ixekizumab versus adalimumab.

^bAs qualitatively assessed by the investigator.

^cAdditionally presented in Table 1.

^dAdditionally presented in Table 2.

*p<0.001 versus placebo.

†p<0.01 versus placebo.

‡ $p \leq 0.025$ versus placebo.

§ $p < 0.05$ versus placebo.