



OPEN ACCESS

## EXTENDED REPORT

## Randomised comparison of initial triple DMARD therapy with methotrexate monotherapy in combination with low-dose glucocorticoid bridging therapy; 1-year data of the tREACH trial

P H de Jong,<sup>1</sup> J M Hazes,<sup>1</sup> H K Han,<sup>2</sup> M Huisman,<sup>3</sup> D van Zeben,<sup>3</sup>  
P A van der Lubbe,<sup>4</sup> A H Gerards,<sup>4</sup> B van Schaeybroeck,<sup>5</sup> P B de Sonnaville,<sup>6</sup>  
M V van Krugten,<sup>6</sup> J J Luime,<sup>1</sup> A E Weel<sup>1,2</sup>

**Handling editor** Tore K Kvien

► Additional material is published online only. To view please visit the journal online (<http://dx.doi.org/10.1136/annrheumdis-2013-204788>).

<sup>1</sup>Department of Rheumatology, University Medical Center, Rotterdam, The Netherlands

<sup>2</sup>Department of Rheumatology, Maastad Hospital, Rotterdam, The Netherlands

<sup>3</sup>Department of Rheumatology, Sint Franciscus Gasthuis Hospital, Rotterdam, The Netherlands

<sup>4</sup>Department of Rheumatology, Vlietland Hospital, Schiedam, The Netherlands

<sup>5</sup>Department of Rheumatology, Albert Schweitzer Hospital, Dordrecht, The Netherlands

<sup>6</sup>Department of Rheumatology, Admiraal de Ruyter Hospital, Goes & Vlissingen, The Netherlands

**Correspondence to**

Dr Pascal Hendrik Pieter de Jong, Department of Rheumatology, University Medical Center, Erasmus MC, Room Na850, Postbus 2040, Rotterdam 3000 CA, The Netherlands; [p.h.p.dejong@erasmusmc.nl](mailto:p.h.p.dejong@erasmusmc.nl)

Received 21 October 2013

Revised 14 April 2014

Accepted 16 April 2014

**ABSTRACT**

**Objectives** To compare 1-year clinical efficacy of (1) initial triple disease-modifying antirheumatic drug therapy (iTDT) with initial methotrexate (MTX) monotherapy (iMM) and (2) different glucocorticoid (GC) bridging therapies: oral versus a single intramuscular injection in early rheumatoid arthritis.

**Methods** In a single-blinded randomised clinical trial patients were randomised into three arms: (A) iTDT (methotrexate+sulfasalazine+hydroxychloroquine) with GCs intramuscularly; (B) iTDT with an oral GC tapering scheme and (C) MTX with oral GCs similar to B. Primary outcomes were (1) area under the curve (AUC) of Health Assessment Questionnaire (HAQ) and Disease Activity Score (DAS) and (2) the proportion of patients with radiographic progression.

**Results** 281 patients were randomly assigned to arms A (n=91), B (n=93) or C (n=97). The AUC DAS and HAQ were respectively -2.39 (95% CI -4.77 to -0.00) and -1.67 (95% CI -3.35 to 0.02) lower in patients receiving iTDT than in those receiving iMM. After 3 months, treatment failure occurred less often in the iTDT group, resulting in 40% fewer treatment intensifications. The difference in treatment intensifications between the arms required to maintain the predefined treatment goal remained over time. No differences were seen between the two GC bridging therapies. Respectively 21%, 24% and 23% of patients in arms A, B and C had radiographic progression after 1 year. Patients receiving iTDT had more adjustments of their medication owing to adverse events than those receiving iMM.

**Conclusions** Treatment goals are attained more quickly and maintained with fewer treatment intensifications with iTDT than with iMM. However, no difference in radiographic progression is seen. Both GC bridging therapies are equally effective and, therefore, both can be used.

**Trial registration number** ISRCTN26791028.

**INTRODUCTION**

Recently EULAR updated the recommendations for the management of rheumatoid arthritis (RA).<sup>1</sup> In patients with newly diagnosed RA the guidelines recommend that (1) the initial treatment strategy should encompass methotrexate (MTX) as monotherapy or in combination with other disease-modifying antirheumatic drugs (DMARDs),

irrespective of glucocorticoids (GCs); (2) treatment is targeted to achieve remission, or low disease activity and (3) treatment should be adjusted if there is no improvement after 3 months or the target has not been reached by 6 months. When poor prognostic factors are present, biological agents should be considered if the initial treatment strategy has failed, or otherwise one could switch to a(nother) combination of DMARDs. Functional and radiological outcomes improve if current guidelines are upheld.<sup>1,2</sup> Nevertheless, some major points for debate still exist.

First, 2010 criteria for RA<sup>3</sup> are more and more often incorporated into daily practice. All current guidelines, however, were formulated using data from studies in patients fulfilling 1987 RA criteria.<sup>1,4,5</sup> Thus trials comparing initial treatment strategies in the early phase of RA are needed for validation.

Second, several clinical trials concluded that initial combination therapy had better clinical efficacy than monotherapy; however, most rheumatologists have not implemented this in daily practice.<sup>6-10</sup> Moreover, current guidelines do not recommend combination therapy for all patients with newly diagnosed RA.<sup>1,4</sup> The principal motive for disregarding combination therapy was because (1) trials were biased by GCs, (2) patients were not DMARD naïve and (3) there were concerns about safety.<sup>11,12</sup>

Third, GCs have a rapid anti-inflammatory effect and are therefore used as bridging therapy to treat active disease in between initiation of DMARD(s) and the onset of their therapeutic effect.<sup>13</sup> However, trials specifically comparing GC bridging therapies are sparse. More trials are, therefore, needed to investigate optimal dosage and tapering schemes.

Therefore, our aim was to compare in patients with very early RA the 1-year clinical efficacy of (1) initial triple DMARD therapy (iTDT) with initial MTX monotherapy (iMM), unbiased by GCs and (2) different GC bridging therapies: oral versus a single intramuscular injection.

**PATIENTS AND METHODS****Patients**

For this study, data were used from a clinical trial (ISRCTN26791028)—namely, treatment in the

**To cite:** de Jong PH, Hazes JM, Han HK, et al. *Ann Rheum Dis* Published Online First: [please include Day Month Year] doi:10.1136/annrheumdis-2013-204788

Rotterdam Early Arthritis Cohort (tREACH).<sup>14</sup> tREACH, a multicentre, stratified single-blinded trial, is carried out in eight rheumatology centres in the Netherlands. Medical ethics committees at each participating centre approved the study protocol and all patients gave written informed consent before inclusion. Inclusion criteria for the tREACH are: age  $\geq 18$  years, arthritis in one or more joint(s) and symptom duration  $< 1$  year. Exclusion criteria for the tREACH are given in online supplement 1.

Patients were recruited from the outpatient clinics of all participating centres between July 2007 and April 2011. Eligible patients were stratified into three groups according to their likelihood of progressing to persistent arthritis based on the Visser model.<sup>15</sup> For this analysis we included the high probability stratum ( $> 70\%$  probability of developing persistent arthritis).

### Randomisation and blinding

Patients were randomised, using variable block randomisation stratified for centre, by an independent call-centre. Trained research nurses, blinded to the allocated treatment arm throughout the study, examined patients and calculated the Disease Activity Score (DAS).

### Design

Patients were randomised into three groups

- iTDT (MTX, sulfasalazine and hydroxychloroquine) with GCs intramuscularly;
- iTDT with an oral GC tapering scheme;
- iMM with oral GCs similar to B.

Concurrent treatment with non-steroidal anti-inflammatory drugs and intra-articular GC injections (maximum of two per 3 months) was allowed.

DMARD dosages were: MTX 25 mg/week orally (dosage reached after 3 weeks), sulfasalazine 2 g/day and hydroxychloroquine 400 mg/day (reduced to 200 mg/day after 3 months). GCs were given either intramuscularly (methylprednisolone 120 mg or triamcinolone 80 mg) or in an oral tapering scheme (weeks 1–4: 15 mg/day, weeks 5–6: 10 mg/day, weeks 7–8: 5 mg/day and weeks 9–10: 2.5 mg/day). All patients received folic acid (10 mg/week) during MTX prescription. Osteoporosis prophylaxis (risedronate 35 mg/week and calcium/vitamin D combination 500/400 mg/IU/day) was given to patients in treatment arms B and C, during the first 3 months.

A treat-to-target approach was used, aiming for a DAS  $< 2.4$ .<sup>16</sup> If DAS was  $\geq 2.4$  medication was intensified. Intensification steps were in the order (1) MTX+etanercept (50 mg/week, subcutaneously), (2) MTX+adalimumab (40 mg/2 weeks, subcutaneously) and (3) MTX+abatacept (500–1000 mg/4 weeks, intravenously, depending on weight). Treatment intensifications were the same for each treatment arm.

If DAS was  $< 1.6$  at two consecutive visits, medication was tapered. Hierarchically ordered tapering steps were: (1) biological agent, (2) sulfasalazine, (3) MTX and (4) hydroxychloroquine. Biological agent(s), MTX and sulfasalazine were gradually discontinued, whereas hydroxychloroquine was stopped immediately. A flare during tapering, defined as DAS  $\geq 2.4$ , resulted in restarting full treatment, according to the stage in the protocol.

### Outcomes and assessments

Patients were examined every 3 months for all outcomes, except for hand/foot radiographs, which were obtained at baseline and half-yearly.

Primary outcomes were (1) area under the curve (AUC) Health Assessment Questionnaire (HAQ) and DAS and (2) proportion of patients with radiographic progression. Secondary endpoints were disease activity (state), functional ability, EULAR response criteria,<sup>17</sup> Boolean-defined remission criteria,<sup>18</sup> self-assessed disease activity and medication usage over time and after 12 months of treatment.

DAS and its thresholds are used for disease state categorisations.<sup>16</sup> Functional ability is measured with the HAQ.<sup>19</sup> Higher HAQ scores indicate poorer function. Radiographic progression was measured with the modified Sharp–van der Heijde score (SHS).<sup>20</sup> Radiographs were read chronologically by two out of five qualified assessors, who were blinded to the patient's identity and treatment allocation.<sup>21</sup> Mean SHS are reported.<sup>22</sup> Weighted  $\kappa$  between assessors was 0.36 with 98% agreement. The proportion of patients with radiographic progression, defined as SHS change  $> 0.5$  and  $> 1.2$  (the smallest detectable change) and  $> 1.2$  a year, was also calculated.<sup>22</sup>

EULAR response criteria are based on attained level and change in DAS (see online supplement 2).<sup>17</sup> Boolean remission criteria are defined as having a tender joint count, swollen joint count, C-reactive protein (in mg/dL) and patient global assessment (0–10 scale) of  $\leq 1$ .<sup>18</sup> Self-assessed disease activity is measured with the RA Disease Activity Index questionnaire (RADAI).<sup>23</sup> Higher RADAI scores indicate more active disease.

### Safety monitoring and toxicity

Safety monitoring occurred according to Dutch guidelines,<sup>24 25</sup> which included laboratory tests at fixed intervals. Study medication was either stopped or the dosage lowered in accordance with the protocol if (serious) adverse events<sup>14</sup> were seen by the attending rheumatologist. MTX could be given subcutaneously if patients had gastrointestinal complaints. If MTX had to be stopped for safety reasons, leflunomide (20 mg/day) was substituted.<sup>14</sup>

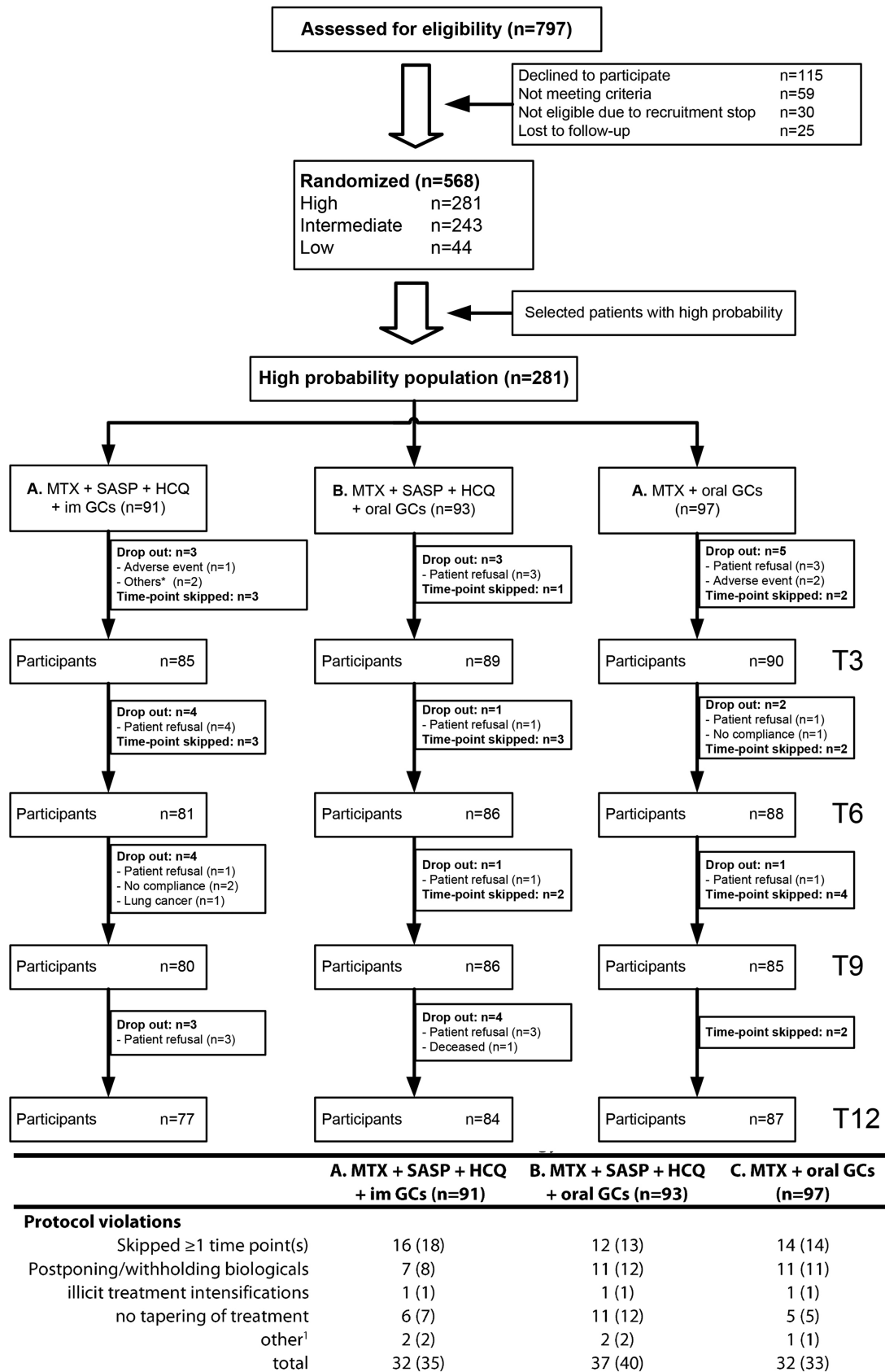
### Statistical analysis

Sample-size calculation was based upon AUC HAQ, using data from the BeSt study,<sup>7</sup> where mean AUC HAQ of combination therapy and monotherapy respectively were 7.7 (SD 5.5) and 10.5 (SD 7.4). A target sample size of 270 patients per probability stratum and thus 90 patients per arm, was needed to detect the mentioned difference with a power of 80% and two-sided  $\alpha = 0.05$ . This size is sufficient to detect a difference of 6.1 AUC DAS and 20% difference in radiographic progression.<sup>14</sup>

Clinical efficacy was calculated in an modified intention-to-treat (mITT) and per-protocol analysis. In mITT analyses patients are analysed in the groups to which they were randomised, regardless of whether they received or adhered to the allocated intervention. For the primary, but not the secondary, outcomes missing values are imputed. Statistical comparison of the baseline characteristics and outcomes (after 12 months) between iTDT and iMM (arms B vs C) and both GC bridging therapies (arms A vs B) were made by Student t test,  $\chi^2$  test or Wilcoxon rank-sum test, as appropriate.

We used the AUC to compare DAS and HAQ over time between treatment arms, in which missing values at each time-point were substituted with the mean value of the corresponding treatment arm. Radiographic progression was extrapolated or interpolated if the SHS was missing after 12 months.

We also performed adjusted analyses for our primary outcomes, in which we corrected for baseline imbalances, rheumatoid factor, anti-citrullinated protein/peptide antibodies and baseline HAQ, DAS or SHS, as appropriate, using multivariate analyses.



**Figure 1** Trial profile and protocol violations. Results are shown as number (%). <sup>1</sup>Other reasons are: 3× no compliance, 1× pregnancy wish and 1× continuation of SASP after switch to etanercept. The figure shows the flowchart of the tREACH trial, whereas the table shows the protocol violations within the tREACH trial during the first year of follow-up. Other reasons for dropping out, in the flowchart, were incorrect randomisation and problems with communication. GCs, glucocorticoids; HCQ, hydroxychloroquine; IM, intramuscular; MTX, methotrexate; SASP, sulfasalazine; tREACH, treatment in the Rotterdam Early Arthritis Cohort.

All analyses were performed for patients in the high-probability stratum and two subgroups consisting of patients with RA according to 1987 and 2010 criteria.<sup>3 5</sup> All statistical analyses were carried out using STATA V.12.0. A p value <0.05 was considered statistically significant.

**RESULTS**

**Patients**

A total of 797 patients were assessed for eligibility and of those, 568 were included. In the high-probability stratum 281 patients were randomly assigned to treatment arm A (n=91), B (n=93) or C (n=97) (figure 1). Besides an mITT analysis, we also performed a per-protocol analysis. We excluded, from our per-protocol analysis, respectively 32 (35%), 37 (40%) and 32 (33%) patients randomised to arms A, B and C (figure 1). At baseline, the symptom duration and patients fulfilling 1987 criteria for RA differed significantly between arms (table 1).

**Clinical outcome**

The difference in AUC DAS between iTDT and iMM was -2.39 (95% CI -4.77 to -0.00, p=0.0497), and -0.91 (95% CI -3.17 to 1.34, p=0.42) between both GC bridging therapies. Adjusted differences were respectively -2.61 (95% CI -4.55 to -0.66, p=0.009) and -0.015 (95% CI -1.96 to 1.99, p=0.99). The largest difference in disease activity (states) between treatment arms was seen after 3 months, after which it gradually

diminished (figure 2). After 12 months DAS was 0.08 (95% CI -0.34 to 0.19) lower in patients with iTDT than in those with iMM. Difference in DAS between the different GC bridging therapies was -0.20 (95% CI -0.45 to 0.04). Similar results were found in our multivariate analyses (data not shown). No differences in disease activity states were found after 12 months between iTDT and iMM, or between the two GC bridging therapies (table 2). DAS and its components over time per treatment arm are given in online supplement 4.

There was no significant difference in SHS after 12 months of treatment (table 2). Respectively 21%, 24% and 23% of patients in arms A, B and C had radiographic progression. The cumulative probability plots for the three treatment arms were superimposable (see online supplement 3).

Functional improvement was seen in all patients. Difference in AUC HAQ between iTDT and iMM was -1.67 (95% CI -3.35 to 0.02, p=0.052), and -0.46 (95% CI -2.04 to 1.12, p=0.57) between both GC bridging therapies (figure 2). Adjusted differences were, respectively, -1.30 (95% CI -2.45 to -0.14, p=0.028) and 0.33 (95% CI -0.84 to 1.51, p=0.58). No significant difference in functional ability was seen after 12 months (table 2). Secondary endpoints are shown in table 2 and figure 2.

We also performed a per-protocol analysis, which showed similar results (data not shown). The above-mentioned analyses were performed in both subgroups, and produced similar results (see online supplement 5 and 6).

**Table 1** Baseline characteristics and clinical response after 12 months for each induction therapy group, according to intention-to-treat

Characteristics	A. MTX+SASP+HCQ+IM GCs (n=91)	B. MTX+SASP+HCQ+oral GCs (n=93)	C. MTX+oral GCs (n=97)
<b>Demographic</b>			
Age (years), mean (SD)	53 (15)	54 (14)	54 (14)
Sex, female, n (%)	55 (60)	67 (72)	68 (70)
<b>Disease characteristics</b>			
Symptom duration (days), mean (SD)*	162 (98)	184 (92)	154 (83)
ACPA positive, n (%)	74 (81)	67 (72)	75 (77)
RF positive, n (%)	69 (76)	65 (70)	65 (67)
Fulfilment of RA criteria, n (%)			
1987†	69 (76)	57 (61)	63 (65)
2010	87 (96)	88 (95)	95 (98)
<b>Disease activity</b>			
DAS, mean (SD)	3.28 (0.82)	3.40 (1.07)	3.38 (0.97)
TJC44, median (IQR)	8 (4–14)	9 (5–15)	10 (4–14)
SJC44, median (IQR)	8 (5–12)	7 (4–12)	7 (4–12)
General health, median (IQR)‡	52 (34–70)	55 (29–69)	53 (38–70)
ESR in mm/h, median (IQR)	27 (14–40)	22 (13–40)	24 (14–42)
CRP in mg/L, median (IQR)	8 (3.5–23)	6.5 (4.5–19)	11 (5–26)
<b>Radiographs (hand/foot)</b>			
Total SHS (0–488), median (IQR)	0.5 (0–2)	0.5 (0–2)	1 (0–2.5)
Erosion score (0–280), median (IQR)	0 (0–1)	0 (0–1)	0.5 (0–1)
JSN score (0–168), median (IQR)	0 (0–1)	0 (0–1)	0 (0–1.5)
Erosive disease, n (%)§	10 (11)	6 (6)	8 (8)
<b>Patient-reported outcomes¶</b>			
HAQ, mean (SD)	0.98 (0.67) (n=84)	0.96 (0.64) (n=86)	1.06 (0.68) (n=92)
RADAI (0–10), mean (SD)	3.97 (1.83) (n=81)	3.94 (1.61) (n=82)	4.21 (1.82) (n=87)

\*p=0.018 for B versus C.

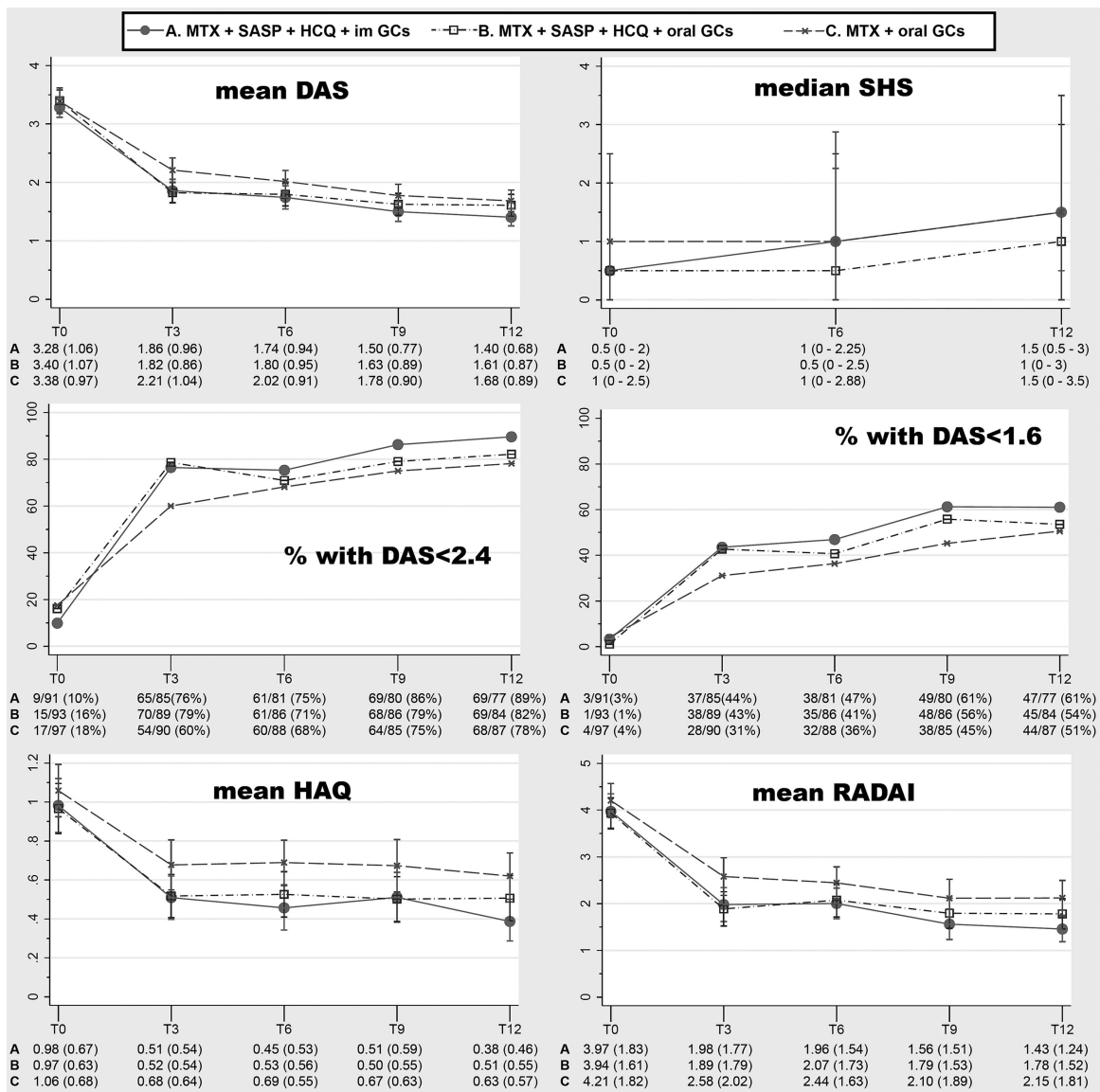
†p=0.034 for A versus B.

‡General health is measured with a Visual Analogue Scale from 0 to 100 mm.

§Erosive disease is defined as having an erosion score >1 in three separate joints.<sup>36</sup>

¶Not everyone filled in a (complete) questionnaire and therefore n is different for HAQ and RADAI.

ACPA, anti-citrullinated protein/peptide antibodies; CRP, C-reactive protein; DAS, Disease Activity Score; ESR, erythrocyte sedimentation rate; GCs, glucocorticoids; HAQ, Health Assessment Questionnaire; HCQ, hydroxychloroquine; IM, intramuscular; JSN, joint space narrowing; MTX, methotrexate; RA, rheumatoid arthritis; RADAI, RA Disease Activity Index questionnaire; RF, rheumatoid factor; SASP, sulfasalazine; SHS, modified Sharp–Van der Heijde score; SJC44, swollen joint count (44 joints); TJC44, tender joint count (44 joints).



**Figure 2** (Self-assessed) disease activity, functional ability and radiographic joint damage over time, stratified for induction therapy. Error bars indicate respectively 95% CIs and IQR for given means and median. DAS, Disease Activity Score; GCs, glucocorticoids; HAQ, Health Assessment Questionnaire; HCQ, hydroxychloroquine; IM, intramuscular; MTX, methotrexate; RADAI, Rheumatoid Arthritis Disease Activity Index questionnaire; SASP, sulfasalazine; SHS, modified Sharp–Van der Heijde score.

**Medication**

After 3 months 40% fewer biological agents were prescribed in the iTDT group than in the iMM group. This difference remained over time (figure 3). After 12 months, respectively 27% and 43% of patients, receiving iTDT and iMM, were using a biological agent (p=0.03). Moreover, for more patients receiving iMM their first biological agent had failed (16% vs 6%, p=0.03) (figure 3). In 117/281 (42%) of patients treatment could be tapered at one or more time points, and of those, 14/117 (12%) flared. Treatment could be tapered in all treatment arms, without differences in flare rates (figure 3). Biological usage did not differ between the two GC bridging therapies (figure 3). This analysis was also performed in both subgroups and showed similar results (see online supplements 5 and 6).

**Adverse events (AEs)**

No differences in serious AEs were seen (table 3). However, the proportion of patients with medication adjustments due to AEs

differed significantly between iTDT and iMM (60/93 (65%) and 44/97 (45%), p=0.008). Besides switching to MTX subcutaneously, these differences vanished after stratification for drug (table 3). No differences were seen between the two GC bridging therapies. Most treatment adjustments occurred in the first 3 months (51/159, 32%). Among all patients gastrointestinal complaints and fatigue were the most commonly reported AEs, respectively 56% and 36% (table 3).

**DISCUSSION**

In this study, unbiased for GCs, we showed that the AUC DAS was significantly less in the iTDT group than in the iMM group. A trend was observed for the AUC HAQ. Treatment goals were attained more quickly and maintained with 40% fewer treatment intensifications in the iTDT group. Moreover, for more patients receiving iMM their first biological agent had failed, reducing therapeutic options. Disease activity, functional ability and radiographic progression, after 12 months, did not differ between

**Table 2** Clinical response for each induction therapy group, according to intention-to-treat

Clinical response	A. MTX+SASP+HCQ+IM GCs (n=77)	B. MTX+SASP+HCQ+oral GCs (n=84)	C. MTX+oral GCs (n=87)
<b>Disease activity</b>			
AUC DAS, mean (SD)*	22.32 (7.16) (n=91)	23.24 (8.31) (n=93)	25.63 (8.37) (n=97)
DAS, mean (SD)	1.40 (0.68)	1.61 (0.87)	1.68 (0.89)
TJC44, median (IQR)	0 (0–2)	0 (0–4)	1 (0–4)
SJC44, median (IQR)†	0 (0–2)	0 (0–1)	0 (0–2)
General health, median (IQR)‡	18 (8–32)	22.5 (9.5–37.5)	23 (10–40)
ESR in mm/h, median (IQR)	11 (5–18)	10.5 (6.5–20.5)	12 (6–21)
CRP in mg/L, median (IQR)	3 (1–5.2)	4 (1–7)	3 (1.9–5)
ΔDAS (T12–T0), mean (SD)	–1.83 (–1.03)	–1.75 (–1.14)	–1.69 (–1.27)
<b>Disease state according to DAS, n (%)</b>			
Moderate to high disease activity (DAS ≥2.4)	8 (10)	15 (18)	19 (22)
Low disease activity (1.6 ≤ DAS <2.4)	22 (29)	24 (29)	24 (28)
Remission (DAS <1.6)	47 (61)	45 (54)	44 (51)
Boolean remission criteria, n (%)§	17 (22)	13 (16)	14 (16)
<b>EULAR response criteria (T12–T0), n (%)¶</b>			
Good	54 (70)	52 (62)	57 (66)
Moderate	13 (17)	19 (23)	9 (10)
None	10 (13)	13 (15)	21 (24)
<b>Radiographs (hand/foot)</b>			
Total SHS (0–488), median (IQR)	1 (0–3)	1 (0–3)	1 (0–3.5)
Erosion score (0–280), median (IQR)	0.5 (0–1.25)	0.5 (0–1.5)	0.5 (0–1.5)
JSN score (0–168), median (IQR)	0.5 (0–1.5)	0 (0–1.5)	0.5 (0–1.5)
ΔTotal SHS (T12–T0), median (IQR)	0.13 (0–1)	0 (0–1)	0 (0–1)
Patients with progression >0.5, n (%)	25 (33)	24 (29)	28 (33)
Patients with progression >1.2, n (%)	16 (21)	20 (24)	19 (23)
Erosive disease, n (%)**	8 (10)	19 (23)	15 (17)
<b>Patient-reported outcomes††</b>			
AUC HAQ, mean (SD)	6.46 (4.96) (n=84)	6.92 (5.43) (n=86)	8.59 (5.90) (n=92)
HAQ, mean (SD)	0.38 (0.46) (n=69)	0.51 (0.55) (n=78)	0.63 (0.57) (n=82)
ΔHAQ (T12–T0), mean (SD)	–0.48 (–0.63) (n=65)	–0.42 (–0.59) (n=74)	–0.47 (–0.53) (n=80)
RADAI (0–10), mean (SD)	1.43 (1.24) (n=68)	1.78 (1.52) (n=75)	2.15 (1.81) (n=79)
ΔRADAI (T12–T0), mean (SD)	–2.22 (–1.68) (n=63)	–2.06 (–1.87) (n=69)	–2.11 (–1.91) (n=74)

\*p=0.0497 for B versus C.

†p=0.022 for B versus C.

‡General health is measured with a Visual Analogue Scale from 0 to 100 mm.

§Boolean remission criteria are defined as having a TJC44 ≤1, SJC44 ≤1, VAS global ≤10 mm and CRP ≤10 mg/L.

¶EULAR response criteria are based on attained level and change in DAS.

\*\*Erosive disease is defined as having an erosion score >1 in three separate joints.<sup>36</sup>

††Not everyone filled in a (complete) questionnaire and therefore n is different for HAQ and RADAI.

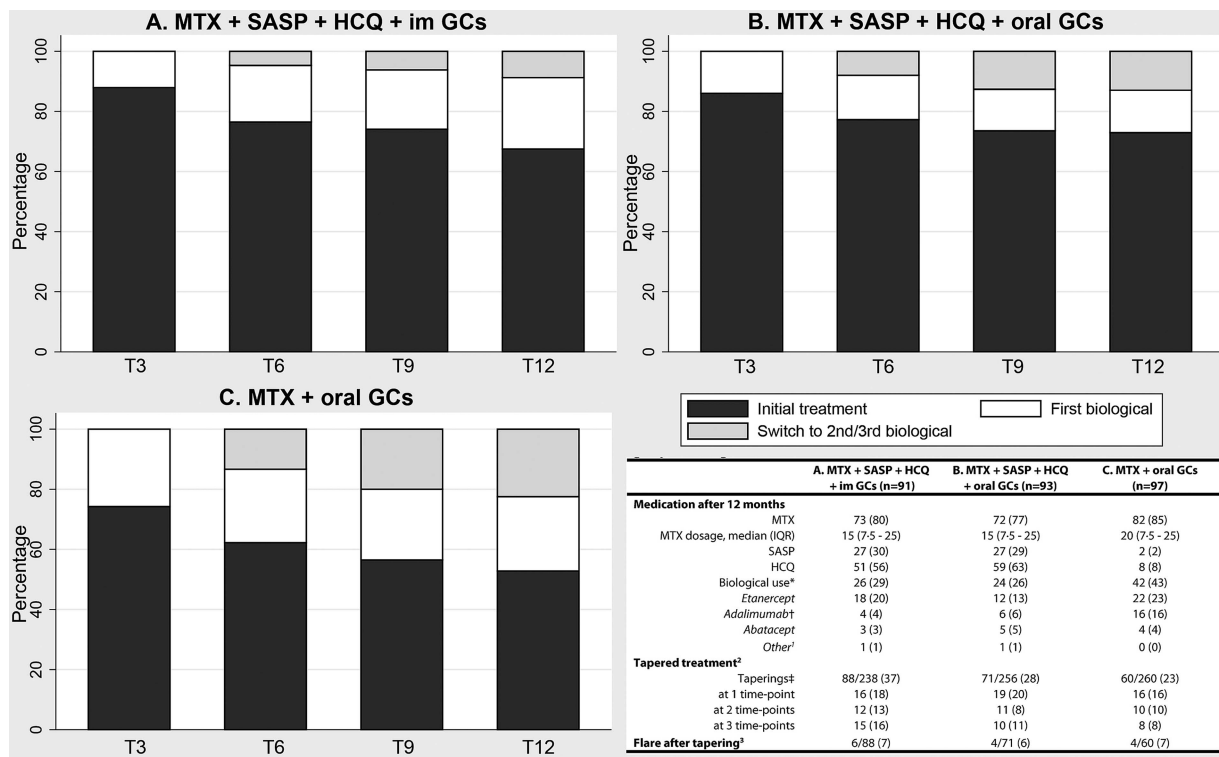
AUC, area under the curve; CRP, C-reactive protein; DAS, Disease Activity Score; ESR, erythrocyte sedimentation rate; GCs, glucocorticoids; HAQ, Health Assessment Questionnaire; HCQ, hydroxychloroquine; IM, intramuscular; JSN, joint space narrowing; MTX, methotrexate; RADAI, Rheumatoid Arthritis Disease Activity Index questionnaire; SASP, sulfasalazine; SHS, modified Sharp–Van der Heijde score; SJC44, swollen joint count (44 joints); TJC44, tender joint count (44 joints); VAS, visual analogue scale.

iTDT and iMM. No differences in serious AEs were seen. However, patients receiving iTDT had more medication adjustments due to AEs than the iMM group. Treatment could be tapered in all treatment arms, without differences in flare rates. No differences were seen between the two GC bridging therapies.

We were able to analyse the difference in efficacy between iTDT and iMM, unbiased for GCs and in DMARD-naïve patients. We found no difference in disease activity, functional ability and radiographic progression after 12 months of treatment, owing to our treat-to-target approach (intensifying treatment until the target is reached). Therefore, it is not the endpoint, but progress towards the endpoint which matters most. Aletaha *et al*<sup>26</sup> have shown that the initial clinical response is related to long-term disease activity and, indirectly, the level of joint destruction and treatment changes needed to achieve the predefined treatment goals. With iTDT, treatment goals were attained more quickly, resulting in fewer treatment alterations, including the prescription of 40% fewer

biological agents. However, no differences in radiographic progression were seen, which was probably owing to early initiation of intensive treatment, resulting in less joint destruction and thus less radiological progression. Moreover, the early initiation of biological agents in the iMM group might have prevented/delayed the radiographic progression.

In our trial switching to biological agents was possible after 3 months, if the target had not been reached. In the iMM group one might argue that triple DMARD therapy rather than biological agents should be the first step-up, especially since there is no evidence that step-up to a biological agent rather than triple DMARD therapy results in better clinical efficacy.<sup>10 27 28</sup> Moreover, the updated EULAR guidelines only recommend switching to biological agents after 3 months if (1) there is no improvement in disease activity and (2) poor prognostic factors are present (ie, autoantibody positivity and erosive disease).<sup>1</sup> Twenty of the 36 (56%) patients for whom iMM treatment had failed after 3 months were EULAR non-responders, defined as



**Figure 3** Withdrawal, flares and medication usage over time and after 12 months, stratified for induction therapy. Results are shown as number (%) unless stated otherwise. <sup>1</sup>Other biological agents are: infliximab (A) and rituximab (B). <sup>2</sup>Treatment could be tapered after 6 months. Therefore the total amount of possible taperings is the sum of all assessments at the last three visits per treatment arm. <sup>3</sup>A flare is defined as a Disease Activity Score  $\geq 2.4$ . The proportion is calculated by dividing the number of flares by the total number of taperings. \* $p=0.011$  for B versus C. † $p=0.031$  for B versus C. ‡ $p=0.028$  for A versus B. GCs, glucocorticoids; HCQ, hydroxychloroquine; IM, intramuscular; MTX, methotrexate; SASP, sulfasalazine.

having a DAS  $>2.4$  and  $<0.6$  decline in DAS from baseline, with poor prognostic factors. Therefore, we think intensification to biological agents after iMM treatment had failed was reasonable.

For economic reasons efficient use of biological agents is needed to be able to continue optimal rheumatic care in the future.<sup>29</sup> With iTDT treatment, goals are attained more quickly and maintained with 40% fewer biological agents, reducing costs enormously. Better disease control improves worker productivity, and thus costs due to loss of productivity are also reduced.<sup>30-31</sup> However, the cost-utility analysis of the tREACH trial still has to reconfirm this statement.

Patients and/or rheumatologists, however, may be averse to iTDT treatment, mainly because of the large amount of drugs that have to be taken. Medication adherence in RA is strongly influenced by a patient's belief about the need for the drugs.<sup>32</sup> These beliefs are moulded by rheumatologists through the information given about the disease and treatment approach.<sup>32</sup> A personalised medicine approach would be ideal in this very early phase, especially since 60% respond well to iMM; conversely, therefore, some patients receiving iTDT are overtreated. Determination of early GC response after treatment initiation is a promising predictor, possibly leading to a more personalised medicine approach.<sup>33</sup> Therefore, we think that future research should focus on developing a more personalised treatment approach, in which differentiation between patients who would thrive on iMM and those who need iTDT might be a first step.

In 42% of patients treatment could be tapered, and of those, 12% flared. Therefore, we think tapering DMARDs and/or biological agents is justified in patients with sustained remission.

However, patients should still be monitored strictly during tapering. Data on tapering medication are sparse, especially in early RA.<sup>1-34</sup> Future research is needed to determine (1) when to start tapering, (2) how to taper and (3) the optimal interval between taperings.

We found that intramuscular and oral GCs are equally effective as bridging therapy, but one single injection might be more feasible. However, duration of our GC tapering scheme was short (10 weeks) and the initial dosage was low (15 mg) in comparison with, for example, the COBRA regimen (respectively 28 weeks and 60 mg).<sup>9</sup> Because GCs have disease-modifying traits with longlasting benefits even after withdrawal, a different GC oral tapering scheme might be superior.<sup>13</sup> However, if we compare our iMM treatment with the COBRA-light strategy, intensification to biological agents after 6 months is equally indicated (respectively 36% and 41%).<sup>35</sup> In the COBRA-light trial, however, the treatment goal is remission instead of low disease activity, which prevents useful direct comparison.<sup>35</sup> Therefore, future research is needed for optimising GC bridging therapies.

Our study had certain limitations. Foremost, baseline imbalances occurred, despite randomisation, which is why we also performed an adjusted analysis. After adjustment similar results were found for the primary outcomes, but the difference in AUC HAQ became significant (favouring iTDT). Additionally, only research nurses, who assessed the DAS, were blinded to the allocated treatment arm. This design was chosen, since we wanted to mimic daily practice as far as possible. Single blinding, however, might be a potential source of bias, because of the aversion for iTDT by rheumatologists and/or patients (favouring iMM) or (un)intentional misinformation due to the

**Table 3** Number (%) of patients with (serious) adverse events and treatment alterations due to side effects for each induction therapy group

	A. MTX+SASP+ HCQ+IM GCs (n=91)	B. MTX+SASP+ HCQ+oral GCs (n=93)	C. MTX+oral GCs (n=97)
<b>Adverse events (AEs)</b>			
Serious AE(s)*	5 (5)	10 (11)	10 (10)
Patients with ≥1 AE(s)	76 (84)	82 (88)	77 (79)
No. of AEs per patient, median (IQR) IQR	2 (1–3)	2 (1–4)	2 (1–4)
<b>Medication changes due to AEs</b>			
Switch to MTX SC†	12 (13)	21 (23)	11 (11)
Lowering MTX dosage <20 mg/wk‡	17 (19)	10 (11)	22 (23)
Stop MTX	11 (12)	14 (15)	7 (7)
Stop SASP	11 (12)	8 (9)	NA
Stop HCQ	4 (4)	5 (5)	NA
Stop biological agents§	0 (0)	2 (2)	4 (4)
<b>Observed AEs¶</b>			
Malaise	20 (22)	19 (20)	15 (15)
Fatigue	23 (25)	34 (37)	40 (41)
Dizziness	2 (2)	10 (11)	7 (7)
Headache	10 (11)	13 (14)	13 (13)
Muscle weakness	2 (2)	8 (9)	7 (7)
Hypertension	2 (2)	4 (4)	0 (0)
Palpitations	0 (0)	4 (4)	7 (7)
Oedema	3 (3)	3 (3)	6 (6)
Dyspnoea	0 (0)	4 (4)	7 (7)
Gastrointestinal complaints	57 (63)	59 (63)	41 (42)
Infection	12 (13)	21 (23)	22 (23)
Skin problems	20 (22)	25 (27)	27 (28)
Hair loss	8 (8)	7 (8)	14 (14)
Hearing loss	1 (1)	0 (0)	0 (0)
Visual impairment	7 (8)	17 (18)	7 (7)
Hyperglycaemia	0 (0)	1 (1)	0 (0)
Feeling 'sad'	7 (8)	13 (14)	12 (12)
Sleep disorder	4 (4)	13 (14)	8 (8)
Bone marrow depression	17 (19)	8 (9)	7 (7)
High creatinine	2 (2)	6 (6)	4 (4)
Elevated liver enzymes	12 (13)	15 (16)	18 (19)

Results shown are a number (%) unless stated otherwise.

\*Serious AEs per treatment are respectively: arm (A) 4× hospitalisation (2× pneumonia, kidney stones and inguinal hernia surgery), 1× lung carcinoma; arm (B) 5× hospitalisation (MTX pneumonitis, severe constipation, transient ischaemic attack, gastroenteritis and observation chest pain), 1× deceased, 1× myocardial infarction and 2× carcinoma (lung and mamma); arm (C) 6× hospitalisation (pneumonia, blood transfusion, syncope, cholecystectomy, inguinal hernia surgery and active rheumatoid arthritis), 1× myocardial infarction, 2× colon carcinoma and 1× maculopathy.

†p=0.039 for B versus C.

‡p=0.028 for B versus C.

§The reasons for stopping biological agents are positive tuberculosis screening (3× in arm C), prostate carcinoma (1× arm B), allergic reaction (1× arm C) and recurrent infections (1× arm B).

¶Bone marrow depression is defined as an anaemia, thrombocytopenia or leucopenia with respectively a haemoglobin level, platelet count and white blood cells count below the lower limit of the normal range. High creatinine, raised liver enzymes and hyperglycaemia are defined as having respectively a creatinine, liver transaminases and glucose level above the upper limit of the normal range. GCs, glucocorticoids; HCQ, hydroxychloroquine; IM, intramuscular; MTX, methotrexate; SASP, sulfasalazine; SC, subcutaneous.

rheumatologist's beliefs (favouring iTDT). Moreover, for various reasons 101 (36%) patients were excluded from our per-protocol analysis, which was more than expected. Our exclusion percentage, however, was comparable with that of other trials.<sup>9–10 27</sup>

In conclusion, in our treat-to-target design, treatment goals were attained more quickly and maintained with fewer treatment intensifications, with iTDT than with iMM. However, no difference was seen in radiographic progression. Before choosing the initial treatment strategy, rheumatologists should be aware of the benefits and risks, but additionally, known prognostic factors and the patient's wish should be taken into account. One single intramuscular GC injection and a low-dose oral GC tapering scheme would be sufficient as bridging therapy.

**Acknowledgements** We thank all patients who are enrolled in the tREACH trial. Without their active cooperation, our trial would not be possible. The tREACH trial comprises the following rheumatology centres: Erasmus MC, Rotterdam; Sint Franciscus Gasthuis, Rotterdam; Maasstad Ziekenhuis, Rotterdam; Vlietland Ziekenhuis, Schiedam; Admiraal de Ruyter Ziekenhuis, Goes and Vlissingen; Zorgzaam Ziekenhuis, Terneuzen; Albert Schweitzer Ziekenhuis, Dordrecht. We thank the following people (in alphabetical order) from all centres, for their contribution to the tREACH trial: Aartsen R, Alfenaar C, Alves C, Arendse R, Arnoldus M, Baak-Dijkstra M, Bal-overzier J, Barendregt P, Basoski N, Beer S, Berkel D, Bonte F, Born van den M, Breukelen van D, Bron S, Buijs H, Buijs N, Cambier M, Cate ten D, Claessen S, Colin E, Dekker A, Dolhain R, Donze M, Fodili F, Gerards A, Goudeketting G, Grillet de B, Haasnoot H, Hamelink B, Han K, Houdt van Y, Hove van L, Huisman M, Jager de J, Jager de M, Jasperse J, Jonkers C, Joziassse S, Kaal-Alfenaar C, Klootwijk K, Krommenhoek T, Krugten van M, Kuijper T, Lam Tse W, Leemput van H, Legierse C, Lenssinck M, Lubbe van de P, Maclean P, Man de Y, Matena D, Molenaar A, Mous L, Nijs J, Paassen van B, Quax R, Reijnierse J, Romme A, Rotte de M, Saltzherr M, Schaebybroeck B, Schardin G, Schrauwen S, Sonnaville de P, Steenwinkel de F, Sturm L, Sutter T, Tchetverikov I, Tusschenbroek D, Veldman R, Vis M, Voordt van der A, Voorneveld H, Vroed de M, Walravens M, Walter M, Werff van de N, Westeinde van het A, Wiele J, Willemsse M, Wouter J, Zandbergen W, Zeben van D, Zwart H.

**Contributors** All authors contributed to the conception or design of the trial; or the acquisition, analysis, or interpretation of data for the work; drafting or revision of the manuscript; and final approval of the manuscript for publication.

**Funding** This work was supported by an unrestricted grant from Pfizer bv. [0881–102217]. Pfizer had no involvement in the study design; in collection, analysis and interpretation of data; writing of the report; and decision to submit for publication. The corresponding author had full access to all data and had final responsibility for the decision to submit for publication. Data management was sponsored by the Dutch Arthritis Foundation.

**Competing interests** None.

**Ethics approval** Ethics committee of the Erasmus MC.

**Provenance and peer review** Not commissioned; externally peer reviewed.

**Open Access** This is an Open Access article distributed in accordance with the Creative Commons Attribution Non Commercial (CC BY-NC 3.0) license, which permits others to distribute, remix, adapt, build upon this work non-commercially, and license their derivative works on different terms, provided the original work is properly cited and the use is non-commercial. See: <http://creativecommons.org/licenses/by-nc/3.0/>

## REFERENCES

- Smolen JS, Landewe R, Breedveld FC, et al. EULAR recommendations for the management of rheumatoid arthritis with synthetic and biological disease-modifying antirheumatic drugs: 2013 update. *Ann Rheum Dis* 2014;73:492–509.
- Scott DL, Wolfe F, Huizinga TW. Rheumatoid arthritis. *Lancet* 2010;376:1094–108.
- Aletaha D, Neogi T, Silman AJ 3rd, et al. 2010 rheumatoid arthritis classification criteria: an American College of Rheumatology/European League Against Rheumatism collaborative initiative. *Ann Rheum Dis* 2010;69:1580–8.
- Singh JA, Furst DE, Bharat A, et al. 2012 update of the 2008 American College of Rheumatology recommendations for the use of disease-modifying antirheumatic drugs and biologic agents in the treatment of rheumatoid arthritis. *Arthritis Care Res (Hoboken)* 2012;64:625–39.
- Arnett FC, Edworthy SM, Bloch DA, et al. The American Rheumatism Association 1987 revised criteria for the classification of rheumatoid arthritis. *Arthritis Rheum* 1988;31:315–24.
- O'Dell JR, Haire CE, Erikson N, et al. Treatment of rheumatoid arthritis with methotrexate alone, sulfasalazine and hydroxychloroquine, or a combination of all three medications. *N Engl J Med* 1996;334:1287–91.
- Goekoop-Ruiterman YP, de Vries-Bouwstra JK, Allaart CF, et al. Clinical and radiographic outcomes of four different treatment strategies in patients with early



- rheumatoid arthritis (the BeSt study): a randomized, controlled trial. *Arthritis Rheum* 2005;52:3381–90.
- 8 Mottonen T, Hannonen P, Leirisalo-Repo M, et al Comparison of combination therapy with single-drug therapy in early rheumatoid arthritis: a randomised trial. FIN-RACO trial group. *Lancet* 1999;353:1568–73.
  - 9 Boers M, Verhoeven AC, Markusse HM, et al Randomised comparison of combined step-down prednisolone, methotrexate and sulphasalazine with sulphasalazine alone in early rheumatoid arthritis. *Lancet* 1997;350:309–18.
  - 10 Moreland LW, O'Dell JR, Paulus HE, et al A randomized comparative effectiveness study of oral triple therapy versus etanercept plus methotrexate in early aggressive rheumatoid arthritis: the treatment of Early Aggressive Rheumatoid Arthritis Trial. *Arthritis Rheum* 2012;64:2824–35.
  - 11 Smolen JS, Aletaha D, Keystone EC, et al Superior efficacy of combination therapy for rheumatoid arthritis: fact or fiction? *Arthritis Rheum* 2005;52:2975–83.
  - 12 Katchamart W, Trudeau J, Phumethum V, et al Efficacy and toxicity of methotrexate (MTX) monotherapy versus MTX combination therapy with non-biological disease-modifying antirheumatic drugs in rheumatoid arthritis: a systematic review and meta-analysis. *Ann Rheum Dis* 2009;68:1105–12.
  - 13 Hoes JN, Jacobs JW, Buttgerit F, et al Current view of glucocorticoid co-therapy with DMARDs in rheumatoid arthritis. *Nat Rev Rheumatol* 2010;6:693–702.
  - 14 Claessen SJ, Hazes JM, Huisman MA, et al Use of risk stratification to target therapies in patients with recent onset arthritis; design of a prospective randomized multicenter controlled trial. *BMC Musculoskelet Disord* 2009;10:71.
  - 15 Visser H, le Cessie S, Vos K, et al How to diagnose rheumatoid arthritis early: a prediction model for persistent (erosive) arthritis. *Arthritis Rheum* 2002;46:357–65.
  - 16 van der Heijde DM, van 't Hof M, van Riel PL, et al Development of a disease activity score based on judgment in clinical practice by rheumatologists. *J Rheumatol* 1993;20:579–81.
  - 17 van Gestel AM, Prevoo ML, van 't Hof MA, et al Development and validation of the European League Against Rheumatism response criteria for rheumatoid arthritis. Comparison with the preliminary American College of Rheumatology and the World Health Organization/International League Against Rheumatism Criteria. *Arthritis Rheum* 1996;39:34–40.
  - 18 Felson DT, Smolen JS, Wells G, et al American College of Rheumatology/European League against Rheumatism provisional definition of remission in rheumatoid arthritis for clinical trials. *Ann Rheum Dis* 2011;70:404–13.
  - 19 Siegert CE, Vleming LJ, Vandenbroucke JP, et al Measurement of disability in Dutch rheumatoid arthritis patients. *Clin Rheumatol* 1984;3:305–9.
  - 20 van der Heijde D. How to read radiographs according to the Sharp/van der Heijde method. *J Rheumatol* 1999;26:743–5.
  - 21 van Tuyll LH, van der Heijde D, Knol DL, et al Chronological reading of radiographs in rheumatoid arthritis increases efficiency and does not lead to bias. *Ann Rheum Dis* 2014;73:391–5.
  - 22 van der Heijde D, Simon L, Smolen J, et al How to report radiographic data in randomized clinical trials in rheumatoid arthritis: guidelines from a roundtable discussion. *Arthritis Rheum* 2002;47:215–18.
  - 23 Stucki G, Liang MH, Stucki S, et al A self-administered rheumatoid arthritis disease activity index (RADAI) for epidemiologic research. Psychometric properties and correlation with parameters of disease activity. *Arthritis Rheum* 1995;38:795–8.
  - 24 Nederlandse Vereniging van Reumatologie. NVR Richtlijnen medicijnen: methotrexaat. 2009:1–4. <http://www.nvr.nl/uploads/ki/tO/kitOmw9WmZQBHEq61H4YMQ/NVR-Medicijnen-MTX-richtlijn-2009-update-2011.pdf> (accessed 27 Apr 2014).
  - 25 Nederlandse Vereniging van Reumatologie. NVR Richtlijnen medicijnen: sulfasalazine. 2002:1–6. <http://www.nvr.nl/uploads/ki/tO/kitOmw9WmZQBHEq61H4YMQ/NVR-Medicijnen-richtlijn-Sulfasalazine-2002.pdf> (accessed 27 Apr 2014).
  - 26 Aletaha D, Funovits J, Keystone EC, et al Disease activity early in the course of treatment predicts response to therapy after one year in rheumatoid arthritis patients. *Arthritis Rheum* 2007;56:3226–35.
  - 27 van Vollenhoven RF, Geborek P, Forslund K, et al Conventional combination treatment versus biological treatment in methotrexate-refractory early rheumatoid arthritis: 2 year follow-up of the randomised, non-blinded, parallel-group Swefot trial. *Lancet* 2012;379:1712–20.
  - 28 O'Dell JR, Mikuls TR, Taylor TH, et al Therapies for active rheumatoid arthritis after methotrexate failure. *N Engl J Med* 2013;369:307–18.
  - 29 Schoels M, Wong J, Scott DL, et al Economic aspects of treatment options in rheumatoid arthritis: a systematic literature review informing the EULAR recommendations for the management of rheumatoid arthritis. *Ann Rheum Dis* 2010;69:995–1003.
  - 30 Chaparro Del Moral R, Rillo OL, Casalla L, et al Work productivity in rheumatoid arthritis: relationship with clinical and radiological features. *Arthritis* 2012;2012:137635.
  - 31 Barnabe C, Thanh NX, Ohinmaa A, et al Healthcare service utilisation costs are reduced when rheumatoid arthritis patients achieve sustained remission. *Ann Rheum Dis* 2013;72:1664–8.
  - 32 Pasma A, Van't Spijker A, Hazes JM, et al Factors associated with adherence to pharmaceutical treatment for rheumatoid arthritis patients: a systematic review. *Semin Arthritis Rheum* 2013;43:18–28.
  - 33 de Jong PH, Quax RA, Huisman M, et al Response to glucocorticoids at 2 weeks predicts the effectiveness of DMARD induction therapy at 3 months: post hoc analyses from the tREACH study. *Ann Rheum Dis* 2013;72:1659–63.
  - 34 Klarenbeek NB, van der Kooij SM, Guler-Yuksel M, et al Discontinuing treatment in patients with rheumatoid arthritis in sustained clinical remission: exploratory analyses from the BeSt study. *Ann Rheum Dis* 2011;70:315–19.
  - 35 den Uyl D, Ter Wee M, Boers M, et al A non-inferiority trial of an attenuated combination strategy ('COBRA-light') compared to the original COBRA strategy: clinical results after 26 weeks. *Ann Rheum Dis* 2014;73:1072–9.
  - 36 van der Heijde D, van der Helm-van Mil AH, Aletaha D, et al EULAR definition of erosive disease in light of the 2010 ACR/EULAR rheumatoid arthritis classification criteria. *Ann Rheum Dis* 2013;72:479–81.

## Supplement 1: Exclusion criteria for the tREACH trial

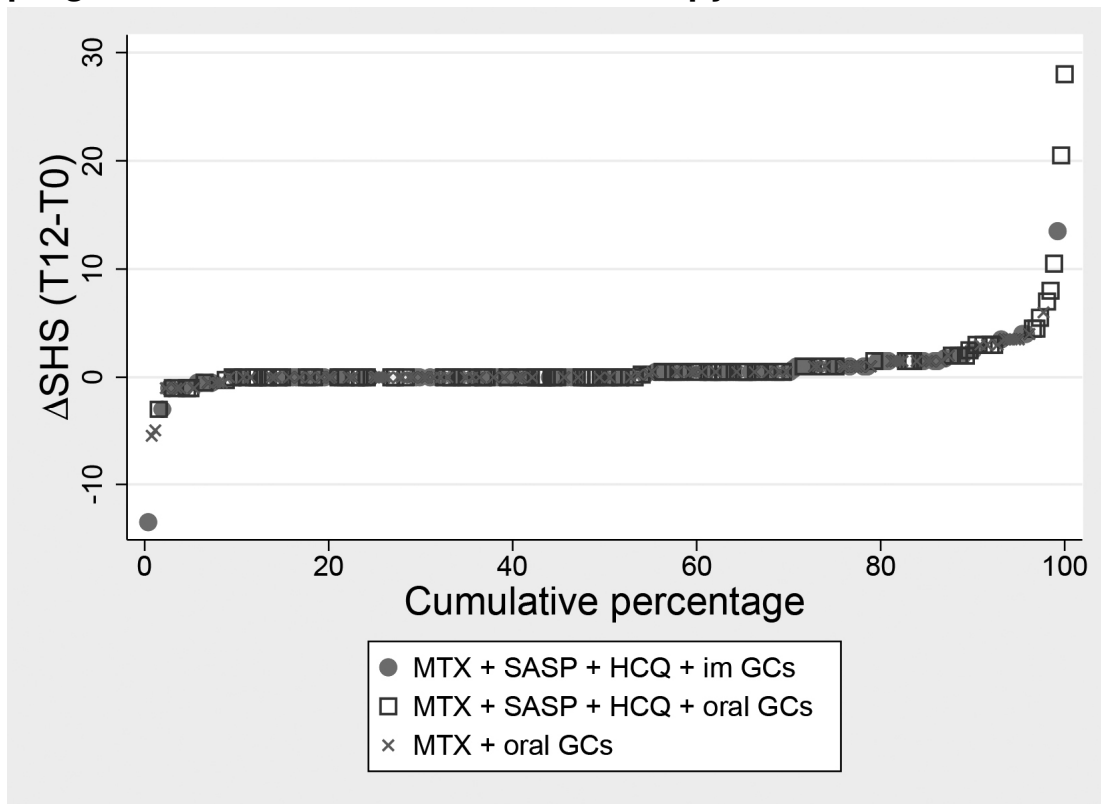
The tREACH exclusion criteria are:

1. Diagnosed with
  - a. a crystal arthropathy,
  - b. a (post-)infectious arthritis, or
  - c. an autoimmune disorder other than RA
2. Previous DMARD therapy or glucocorticoid usage
3. Contra-indications for initial study medication, namely:
  - a. chronic liver disease
  - b. excessive alcohol and drug use
  - c. pregnancy (wish)
  - d. leucopenia  $<3.0 \times 10^9/l$
  - e. thrombocytopenia  $<150 \times 10^9/l$
  - f. aspartate aminotransferase/ alanine aminotransferase more than two times the upper normal value
  - g. creatinine level  $>150 \mu\text{mol/l}$ .

## Supplement 2: EULAR response criteria

	Improvement in DAS from baseline		
DAS at endpoint	$>1.2$	$>0.6$ and $\leq 1.2$	$\leq 0.6$
$\leq 2.4$	Good	Moderate	None
$>2.4$ and $\leq 3.7$			
$>3.7$			

**Supplement 3: Cumulative probability plot for radiological progression stratified for induction therapy.**



Each point on the plot represents the radiographical progression in an individual patient (score after 1 year minus score at baseline). Abbreviations: GCs, glucocorticoids; HCQ, hydroxychloroquine; im, intramuscular; MTX, methotrexate; SASP, sulfasalazine; SHS, modified Sharp/Van der Heijde score.

## Supplement 4: DAS and its components over time per treatment arm.

	A. MTX + SASP + HCQ + im GCs	B. MTX + SASP + HCQ	C. MTX + oral GCs
<b>No. of patients</b>			
T0	91	93	97
T3	85	89	90
T6	81	86	88
T9	80	86	85
T12	77	84	87
<b>DAS</b>			
T0	3.28 (3.11 - 3.44)	3.40 (3.18 - 3.62)	3.39 (3.19 - 3.58)
T3	1.86 (1.65 - 2.06)	1.82 (1.64 - 2.00)	2.21 (1.99 - 2.43)
T6	1.74 (1.54 - 1.95)	1.80 (1.59 - 2.00)	2.01 (1.82 - 2.21)
T9	1.50 (1.33 - 1.67)	1.63 (1.44 - 1.81)	1.78 (1.59 - 1.97)
T12	1.40 (1.25 - 1.56)	1.61 (1.42 - 1.80)	1.68 (1.50 - 1.87)
<b>TJC44</b>			
T0	8 (4 - 14)	9 (5 - 15)	10 (4 - 14)
T3	1 (0 - 4)	1 (0 - 5)	3 (0 - 7)
T6	1 (0 - 4)	1 (0 - 7)	3 (0 - 6)
T9	0 (0 - 3)	0 (0 - 4)	1 (0 - 5)
T12	0 (0 - 2)	0 (0 - 4)	1 (0 - 4)
<b>SJC44</b>			
T0	8 (5 - 12)	7 (4 - 12)	7 (4 - 12)
T3	1 (0 - 3)	1 (0 - 3)	1 (0 - 4)
T6	1 (0 - 3)	1 (0 - 3)	1 (0 - 3)
T9	0 (0 - 2)	0 (0 - 2)	0 (0 - 2)
T12	0 (0 - 2)	0 (0 - 1)	0 (0 - 2)
<b>General health<sup>1</sup></b>			
T0	52 (34 - 70)	55 (29 - 69)	53 (38 - 70)
T3	24 (13 - 27)	26 (15 - 48)	39.5 (21 - 54)
T6	28 (15 - 42)	26 (11 - 44)	30 (16 - 51)
T9	18 (7 - 35)	25 (11 - 52)	23 (14 - 44)
T12	18 (8 - 32)	22,5 (9.5 - 37.5)	23 (10 - 40)
<b>ESR (mm/hr)</b>			
T0	27 (14 - 40)	22 (13 - 40)	24 (14 - 42)
T3	3 (1 - 5.2)	10 (5 - 21)	12.5 (7 - 22.5)
T6	11 (4 - 23)	9 (4 - 17)	10 (5 - 21)
T9	12 (5 - 21)	9 (5 - 20)	12 (5 - 18)
T12	11 (5 - 18)	10,5 (6.5 - 20.5)	12 (6 - 21)

Results shown are mean (95% confidence interval) for DAS and median (interquartile range) for its components.

<sup>1</sup>General health is measured with a visual analog scale from 0 - 100 mm.

## Supplement 5: Subgroup analyses for patients with RA according to 2010 ACR/EULAR criteria

**Table 1: Number of participants, with RA according to 2010 ACR/EULAR criteria, at each time-point, stratified for induction therapy.**

	T0	T3	T6	T9	T12
A. MTX + SASP + HCQ + im GCs	87	82	78	77	74
B. MTX + SASP + HCQ + oral GCs	88	84	81	81	80
C. MTX + oral GCs	95	88	86	84	85

**Table 2: Baseline characteristics of patients with RA according to 2010 ACR/EULAR criteria, stratified for induction therapy.**

	A. MTX + SASP + HCQ + im GCs (n=87)	B. MTX + SASP + HCQ + oral GCs (n=88)	C. MTX + oral GCs (n=95)
<b>Demographic</b>			
Age (yrs), mean (sd)	53 (15)	54 (14)	54 (14)
Sex, female, no(%)	52 (60)	63 (72)	67 (71)
<b>Disease characteristics</b>			
Symptom duration (days), mean (sd)*	160 (95)	183 (93)	151 (81)
RF pos., no(%)	68 (78)	64 (72)	65 (68)
ACPA pos., no(%)	72 (83)	66 (75)	75 (79)
<b>Disease activity</b>			
DAS, mean (sd)	3.34 (0.78)	3.44 (1.08)	3.40 (0.98)
DAS28, mean (sd)	4.86 (1.09)	4.88 (1.29)	4.79 (1.28)
TJC44, median (IQR)	8 (4 - 14)	9.5 (5 - 16)	10 (4 - 14)
SJC44, median (IQR)	8 (5 - 12)	8 (4 - 12)	7 (4 - 12)
VAS global (0 -100mm), median (IQR)	53 (37 - 70)	55 (29 - 69)	53 (37 - 70)
ESR in mm/hr, median (IQR)	27 (14 - 40)	22 (13 - 39.5)	24 (14 - 43)
CRP in mg/L, median (IQR)	8.5 (4 -23)	6.4 (3.75 - 19)	11 (5 - 26)
<b>Radiographs (hand/foot)</b>			
Total SHS (0 - 488 ), median (IQR)	0.5 (0 - 2)	0.5 (0 - 2)	1 (0 - 2.5)
Erosion score (0 - 280), median (IQR)	0 (0 - 1)	0 (0 - 1)	0.5 (0 - 1)
JSN score (0 - 168), median (IQR)	0 (0 - 1)	0 (0 - 1)	0 (0 - 1.5)
Erosive disease, no(%) <sup>1</sup>	9/87 (10)	6/88 (9)	8/93 (9)
<b>Patient-reported outcomes<sup>2</sup></b>			
HAQ, mean (sd)	0.98 (0.69) (n=80)	0.99 (0.63) (n=82)	1.06 (0.68) (n=90)
RADAI (0-10), mean (sd)	4.01 (1.85) (n=78)	4.02 (1.59) (n=78)	4.18 (1.83) (n=85)

<sup>1</sup>Erosive disease is defined as having an erosion score >1 in 3 separate joints

<sup>2</sup>Not everyone filled in a (complete) questionnaire and therefore n is different for HAQ and RADAI.

\*p=0.016 for B vs C.

**Table 3: Clinical response after 12 months for each induction therapy group in the subgroup of patients with RA according to 2010 criteria, intention-to-treat analysis.**

	A. MTX + SASP + HCQ + im GCs (n=74)	B. MTX + SASP + HCQ + oral GCs (n=80)	C. MTX + oral GCs (n=85)
<b>Disease activity</b>			
DAS, mean (sd)	1.40 (0.69)	1.62 (0.88)	1.67 (0.88)
ΔDAS (T12 - T0), mean (sd)	-1.89 (-1.00)	-1.77 (-1.16)	-1.72 (-1.28)
Disease state according to DAS, no(%)			
moderate to high disease activity ( $DAS \geq 2.4$ )	8 (11)	15 (19)	18 (21)
low disease activity ( $1.6 \leq DAS < 2.4$ )	20 (27)	23 (29)	24 (28)
remission ( $DAS < 1.6$ )	46 (62)	42 (53)	43 (51)
Boolean remission criteria, no(%) <sup>1</sup>	17 (23)	12(15)	14(17)
EULAR response criteria (T12 - T0), no(%) <sup>2</sup>			
good	54 (73)	50 (63)	56 (66)
Moderate	13 (18)	18 (23)	9 (11)
none	7 (9)	12 (15)	20 (24)
TJC44, median (IQR)	0 (0 - 2)	0 (0 - 4)	1 (0 - 4)
SJC44, median (IQR)*	0 (0 - 2)	0 (0 - 1)	0 (0 - 2)
VAS global (0 - 100mm), median (IQR)	18 (8 - 32)	22.5 (9.5 - 37.5)	23 (10 - 40)
ESR in mm/hr, median (IQR)	11 (5 - 18)	10.5 (6.5 - 20.5)	12 (6 - 21)
CRP in mg/L, median (IQR)	3 (1 - 5.2)	4 (1 - 7)	3 (1.9 - 5)
<b>Radiographs (hand/foot)</b>			
Total SHS (0 - 488 ), median (IQR)	1.25 (0 - 3)	1 (0 - 3)	1.5 (0 - 3.5)
Erosion score (0 - 280), median (IQR)	0.5 (0 - 1.25)	0.5 (0 - 1.5)	0.5 (0 - 1.5)
JSN score (0 - 168), median (IQR)	0.5 (0 - 1.5)	0 (0 - 1.5)	0.5 (0 - 2)
ΔTotal SHS (T12 - T0), median (IQR)	0.38 (0 - 1)	0 (0 - 1)	0 (0 - 1)
Patients with progression >0.5, no (%)	25/73 (34)	24/78 (31)	28/82 (34)
Patients with progression >1.2, no (%)	16/73 (22)	20/78 (26)	19/82 (23)
Erosive disease, no(%)	7/66 (11)	19/71 (17)	15/81 (19)
<b>Patient-reported outcomes<sup>4</sup></b>			
HAQ, mean (sd)	0.38 (0.46) (n=66)	0.52 (0.56) (n=74)	0.63 (0.57) (n=82)
ΔHAQ (T12 - T0), mean (sd)	-0.47 (-0.64) (n=62)	-0.43 (-0.59) (n=71)	-0.47 (-0.53) (n=80)
RADAI (0 - 10), mean (sd)	1.45 (1.24) (n=65)	1.83 (1.54) (n=71)	2.15 (1.82) (n=78)
ΔRADAI (T12 - T0), mean (sd)	-2.23 (-1.70) (n=61)	-2.07 (-1.89) (n=66)	-2.12 (-1.92) (n=73)

<sup>1</sup> Boolean remission criteria are defined as having a TJC44 ≤ 1, SJC44 ≤ 1, VAS global ≤ 10mm and CRP ≤ 10 mg/L

<sup>2</sup> EULAR response criteria are based on attained level and change in DAS

<sup>3</sup> Erosive disease is defined as having an erosion score >1 in 3 separate joints

<sup>4</sup> Not everyone filled in a (complete) questionnaire and therefore n is different for HAQ and RADAI.

\*p=0.044 for B vs C.

Abbreviations: CRP, C-reactive protein; DAS, Disease Activity Score; ESR, erythrocyte sedimentation rate; GCs, glucocorticoids; HAQ, Health Assessment Questionnaire; HCQ, hydroxychloroquine; im, intramuscular; IQR, interquartile range; JSN, joint space narrowing; MTX, methotrexate; RADAI, Rheumatoid Arthritis Disease Activity Index questionnaire; SASP, sulfasalazine; sd, standard deviation; SHS, modified Sharp/Van der Heijde score; SJC44, swollen joint count (44 joints); TJC44, tender joint count (44 joints); VAS, visual analogue scale.

**Table 4: Medication usage after 12 months and treatment alteration over time for each induction therapy group in the subgroup of patients with RA according to 2010 criteria.**

	A. MTX + SASP + HCQ + im GCs (n=87)	B. MTX + SASP + HCQ + oral GCs (n=88)	C. MTX + oral GCs (n=95)
<b>Medication after 12 months</b>			
MTX	69 (79)	68 (77)	80 (84)
MTX dosage, <i>median (IQR)</i>	15 (7.5 - 25)	15 (7.5 - 25)	20 (7.5 - 25)
SASP	25 (29)	25 (28)	2 (2)
HCQ	49 (56)	54 (61)	8 (8)
Biological use*	26 (30)	23 (26)	41 (43)
<i>Etanercept</i>	18 (21)	12 (14)	22 (23)
<i>Adalimumab</i> †	4 (5)	5 (6)	16 (17)
<i>Abatacept</i>	3 (3)	5 (6)	3 (3)
<i>Other</i> <sup>1</sup>	1 (1)	1 (1)	0 (0)
<b>Tapered treatment<sup>2</sup></b>			
Taperings‡	84/229 (37)	65/242 (27)	59/255 (23)
at 1 time-point	15 (18)	18 (20)	15 (16)
at 2 time-points	12 (13)	10 (8)	10 (10)
at 3 time-points	15 (16)	9 (11)	8 (8)
<b>Flare after tapering<sup>3</sup></b>	6/84 (7)	3/65 (5)	4/59 (7)

Results shown are a number (%) unless stated otherwise.

<sup>1</sup>Other biologicals are: Infliximab (A) and Rituximab (B)

<sup>2</sup>Treatment could be tapered after 6 months. Therefore the total amount of possible taperings is the sum of all assessments at the last three visits, per treatment arm.

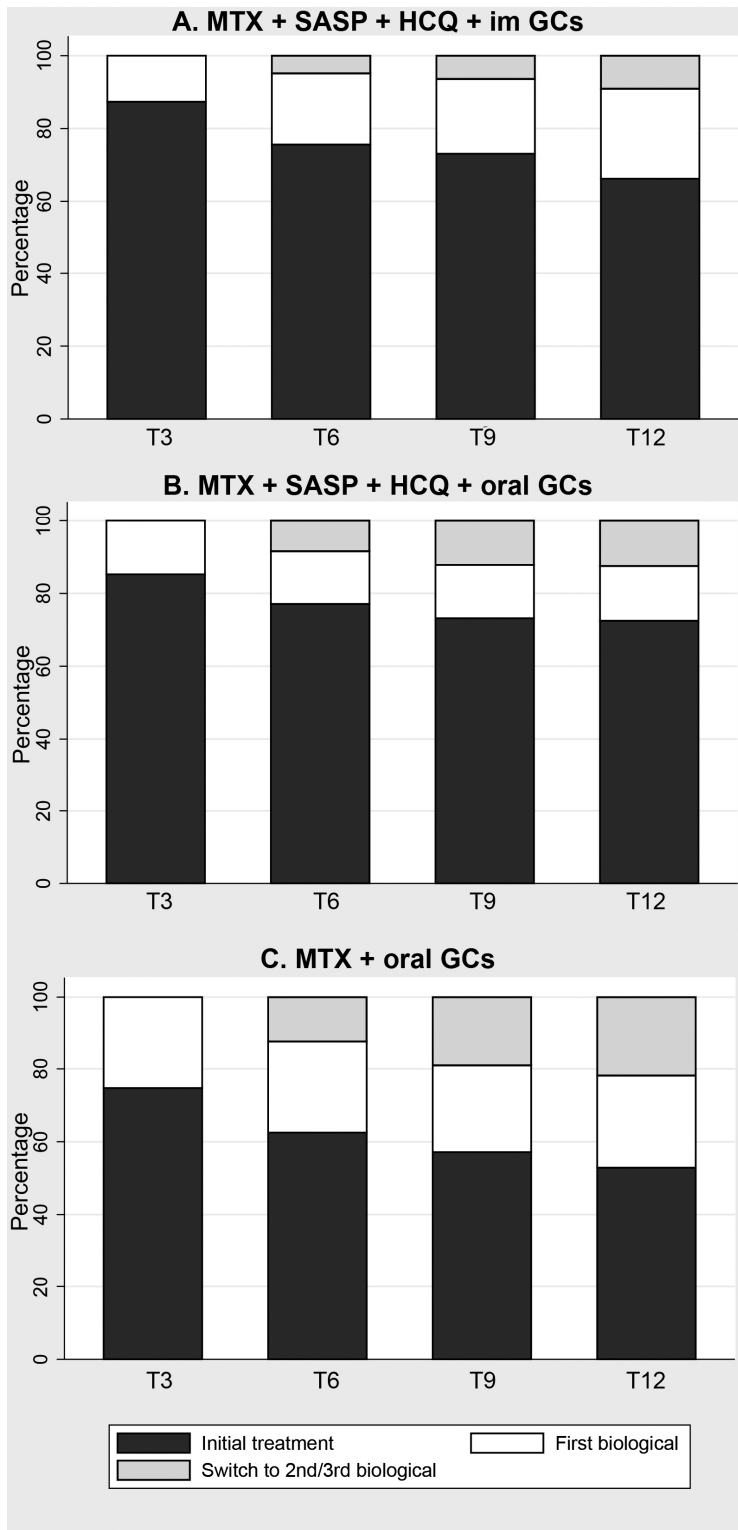
<sup>3</sup>A flare is defined as a DAS $\geq$ 2.4. The proportion is calculated by dividing the number of flares by the total amount of taperings

\*p=0.016 for B vs C.

†p=0.018 for B vs C

‡p=0.022 for A vs B

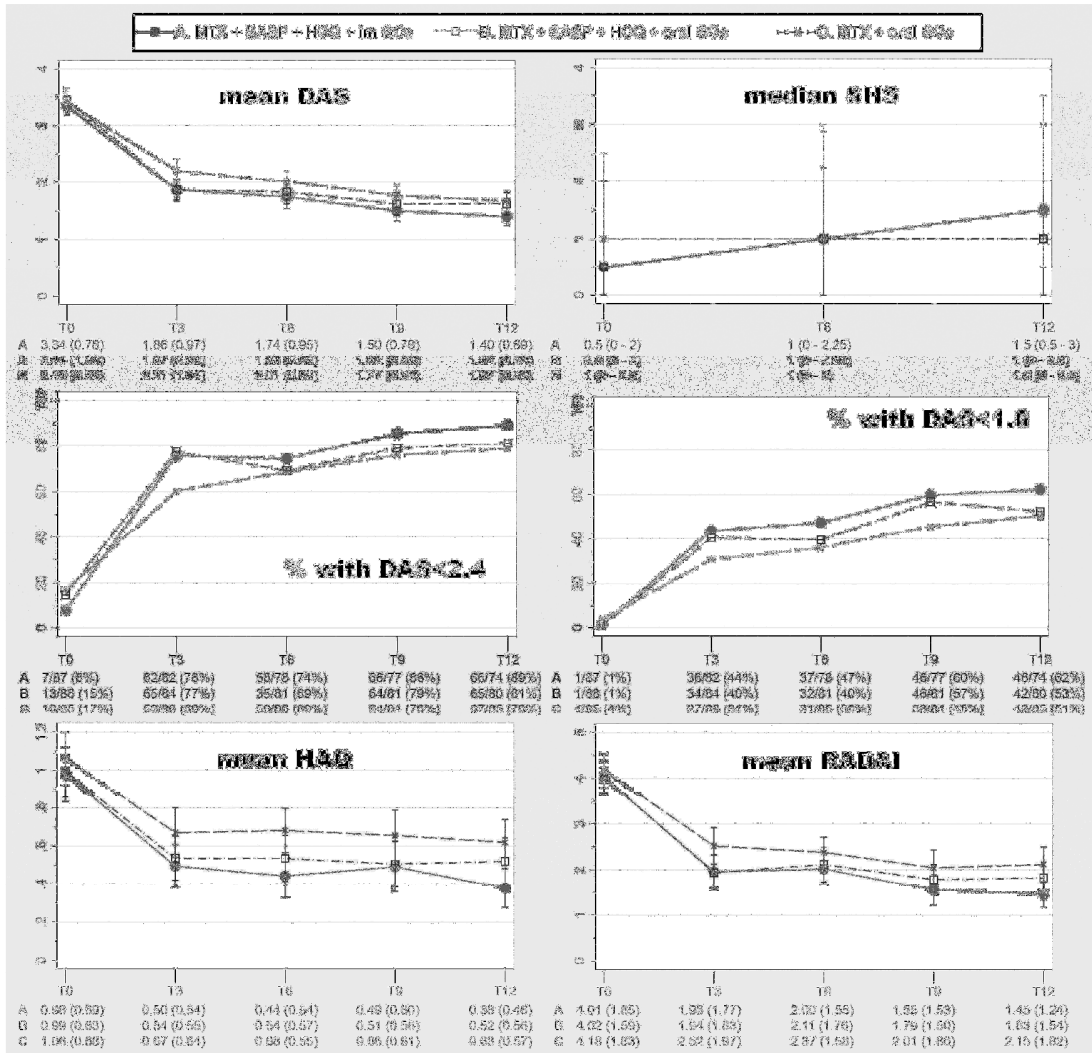
Abbreviations: GCs, glucocorticoids; HCQ, hydroxychloroquine; im, intramuscular; IQR, interquartile range; MTX, methotrexate; SASP, sulfasalazine.



**Figure 1: Medication usage over time, stratified for induction therapy in the subgroup of patients with RA according to 2010 criteria.**

Abbreviations: GCs, glucocorticoids; HCQ, hydroxychloroquine; im, intramuscular; MTX, methotrexate; SASP, sulfasalazine.





**Figure 2: (Self-assessed) disease activity, functional ability and radiographic joint damage over time, stratified for induction therapy in the subgroup of patients with RA according to 2010 criteria.**

Error bars indicate respectively 95% confidence intervals and interquartile range for given means and median.

	A. MTX + SASP + HCQ + im GCs	B. MTX + SASP + HCQ + oral GCs	C. MTX + oral GCs
<b>AUC</b>			
DAS	22.4 (7.3) (n=87)	23.5 (8.4) (n=88)	25.6 (8.4) (n=95)
HAQ	6.4 (5.0) (n=80)	7.0 (5.5) (n=82)	8.5 (5.9) (n=90)

Results shown are mean(SD)

## Supplement 6: Subgroup analyses for patients with RA according to 1987 ACR criteria

**Table 1: Number of participants, with RA according to 1987 ACR criteria, at each time-point, stratified for induction therapy.**

	T0	T3	T6	T9	T12
A. MTX + SASP + HCQ + im GCs	69	65	63	60	58
B. MTX + SASP + HCQ + oral GCs	57	55	52	53	52
C. MTX + oral GCs	63	59	57	55	56

**Table 2: Baseline characteristics of patients with RA according to 1987 ACR criteria, stratified for induction therapy.**

	A. MTX + SASP + HCQ + im GCs (n=69)	B. MTX + SASP + HCQ + oral GCs (n=57)	C. MTX + oral GCs (n=63)
<b>Demographic</b>			
Age (yrs), <i>mean (sd)</i>	54 (16)	55 (14)	55 (14)
Sex, female, <i>no(%)</i>	41 (59)	39 (68)	43 (68)
<b>Disease characteristics</b>			
Symptom duration (days), <i>mean (sd)</i>	160 (94)	174 (87)	146 (73)
RF pos., <i>no(%)</i>	55 (80)	47 (82)	45 (71)
ACPA pos., <i>no(%)</i>	56 (81)	40 (70)	49 (78)
<b>Disease activity</b>			
DAS, <i>mean (sd)</i>	3.43 (0.76)	3.56 (1.06)	3.57 (0.99)
DAS28, <i>mean (sd)</i>	5.04 (0.99)	5.13 (1.24)	5.03 (1.22)
TJC44, <i>median (IQR)</i>	9 (6 - 14)	10 (5 - 15)	10 (5 - 15)
SJC44, <i>median (IQR)</i>	9 (6 - 12)	11 (6 - 12)	9 (6 - 11)
VAS global (0 -100mm), <i>median (IQR)</i>	55 (37 - 69)	58 (31 - 71)	55 (35 - 70)
ESR in mm/hr, <i>median (IQR)</i>	28 (15 - 44)	24 (16 - 51)	25 (20 - 44)
CRP in mg/L, <i>median (IQR)</i>	9 (4 -24)	8 (4 - 24)	13 (5.6 - 31)
<b>Radiographs (hand/foot)</b>			
Total SHS (0 - 488 ), <i>median (IQR)</i>	1 (0 - 2.5)	1 (0 - 2.5)	1 (0 - 3)
Erosion score (0 - 280), <i>median (IQR)</i>	0.5 (0 - 1)	0.5 (0 - 1.5)	0.5 (0 - 1)
JSN score (0 - 168), <i>median (IQR)</i>	0 (0 - 1.5)	0 (0 - 1.5)	0.5 (0 - 1.5)
Erosive disease, <i>no(%)</i> <sup>1</sup>	9/69 (13)	5/57 (9)	7/62 (11)
<b>Patient-reported outcomes<sup>2</sup></b>			
HAQ, <i>mean (sd)</i>	1.05 (0.67) (n=64)	0.99 (0.64) (n=53)	1.10 (0.68) (n=60)
RADAI (0-10), <i>mean (sd)</i>	4.16 (1.86) (n=63)	4.13 (1.53) (n=51)	4.31 (1.98) (n=57)

<sup>1</sup>Erosive disease is defined as having an erosion score >1 in 3 separate joints

<sup>2</sup>Not everyone filled in a (complete) questionnaire and therefore n is different for HAQ and RADAI.

Abbreviations: ACPA, anti-citrullinated protein/peptide antibodies; CRP, C-reactive protein; DAS, Disease Activity Score; ESR, erythrocyte sedimentation rate; GCs, glucocorticoids; HAQ, Health Assessment Questionnaire; HCQ, hydroxychloroquine; im, intramuscular; IQR, interquartile range; JSN, joint space narrowing; MTX, methotrexate; RADAI, Rheumatoid Arthritis Disease Activity Index questionnaire; RF, rheumatoid factor; SASP, sulfasalazine; sd, standard deviation; SHS, modified Sharp/Van der Heijde score; SJC44, swollen joint count (44 joints); TJC44, tender joint count (44 joints); VAS, visual analogue scale.

**Table 3: Clinical response after 12 months for each induction therapy group in the subgroup of patients with RA according to 1987 criteria, intention-to-treat analysis.**

	A. MTX + SASP + HCQ + im GCs (n=58)	B. MTX + SASP + HCQ + oral GCs (n=52)	C. MTX + oral GCs (n=56)
<b>Disease activity</b>			
DAS, <i>mean (sd)</i>	1.41 (0.68)	1.64 (0.93)	1.64 (0.94)
$\Delta$ DAS (T12 - T0), <i>mean (sd)</i>	-1.97 (-1.00)	-1.93 (-1.22)	-1.92 (-1.26)
Disease state according to DAS, <i>no(%)</i>			
<i>moderate to high disease activity (DAS<math>\geq</math>2.4)</i>	6 (10)	9 (17)	12 (21)
<i>low disease activity (1.6<math>\geq</math>DAS&lt;2.4)</i>	17 (29)	15 (29)	16 (29)
<i>remission (DAS&lt;1.6)</i> <sup>1</sup>	35 (60)	28 (54)	28 (50)
Boolean remission criteria, <i>no(%)</i> <sup>1</sup>	16 (28)	10 (20)	12 (21)
EULAR response criteria (T12 - T0), <i>no(%)</i> <sup>2</sup>			
<i>Good</i>	43 (74)	33 (63)	40 (71)
<i>Moderate</i>	11 (19)	13 (25)	6 (11)
<i>None</i>	4 (7)	6 (12)	10 (18)
TJC44, <i>median (IQR)</i>	0 (0 - 2)	0 (0 - 4)	0 (0 - 4)
SJC44, <i>median (IQR)</i>	0 (0 - 2)	0 (0 - 2)	0 (0 - 2)
VAS global (0 - 100mm), <i>median (IQR)</i>	14 (7 - 30)	24.5 (9 - 38)	23 (8.5 - 42.5)
ESR in mm/hr, <i>median (IQR)</i>	12 (5 - 20)	13 (7 - 20.5)	14.5 (5 - 22)
CRP in mg/L, <i>median (IQR)</i>	3.1 (1 - 6)	3.1 (1 - 7)	3 (1.85 - 5.5)
<b>Radiographs (hand/foot)</b>			
Total SHS (0 - 488 ), <i>median (IQR)</i>	1.5 (0.5 - 3.75)	1.5 (0.5 - 5.5)	2 (0 - 4)
Erosion score (0 - 280), <i>median (IQR)</i>	0.5 (0 - 1.5)	1 (0 - 3)	0.5 (0 - 2)
JSN score (0 - 168), <i>median (IQR)</i>	0.5 (0 - 1.75)	0 (0 - 1.5)	0.63 (0 - 2.25)
$\Delta$ Total SHS (T12 - T0), <i>median (IQR)</i>	0.38 (0 - 1)	0.5 (0 - 2)	0 (0 - 1.5)
Patients with progression >0.5, <i>no (%)</i>	20/57 (35)	20/51 (39)	21/54 (39)
Patients with progression >1.2, <i>no (%)</i>	14/57 (25)	18/51 (35)	16/54 (30)
Erosive disease, <i>no(%)</i>	7/51 (14)	15/47 (32)	12/54 (22)
<b>Patient-reported outcomes<sup>3</sup></b>			
HAQ, <i>mean (sd)</i>	0.39 (0.49) (n=53)	0.56 (0.59) (n=49)	0.61 (0.61) (n=55)
$\Delta$ HAQ (T12 - T0), <i>mean (sd)</i>	-0.55 (-0.63) (n=50)	-0.44 (-0.65) (n=47)	-0.51 (-0.49) (n=54)
RADAI (0 - 10), <i>mean (sd)</i>	1.40 (1.20) (n=52)	1.89 (1.61) (n=48)	2.14 (1.96) (n=51)
$\Delta$ RADAI (T12 - T0), <i>mean (sd)</i>	-2.36 (-1.62) (n=49)	-2.12 (-2.01) (n=44)	-2.24 (-1.91) (n=49)

<sup>1</sup>Boolean remission criteria are defined as having a TJC44 $\leq$ 1, SJC44 $\leq$ 1, VAS global $\leq$ 10mm and CRP $\leq$ 10 mg/L

<sup>2</sup>EULAR response criteria are based on attained level and change in DAS

<sup>3</sup>Erosive disease is defined as having an erosion score >1 in 3 separate joints

<sup>4</sup>Not everyone filled in a (complete) questionnaire and therefore n is different for HAQ and RADAI.

Abbreviations: CRP, C-reactive protein; DAS, Disease Activity Score; ESR, erythrocyte sedimentation rate; GCs, glucocorticoids; HAQ, Health Assessment Questionnaire; HCQ, hydroxychloroquine; im, intramuscular; IQR, interquartile range; JSN, joint space narrowing; MTX, methotrexate; RADAI, Rheumatoid Arthritis Disease Activity Index questionnaire; SASP, sulfasalazine; sd, standard deviation; SHS, modified Sharp/Van der Heijde score; SJC44, swollen joint count (44 joints); TJC44, tender joint count (44 joints); VAS, visual analogue scale.

**Table 4: Medication usage after 12 months and treatment alteration over time for each induction therapy group in the subgroup of patients with RA according to 1987 criteria**

	A. MTX + SASP + HCQ + im GCs (n=69)	B. MTX + SASP + HCQ + oral GCs (n=57)	C. MTX + oral GCs (n=63)
<b>Medication after 12 months</b>			
MTX	56 (81)	48 (84)	53 (84)
MTX dosage, <i>median (IQR)</i>	15 (7.5 - 25)	20 (7.5 - 25)	20 (10 - 25)
SASP	22 (32)	17 (30)	2 (3)
HCQ	41 (59)	37 (65)	5 (8)
Biological use*	20 (29)	13 (23)	25 (40)
<i>Etanercept</i>	14 (20)	8 (14)	13 (21)
<i>Adalimumab</i> †	3 (4)	2 (4)	10 (16)
<i>Abatacept</i>	2 (3)	3 (6)	2 (3)
<i>Other</i> <sup>1</sup>	1 (1)	0 (0)	0 (0)
<b>Tapered treatment</b> <sup>2</sup>			
Taperings	64/181 (35)	49/157 (31)	46/168 (27)
at 1 time-point	10 (18)	11 (20)	14 (16)
at 2 time-points	9 (13)	7 (8)	7 (10)
at 3 time-points	12 (16)	8 (11)	6 (8)
<b>Flare after tapering</b> <sup>3</sup>	2/64 (3)	3/49 (6)	4/46 (9)

Results shown are a number(%) unless stated otherwise.

<sup>1</sup>Other biologicals are: Infliximab (A) and Rituximab (B)

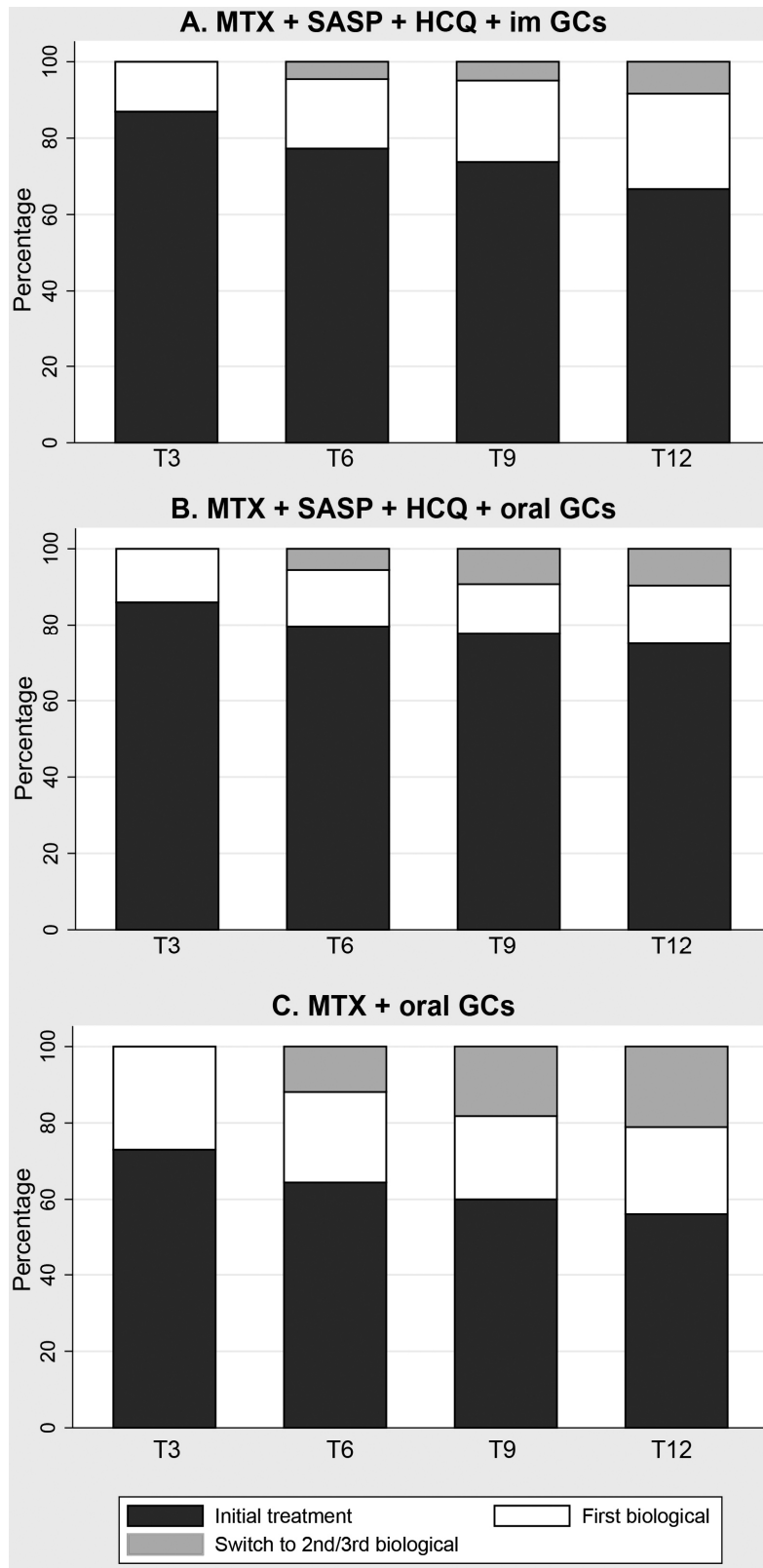
<sup>2</sup>Treatment could be tapered after 6 months. Therefore the total amount of possible taperings is the sum of all assessments at the last three visits, per treatment arm.

<sup>3</sup>A flare is defined as a DAS $\geq$ 2.4. The proportion is calculated by dividing the number of flares by the total amount of taperings

\*p=0.047 for B vs C.

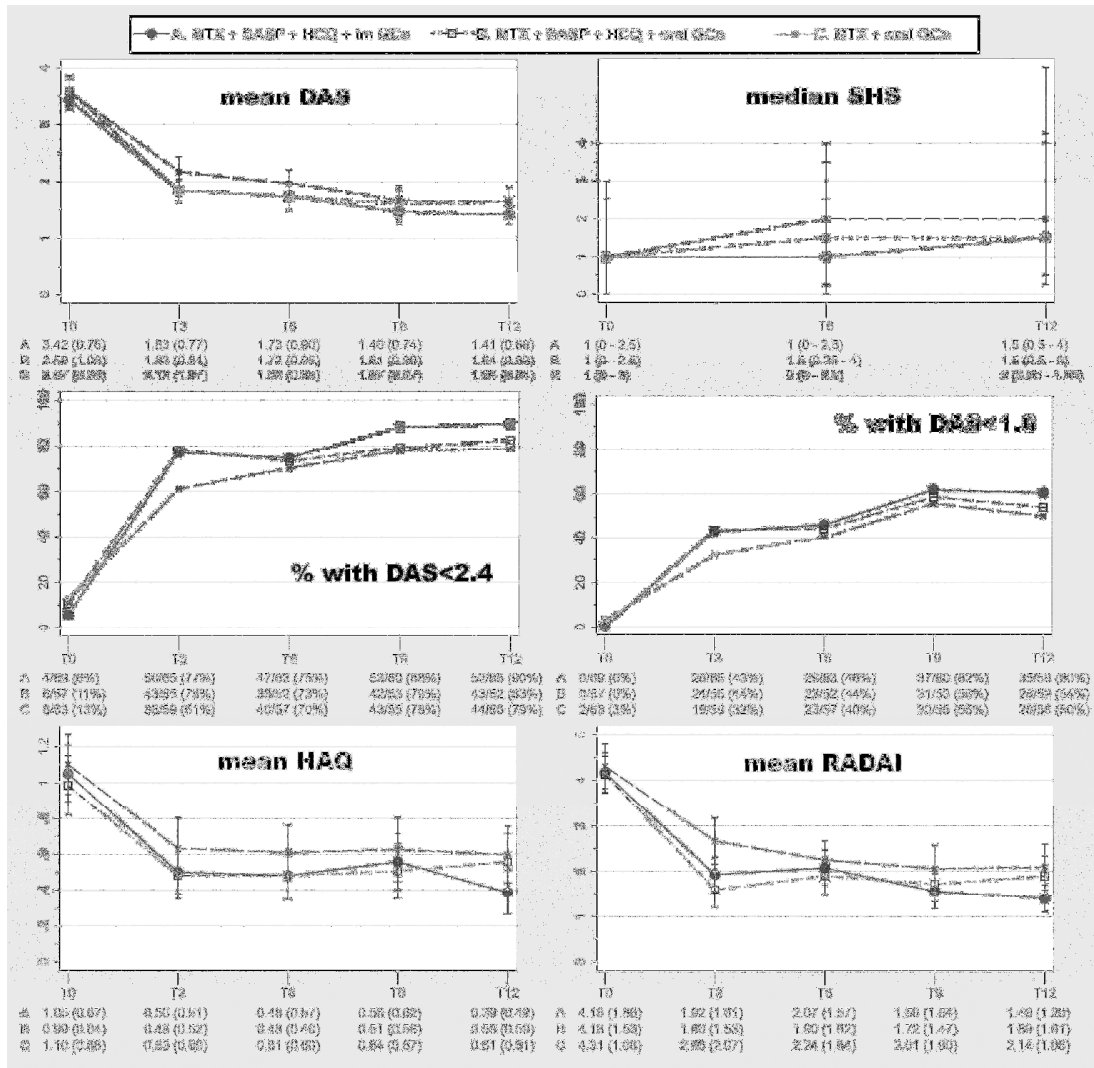
†p=0.024 for B vs C

Abbreviations: GCs, glucocorticoids; HCQ, hydroxychloroquine; im, intramuscular; IQR, interquartile range; MTX, methotrexate; SASP, sulfasalazine.



**Figure 1: Medication usage over time, stratified for induction therapy in the subgroup of patients with RA according to 1987 criteria.**

Abbreviations: GCs, glucocorticoids; HCQ, hydroxychloroquine; im, intramuscular; MTX, methotrexate; SASP, sulfasalazine.



**Figure 2: (Self-assessed) disease activity, functional ability and radiographic joint damage over time, stratified for induction therapy in the subgroup of patients with RA according to 1987 criteria.**

Error bars indicate respectively 95% confidence intervals and interquartile range for given means and median.

	A. MTX + SASP + HCQ + im GCs	B. MTX + SASP + HCQ + oral GCs	C. MTX + oral GCs
<b>AUC</b>			
DAS	22.3 (6.3) (n=69)	23.3 (8.3) (n=57)	25.3 (8.8) (n=63)
HAQ	6.8 (5.2) (n=64)	6.8 (5.3) (n=53)	8.4 (6.4) (n=60)

Results shown are mean(SD).