

Uptake and effectiveness of newer biologic and targeted synthetic disease-modifying antirheumatic drugs in psoriatic arthritis: results from five Nordic biologics registries

Bente Glintborg ^{1,2}, Daniela Di Giuseppe,³ Johan Karlsson Wallman ^{4,5}, Dan C Nordström,⁶ Bjorn Gudbjornsson,^{7,8} Merete Lund Hetland ^{1,2}, Johan Askling ⁹, Gerdur Grondal,^{8,10} Tuulikki Sokka ^{11,12}, Sella A Provan ¹³, Brigitte Michelsen,^{14,15} Eirik Klami Kristianslund,¹⁴ Lene Dreyer,^{16,17} Thorvardur Jon Love,¹⁸ Ulf Lindström ¹⁹

Handling editor Josef S Smolen

► Additional supplemental material is published online only. To view, please visit the journal online (<http://dx.doi.org/10.1136/ard-2022-223650>).

For numbered affiliations see end of article.

Correspondence to

Dr Bente Glintborg, DANBIO and Copenhagen Center for Arthritis Research (COPECARE), Center for Rheumatology and Spine Diseases, Centre of Head and Orthopedics, University Hospital of Copenhagen, Rigshospitalet, Copenhagen University Hospital Glostrup, Glostrup, Denmark; glintborg@dadlnet.dk

BGI and DDG contributed equally.

Accepted
Published Online First
22 February 2023



© Author(s) (or their employer(s)) 2023. No commercial re-use. See rights and permissions. Published by BMJ.

To cite: Glintborg B, Di Giuseppe D, Wallman JK, et al. *Ann Rheum Dis* 2023;**82**:820–828.

ABSTRACT

Background We aimed to describe the uptake of newer biologic or targeted synthetic disease-modifying antirheumatic drugs (b/tsDMARDs) in psoriatic arthritis (PsA) in the Nordic countries and to compare their retention and effectiveness.

Methods Patients with PsA starting a b/tsDMARD in 2012–2020 in five Nordic rheumatology registers were included. Uptake and patient characteristics were described, with comorbidities identified from linkages to national patient registries. One-year retention and 6-month effectiveness (proportions achieving low disease activity (LDA) on the Disease Activity Index for Psoriatic Arthritis based on 28-joint evaluation) for the newer b/tsDMARDs (abatacept/apremilast/ixekizumab/secukinumab/tofacitinib/ustekinumab) were compared with adalimumab through adjusted regression models stratified by treatment course (first, second/third, and fourth or more).

Results In total, 5659 treatment courses with adalimumab (56% biologic-naïve) and 4767 courses with a newer b/tsDMARD (21% biologic-naïve) were included. The uptake of newer b/tsDMARDs increased from 2014 and plateaued in 2018. Patient characteristics appeared similar across treatments at treatment start. Adalimumab was more often used as the first course and newer b/tsDMARDs more often in biologic-experienced patients. Used as a second/third b/tsDMARD, the retention rate and the proportion achieving LDA were significantly better for adalimumab (rate 65%, proportion 59%) compared with abatacept (45%, 37%), apremilast (43%, 35%), ixekizumab (LDA only, 40%) and ustekinumab (LDA only, 40%), but not significantly different from other b/tsDMARDs.

Conclusion Uptake of newer b/tsDMARDs occurred mainly in biologic-experienced patients. Regardless of mode of action, only a minority of patients starting a second or later b/tsDMARD course remained on drug and achieved LDA. Superior outcomes for adalimumab indicate that the positioning of newer b/tsDMARDs in the PsA treatment algorithm remains to be established.

WHAT IS ALREADY KNOWN ON THIS TOPIC

⇒ The increasing number of biologic and targeted synthetic disease-modifying antirheumatic drugs (b/tsDMARDs) available in psoriatic arthritis (PsA) warrants investigation of their effectiveness to establish optimal treatment strategies.

WHAT THIS STUDY ADDS

⇒ Uptake of newer b/tsDMARDs was fast in Nordic routine care, mainly in biologic-experienced patients.
⇒ Inferior outcomes for certain newer b/tsDMARDs versus adalimumab highlight unestablished position in the PsA treatment algorithm.

HOW THIS STUDY MIGHT AFFECT RESEARCH, PRACTICE OR POLICY

⇒ The overall low remission rates across treatments in biologic-experienced patients pinpoint the need for additional treatment alternatives, including non-pharmacologic interventions.

INTRODUCTION

The treatment landscape in psoriatic arthritis (PsA) is widening, with an increasing number of biologic and targeted synthetic disease-modifying antirheumatic drugs (b/tsDMARDs), with different modes of action, becoming available.^{1,2} However, the most effective treatment strategy in routine care, overall and by line of therapy, remains to be established.³

So far, comparative intervention studies in PsA across different modes of action have only been performed for adalimumab versus interleukin 17 inhibitors (IL-17i) and for adalimumab versus the janus kinase inhibitor (JAKi) upadacitinib.^{4–6} In two head-to-head trials, the IL-17is secukinumab and ixekizumab were respectively compared with adalimumab, with both studies suggesting equivalent effect of IL-17i and tumour necrosis factor inhibitors (TNFi) on arthritis, enthesitis and dactylitis,

but better effect of IL-17i on skin psoriasis.^{4,5} In a randomised controlled trial (RCT) for upadacitinib versus adalimumab, the currently approved dose for upadacitinib (15 mg daily) also showed a similar effect on arthritis as adalimumab, while the higher dose of 30 mg daily was superior.⁶ One RCT of the JAKi tofacitinib in PsA also included adalimumab as an active comparator, suggesting numerically similar effect sizes.⁷ Further, a substantial number of observational studies have attempted comparisons of effectiveness in routine care across several different drug classes.^{8–15} Within the Nordic countries, we have previously shown similar treatment retention and 6-month response in patients with PsA treated with secukinumab and adalimumab.¹⁶

In the absence of other intervention studies informing on comparative effectiveness of the different drug classes used in PsA, a number of meta-analyses have aimed at pooling data from RCTs, with the objective of either comparing or ranking efficacy.^{17–25} The results of these studies are not consistent, but several arrive at the conclusion that TNFi (infliximab, adalimumab and etanercept) and secukinumab may outperform apremilast, abatacept, ustekinumab and tofacitinib (and possibly ixekizumab) in terms of American College of Rheumatology (ACR) response rates,^{17–23} although others report no significant differences between abatacept, secukinumab, ustekinumab and apremilast.^{24,25} With these results in mind—and knowing that patients with PsA included in RCTs are not necessarily representative of patients with PsA in a clinical setting²⁶—it seems unlikely that further meta-analyses will provide a definitive answer as to how the different drugs should be positioned in the clinical treatment algorithm for PsA.

From an evidence-based perspective, it is not surprising that the 2019 EULAR (European Alliance of Associations for Rheumatology) recommendations adopted a cautious approach and refrained from ranking the TNFi, IL-17i or IL-12/23 inhibitors,²⁷ whereas abatacept, JAKi and apremilast were placed later in the treatment algorithm. For JAKi (at that time tofacitinib), the reason for this was a poorer effect on psoriasis, safety signals regarding adverse effects and less robust long-term data compared with the other treatment options. For apremilast and abatacept, use was only recommended in special cases, primarily due to lower efficacy in indirect comparisons.²⁷ Information on how to choose mode of action when treating an individual patient with PsA is thus still needed.

The aims of this study were to describe the uptake of newer, non-TNFi b/tsDMARDs (abatacept, apremilast, ixekizumab, secukinumab, tofacitinib and ustekinumab) in the Nordic countries and to directly compare treatment retention and response to these drugs with that of adalimumab. We used adalimumab as the comparator drug to facilitate comparison with the above-mentioned prior active comparator RCTs and head-to-head trials.

METHODS

Study design

This is an observational study of patients with PsA based on data collected prospectively in rheumatology registries and other healthcare registers of the Nordic countries.

Data sources

Information on treatment courses with b/tsDMARDs and on disease activity was collected from the rheumatology registers of the five Nordic countries: Denmark (register: DANBIO), Finland (ROB-FIN), Iceland (ICE-BIO), Norway (NOR-DMARD) and

Sweden (SRQ). Data from these registers were then enriched by linkage to other national registers to identify previous comorbidities and infections (treated in either inpatient or outpatient specialised care).

Case definition and exposures

All patients with a diagnosis of PsA (as registered in the rheumatology registry according to the treating physician) who started any approved b/tsDMARD between January 2012 and December 2020 (study period) were included. Each patient could contribute with several b/tsDMARD treatment courses. The start of the study period was set at 2012 because ustekinumab was approved for use in Europe in 2013. Registered interruptions in treatment of less than 3 months were disregarded and thus considered as ongoing treatment, as were switching between originator TNFi and their biosimilars.

Each registry extracted data on disease activity during the first year of treatment for each b/tsDMARD treatment course. Baseline data were captured within the time window –30 to +14 days from treatment initiation, and the 6-month follow-up visit from within 90 to 270 days thereafter. In case more than one visit occurred within a given time window, the one closest to the intended time point was selected.

Patients who had failed at least one TNFi due to inefficacy were identified based on information on previous treatment courses and reasons for treatment stop.

Patient characteristics

Patient characteristics at the start of an individual b/tsDMARD (baseline) were retrieved from the rheumatology registries and included gender, age, disease duration, disease activity, number of previous b/tsDMARD treatments and concomitant treatment with conventional synthetic (cs) DMARDs.

Disease activity was reported as C reactive protein (CRP, mg/L), patients' global health score on Visual Analogue Scale (VAS, 0–100 mm), patients' pain VAS score, Disease Activity Score based on 28-joint evaluation and Disease Activity Index for Psoriatic Arthritis based on 28-joint evaluation (DAPSA28).²⁸

Extra-musculoskeletal manifestations included previous uveitis and inflammatory bowel disease. Comorbidity score was calculated by summing up the number of different comorbidities registered 0–5 years prior to baseline, indicating overall comorbidity burden. Definitions are presented in online supplemental table S1. Not all countries were able to deliver comorbidity linkage data for the full observation period (Denmark until August 2018, Finland until December 2018, and Sweden, Iceland and Norway for the whole study period).

Outcomes

Uptake of newer b/tsDMARDs

Newer b/tsDMARDs were defined as abatacept, apremilast, guselkumab, ixekizumab, secukinumab, tofacitinib, upadacitinib and ustekinumab. Uptake and treatment patterns were described by numbers and baseline characteristics of patients starting each drug.

Due to the few registered treatment starts for guselkumab and upadacitinib during the study period ($n < 10$, respectively), further details for these drugs are not provided.

Treatment retention

The 1-year treatment retention was defined as the proportion remaining on the respective b/tsDMARD after 1 year. Censoring occurred at death or end of follow-up (defined for Sweden as

16 March 2022, for Denmark 31 December 2021, for Norway 11 May 2021, for Iceland 30 November 2021 and for Finland generally 15 March 2021, although a few Finnish centres had shorter follow-up).

Treatment response

Treatment response at 6 months after treatment start was described as the proportion achieving DAPSA28 low disease activity (LDA, ≤ 14) in patients remaining on treatment, with proportions achieving DAPSA28 remission (≤ 4) reported separately.²⁸ To simulate intention-to-treat analyses, the LDA and remission rates were moreover LUNDEX-corrected, thus incorporating the proportion still on treatment.²⁹

For treatment retention and response, results and comparisons for treatment starts in < 100 patients are not shown.

Statistics

Statistical analyses were performed in SAS V.9.4, while graphs were produced with Stata V.14 and Excel. Data from all countries were pooled for combined analyses. Because the newer b/tsDMARDs were expected to be used to a larger extent in patients previously treated with TNFi (opening for confounding by indication), all analyses were performed separately for the first b/tsDMARD course, second or third course, and fourth course or more.

Uptake

Patient characteristics on start of individual b/tsDMARDs are reported as percentages or means with SDs, as appropriate. Graphical presentations of the uptake over time are presented.

Retention

One-year retention was visualised through Kaplan-Meier analyses. Crude and adjusted HRs for discontinuation, using adalimumab as reference, were estimated through Cox regression analyses. Baseline adjustment factors were decided a priori and included age (and its quadratic term), sex, disease duration (categorised according to quartiles), concomitant csDMARD use (yes/no), CRP (quartiles), patient's global health (quartiles), start year (2012–2014, 2015–2017, 2018–2020), comorbidity score (0, 1, 2+) and history of infections in the previous 5 years (yes/no). For the second/third course, the exact treatment course (second or third) was added as adjustment factor. Country was added in the model as a stratification term by adding a strata statement in the SAS procedure. The assumption of proportional hazards was tested through Schoenfeld's residuals.

Response

Logistic regression was used to estimate the OR of attaining remission and LDA, adjusted for the same covariates as mentioned for Cox regression above, with adalimumab as reference, among patients with at least 6 months of follow-up.

Missing data

Multiple imputation with the fully conditional specification method was performed to account for missing baseline data, with 25 imputed data sets.³⁰ Two sets of imputed data sets were created: in the retention analyses, only the covariates CRP and patient's global health were imputed, while in the response analyses the outcome was also imputed. All variables included in the Cox and logistic models were also included in the respective imputations. Therefore, the crude proportions of patients

achieving LDA and remission are presented as the mean and range (minimum–maximum) of the values across imputations.

Throughout, comparative analyses across drugs were only performed if there were at least 100 patients in each treatment group, and for the Cox regression also at least 10 outcome events.

Sensitivity analyses

As a complement to the comparative analyses performed on the imputed data sets, complete case analyses were also performed for the logistic models. Further, the regression analyses were repeated for the subset of patients who had previously failed at least one TNFi due to inefficacy. Also, inverse probability of treatment-weighted (IPTW) Cox regression and logistic model were estimated as alternative ways to account for the confounding factors.

Patient and public involvement

Patient representatives were involved in the upstart and planning of this Nordic collaboration across registries, but no patients participated in the design of this specific study.

RESULTS

Treatment uptake and patient characteristics

In total, 12 792 patients with PsA were identified, contributing 16 976 treatment courses with any TNFi (whereof 5659 were adalimumab, which was used as comparator drug) and 4767 courses with a newer b/tsDMARD in 2012–2020 (table 1). Country-specific distributions are shown in online supplemental table S2. Figure 1A presents the uptake of newer b/tsDMARDs as the number of new starts per month, and figure 1B the number of new starts of all TNFis versus the newer b/tsDMARDs combined (in both figures irrespective of treatment course).

Overall, there was a rapid increase in the number of patients starting a newer b/tsDMARD from 2014 and onwards, plateauing in 2018, while the number of TNFi new starts remained unchanged over the period. The increased use of newer b/tsDMARDs was initially driven by ustekinumab, followed by apremilast, secukinumab, tofacitinib and ixekizumab, as they became available for use. Throughout there were steady low rates of abatacept starts. During the last 3 months of the study period, there were on average 161 new TNFi starts per month, 43 IL-17i (approximately equal numbers of secukinumab and ixekizumab), 13 tofacitinib, and < 10 for apremilast, abatacept and ustekinumab.

The baseline characteristics of patients treated with any TNFi, adalimumab and the newer b/tsDMARDs are shown in table 1, with additional data on comorbidities and distribution across countries in online supplemental table S2 and the proportion of missing data in online supplemental table S3.

During the study period, 10% of the first course of b/tsDMARDs were newer b/tsDMARDs, and for the second/third course and for the fourth course or more these percentages were 25% and 53%, respectively. For first course treatments, apremilast was the most frequently used newer b/tsDMARD, mainly in Swedish and to some extent Finnish patients (table 1). Second/third course newer b/tsDMARDs were mainly secukinumab, but also ustekinumab and apremilast, again mainly in Swedish patients. For the fourth course or more, a similar pattern was seen (as in second/third course), but with tofacitinib also used. For all treatment courses, use of newer b/tsDMARDs other than secukinumab was minimal in Norway and Iceland.

Table 1 Baseline characteristics of patients starting any TNFi, adalimumab or a newer b/tsDMARD, presented by course of b/tsDMARD treatment

First course	Any TNFi*	Adalimumab	Abatacept	Apremilast	Ixekizumab	Secukinumab	Tofacitinib	Ustekinumab
n	9269	3181	26	500	42	266	47	128
Age, years	49 (13)	49 (14)	57 (12)	53 (13)	50 (14)	50 (14)	50 (14)	46 (13)
Sex, male, n (%)	4338 (47)	1532 (48)	5 (19)	234 (47)	24 (57)	125 (47)	17 (36)	55 (43)
Year of start								
2012–2014	2840 (31)	772 (24)	8 (31)	0 (0)	0 (0)	0 (0)	0 (0)	35 (27)
2015–2017	2985 (32)	505 (16)	6 (23)	286 (57)	3 (7)	125 (47)	0 (0)	61 (48)
2018–2020	3444 (37)	1904 (60)	12 (46)	214 (43)	39 (93)	141 (53)	47 (100)	32 (25)
Disease duration, years	5.64 (7.4)	5.5 (7.5)	4.3 (5.0)	6.6 (7.6)	6.6 (9.1)	5.9 (7.5)	6.7 (7.5)	4.9 (9.7)
Number of previous b/tsDMARDs	0 (0)	0 (0)	0 (0)	0 (0)	0 (0)	0 (0)	0 (0)	0 (0)
Patient pain, mmt	57 (24)	56 (24)	59 (23)	58 (22)	31 (27)	58 (24)	52 (28)	48 (26)
Patient global health, mmt	58 (24)	57 (25)	58 (24)	57 (23)	30 (29)	58 (24)	54 (31)	47 (28)
Swollen joint count 28	3 (3)	3 (3)	3 (5)	2 (3)	1 (2)	3 (4)	3 (3)	3 (5)
Tender joint count 28	5 (5)	5 (5)	8 (8)	5 (6)	3 (3)	5 (6)	5 (4)	5 (6)
CRP, mg/L	10.4 (17.7)	9.8 (18.4)	12.5 (21.0)	9.4 (16.0)	4.5 (5.7)	10.9 (16.3)	10.1 (10.2)	11.5 (19.6)
DAS28	3.95 (1.3)	3.9 (1.3)	4.2 (1.6)	3.9 (1.4)	2.9 (1.3)	4.0 (1.4)	4.0 (1.2)	3.7 (1.8)
DAPSA28	25.43 (14.3)	24.7 (14.0)	30.9 (20.4)	24.9 (14.9)	13.2 (10.1)	26.5 (18.0)	26.0 (12.5)	25.5 (21.7)
Previous infection, n (%)‡	1900 (21)	583 (18)	8 (31)	129 (26)	7 (17)	74 (28)	9 (19)	31 (24)
Comorbidity score, n (%)§								
0	8041 (87)	2829 (90)	17 (65)	379 (76)	36 (86)	205 (77)	38 (81)	112 (88)
1	1002 (11)	293 (9)	7 (27)	91 (18)	4 (10)	49 (18)	7 (15)	13 (10)
≥2	226 (2)	59 (2)	2 (8)	30 (6)	2 (5)	12 (5)	2 (4)	3 (2)
Second/third course								
n	6161	2080	132	272	157	966	185	295
Age, years	50 (13)	51 (13)	53 (12)	54 (12)	51 (13)	51 (12)	54 (13)	50 (12)
Sex, male, n (%)	2520 (41)	895 (43)	53 (40)	97 (36)	65 (41)	406 (42)	62 (34)	113 (38)
Year of start								
2012–2014	2008 (33)	565 (27)	48 (36)	0 (0)	0 (0)	0 (0)	0 (0)	66 (22)
2015–2017	2051 (33)	450 (22)	29 (22)	179 (66)	4 (3)	394 (41)	0 (0)	159 (54)
2018–2020	2102 (34)	1065 (51)	55 (42)	93 (34)	153 (98)	572 (59)	185 (100)	70 (24)
Disease duration, years	8.48 (8.3)	8.5 (8.4)	7.2 (6.7)	8.8 (8.2)	8.1 (7.2)	8.6 (9.0)	9.4 (10.0)	8.7 (8.3)
Number of previous b/tsDMARDs	1 (0)	1 (0)	2 (0)	1 (0)	1 (0)	2 (1)	2 (1)	2 (0)
Previous failure of a TNFi due to inefficacy, n (%)	3059 (50)	1040 (50)	69 (52)	114 (42)	83 (53)	588 (61)	98 (53)	161 (55)
Patient pain, mmt	58 (25)	57 (25)	59 (24)	64 (23)	65 (22)	61 (25)	62 (22)	65 (22)
Patient global health, mmt	60 (25)	58 (26)	63 (23)	63 (23)	71 (22)	63 (25)	61 (25)	67 (23)
Swollen joint count 28	2 (3)	2 (3)	3 (4)	2 (3)	3 (3)	2 (3)	3 (3)	2 (3)
Tender joint count 28	5 (6)	5 (6)	7 (6)	6 (6)	7 (5)	5 (6)	6 (5)	6 (6)
CRP, mg/L	9.45 (17.8)	8.9 (15.9)	12.5 (17.8)	8.7 (15.7)	7.3 (9.8)	8.8 (15.3)	10.3 (14.0)	12.8 (21.8)
DAS28	3.85 (1.3)	3.8 (1.4)	4.4 (1.3)	4.1 (1.3)	4.3 (1.1)	3.9 (1.4)	4.1 (1.4)	4.0 (1.3)
DAPSA28	24.94 (15.2)	24.3 (15.4)	29.9 (16.8)	27.6 (13.4)	29.7 (13.7)	25.5 (14.9)	27.3 (14.8)	26.2 (15.1)
Previous infection†	1607 (26)	549 (26)	51 (39)	96 (35)	27 (17)	246 (25)	52 (28)	97 (33)
Comorbidity score, n (%)§								
0	5128 (83)	1708 (82)	97 (74)	198 (73)	130 (83)	782 (81)	131 (71)	232 (79)
1	832 (14)	305 (15)	29 (22)	55 (20)	25 (16)	139 (14)	42 (23)	55 (19)
≥2	201 (3)	67 (3)	6 (5)	19 (7)	2 (1)	45 (5)	12 (7)	8 (3)
Fourth course or more								
n	1546	398	142	177	162	719	274	277
Age, years	51 (12)	52 (12)	54 (13)	53 (10)	53 (12)	53 (12)	53 (12)	52 (12)
Sex, male, n (%)	567 (37)	157 (39)	37 (26)	64 (36)	48 (30)	246 (34)	84 (31)	88 (32)
Year of start								
2012–2014	417 (27)	60 (15)	36 (25)	0 (0)	0 (0)	0 (0)	0 (0)	69 (25)
2015–2017	538 (35)	111 (28)	27 (19)	113 (64)	3 (2)	383 (53)	7 (3)	128 (46)
2018–2020	591 (38)	227 (57)	79 (56)	64 (36)	159 (98)	336 (47)	267 (97)	80 (29)
Disease duration, years	12.0 (9.6)	11.3 (9.6)	11.9 (8.4)	10.3 (8.4)	12.7 (8.6)	12.0 (9.4)	13.2 (10.0)	11.0 (9.0)
Number of previous b/tsDMARDs	4 (1)	4 (1)	5 (2)	4 (2)	5 (2)	4 (1)	5 (2)	4 (1)
Previous failure of a TNFi due to inefficacy, n (%)	1253 (81)	318 (80)	103 (73)	144 (81)	142 (88)	605 (84)	229 (84)	213 (77)
Patient pain, mmt	65 (24)	65 (23)	67 (18)	65 (23)	67 (25)	67 (22)	69 (22)	64 (22)

Continued

Table 1 Continued

First course	Any TNFi*	Adalimumab	Abatacept	Apremilast	Ixekizumab	Secukinumab	Tofacitinib	Ustekinumab
Patient global health, mmt†	67 (24)	68 (23)	70 (19)	66 (23)	69 (25)	69 (22)	71 (22)	66 (23)
Swollen joint count 28	3 (3)	3 (4)	4 (4)	3 (3)	3 (3)	3 (4)	3 (4)	3 (4)
Tender joint count 28	6 (6)	6 (6)	8 (6)	7 (6)	6 (6)	6 (6)	8 (7)	6 (5)
CRP, mg/L	13.4 (21.9)	10.8 (14.3)	17.2 (26.8)	9.5 (16.1)	12.3 (21.0)	14.4 (23.5)	15.5 (22.6)	15.1 (22.2)
DAS28	4.2 (1.3)	4.2 (1.4)	4.8 (1.3)	4.4 (1.2)	4.3 (1.1)	4.4 (1.3)	4.8 (1.3)	4.5 (1.2)
DAPSA28	28.4 (15.8)	27.6 (16.5)	35.3 (17.1)	30.9 (15.0)	30.0 (14.4)	29.9 (15.6)	34.4 (17.6)	29.8 (13.3)
Previous infection, n (%)‡	495 (32)	119 (30)	60 (42)	77 (44)	50 (31)	253 (35)	119 (43)	93 (34)
Comorbidity score, n (%)§								
0	1228 (79)	322 (81)	103 (73)	132 (75)	133 (82)	555 (77)	202 (74)	212 (77)
1	263 (17)	61 (15)	33 (23)	30 (17)	24 (15)	126 (18)	52 (19)	56 (20)
≥2	55 (4)	15 (4)	6 (4)	15 (8)	5 (3)	38 (5)	20 (7)	9 (3)

Numbers are mean (SD) unless otherwise stated.

*Combined for adalimumab, certolizumab pegol, etanercept, golimumab and infliximab.

†Patient pain and patient global health measures on a 0–100 Visual Analogue Scale.

‡Treated in inpatient or outpatient specialised care 0–5 years before baseline.

§The comorbidity score is the sum of different types of comorbidities for each patient, registered in 0–5 years before baseline; see online supplemental table S1 for definitions.

For frequencies of individual comorbidities, see online supplemental table S3.

b/tsDMARDs, biologic and targeted synthetic disease-modifying antirheumatic drugs; CRP, C reactive protein; DAPSA28, Disease Activity index for Psoriatic Arthritis based on 28-joint evaluation; DAS28, Disease Activity Score based on 28-joint evaluation; TNFi, tumour necrosis factor inhibitor.

Baseline characteristics (demographics, disease activity, previous comorbidities) appeared largely similar across treatments for all treatment courses (table 1). Differences were mainly observed in the first course b/tsDMARDs, which might be explained by relatively low numbers for some treatments. For extra-musculoskeletal manifestations, the numbers were low, but previous uveitis seemed slightly more prevalent for adalimumab.

Among patients starting a second b/tsDMARD course, 32% of newer b/tsDMARD treatment initiators (n=995) had previously failed adalimumab (data available for 82% of patients), while for the third course the corresponding figure was 52%.

Treatment retention

For first course treatments, the crude 1-year retention rates across b/tsDMARDs ranged from 58% to 83% (not evaluated for abatacept, ixekizumab and tofacitinib due to few treatment starts), for the second/third course from 43% to 68%, and for the fourth course or more from 35% to 65% (figure 2). The crude 1-year retention was poorer for abatacept and apremilast, compared with adalimumab, in all assessed treatment cohorts, and in the fourth course or more this was also seen for ustekinumab.

The adjusted HRs for discontinuation confirmed this pattern, although when used as first course b/tsDMARD ustekinumab

moreover had a significantly lower hazard of discontinuation compared with adalimumab. The assumption of proportional hazards was valid in the model for first course treatments, but not in the other two models (violated by abatacept, secukinumab and ustekinumab). The crude Kaplan-Meier curves and the Cox models split at 6 months of follow-up (to handle the non-proportionality) are presented in online supplemental figure S1 and online supplemental table S4. These analyses suggested higher risk of discontinuation for abatacept and ustekinumab

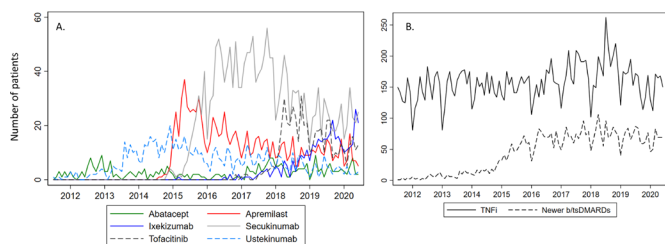


Figure 1 Number of b/tsDMARD treatment starts per month in 2012–2020. (A) Number of newer b/tsDMARD starts. (B) Number of combined TNFi and combined newer b/tsDMARDs. TNFi includes adalimumab, certolizumab pegol, etanercept, golimumab and infliximab. b/tsDMARDs, biologic and targeted synthetic disease-modifying antirheumatic drugs; TNFi, tumour necrosis factor inhibitor.

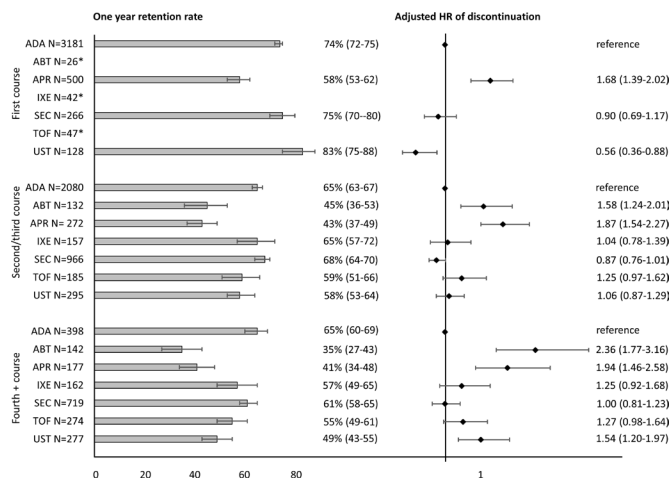


Figure 2 Retention rate and treatment discontinuation at 1-year follow-up. Results of multivariable Cox regression analyses presented by b/tsDMARD treatment course. *HR not estimated for groups with <100 patients. The error bars for retention and HR represent 95% CI. HRs were adjusted for age (and the quadratic term), sex, disease duration, csDMARD use, C reactive protein, patient’s global health score, treatment start year, comorbidity score and previous infection. ABT, abatacept; ADA, adalimumab; APR, apremilast; b/tsDMARDs, biologic and targeted synthetic disease-modifying antirheumatic drugs; csDMARD, conventional synthetic disease-modifying antirheumatic drug; IXE, ixekizumab; SEC, secukinumab; TOF, tofacitinib; UST, ustekinumab.

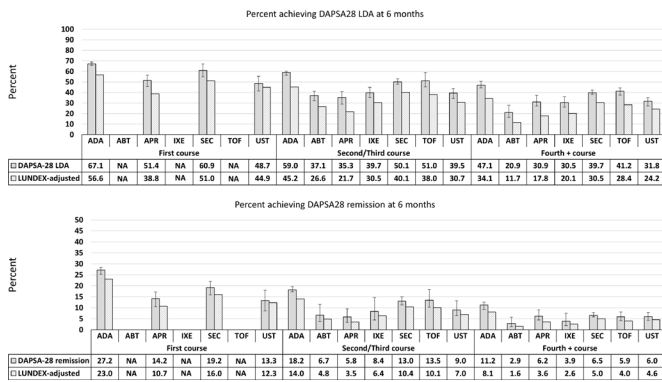


Figure 3 Proportion of patients achieving DAPSA28 LDA (≤ 14) or remission (≤ 4) at 6 months, crude and LUNDEX-corrected, presented by treatment course. Results including imputation of missing data; vertical lines illustrate range (minimum–maximum) across the 25 imputations. Not estimated for groups with < 100 patients (not available (NA)). ABT, abatacept; ADA, adalimumab; APR, apremilast; DAPSA28, Disease Activity index for Psoriatic Arthritis based on 28-joint evaluation; IXE, ixekizumab; LDA, low disease activity; SEC, secukinumab; TOF, tofacitinib; UST, ustekinumab.

in the 6-month to 12-month period, as compared with adalimumab, although not statistically significant.

Treatment response

Of the 10426 compared treatment courses (adalimumab or newer b/tsDMARD), 10388 had at least 6 months of follow-up and could be included in the response analyses.

Figure 3 shows the percentages achieving DAPSA28 LDA or remission, together with the corresponding LUNDEX-corrected proportions, presented by course of treatment. Adalimumab had a higher proportion achieving LDA and remission across all treatment courses, compared with abatacept, apremilast and ustekinumab.

The adjusted ORs for achieving LDA and remission are presented in table 2. For abatacept, apremilast and ustekinumab, the odds of achieving LDA were lower than for adalimumab in all analysed treatment cohorts (could not be calculated for the first course abatacept due to too few treated patients), and for ixekizumab also in the second/third cohort and the fourth or more cohort. For secukinumab and tofacitinib, no statistically significant differences versus adalimumab were found in the achievement of LDA.

Sensitivity analyses

A comparison of the proportion of patients achieving LDA and remission in the imputed data and in the complete case analyses (online supplemental figure S2) showed similar results. The corresponding complete case analyses are shown in online supplemental table S5.

In the subset of patients who had previously failed at least one TNFi due to inefficacy, we found similar estimates for risk of discontinuation (Cox regression analyses) and treatment response (logistic regression) as in the main analyses (online supplemental table S6).

Using an IPTW approach to adjust for confounding factors resulted in similar estimates as the main analyses (table 2 and online supplemental table S4), with the exception of the HR for discontinuation not indicating superiority for ustekinumab compared with adalimumab when used as the first course, and

suggesting higher discontinuation for tofacitinib than adalimumab when used as the fourth course or more.

DISCUSSION

In this study of patients with PsA from five Nordic countries, the number of new starts of any TNFi and the uptake of newer b/tsDMARDs levelled out from 2018, and the newer b/tsDMARDs were mainly used in b/tsDMARD-experienced patients. Our results showed differences in outcomes across the treatment options, where abatacept and apremilast seemed to have inferior effectiveness compared with adalimumab, while ixekizumab, secukinumab and tofacitinib performed similar to adalimumab, and ustekinumab somewhere in between. Similar results were found in the subgroup of patients who previously failed a TNFi due to inefficacy. Based on the LUNDEX-corrected rates, the numbers needed to treat (NNT) in second/third courses for one patient to achieve LDA at 6 months were two for adalimumab and three for secukinumab, ixekizumab, tofacitinib and ustekinumab, but five and four for apremilast and abatacept, respectively.

Numerous signalling patterns are modifiable in the complex and multifaceted disease entity of PsA. This has resulted in an increasing number of treatments available for the routine care treatment of PsA. Thus, treatment algorithms and suggestions of which treatment to use in which patient are of utmost interest. However, so far only three RCTs have reported direct comparisons across modes of action in PsA (adalimumab vs secukinumab,⁴ vs ixekizumab⁵ and vs upadacitinib⁶). The results of the present study are in line with the head-to-head comparison between adalimumab and secukinumab, indicating no significant differences regarding response to arthritis. However, our findings of poorer response outcomes for ixekizumab than for adalimumab are in contrast to the head-to-head trial. Several previous meta-analyses have also attempted comparisons across different drugs in PsA, some of which find results in line with ours. For example, one meta-analysis including TNFi, apremilast, ustekinumab and secukinumab reported better ACR20/50/70 week 24 responses for adalimumab compared with the non-TNFi treatments, as well as higher Psoriasis Area Severity Index (PASI) 75/90 responses.¹⁹ However, several of these analyses were funded by competing pharmaceutical companies, warranting some caution when interpreting the results.^{17–19 31}

In our study, 17.7% of patients received treatment with four or more b/tsDMARDs. The retention and corresponding LUNDEX-corrected response rates were remarkably low for these fourth or more b/tsDMARD treatment courses. This resulted in high NNT (1.6%–8.1% reaching DAPSA28 LUNDEX-corrected remission, with corresponding NNTs of 63 and 12) and adds to the discussion on the value of switching between multiple anti-rheumatic medications. Recent points to consider within rheumatoid arthritis address the importance of investigating residual inflammatory activity in case of multiple treatment failures, and to approach factors such as depression, lifestyle or coping.^{32–34} Although no definition of difficult-to-treat PsA exists, the same type of multimodal approach is likely important here, since previous studies have indicated fibromyalgia, high body mass index and comorbidities contribute to multiple treatment failures in PsA.^{35–37} Indeed, our study emphasises that some patients seem to cycle several b/tsDMARDs with apparently minimal effects. However, prediction analyses of the factors associated with difficult-to-treat disease were beyond the scope of this study.

Table 2 DAPSA28 LDA (≤ 14) or remission (≤ 4) at 6 months with OR and presented by treatment course: results of multivariable logistic regression analyses

First course	Adalimumab	Abatacept	Apremilast	Ixekizumab	Secukinumab	Tofacitinib	Ustekinumab
LDA, n	1880 (1838–1933)/3171	6 (4–9)/25	208 (183–229)/500	19 (15–24)/41	143 (132–158)/264	27 (20–32)/47	59 (50–68)/128
OR crude	Reference	–	0.49 (0.38–0.63)	–	0.81 (0.59–1.11)	–	0.59 (0.37–0.96)
OR age/sex-adjusted	Reference	–	0.50 (0.39–0.65)	–	0.82 (0.60–1.14)	–	0.59 (0.36–0.96)
OR fully adjusted	Reference	–	0.49 (0.37–0.66)	–	0.85 (0.60–1.19)	–	0.58 (0.35–0.97)
OR IPTW			0.52 (0.39–0.70)		0.89 (0.67–1.17)		0.62 (0.42–0.92)
Remission, n	792 (736–829)/3171	1 (0–2)/25	58 (41–75)/500	6 (1–11)/41	46 (40–51)/264	15 (11–17)/47	16 (10–22)/128
OR crude	Reference	–	0.38 (0.24–0.58)	–	0.63 (0.43–0.91)	–	0.42 (0.19–0.92)
OR age/sex-adjusted	Reference	–	0.41 (0.26–0.64)	–	0.65 (0.44–0.95)	–	0.42 (0.19–0.92)
OR fully adjusted	Reference	–	0.43 (0.25–0.72)	–	0.67 (0.45–1.02)	–	0.41 (0.18–0.94)
OR IPTW			0.44 (0.26–0.74)		0.70 (0.50–0.98)		0.55 (0.29–1.05)
Second/third course							
LDA, n	1001 (956–1022)/2071	37 (32–43)/131	63 (51–77)/272	51 (44–57)/156	420 (401–441)/963	73 (63–85)/185	100 (87–111)/295
OR crude	Reference	0.41 (0.26–0.65)	0.32 (0.21–0.48)	0.52 (0.33–0.81)	0.83 (0.68–1.02)	0.69 (0.46–1.03)	0.54 (0.39–0.77)
OR age/sex-adjusted	Reference	0.42 (0.26–0.66)	0.34 (0.22–0.51)	0.52 (0.33–0.82)	0.83 (0.68–1.02)	0.73 (0.49–1.09)	0.55 (0.39–0.78)
OR fully adjusted	Reference	0.48 (0.29–0.77)	0.35 (0.22–0.54)	0.54 (0.33–0.87)	0.88 (0.70–1.11)	0.72 (0.46–1.12)	0.64 (0.45–0.92)
OR IPTW		0.48 (0.30–0.79)	0.35 (0.23–0.55)	0.57 (0.33–0.99)	0.90 (0.73–1.11)	0.79 (0.49–1.26)	0.64 (0.44–0.94)
Remission, n	325 (304–347)/2071	7 (4–12)/131	10 (4–16)/272	11 (6–22)/156	110 (100–124)/963	20 (15–26)/185	23 (16–31)/295
OR crude	Reference	0.28 (0.09–0.83)	0.20 (0.07–0.54)	0.41 (0.15–1.06)	0.68 (0.51–0.90)	0.61 (0.33–1.13)	0.41 (0.22–0.77)
OR age/sex-adjusted	Reference	0.29 (0.10–0.88)	0.21 (0.08–0.60)	0.40 (0.15–1.07)	0.67 (0.50–0.91)	0.71 (0.38–1.31)	0.42 (0.22–0.79)
OR fully adjusted	Reference	0.38 (0.12–1.18)	0.23 (0.08–0.65)	0.43 (0.16–1.18)	0.75 (0.54–1.03)	0.73 (0.38–1.41)	0.54 (0.28–1.05)
OR IPTW		0.35 (0.13–1.01)	0.21 (0.07–0.66)	0.80 (0.34–1.87)	0.76 (0.55–1.04)	0.73 (0.36–1.48)	0.55 (0.28–1.07)
Fourth course or more							
LDA, n	149 (140–160)/397	18 (14–26)/140	37 (31–43)/177	37 (28–45)/161	234 (221–248)/717	86 (79–95)/270	69 (59–79)/277
OR crude	Reference	0.25 (0.13–0.47)	0.43 (0.27–0.68)	0.50 (0.30–0.83)	0.80 (0.60–1.07)	0.77 (0.54–1.11)	0.55 (0.37–0.82)
OR age/sex-adjusted	Reference	0.26 (0.13–0.50)	0.43 (0.27–0.69)	0.52 (0.31–0.86)	0.82 (0.61–1.09)	0.80 (0.56–1.15)	0.56 (0.38–0.84)
OR fully adjusted	Reference	0.27 (0.14–0.52)	0.41 (0.25–0.68)	0.55 (0.32–0.96)	0.85 (0.63–1.16)	0.89 (0.60–1.32)	0.52 (0.33–0.81)
OR IPTW		0.27 (0.11–0.65)	0.38 (0.26–0.57)	0.46 (0.13–1.64)	0.83 (0.62–1.11)	0.99 (0.58–1.69)	0.57 (0.36–0.89)
Remission, n	35 (28–41)/397	3 (1–5)/140	8 (5–13)/177	5 (2–9)/161	42 (35–49)/717	13 (9–18)/270	16 (11–21)/277
OR crude	Reference	0.18 (0.03–1.08)	0.49 (0.18–1.38)	0.33 (0.08–1.31)	0.64 (0.36–1.14)	0.51 (0.23–1.13)	0.61 (0.29–1.31)
OR age/sex-adjusted	Reference	0.22 (0.04–1.31)	0.54 (0.19–1.52)	0.37 (0.09–1.49)	0.69 (0.38–1.23)	0.59 (0.26–1.33)	0.66 (0.30–1.41)
OR fully adjusted	Reference	0.23 (0.04–1.43)	0.55 (0.19–1.57)	0.44 (0.10–1.91)	0.79 (0.41–1.52)	0.72 (0.29–1.76)	0.53 (0.23–1.19)
OR IPTW		0.14 (0.00–7.07)	0.47 (0.15–1.45)	0.39 (0.02–6.96)	0.80 (0.43–1.48)	0.37 (0.11–1.26)	0.59 (0.21–1.62)

Results are shown for patients with more than 6 months of follow-up. ORs are not presented for exposure groups of <100 patients (as indicated by –). The fully adjusted model included age (and the quadratic term), sex, disease duration, csDMARD use, C reactive protein, patient global score, treatment start year, comorbidity score and previous infection. Results including imputation of missing data. Numbers in parentheses for remission and LDA are minimum–maximum across the imputations, with the denominator showing all patients in the group. csDMARD, conventional synthetic disease-modifying antirheumatic drug; DAPSA28, Disease Activity index for Psoriatic Arthritis based on 28-joint evaluation; IPTW, inverse probability of treatment-weighted; LDA, low disease activity.

This study has several strengths. The collaboration across five countries increases power for rare exposures and offers insights into differences in treatment patterns. Extensive linkages to nationwide registries allowed for identification of concomitant comorbidities and extra-musculoskeletal manifestations. The lack of direct pharma funding sets the study apart from many of the previous comparisons across different b/tsDMARDs in PsA.

Some limitations also need to be pointed out for this study. The PsA disease entity is heterogeneous, and disease manifestations include psoriasis (of skin, nails), dactylitis, enthesitis, axial disease, uveitis and inflammatory bowel disease, not to mention metabolic syndrome and other comorbidities. Channelling across treatments, due to this heterogeneity, is likely to occur, and although we accommodated this to some extent by adding comorbidities to the multivariable analyses, residual confounding is likely to have impacted our results. Further, all types of disease domains are not covered in the outcome measures—for example,

skin manifestations, dactylitis and enthesitis are not sufficiently captured in the rheumatology registries contributing to this study, and while 28-joint counts are available the data on 66/68-joint counts had high missingness and data on axial involvement were not available. This could impact our study results as the available b/tsDMARDs affect the PsA domains differently.³⁸ Other comorbidities that are primarily treated in primary care, such as depression and fibromyalgia, are also not adequately captured through the national registers and may be prevalent in difficult-to-treat patients. The differences in use of b/tsDMARDs between countries are also remarkable. Overall, Sweden and to some extent Finland seemed to have higher proportional use of newer b/tsDMARDs, where apremilast was used even as first-line b/tsDMARD. In Denmark, apremilast is not included in the national recommendations for routine care treatment of PsA, and is in Norway not reimbursed in the public healthcare system, resulting in negligible use in these countries.^{39 40} This

differential use across countries could have biased our results if access to treatment and monitoring differed between countries. Further, a consequence of TNFi normally being used as the first b/tsDMARD,^{39,41} the comparatively good performance of adalimumab in this study may be boosted by clinicians choosing a TNFi (such as adalimumab) in case of secondary inefficacy of a first TNFi (and thus in a population perhaps more prone to respond to TNF inhibition), but to switch mode of action in case of primary inefficacy. We unfortunately did not have data to explore this further.

CONCLUSION

In this large observational study of newer b/tsDMARDs in PsA, the inferior outcomes for certain newer b/tsDMARDs versus adalimumab highlight their unestablished position in the PsA treatment algorithm. The poor remission rates irrespective of mode of action in biologic-experienced patients challenge the feasibility of treat-to-target approaches and pinpoint the need for additional treatment alternatives, including non-pharmacologic interventions.

Author affiliations

¹DANBIO and Copenhagen Center for Arthritis Research (COPECARE), Center for Rheumatology and Spine Diseases, Centre of Head and Orthopedics, University Hospital of Copenhagen, Rigshospitalet, Copenhagen University Hospital Glostrup, Glostrup, Denmark

²Faculty of Health and Medical Sciences, University of Copenhagen, København, Denmark

³Department of Medicine, Karolinska Universitetssjukhuset i Solna, Stockholm, Sweden

⁴Department of Clinical Sciences Lund, Skåne University Hospital Lund, Lund University, Lund, Sweden

⁵Department of Rheumatology, Skåne University Hospital Lund, Lund University, Lund, Sweden

⁶FOB-FIN and University of Helsinki, Helsinki University Central Hospital, Helsinki, Finland

⁷Centre for Rheumatology Research (ICEBIO), Landspítali University Hospital, Reykjavik, Iceland

⁸Faculty of Medicine, University of Iceland, Reykjavik, Iceland

⁹Clinical Epidemiology Division, Department of Medicine, Karolinska Universitetssjukhuset, Stockholm, Sweden

¹⁰Centre for Rheumatology Research, Landspítali University Hospital, Reykjavik, Iceland

¹¹Jyväskylä Central Hospital (KSSHP), Jyväskylä, Finland

¹²UEF, Faculty of Health Sciences, Kuopio, Finland

¹³Division of Rheumatology and Research, Diakonhjemmet Hospital, Oslo, Norway

¹⁴Center for Treatment of Rheumatic and Musculoskeletal Diseases (REMEDY), Department of Rheumatology, Diakonhjemmet Hospital, Oslo, Norway

¹⁵Research Unit, Hospital of Southern Norway Trust, Sorlandet Hospital Kristiansand, Kristiansand, Norway

¹⁶Department of Rheumatology, Center of Rheumatic Research Aalborg (CERRA), Aalborg University Hospital, Aalborg, Denmark

¹⁷Department of Clinical Medicine, Aalborg Universitet, Aalborg, Denmark

¹⁸Faculty of Medicine, University of Iceland and Department of Research, Landspítali háskolasjúkrahús, Reykjavik, Iceland

¹⁹Department of Rheumatology and Inflammation Research, University of Gothenburg Faculty of Health Sciences, Goteborg, Sweden

Acknowledgements On behalf of the Danish DANBIO, Swedish SRQ, Norwegian NOR-DMARD, Finnish ROB-FIN and Icelandic ICEBIO registries.

Contributors Substantial contributions to study conception and design: BGJ, DDG, UL, JKW. Substantial contributions to acquisition of data: all authors. Substantial contributions to analysis and interpretation of data: DDG, UL, BGJ, JKW. Drafting the article or revising it critically for important intellectual content: all authors. Final approval of the version of the article to be published: all authors. Guarantor of the overall content: BGJ

Funding The study is partly funded by NordForsk and Forum grants. It is also partly funded by Vinnova, Swedish Research Council, Swedish Heart Lung Foundation and Karolinska Institutet/Region Stockholm (ALF). The Center for Treatment of Rheumatic and Musculoskeletal Diseases (REMEDY) is funded as a Centre for Clinical Treatment Research by the Research Council of Norway (project 328657).

Competing interests BG: Pfizer, BMS, Sandoz and chairs the steering committee of the Danish Rheumatology Registry (DANBIO), which receives public funding from hospital owners and funding from pharmaceutical companies. JKW: AbbVie, Amgen, Eli Lilly, Novartis and Pfizer. DCN: AbbVie, BMS, Lilly, MSD, Novartis, Pfizer, Roche and UCB. MLH: AbbVie, Biogen, BMS, Celltrion, Eli Lilly, Janssen Biologics BV, Lundbeckfonden, MSD, Pfizer, Roche, Samsung Bioepis, Sandoz and Novartis. JA: AbbVie, BMS, Eli Lilly, Galapagos, MSD, Pfizer, Roche, Samsung Bioepis and Sanofi. Agreements between Karolinska Institutet (with JA as PI) and the listed entities, mainly for the national safety monitoring of rheumatology immunomodulators in Sweden (ARTIS). TS: AbbVie, BMS, Celgene, Medac, Merck, Novartis, Orion Pharma, Pfizer, Roche, Sandoz, UCB and Boehringer Ingelheim. SAP: Boehringer Ingelheim. BM: Novartis. EKK: Center for Treatment of Rheumatic and Musculoskeletal Diseases (REMEDY) funded as a Centre for Clinical Treatment Research by the Research Council of Norway (project 328657). LD: BMS, Janssen, UCB and Boehringer Ingelheim.

Patient and public involvement Patients and/or the public were not involved in the design, or conduct, or reporting or dissemination plans of this research.

Patient consent for publication Not required.

Ethics approval This study involves human participants and was approved by the data protection and/or ethical committees in each of the Nordic countries, as required. Denmark: Capital Region Data Protection Office (RH-2015-209, I-suite 04145); ethical approval not required for registry studies (komitélovens §14, stk 2; www.nvk.dk). Finland: Helsinki University Hospital Coordinating Ethics Committee (73/13/03/00/2014). Norway: Regional Ethics Committee of South Eastern Norway (2011/1339 and 2017/243). Sweden: Ethical Review Board Stockholm (2015/1844-31/2). Iceland: National Bioethics Committee of Iceland (17-048-V13 and VSNb2017010049/03.01). Informed written consent for the reporting of anonymised registry data for research purposes was not required according to the approval committees, apart from Norway where such approval was required (and collected) for patients included after 2012. Participants gave informed consent to participate in the study before taking part.

Provenance and peer review Not commissioned; externally peer reviewed.

Data availability statement Due to privacy and ethical concerns any raw data can not be shared. Aggregated data can be shared upon reasonable request

Supplemental material This content has been supplied by the author(s). It has not been vetted by BMJ Publishing Group Limited (BMJ) and may not have been peer-reviewed. Any opinions or recommendations discussed are solely those of the author(s) and are not endorsed by BMJ. BMJ disclaims all liability and responsibility arising from any reliance placed on the content. Where the content includes any translated material, BMJ does not warrant the accuracy and reliability of the translations (including but not limited to local regulations, clinical guidelines, terminology, drug names and drug dosages), and is not responsible for any error and/or omissions arising from translation and adaptation or otherwise.

ORCID iDs

Bente Glinthorg <http://orcid.org/0000-0002-8931-8482>

Johan Karlsson Wallman <http://orcid.org/0000-0002-4915-2924>

Merete Lund Hetland <http://orcid.org/0000-0003-4229-6818>

Johan Askling <http://orcid.org/0000-0003-0433-0616>

Tuulikki Sokka <http://orcid.org/0000-0002-6972-5603>

Sella A Provan <http://orcid.org/0000-0001-5442-902X>

Ulf Lindström <http://orcid.org/0000-0002-2250-9348>

REFERENCES

- Toussi A, Mavarakis N, Le ST, *et al*. Updated therapies for the management of psoriatic arthritis. *Clin Immunol* 2020;220:108536.
- Chao R, Kavanaugh A. Psoriatic arthritis: newer and older therapies. *Curr Rheumatol Rep* 2019;21:75.
- Coates LC, Soriano ER, Corp N, *et al*. Group for research and assessment of psoriasis and psoriatic arthritis (grappa): updated treatment recommendations for psoriatic arthritis 2021. *Nat Rev Rheumatol* 2022;18:465–79.
- McInnes IB, Behrens F, Mease PJ, *et al*. Secukinumab versus adalimumab for treatment of active psoriatic arthritis (exceed): a double-blind, parallel-group, randomised, active-controlled, phase 3B trial. *Lancet* 2020;395:1496–505.
- Mease PJ, Smolen JS, Behrens F, *et al*. A head-to-head comparison of the efficacy and safety of ixekizumab and adalimumab in biological-naïve patients with active psoriatic arthritis: 24-week results of A randomised, open-label, blinded-assessor trial. *Ann Rheum Dis* 2020;79:123–31.
- McInnes IB, Anderson JK, Magrey M, *et al*. Trial of upadacitinib and adalimumab for psoriatic arthritis. *N Engl J Med* 2021;384:1227–39.
- Mease P, Hall S, FitzGerald O, *et al*. Tofacitinib or adalimumab versus placebo for psoriatic arthritis. *N Engl J Med* 2017;377:1537–50.
- Letarouilly J-G, Flachaire B, Labadie C, *et al*. Secukinumab and ustekinumab treatment in psoriatic arthritis: results of a direct comparison. *Rheumatology (Oxford)* 2021;60:2773–82.

- 9 Smolen JS, Siebert S, Korotaeva TV, *et al.* Effectiveness of IL-12/23 inhibition (ustekinumab) versus tumour necrosis factor inhibition in psoriatic arthritis: observational psabio study results. *Ann Rheum Dis* 2021;80:1419–28.
- 10 Gossec L, Siebert S, Bergmans P, *et al.* Persistence and effectiveness of the IL-12/23 pathway inhibitor ustekinumab or tumour necrosis factor inhibitor treatment in patients with psoriatic arthritis: 1-year results from the real-world psabio study. *Ann Rheum Dis* 2022;81:823–30.
- 11 Haddad A, Gazitt T, Feldhamer I, *et al.* Treatment persistence of biologics among patients with psoriatic arthritis. *Arthritis Res Ther* 2021;23:44.
- 12 Zhang H, Wen J, Alexander GC, *et al.* Comparative effectiveness of biologics and targeted therapies for psoriatic arthritis. *RMD Open* 2021;7:e001399.
- 13 Feldman SR, Zhang J, Martinez DJ, *et al.* Real-World biologic and apremilast treatment patterns in patients with psoriasis and psoriatic arthritis. *Dermatol Online J* 2021;27:10.
- 14 Geale K, Lindberg I, Paulsson EC, *et al.* Persistence of biologic treatments in psoriatic arthritis: a population-based study in sweden. *Rheumatol Adv Pract* 2020;4:rkaa070.
- 15 Pina Vegas L, Penso L, Claudepierre P, *et al.* Long-Term persistence of first-line biologics for patients with psoriasis and psoriatic arthritis in the French health insurance database. *JAMA Dermatol* 2022;158:513–22.
- 16 Lindström U, Glintborg B, Di Giuseppe D, *et al.* Comparison of treatment retention and response to secukinumab versus tumour necrosis factor inhibitors in psoriatic arthritis. *Rheumatology (Oxford)* 2021;60:3635–45.
- 17 Ruyssen-Witrand A, Perry R, Watkins C, *et al.* Efficacy and safety of biologics in psoriatic arthritis: a systematic literature review and network meta-analysis. *RMD Open* 2020;6:e001117.
- 18 McInnes IB, Nash P, Ritchlin C, *et al.* Secukinumab for psoriatic arthritis: comparative effectiveness versus licensed biologics/apremilast: a network meta-analysis. *J Comp Eff Res* 2018;7:1107–23.
- 19 Strand V, Elaine Husni M, Betts KA, *et al.* Network meta-analysis and cost per responder of targeted immunomodulators in the treatment of active psoriatic arthritis. *BMC Rheumatol* 2018;2:3.
- 20 Lu C, Wallace BI, Waljee AK, *et al.* Comparative efficacy and safety of targeted dmards for active psoriatic arthritis during induction therapy: a systematic review and network meta-analysis. *Semin Arthritis Rheum* 2019;49:381–8.
- 21 Ungprasert P, Thongprayoon C, Davis JM. Indirect comparisons of the efficacy of biological agents in patients with psoriatic arthritis with an inadequate response to traditional disease-modifying anti-rheumatic drugs or to non-steroidal anti-inflammatory drugs: A meta-analysis. *Semin Arthritis Rheum* 2016;45:428–38.
- 22 Simons N, Degboë Y, Barnetche T, *et al.* Biological DMARD efficacy in psoriatic arthritis: a systematic literature review and meta-analysis on articular, enthesitis, dactylitis, skin and functional outcomes. *Clin Exp Rheumatol* 2020;38:508–15.
- 23 Wu D, Yue J, Tam LS. Efficacy and safety of biologics targeting interleukin-6, -12/23 and -17 pathways for peripheral psoriatic arthritis: a network meta-analysis. *Rheumatology (Oxford)* 2018;57:563–71.
- 24 Kawalec P, Holko P, Močko P, *et al.* Comparative effectiveness of abatacept, apremilast, secukinumab and ustekinumab treatment of psoriatic arthritis: a systematic review and network meta-analysis. *Rheumatol Int* 2018;38:189–201.
- 25 Song GG, Lee YH. Relative efficacy and safety of apremilast, secukinumab, and ustekinumab for the treatment of psoriatic arthritis. *Z Rheumatol* 2018;77:613–20.
- 26 Runarsdottir EE, Gunnarsdottir AI, Love TJ, *et al.* The majority of patients with psoriatic arthritis are not eligible for randomised clinical trials. *Clin Exp Rheumatol* 2018;36:1068–73.
- 27 Correction: *eular recommendations for the management of psoriatic arthritis with pharmacological therapies: 2019 update.* *Ann Rheum Dis* 2020;79:700–12.
- 28 Michelsen B, Sexton J, Smolen JS, *et al.* Can disease activity in patients with psoriatic arthritis be adequately assessed by a modified disease activity index for psoriatic arthritis (dapsa) based on 28 joints? *Ann Rheum Dis* 2018;77:1736–41.
- 29 Kristensen LE, Saxne T, Geborek P. The LUNDEX, a new index of drug efficacy in clinical practice: results of a five-year observational study of treatment with infliximab and etanercept among rheumatoid arthritis patients in southern Sweden. *Arthritis Rheum* 2006;54:600–6.
- 30 Lydersen S. Multiple imputation of missing data. *Tidsskr Den Nor Leforening* 2022;142.
- 31 Falk Delgado A, Falk Delgado A. The association of funding source on effect size in randomized controlled trials: 2013-2015-a cross-sectional survey and meta-analysis. *Trials* 2017;18:125.
- 32 Nagy G, Roodenrijs NM, Welsing PM, *et al.* EULAR definition of difficult-to-treat rheumatoid arthritis. *Ann Rheum Dis* 2021;80:31–5.
- 33 Nagy G, Roodenrijs NMT, Welsing PMJ, *et al.* EULAR points to consider for the management of difficult-to-treat rheumatoid arthritis. *Ann Rheum Dis* 2022;81:20–33.
- 34 Ballegaard C, Højgaard P, Dreyer L, *et al.* Impact of comorbidities on tumor necrosis factor inhibitor therapy in psoriatic arthritis: a population-based cohort study. *Arthritis Care Res (Hoboken)* 2018;70:592–9.
- 35 Elliott A, McGonagle D, Rooney M. Integrating imaging and biomarker assessment to better define psoriatic arthritis and predict response to biologic therapy. *Rheumatology (Oxford)* 2021;60:vi38–52.
- 36 Højgaard P, Glintborg B, Kristensen LE, *et al.* The influence of obesity on response to tumour necrosis factor- α inhibitors in psoriatic arthritis: results from the DANBIO and ICEBIO registries. *Rheumatology (Oxford)* 2016;55:2191–9.
- 37 Højgaard P, Glintborg B, Hetland ML, *et al.* Association between tobacco smoking and response to tumour necrosis factor α inhibitor treatment in psoriatic arthritis: results from the DANBIO registry. *Ann Rheum Dis* 2015;74:2130–6.
- 38 Torres T, Barcelos A, Filipe P, *et al.* A systematic review with network meta-analysis of the available biologic therapies for psoriatic disease domains. *Front Med (Lausanne)* 2020;7:618163.
- 39 Medical council, treatment recommendations for b/tsdmards in psoriatic arthritis (in danish). n.d. Available: <https://medicinraadet.dk/media/kj2dkagp/behandlingsvejil-inkl-%C3%A6gemiddelrekom-for-anvendelse-af-biologisk-behandling-af-psoriasisartrit-vers-1-5-adlegacy.pdf>
- 40 Apremilast for treatment of psoriasis and psoriatic arthritis. the norwegian health care service. n.d. Available: <https://nyemetoder.no/metoder/apremilast-otezla>
- 41 Svensk Reumatologisk Förening. Riktlinjer för läkemedelsbehandling vid axial spondylartrit och psoriasisartrit 2022 (in swedish). n.d. Available: <https://svenskreumatologi.se/wp-content/uploads/2022/03/riktlinjer-axial-spondylartrit-och-psoriasisartrit-220127.pdf>

Uptake and effectiveness of newer biologic and targeted synthetic disease-modifying anti-rheumatic drugs in psoriatic arthritis

Results from five Nordic biologics registries

Bente Glinborg et al

Supplementary material

Supplementary table S1

ICD10-codes in the National Patient Registries for the identification of extra-musculoskeletal manifestations and comorbidities prior to b/tsDMARD treatment start

	Disease	ICD10
Extra-musculoskeletal manifestations	Inflammatory bowel disease	K50-K51
	Anterior uveitis	H20, H221
	Posterior uveitis	H30, H32.8
Other comorbidities	Congestive heart failure	I11.0, I13.0, I13.2, I50
	Malignancy	Any tumor:C00-C75, Metastatic solid tumor: C76-80, Lymphoma: C81-C85, C88, C90, C96, Leukaemia: C91-C95
	Infection	A00-B99, D73.3, E06.0, E32.1, G00-G02, G04.2, G05-G07, H00.0, H44.0, H60.0-H60.3, H66-H67, H70, I30.1, I40.0, J00-J22, J32, J34.0, J36, J38.3, J39.0-J39.1, J44.0, J85, J86, K04.4, K04.6, K04.7, K10.2, K11.3, K12.2, K14.0, K57.0, K57.2, K57.4, K57.8, K61, K63.0, K65.0, K65.1, K65.2, K65.9, L00-L08, L30.3, M00-M01, M46.2-M46.5, M60.0, M65.0, M71.0, M71.1, M72.6, M86, N10, N11, N12, N13.6, N15.1, N15.9, N30.0 N30.8, N30.9, N34.0, N39.0, N41.2, N43.1, N45.2, N45.3, N45.4, N48.2, N61, N70, N73, N75.1, O23, O26.4, O41.1, O75.3, O85, O86, O88.3, O91, O98
	Knee or hip prosthesis	S: NGB, NFB Denmark: 8426,8419
	Depression/anxiety	F3, F40-F48
	Chronic obstructive or interstitial pulmonary disease	J41-J44, J84.1, J84.9
	Diabetes	E10-E14, O24
	Myocardial infarction	I20.0, I21, I22
	Chronic kidney disease	I12, I13; N00-N05; N07; N11; N14; N18-N19; Q61
	Thrombosis	I26, I80-I82
Comorbidities were identified for specialized care contacts (in-hospital and outpatient). Both main and contributory diagnoses were included Country-specific time periods for contributing comorbidity data: Iceland: not available, Denmark: until August 2018, Sweden, Norway, Finland: Until data-censoring 31 st Dec 2018		

Supplementary table S2. Comorbidities and distribution of patients across countries

Footer: Numbers are mean (Standard deviations) unless otherwise stated

¹⁾ Comorbidities registered in 0-5 years before baseline, see **Supplementary table S1** for definitions.²⁾ Treated in inpatient or outpatient specialized care 0-5 years before baseline.

1st course	Adalimumab	Abatacept	Apremilast	Ixekizumab	Secukinumab	Tofacitinib	Ustekinumab
N	3181	26	500	42	266	47	128
Country, N (%):							
Denmark	820 (26)	4 (15)	12 (2)	22 (52)	79 (30)	7 (15)	46 (36)
Finland	378 (12)	2 (8)	136 (27)	5 (12)	45 (17)	19 (40)	24 (19)
Iceland	69 (2)	0 (0)	0 (0)	0 (0)	4 (2)	0 (0)	2 (2)
Norway	36 (1)	0 (0)	0 (0)	0 (0)	3 (1)	0 (0)	0 (0)
Sweden	1878 (59)	20 (77)	352 (70)	15 (36)	135 (51)	21 (45)	56 (44)
Comorbidity, N (%) ¹							
Uveitis	1189 (63.8)	12 (70.6)	95 (34.3)	3 (42.9)	47 (44.8)	13 (61.9)	21 (60.0)
Inflammatory bowel disease	73 (2.3)	1 (3.9)	3 (0.6)	0 (0.0)	2 (0.8)	0 (0.0)	6 (4.7)
Malignancy	74 (2.3)	2 (7.7)	42 (8.4)	1 (2.4)	17 (6.4)	2 (4.3)	2 (1.6)
Chronic pulmonary disease	32 (1.0)	4 (15.4)	16 (3.2)	1 (2.4)	5 (1.9)	0 (0.0)	4 (3.1)
Congestive heart disease	25 (0.8)	0 (0.0)	14 (2.8)	0 (0.0)	10 (3.8)	1 (2.1)	0 (0.0)
Diabetes	133 (4.2)	2 (7.7)	46 (9.2)	3 (7.1)	14 (5.3)	4 (8.5)	9 (7.0)
Myocardial infarction	34 (1.1)	0 (0.0)	5 (1.0)	1 (2.4)	2 (0.8)	1 (2.1)	0 (0.0)
Chronic kidney disease	20 (0.6)	1 (3.9)	11 (2.2)	1 (2.4)	8 (3.0)	1 (2.1)	0 (0.0)
Knee or hip prosthesis	61 (1.9)	1 (3.9)	13 (2.6)	1 (2.4)	9 (3.4)	1 (2.1)	3 (2.3)
Thrombosis	40 (1.3)	2 (7.7)	20 (4.0)	0 (0.0)	11 (4.1)	2 (4.3)	1 (0.8)
2nd and 3rd course							
N	2080	132	272	157	966	185	295
Country, N (%):							
Denmark	432 (21)	16 (12)	8 (3)	82 (52)	213 (22)	25 (145)	48 (16)
Finland	168 (8)	13 (10)	26 (10)	19 (12)	128 (13)	24 (13)	60 (20)
Iceland	75 (4)	1 (1)	3 (1)	0 (0)	37 (4)	1 (1)	8 (3)
Norway	74 (4)	1 (1)	0 (0)	2 (1)	45 (5)	0 (0)	5 (2)
Sweden	1331 (64)	101 (77)	235 (86)	54 (34)	543 (56)	135 (73)	174 (59)
Comorbidity, N (%) ¹							
Uveitis	739 (57.4)	37 (46.3)	49 (30.1)	38 (56.7)	275 (50.3)	59 (48.8)	93 (55.4)
Inflammatory bowel disease	52 (2.5)	2 (1.5)	5 (1.8)	4 (2.6)	4 (0.4)	6 (3.2)	5 (1.7)
Malignancy	73 (3.5)	5 (3.8)	23 (8.5)	4 (2.6)	37 (3.8)	16 (8.7)	10 (3.4)
Chronic pulmonary disease	45 (2.2)	3 (2.3)	6 (2.2)	2 (1.3)	22 (2.3)	4 (2.2)	7 (2.4)
Congestive heart disease	17 (0.8)	7 (5.3)	9 (3.3)	3 (1.9)	12 (1.2)	3 (1.6)	3 (1.0)
Diabetes	135 (6.5)	11 (8.3)	27 (9.9)	9 (5.7)	74 (7.7)	21 (11.4)	29 (9.8)
Myocardial infarction	32 (1.5)	4 (3.0)	5 (1.8)	2 (1.3)	18 (1.9)	6 (3.2)	2 (0.7)
Chronic kidney disease	31 (1.5)	4 (3.0)	4 (1.5)	2 (1.3)	19 (2.0)	4 (2.2)	6 (2.0)
Knee or hip prosthesis	73 (3.5)	5 (3.8)	15 (5.5)	5 (3.2)	33 (3.4)	8 (4.3)	7 (2.4)
Thrombosis	49 (2.4)	2 (1.5)	10 (3.7)	3 (1.9)	24 (2.5)	4 (2.2)	9 (3.1)
4th+ course							
N	398	142	177	162	719	274	277
Country, N (%):							
Denmark	116 (29)	13 (9)	9 (5)	73 (45)	162 (23)	58 (21)	55 (20)

Finland	12 (3)	13 (9)	18 (10)	8 (5)	64 (9)	38 (14)	29 (11)
Iceland	14 (4)	2 (4)	3 (2)	0 (0)	20 (3)	2 (1)	5 (2)
Norway	14 (4)	1 (1)	0 (0)	3 (2)	28 (4)	5 (2)	11 (4)
Sweden	242 (61)	113 (80)	147 (83)	78 (48)	445 (62)	171 (62)	177 (64)
Comorbidity, N (%): ¹ :							
Uveitis	122 (54.0)	40 (44.0)	45 (40.5)	57 (58.8)	228 (50.2)	102 (52.6)	103 (56.9)
Inflammatory bowel disease	11 (2.8)	2 (1.4)	4 (2.3)	2 (1.2)	14 (2.0)	14 (5.1)	13 (4.7)
Malignancy	23 (5.8)	8 (5.6)	10 (5.7)	6 (3.7)	21 (2.9)	9 (3.3)	13 (4.7)
Chronic pulmonary disease	6 (1.5)	8 (5.6)	8 (4.5)	2 (1.2)	15 (2.1)	10 (3.7)	6 (2.2)
Congestive heart disease	5 (1.3)	0 (0.0)	8 (4.5)	1 (0.6)	11 (1.5)	4 (1.5)	3 (1.1)
Diabetes	24 (6.0)	8 (5.6)	11 (6.2)	8 (4.9)	61 (8.5)	30 (11.0)	20 (7.2)
Myocardial infarction	4 (1.0)	1 (0.7)	7 (4.0)	2 (1.2)	14 (2.0)	7 (2.6)	5 (1.8)
Chronic kidney disease	7 (1.8)	6 (4.2)	6 (3.4)	2 (1.2)	19 (2.6)	10 (3.7)	4 (1.4)
Knee or hip prosthesis	18 (4.5)	12 (8.5)	10 (5.7)	11 (6.8)	53 (7.4)	21 (7.7)	18 (6.5)
Thrombosis	7 (1.8)	4 (2.8)	6 (3.4)	2 (1.2)	17 (2.4)	7 (2.6)	8 (2.9)

Supplementary table S3. Percentage of missing data at baseline in patients starting adalimumab or a newer b/tsDMARD. Presented by line of treatment

1st course	Adalimumab	Abatacept	Apremilast	Ixekizumab	Secukinumab	Tofacitinib	Ustekinumab
N	3181	26	500	42	266	47	128
Age	0	0	0	0	0	0	0
Sex	0	0	0	0	0	0	0
Disease duration	20	38	18	17	24	19	30
Number of previous b/tsDMARDs	0	0	0	0	0	0	0
Patient pain	45	46	50	74	63	60	73
Patient global health	45	46	50	71	63	57	74
Swollen joint count 28	46	50	52	71	64	57	74
Tender joint count 28	46	50	51	71	64	60	75
CRP	42	42	50	74	64	60	74
DAS28	56	50	65	81	71	66	81
DAPSA28	55	50	60	81	71	66	81
csDMARDs	41	35	45	83	61	55	73
Comorbidities	0	0	0	0	0	0	0
2nd/3rd course							
N	132	2080	272	157	966	185	295
Age	0	0	0	0	0	0	0
Sex	0	0	0	0	0	0	0
Disease duration	38	36	36	15	30	28	35
Number of previous b/tsDMARDs	47	40	45	52	45	42	50
Patient pain	47	39	45	50	45	43	50
Patient global health	48	41	46	49	46	41	49
Swollen joint count 28	48	40	46	50	46	42	49
Tender joint count 28	61	52	57	60	58	53	60
CRP	46	38	44	46	44	36	45
DAS28	55	49	54	62	57	50	57
DAPSA28	39	38	40	57	43	35	43
Comorbidities	0	0	0	0	0	0	0
4th+ course							
N	142	398	177	162	719	274	277
Age	0	0	0	0	0	0	0
Sex	0	0	0	0	0	0	0
Disease duration	58	50	57	33	45	37	49
Number of previous b/tsDMARDs	0	0	0	0	0	0	0
Patient pain	42	40	45	40	38	32	39
Patient global health	39	39	44	39	38	32	40
Swollen joint count 28	37	42	45	40	37	34	40
Tender joint count 28	36	42	44	41	38	33	40
CRP	37	42	41	35	36	30	35
DAS28	51	54	57	55	47	49	53
DAPSA28	49	52	53	54	47	45	48
csDMARDs	36	43	37	40	37	29	35
Comorbidities	0	0	0	0	0	0	0

Supplementary Table S4. Treatment retention during 1-year follow-up, presented by course of treatment. Results of Cox regression analyses split at 6 months to accommodate the non-proportionality assumption.

The fully adjusted model included age (and the quadratic term), sex, disease duration, csDMARD use, C-reactive protein, patient global score, treatment start year, comorbidity score, and previous infection. *Is not presented for first course abatacept, ixekizumab and tofacitinib due to few treatment starts

	Time (months)	Adalimumab	Abatacept	Apremilast	Ixekizumab	Secukinumab	Tofacitinib	Ustekinumab
1st course								
N		3181	26	500	42	266	47	128
Retention Rate		0.74 (0.72-0.75)	-	0.58 (0.53-0.62)	-	0.75 (0.70-0.80)	-	0.83 (0.75-0.88)
HR crude	0-12		-	1.86 (1.59-2.18)	-	0.91 (0.71-1.16)	-	0.59 (0.39-0.90)
HR adj	0-12		-	1.68 (1.39-2.02)	-	0.90 (0.69-1.17)	-	0.56 (0.36-0.88)
HR IPTW	0-12		-	1.85 (1.51-2.28)		0.85 (0.64-1.14)		1.36 (0.67-2.77)
2nd/3rd course								
N		2080	132	272	157	966	185	295
Retention Rate		0.65 (0.63-0.67)	0.45 (0.36-0.53)	0.43 (0.37-0.49)	0.65 (0.57-0.72)	0.68 (0.64-0.70)	0.59 (0.51-0.66)	0.58 (0.53-0.64)
HR crude	0-12		1.73 (1.38-2.18)	1.98 (1.66-2.36)	0.96 (0.72-1.27)	0.89 (0.78-1.02)	1.22 (0.96-1.55)	1.18 (0.98-1.42)
HR adj	0-12		1.58 (1.24-2.01)	1.87 (1.54-2.27)	1.04 (0.78-1.39)	0.87 (0.76-1.01)	1.25 (0.97-1.62)	1.06 (0.87-1.29)
HR IPTW	0-12		1.58 (1.19-2.10)	1.86 (1.44-2.39)	1.24 (0.64-2.40)	0.87 (0.76-0.99)	1.24 (0.97-1.59)	0.99 (0.78-1.26)
HR crude	0-6		1.25 (0.90-1.74)	1.92 (1.54-2.38)	0.93 (0.66-1.32)	0.83 (0.70-0.98)	1.14 (0.84-1.55)	0.95 (0.73-1.22)
HR crude	6-12		2.89 (2.01-4.14)	2.10 (1.55-2.83)	1.01 (0.61-1.66)	1.02 (0.82-1.27)	1.38 (0.94-2.04)	1.67 (1.25-2.23)
HR adj	0-6		1.14 (0.76-1.69)	1.78 (1.17-2.71)	0.99 (0.70-1.41)	0.80 (0.70-0.93)	1.17 (0.80-1.72)	0.85 (0.68-1.06)
HR adj	6-12		2.55 (0.99-6.57)	1.98 (1.06-3.71)	1.08 (0.62-1.89)	0.99 (0.79-1.24)	1.41 (0.80-2.49)	1.47 (0.95-2.29)
4th+ course								
N		398	142	177	162	719	274	277
Retention Rate		0.65 (0.60-0.69)	0.35 (0.27-0.43)	0.41 (0.34-0.48)	0.57 (0.49-0.65)	0.61 (0.58-0.65)	0.55 (0.49-0.61)	0.49 (0.43-0.55)
HR crude	0-12		2.30 (1.74-3.04)	2.05 (1.56-2.70)	1.28 (0.95-1.72)	1.06 (0.86-1.29)	1.33 (1.04-1.70)	1.47 (1.16-1.86)
HR adj	0-12		2.36 (1.77-3.16)	1.94 (1.46-2.58)	1.25 (0.92-1.68)	1.00 (0.81-1.23)	1.27 (0.98-1.64)	1.54 (1.20-1.97)
HR IPTW	0-12		2.37 (1.71-3.29)	2.13 (1.53-2.98)	0.67 (0.34-1.30)	1.09 (0.88-1.35)	1.90 (1.26-2.88)	1.68 (1.29-2.19)
HR crude	0-6		1.81 (1.33-2.46)	1.75 (1.29-2.37)	1.23 (0.88-1.71)	0.79 (0.62-1.01)	1.14 (0.86-1.52)	0.82 (0.60-1.11)

HR crude	6-12		4.19 (2.48-7.10)	3.13 (1.88-5.21)	1.35 (0.71-2.59)	2.07 (1.38-3.10)	2.01 (1.24-3.28)	4.22 (2.76-6.45)
HR adj	0-6		1.17 (0.78-1.75)	1.82 (1.19-2.78)	1.00 (0.70-1.44)	0.82 (0.71-0.95)	1.21 (0.82-1.78)	0.87 (0.69-1.09)
HR adj	6-12		2.61 (0.99-6.86)	2.02 (1.07-3.80)	1.09 (0.62-1.93)	1.01 (0.80-1.27)	1.45 (0.81-2.60)	1.51 (0.96-2.37)

Supplementary table S5. DAPSA28 LDA or remission at 6 months, stratified by line of treatment. Results of multivariable logistic regression analyses with odds ratios (OR) and presented by course of treatment, based on complete case analyses.

Is not presented for first course abatacept, ixekizumab and tofacitinib due to few treatment starts in main analyses. The fully adjusted model included age (and the quadratic term), sex, disease duration, csDMARD use, C-reactive protein, patient global score, treatment start year, comorbidity score, and previous infection.

1st course	Adalimumab	Abatacept	Apremilast	Ixekizumab	Secukinumab	Tofacitinib	Ustekinumab
N LDA	929 / 1528	-	90 / 216	-	66 / 116	-	15 / 37
OR crude		-	0.46 (0.34-0.62)	-	0.85 (0.58-1.25)	-	0.44 (0.23-0.85)
OR age/sex adj		-	0.47 (0.35-0.63)	-	0.86 (0.58-1.27)	-	0.42 (0.21-0.82)
OR fully adj		-	0.47 (0.34-0.66)	-	0.85 (0.56-1.30)	-	0.40 (0.20-0.80)
N remission	401 / 1528	-	25 / 216	-	21 / 116	-	3 / 37
OR crude		-	0.35 (0.23-0.54)	-	0.60 (0.37-0.98)	-	0.24 (0.07-0.79)
OR age/sex adj		-	0.37 (0.24-0.59)	-	0.61 (0.37-1.01)	-	0.22 (0.07-0.75)
OR fully adj		-	0.43 (0.27-0.69)	-	0.64 (0.38-1.08)	-	0.23 (0.07-0.78)
2nd/3rd course							
N LDA	463 / 1042	19 / 64	22 / 131	19 / 53	214 / 505	35 / 93	48 / 149
OR crude		0.53 (0.30-0.92)	0.25 (0.16-0.41)	0.70 (0.39-1.24)	0.92 (0.74-1.14)	0.75 (0.49-1.17)	0.59 (0.41-0.86)
OR age/sex adj		0.53 (0.30-0.92)	0.26 (0.16-0.42)	0.70 (0.39-1.24)	0.92 (0.74-1.14)	0.76 (0.49-1.18)	0.58 (0.40-0.84)
OR fully adj		0.62 (0.35-1.10)	0.30 (0.18-0.49)	0.66 (0.36-1.22)	1.00 (0.78-1.28)	0.76 (0.47-1.23)	0.70 (0.47-1.04)
N remission	136 / 1042	4 / 64	2 / 131	4 / 53	53 / 505	9 / 93	11 / 149
OR crude		0.45 (0.16-1.27)	0.10 (0.03-0.43)	0.56 (0.20-1.60)	0.78 (0.55-1.09)	0.72 (0.35-1.47)	0.50 (0.26-0.95)
OR age/sex adj		0.46 (0.16-1.30)	0.11 (0.03-0.47)	0.57 (0.20-1.64)	0.76 (0.54-1.08)	0.74 (0.36-1.53)	0.48 (0.25-0.92)
OR fully adj		0.63 (0.22-1.82)	0.11 (0.03-0.47)	0.51 (0.17-1.51)	0.83 (0.57-1.22)	0.66 (0.30-1.43)	0.63 (0.32-1.26)
4th+ course							
N LDA	82 / 214	8 / 72	21 / 101	16 / 77	136 / 409	50 / 148	36 / 150
OR crude		0.20 (0.09-0.44)	0.42 (0.24-0.74)	0.42 (0.23-0.78)	0.80 (0.57-1.13)	0.82 (0.53-1.27)	0.51 (0.32-0.81)
OR age/sex adj		0.20 (0.09-0.45)	0.41 (0.24-0.72)	0.43 (0.23-0.79)	0.80 (0.57-1.13)	0.82 (0.53-1.27)	0.51 (0.32-0.82)
OR fully adj		0.21 (0.10-0.48)	0.43 (0.24-0.78)	0.47 (0.24-0.89)	0.83 (0.57-1.21)	0.96 (0.59-1.55)	0.46 (0.28-0.76)
N remission	19 / 214	1 / 72	5 / 101	2 / 77	26 / 409	7 / 148	10 / 150
OR crude		0.15 (0.02-1.14)	0.55 (0.20-1.55)	0.29 (0.06-1.26)	0.69 (0.37-1.28)	0.52 (0.21-1.29)	0.72 (0.32-1.60)
OR age/sex adj		0.19 (0.02-1.44)	0.61 (0.21-1.72)	0.36 (0.08-1.59)	0.71 (0.38-1.34)	0.59 (0.23-1.48)	0.76 (0.34-1.71)
OR fully adj		0.17 (0.02-1.35)	0.77 (0.25-2.40)	0.43 (0.09-2.05)	0.80 (0.39-1.64)	0.77 (0.28-2.12)	0.51 (0.21-1.24)

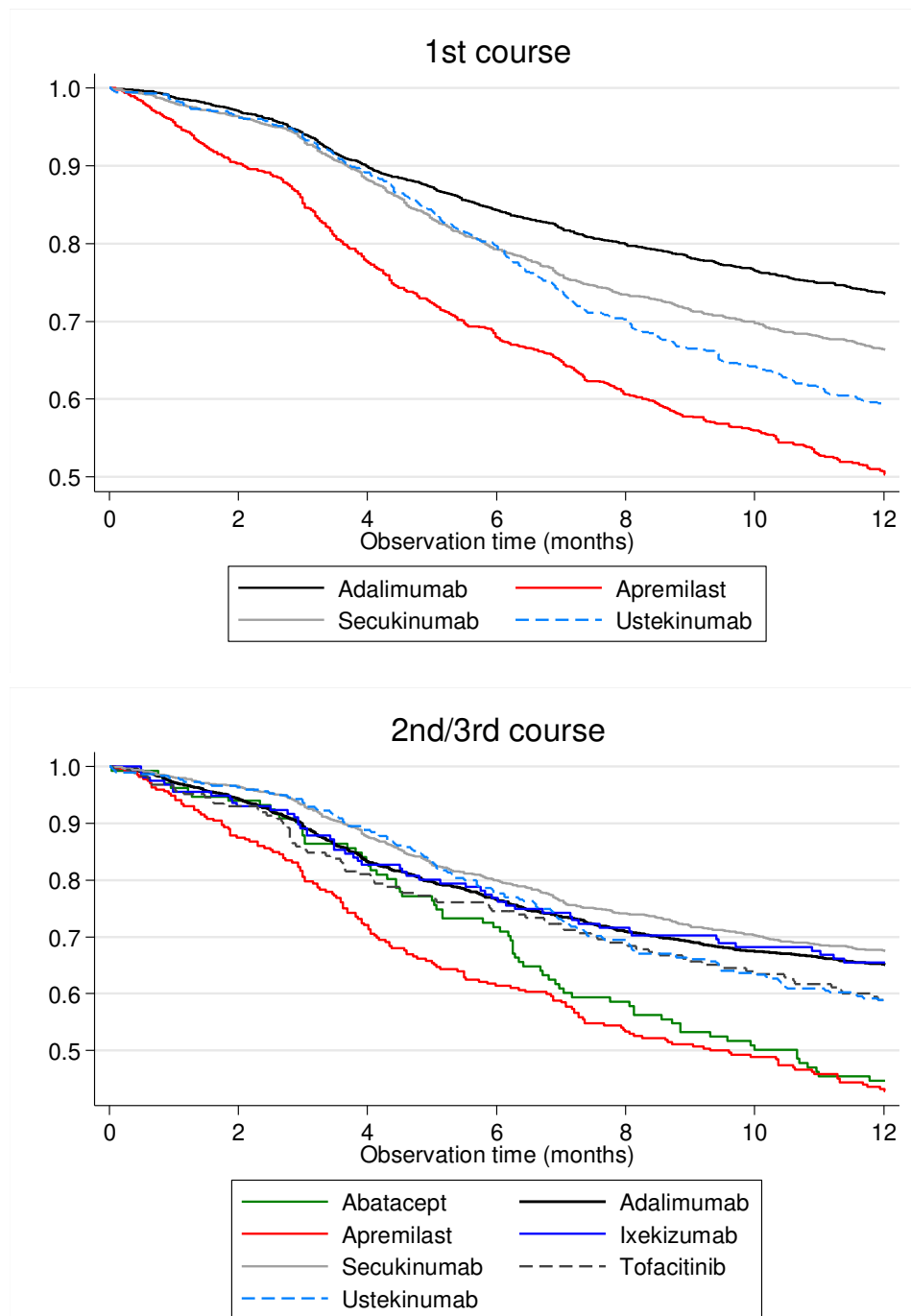
Supplementary table S6. Retention rate (with HR) and OR of attaining LDA and remission in patients previously failing at least one TNFi due to inefficacy

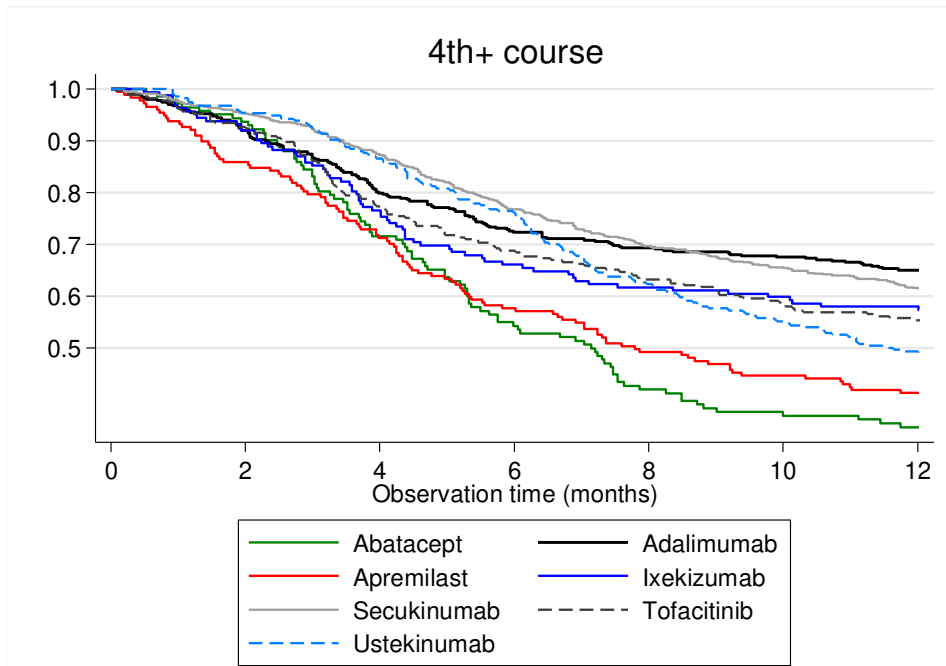
Is not presented for 2nd/3rd course abatacept, ixekizumab and tofacitinib due to few treatment starts

	Adalimumab	Abatacept	Apremilast	Ixekizumab	Secukinumab	Tofacitinib	Ustekinumab
2nd/3rd course							
N	1040	69	114	83	588	98	161
Retention Rate	0.62 (0.59-0.65)	-	0.39 (0.30-0.48)	-	0.66 (0.62-0.70)	-	0.54 (0.46-0.61)
HR crude		-	2.02 (1.55-2.63)	-	0.82 (0.70-0.98)	-	1.18 (0.93-1.49)
HR adj		-	1.99 (1.49-2.66)	-	0.86 (0.71-1.03)	-	1.08 (0.84-1.39)
N remission	116 (105-131)/1039	4 (2-9)/69	3 (0-9)/114	3(1-8)/83	61 (53-71)/587	6 (4-10)/98	12 (7-17)/161
OR crude		-	-	-	0.90 (0.61-1.32)	-	0.60 (0.26-1.36)
OR age/sex adj		-	-	-	0.89 (0.60-1.31)	-	0.62 (0.27-1.42)
OR fully adj		-	-	-	1.01 (0.64-1.57)	-	0.91 (0.39-2.12)
N LDA	422 (394-455)/1039	11 (7-18)/69	14 (8-20)/114	26 (19-34)/83	243 (219-263)/587	33 (28-41)/98	44 (35-51)/161
OR crude		-	0.21 (0.09-0.45)	-	1.03 (0.81-1.31)	-	0.56 (0.36-0.87)
OR age/sex adj		-	0.21 (0.10-0.46)	-	1.02 (0.80-1.30)	-	0.56 (0.36-0.88)
OR fully adj		-	0.20 (0.09-0.46)	-	1.08 (0.82-1.42)	-	0.69 (0.43-1.10)
4th+ course							
N	318	103	144	142	605	229	213
Retention Rate	0.65 (0.60-0.70)	0.30 (0.22-0.40)	0.42 (0.34-0.50)	0.60 (0.51-0.67)	0.62 (0.58-0.66)	0.56 (0.50-0.62)	0.46 (0.40-0.53)
HR crude		2.50 (1.83-3.43)	1.94 (1.43-2.64)	1.18 (0.85-1.63)	1.05 (0.83-1.31)	1.27 (0.97-1.67)	1.55 (1.18-2.02)
HR adj		2.60 (1.87-3.61)	1.84 (1.34-2.53)	1.16 (0.83-1.62)	1.00 (0.79-1.26)	1.26 (0.95-1.68)	1.58 (1.20-2.09)
N remission	22 (16-33)/318	2 (0-9)/103	6 (3-10)/144	4 (2-8)/142	36 (26-43)/604	8 (5-13)/226	16 (12-20)/213
OR crude		-	0.57 (0.16-2.10)	0.41 (0.09-1.88)	0.85 (0.41-1.75)	0.50 (0.18-1.39)	1.06 (0.45-2.51)
OR age/sex adj		-	0.62 (0.17-2.28)	0.46 (0.10-2.12)	0.90 (0.43-1.88)	0.57 (0.21-1.60)	1.12 (0.46-2.69)
OR fully adj		-	0.64 (0.16-2.58)	0.53 (0.10-2.70)	1.01 (0.45-2.27)	0.68 (0.21-2.16)	1.13 (0.42-3.00)
N LDA	112 (101-120)/318	10 (7-16)/103	27 (20-33)/144	36 (29-46)/142	191 (177-203)/604	75 (65-83)/226	48 (41-55)/213
OR crude		0.18 (0.07-0.48)	0.43 (0.23-0.77)	0.63 (0.35-1.11)	0.85 (0.61-1.20)	0.91 (0.59-1.41)	0.54 (0.33-0.87)
OR age/sex adj		0.19 (0.07-0.50)	0.43 (0.23-0.78)	0.64 (0.36-1.14)	0.87 (0.62-1.22)	0.93 (0.60-1.44)	0.54 (0.33-0.88)
OR fully adj		0.19 (0.07-0.51)	0.41 (0.21-0.79)	0.72 (0.38-1.34)	0.90 (0.63-1.29)	1.07 (0.66-1.73)	0.54 (0.32-0.92)

Supplementary figure 1. Kaplan-Meier curves of one-year treatment retention, presented by line of treatment.

Not presented for first course abatacept, ixekizumab and tofacitinib due to few treatment starts





Supplementary figure S2. Comparison of proportion of patients achieving DAPSA28 LDA or remission at 6 months in the imputed dataset and in complete case analyses, presented by course of treatment.

Vertical lines illustrate min-max in imputed datasets. Not presented for first course abatacept, ixekizumab and tofacitinib due to few treatment starts

