



OPEN ACCESS

EPIDEMIOLOGICAL SCIENCE

Risk factors for serious infections in ANCA-associated vasculitis

Balazs Odler,^{1,2} Regina Riedl,³ Philipp Gauckler ,⁴ Jae Il Shin,⁵ Johannes Leierer,⁴ Peter A Merkel,⁶ William St. Clair,⁷ Fernando Fervenza,⁸ Duvuru Geetha ,⁹ Paul Monach,¹⁰ David Jayne ,¹ Rona M Smith,¹ Alexander Rosenkranz,² Ulrich Specks,¹¹ John H Stone ,¹² Andreas Kronbichler ,¹ RAVE–ITN Research Group

Handling editor Josef S Smolen

► Additional supplemental material is published online only. To view, please visit the journal online (<http://dx.doi.org/10.1136/ard-2022-223401>).

For numbered affiliations see end of article.

Correspondence to

Dr Andreas Kronbichler, Department of Medicine, University of Cambridge, Cambridge CB2 1TN, UK; ak2283@cam.ac.uk

Received 26 September 2022

Accepted 6 January 2023

Published Online First

26 January 2023

ABSTRACT

Objectives Severe infections contribute to morbidity and mortality in antineutrophil cytoplasm antibody-associated vasculitis (AAV). This study aimed to identify risk factors associated with severe infections in participants of the Rituximab versus Cyclophosphamide for ANCA-Associated Vasculitis (RAVE) trial.

Methods Data on 197 patients recruited into the RAVE trial were analysed. Participants received either rituximab (RTX) or cyclophosphamide (CYC), followed by azathioprine (AZA). Clinical and laboratory data of patients with and without severe infections (\geq grade 3, according to the Common Terminology Criteria for Adverse Events version 3.0) were compared. Risk factors for severe infections were investigated using Cox-regression models.

Results Eighteen of 22 (82%) severe infections occurred within 6 months after trial entry, most commonly respiratory tract infections (15/22, 68%). At baseline, lower absolute numbers of CD19+ cells were observed in patients with severe infections either receiving RTX or CYC/AZA at baseline, while CD5+B and CD3+T cells did not differ between groups. In Cox-regression analysis, higher baseline serum immunoglobulin M levels were associated with the risk of severe infections, whereby a higher baseline total CD19+B cell number and prophylaxis against *Pneumocystis jirovecii* with trimethoprim-sulfamethoxazole (TMP/SMX) with decreased risk of severe infections. Use of TMP/SMX was associated with lower risk of severe infections in both groups, receiving either RTX or CYC/AZA.

Conclusions The use of low-dose TMP/SMX is associated with reduced risk of severe infections in patients with AAV treated with either RTX or CYC/AZA. Reduced B cell subpopulations at start of treatment might be a useful correlate of reduced immunocompetence.

INTRODUCTION

The therapeutic landscape in anti-neutrophil cytoplasm antibody (ANCA)-associated vasculitis (AAV) has been expanded during the last decades, including the approval of rituximab (RTX) in the induction of remission of active granulomatosis with polyangiitis (GPA) and microscopic polyangiitis (MPA). The Rituximab versus Cyclophosphamide

WHAT IS ALREADY KNOWN ON THIS TOPIC

- ⇒ Severe infections are the leading cause of death within the first year of diagnosis. Risk factors for severe infections are mainly derived from retrospective analysis, while data from randomised controlled trials are limited.
- ⇒ Prior analyses focused on cyclophosphamide (CYC)-treated patients, but one retrospective study on patients treated with rituximab (RTX) found a reduced frequency of severe infections when trimethoprim-sulfamethoxazole (TMP/SMX) was used as prophylaxis against *Pneumocystis jirovecii*.

WHAT THIS STUDY ADDS

- ⇒ This study used data from a randomised clinical trial to demonstrate the effectiveness of treatment with low-dose TMP/SMX in patients with antineutrophil cytoplasm antibody-associated vasculitis (AAV), who received RTX or CYC/azathioprine to reduce the incidence of severe infections. TMP/SMX may exhibit additional beneficial effects on respiratory tract infections beyond preventing *Pneumocystis jirovecii* pneumonia.
- ⇒ At the initiation of treatment, a lower CD19+B cell number is associated with a higher risk of severe infections.

HOW THIS STUDY MIGHT AFFECT RESEARCH, PRACTICE OR POLICY

- ⇒ These findings indicate that the use of extended courses of TMP/SMX may be considered in patients with AAV to prevent severe infections during the induction of remission of vasculitis if favourable risk and benefit is confirmed by future studies.
- ⇒ The results suggest that baseline B cell subpopulations might be a potential marker of immunocompetence.

for ANCA-Associated Vasculitis (RAVE) trial found non-inferiority in the induction of remission of RTX to cyclophosphamide (CYC) as an agent to induce remission and azathioprine (AZA) to maintain remission.^{1 2} During the follow-up period of 6 months, a number of serious infections, defined as



© Author(s) (or their employer(s)) 2023. Re-use permitted under CC BY. Published by BMJ.

To cite: Odler B, Riedl R, Gauckler P, et al. *Ann Rheum Dis* 2023;**82**:681–687.

National Cancer Institute (NCI) Common Terminology Criteria for Adverse Events (CTCAE) version 3, were balanced between the groups.¹ Moreover, during the extended follow-up of up to 18 months, the number of trial participants with at least one serious infection also remained balanced between the therapy arms.

Infections are a major contributor to morbidity and mortality of patients with AAV.^{3,4} In the first year of diagnosis, infections are the main cause of death, while infectious complications remain the leading contributing factor to mortality thereafter.⁵ Most risk factors predicting severe infections have been proposed in individuals receiving CYC as induction therapy, including leucopaenia, lymphopaenia, lung disease, severe kidney function impairment and older age,⁶ while more recent data confirmed the association of severe infections and age as well as lung disease in patients receiving RTX.⁷ The use of trimethoprim-sulfamethoxazole (TMP-SMX) in a prophylactic dose to prevent *Pneumocystis jirovecii* pneumonia (PJP), however, reduced the risk of serious infections in patients treated with RTX.⁷

This ancillary study to RAVE analysed risk factors of severe infections reported in the trial for all patients and the two treatment subgroups. The aim of the study was to identify risk factors associated with severe infections in participants of the RAVE trial, including the impact of different prophylactic measures to prevent PJP, and the changes of immune cell subsets ('immunocompetence', ie, CD19+ cells at baseline and repopulation after therapy) on the risk to develop serious infectious complications.

METHODS

Study participants and treatment regimens

Data from the RAVE trial^{1,2} were used for this post hoc analysis. Briefly, the RAVE trial was a multicentre, double-blind, randomised, controlled trial that randomised 197 ANCA positive participants in a 1:1 ratio to receive either RTX (N=99, 375 mg/m² each week for 4 weeks) or daily oral CYC (N=98, 2 mg/kg, adjusted for kidney function for 3–6 months) followed by a maintenance therapy with AZA (2 mg/kg, up to 150 mg/day). Patients in both groups received the same glucocorticoid (GC) protocol consisting of 1–3 days intravenous methylprednisolone pulses, followed by prednisone taper with scheduled discontinuation by 6 months in case remission was achieved without disease flares. Methylprednisolone could be administered during the screening/randomisation period and the baseline evaluations had to be completed within 14 days of the first dose of RTX/placebo, that means that some patients received methylprednisolone pulses before study medication was started. Participants in both groups received daily prophylaxis against PJP with single-strength or double-strength TMP/SMX, or dapsone (100 mg/day) or atovaquone (750 mg two times per day) if allergies were present. As stated in the study protocol, PJP prophylaxis was continued while participants were receiving study medications, GC or other immunosuppressive drugs under best medical judgement. Participants treated with open-label RTX had to undergo PJP prophylaxis for 6 months after their last RTX infusion.¹² All patients provided consent for the use of both clinical and laboratory data collected during the trial and for subsequent ancillary studies.

Definition of severe infections

Infections were collected during the entire clinical trial and defined by the NCI CTCAE version 3.0. Infections graded 3 or higher were considered severe infections, and grades 1 or 2 as mild infections. The analysis included severe infections due to

possibly lacking data on mild infections not necessitating additional medical treatment and a general under-reporting in clinical practice. Infection sites were grouped as respiratory tract (RTI), gastrointestinal (GI), urinary tract (UTI) and other infections.

Clinical data

The following data were obtained: age, gender, weight, height, body mass index, Birmingham Vasculitis Activity Score/WG at baseline, ANCA serotype (anti-myeloperoxidase (MPO) or anti-proteinase 3 (PR3)), disease phenotype (GPA, MPA), disease flare extent (limited or severe), organ involvement (kidney, skin, eye, subglottic, lung, ear, nose and throat, heart, peripheral nervous, sensorineural deafness), fever (>38°C), arthralgia or pulmonary haemorrhage, data on new diagnosis or relapsing disease, immunosuppressive therapy (methylprednisolone bolus, cumulative doses of GC, CYC and RTX) and use of antibiotics as prophylaxis against PJP (TMP-SMX, dapsone, atovaquone and no prophylaxis). Laboratory data included serum creatinine, white cell count, leucocyte count, total Ig and Ig isotypes (IgA, IgG, IgM) and data on B and T cell subsets (CD3, CD5, CD19) at different study time points.

Statistical analysis

Continuous parameters are summarised as the median and range (minimum, maximum) and categorical parameters are presented as absolute and relative frequencies. Characteristics at baseline and CD3, CD5 and CD19 at different study time points were compared between patients with severe infections and no severe infection by Mann-Whitney U and Fisher's exact test. To evaluate risk factors for first severe infection within 18 months after therapy started, univariable Cox proportional hazard regression analyses were performed. In a multivariable Cox regression model, all parameters with a $p < 0.1$ in univariable analysis were included and backward selection was used in the final model. Results are presented as HRs with corresponding 95% CIs. All analyses were performed for the whole cohort and stratified for the treatment groups (RTX and CYC/AZA), except for the multivariable analysis due to the small number of events. Additionally, Kaplan-Meier curves for infection-free survival are presented for patients with and without use of TMP/SMX. Missing data were not imputed. A $p < 0.05$ was considered statistically significant. The results are interpreted exploratory and no correction for multiple testing was performed. All analyses were performed by using SAS V.9.4 (SAS Institute).

RESULTS

Baseline patient characteristics stratified by infectious complications

There were twenty-two patients with at least one severe infection within the first 18 months of the trial. Median follow-up time was 531 days (2–581 days). Baseline characteristics between patients with and without severe infections were similar; however, more patients without severe infection received prophylaxis against PJP with TMP/SMX (94% vs 73%, $p = 0.005$). At least one dose of methylprednisolone was administered in 180 (91.4%) of randomised patients. Two severe infections (6.3%) occurred in 32 patients receiving a total of ≥ 3000 mg of methylprednisolone. In addition, patients with a severe infection had lower median CD19+B cell number at baseline (total cell number; 120.5/ μ L (range 12.3–759.1) vs 219.1/ μ L (range 2.4–1282.1), $p = 0.001$) (table 1). Relapsing patients had a lower CD19+B cell number at baseline (173.5/ μ L (range 2.4–1282.1) vs 219.1/ μ L (range 24.9–1279.8), $p = 0.012$), while there was no difference

Table 1 Baseline characteristics of patients without and with severe infections

	Patients without severe infections (N=175)	Patients with severe infections (N=22)	P value
Age (years)	53 (15–92)	52 (30–80)	0.863
Female sex	87 (50)	10 (46)	0.822
BMI (kg/m ²)	27.6 (15.7–51.7)	28.3 (21.8–41.3)	0.290
Baseline BVAS/WG (overall score)	8 (3–23)	8 (3–16)	0.397
Diagnosis at enrollment			
Newly diagnosed at enrollment	89 (51)	7 (32)	0.115
Relapsing disease	86 (49)	15 (68)	
Disease phenotype			
GPA	131 (75)	16 (73)	0.300
MPA	43 (25)	5 (23)	
Indeterminate	1 (1)	1 (5)	
ANCA serotype			
PR3	118 (67)	13 (59)	0.476
MPO	57 (33)	9 (41)	
Pulmonary haemorrhage	47 (27)	4 (18)	0.450
Organ involvement			
Kidney	116 (66)	15 (68)	1
Lung	80 (46)	80 (46)	0.498
Heart	1 (1)	0 (0)	1
Ear, nose and throat	97 (55)	11 (50)	0.656
Mucous membranes and eyes	40 (23)	6 (27)	0.603
Cutaneous	31 (18)	3 (14)	0.772
Severe disease flare	39 (22)	2 (9)	0.262
Use of TMP/SMX			
Use of dapsone	6 (3)	5 (23)	0.005
Use of atovaquone	1 (1)	1 (5)	
None	4 (2)	0 (0)	
Laboratory results			
Creatinine (mg/dL)	1.1 (0.5–4.2)	1.2 (0.7–3.1)	0.594
Lymphocytes (/μL)	1300 (300–12200)	1400 (500–3900)	0.933
WCC (/μL)	11.2 (2.3–25.8)	11.9 (4.6–26.9)	0.887
Total Ig (mg/dL)	1174 (409–3101)	1203 (580–2008)	0.619
IgA (mg/dL)	153 (14–882)	188 (49–289)	0.357
IgG (mg/dL)	907 (322–2598)	907 (493–1585)	0.935
IgM (mg/dL)	84 (16–271)	86 (29–716)	0.595
Total CD3+T cells	729 (49–3656)	751 (51–2577)	0.246
Total CD19+B cells	219 (2–1282)	121 (12–759)	0.001
Total CD5+B cells	17 (0–422)	10 (1–139)	0.259

Continuous variables are expressed as median (minimum and maximum). Categorical variables are n (%).

ANCA, antineutrophil cytoplasmic antibody; BMI, body mass index; BVAS, Birmingham Vasculitis Activity Score; GPA, granulomatosis with polyangiitis; MPA, microscopic polyangiitis; MPO, myeloperoxidase; PR3, proteinase 3; TMP/SMX, trimethoprim-sulfamethoxazole; WCC, white cell count.

whether patients were exposed to CYC before enrolment into the RAVE trial or not (154.3/μL (range 2.4–1282.1) vs 203.8/μL (range 32.1–655), $p=0.274$) (online supplemental table 1). Fifteen (68.2%) out of 22 severe infections occurred in relapsing patients at baseline. Among those patients, 12 (80%) received therapy with immunosuppression/cytotoxic agent before trial inclusion. Further patient characteristics are summarised in table 1, while differences in patients receiving either RTX or CYC/AZA and patients with and without TMP/SMX use are shown in online supplemental tables 2 and 3.

Characteristics of severe infections

The most common infections were RTI (15/22, 68.2%), followed by GI (1/22, 4.6%), UTI (1/22, 4.6%) and other infections (5/22, 22.7%, figure 1). Other infections included joint and skin infections as well as abdominal abscess, neutropenic fever

and poststreptococcal glomerulonephritis. Most of the severe infections were grade 3 (18/22, 81.8%), with a grade 4 infection recorded in 3 (13.6%) patients, and a grade 5 infection in 1 patient (1/22, 2.1%). Eighteen of 22 (81.8%) severe infections occurred within 6 months after trial entry. During the whole study period the median time to the first severe infection was 85 days (range: 2–513). Patients in the CYC/AZA group experienced a severe infectious complication earlier as compared with those in the RTX group (39 (13–414) vs 126 (2–513) days, respectively, $p=0.076$).

Predictors of severe infections

Univariable Cox regression analysis was performed to identify clinical and laboratory predictors of severe infectious complications during the study period (online supplemental table 4). Total CD19+Bcell number, serum IgM and TMP/SMX prophylaxis

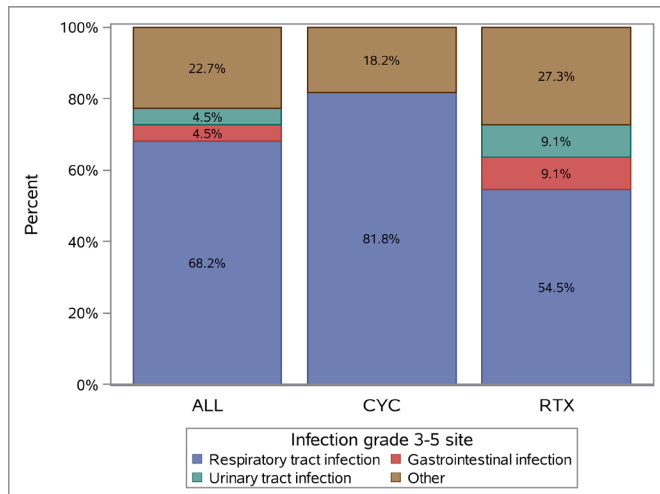


Figure 1 The distribution of severe infection sites in the whole study cohort. CYC, cyclophosphamide; RTX, rituximab.

were significantly associated with severe infections and were thus included into the multivariable analysis. In the multivariable analysis, higher baseline serum IgM levels were associated with increased risk of severe infections (HR: 1.005; 95% CI: 1.002 to 1.009; $p=0.006$), whereby a higher baseline total CD19⁺ B cell number (HR: 0.995, 95% CI: 0.991 to 0.999; $p=0.011$) and TMP/SMX prophylaxis (HR: 0.232; 95% CI: 0.087 to 0.623; $p=0.004$; **figure 2A**) with decreased risk of severe infections. Results of the multivariable analysis are shown in **table 2**.

Use of TMP/SMX and risk of severe infections

Seventeen patients (8.6%) did not receive TMP/SMX as prophylaxis against PJP (ie, for lack of compliance or having other prophylactic measures). Among these, six patients (35.3% in total; 3 in the RTX and CYC/AZA arms each, respectively) experienced a severe infection. The use of TMP/SMX remained associated with a lower risk of severe infections in both treatment subgroups (RTX or CYC/AZA): (HR: 0.204; 95% CI: 0.054 to 0.772; $p=0.019$ and HR: 0.232; 95% CI: 0.061 to 0.884; $p=0.032$; respectively; **figure 2B,C**).

T and B cell subsets and risk of severe infections in follow-up

Data on peripheral CD3+T cells, as well as CD19+ and CD5+ B cells were analysed at baseline and during the first 6 months of follow-up. Patients with severe infections had a lower total number of CD19+B cells at baseline (as described previously; **table 1**) and tended to have lower CD5+B cells at month 1 (0.7/ μ L (range: 0.0–10.5) vs 1.9/ μ L (range: 0.0–108.3); $p=0.053$;

Table 2 Multivariable COX regression analysis of predictors of severe infections

Covariate	HR	95% CI	P value
Total CD19 ⁺ B cells	0.995	0.991 to 0.999	0.011
Serum IgM	1.005	1.002 to 1.009	0.006
Use of TMP/SMX	0.232	0.087 to 0.623	0.004

TMP/SMX, trimethoprim-sulfamethoxazole.

figure 3A,B), while CD3+T cells did not differ between groups. A lower total number of CD19+B cells at baseline and at month one was observed in patients with severe infections compared to patients without severe infections in the RTX arm (114.8/ μ L (range: 25.7–759.1) vs 276.7/ μ L (range: 14.0–1282.1); $p=0.022$ and 0.6/ μ L (range: 0.2–3.5) vs 1.9/ μ L (range: 0.0–273.0); $p=0.005$; respectively; **figure 3A**), while no differences in the CD5+B cells and CD3+T cells were observed. In the CYC/AZA arm, patients with severe infections had lower total number of CD19+B cells at baseline and month 1 (128.7/ μ L (range: 12.3–207.7) vs 193.6 (range: 2.4–977.4); $p=0.023$ and 25.0/ μ L (range: 7.5–81.7) vs 72.0 (range: 4.2–472.7); $p=0.011$; respectively; **figure 3A**), as well as CD5+B cells at week two after therapy initiation (4.8/ μ L (range: 0.8–15.5) vs 11.7/ μ L (range: 0–508.7); $p=0.032$ **figure 3B**). Additionally, a tendency to lower total number of CD3+T cells at baseline and week two were observed in the CYC/AZA study group ($p=0.095$ and $p=0.069$; respectively).

DISCUSSION

Using data from the RAVE trial, this study identified independent clinical and immunologic predictors associated with severe infections in patients with AAV. Patients treated with either GCs and RTX or CYC/AZA without use of TMP/SMX for prophylaxis against PJP were more likely to experience severe infections, especially within the first 6 months after initiation of therapy. Furthermore, a lower absolute number of CD19+ in both therapeutic arms at baseline predicted serious infections.

Since infections are one of the leading causes of death in patients with AAV,^{3 4 8 9} strategies to prevent or minimise infections are of importance. Several international guidelines on management of AAV recommend prophylaxis against PJP infection in patients receiving either RTX or CYC.^{10–15} Nevertheless, most of these recommendations are based on data from observational studies. This post hoc analysis of the RAVE trial is the first analysis of data derived from a randomised controlled trial providing evidence for the role of low-dose TMP/SMX in preventing severe infections in patients with AAV. These results reveal a significant benefit in patients receiving either RTX or

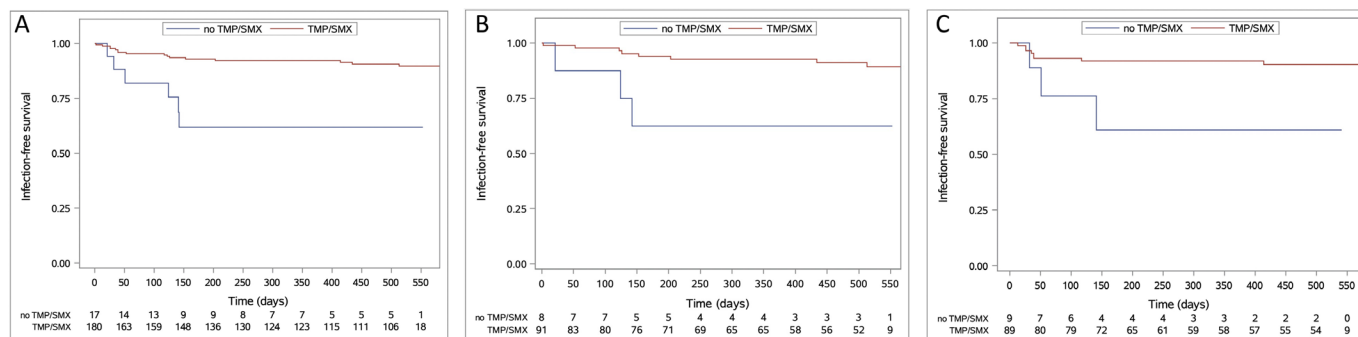


Figure 2 Kaplan-Meier curves for infection-free survival in patients receiving trimethoprim-sulfamethoxazole (TMP/SMX) prophylaxis in the whole study cohort (A) and stratified by treatment regimen (B) rituximab; (C) cyclophosphamide/azathioprine.

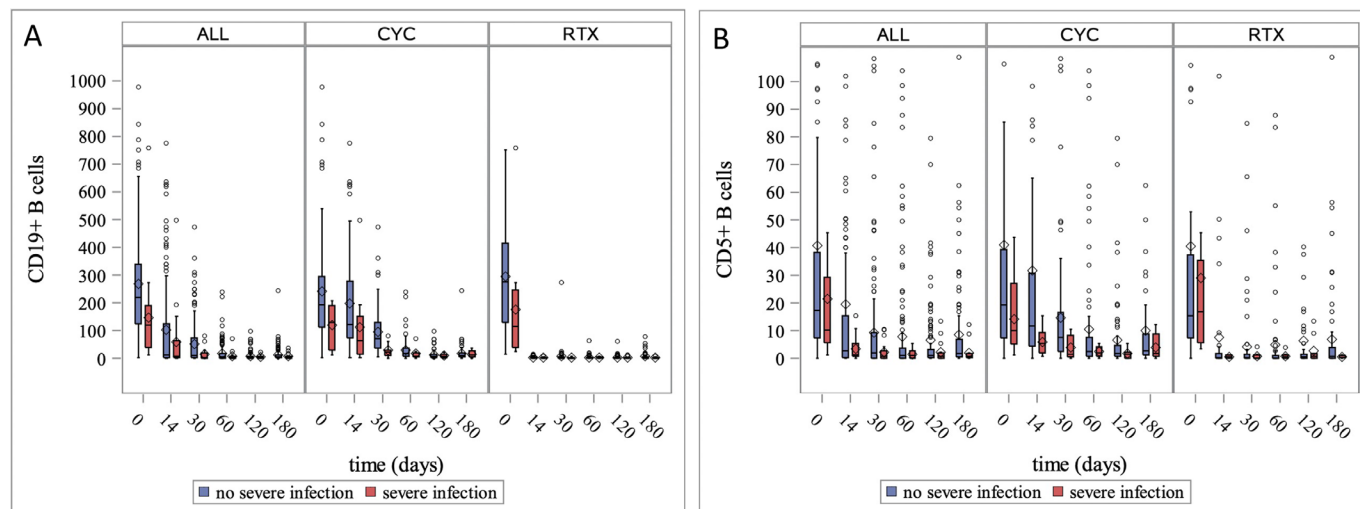


Figure 3 Box plots for peripheral CD19+ (A) and CD5+ (B) B cells during the first 180 days after therapy initiation in the whole study cohort and stratified by treatment regime. Diamond indicates the mean value.

CYC/AZA. A retrospective analysis found that the prophylactic use of TMP/SMX was associated with a lower rate of severe infection in patients receiving RTX.⁷ In addition, a recent study by Waki *et al* reported similar protective effects of TMP/SMX on serious infections within the first 6 months of follow-up, however, differences in therapy modalities discriminating CYC and RTX were not analysed.¹⁶ In both studies, RTI were the most frequent infectio (68.4% and 33.3%; respectively), including a low incidence of PJP (1/69 and 2/15 of the reported RTI; respectively), which is consistent with the current analysis (15/22, 68% RTI; 1/15 (7%) with a PJP infection). These results suggest that the use of TMP/SMX may exhibit additional beneficial effects on RTI beyond preventing PJP. In the RAVE trial, single-strength or double-strength TMP/SMX was given as long as patients received study medications, including GC or other immunosuppressive therapy under best medical judgement.¹² Since most of the infections occurred in the first 6 months after therapy initiation, withdrawal after cessation of immunosuppression may be useful as the risk of severe adverse events possibly associated with the use of TMP/SMX is substantial.^{17 18} Nevertheless, a randomised controlled trial addressing this question is necessary, that is, looking at differences of prophylaxis prescribed for 6 months in comparison to a prolonged prescription during long-term follow-up.

Analysis of risk factors predicting infectious complications has been performed, mainly in observational studies, where various clinical and serological prognostic factors have been reported.^{6 19–23} In the RAVE cohort, baseline serum IgM levels and total number of CD19+B cells were independently associated with severe infections in the multivariable analysis. Serum IgM is the first antibody secreted after exposure to foreign antigens and is effective at engaging complement to pathogens.²⁴ Patients with selective IgM deficiency are prone to develop serious infections and autoimmune conditions.²⁴ Among patients with AAV, serum IgM hypogammaglobulinaemia after therapy with RTX is well described. Nonetheless, conflicting evidence exists whether or not low serum IgM levels are associated with severe infections in AAV. In our cohort, a higher serum level of IgM was associated with the risk of severe infections. The interpretation of this finding is speculative and further studies are necessary to characterise this potential association in detail, including serial measurements of IgM serum levels, and especially measurement of IgM at the time of infection rather than at

baseline. The observed association between severe infections and baseline total CD19+B cell number was not unexpected. Importantly, it might draw further attention to careful monitoring of patients with AAV who initially have low CD19+B cells irrespective of the modality of induction regime used. In addition, soluble immune checkpoints (sCD27, sTim-3 and sBTLA) predicted infectious complications and relapses,²⁵ and the combination of baseline CD19+B cells with those biomarkers may be more accurate to predict severe infections and future relapses, especially in patients receiving RTX as a remission induction therapy. Together, these markers might be used to monitor immunocompetence of individuals at baseline and may help to tailor immunosuppression.

The administration of intravenous methylprednisolone was protocolised in the RAVE trial and reasons that no methylprednisolone was administered in 17 patients remain obscure. Only two patients with a total dose of ≥ 3000 mg of methylprednisolone had a severe infection. Further analyses of methylprednisolone dosing might be biased as patients at risk to develop severe infections (ie, with diabetes mellitus, or older age) might only have received one pulse and this strategy was most frequently used in the RAVE trial. In general, a reduced-dose GC protocol as used in the PEXIVAS,²⁶ LoVAS²⁷ and RITAZAREM²⁸ trials seems to be favourable in terms of reduction of severe infections.

The effect of CYC on B cell subpopulations has been previously described. Zhu *et al* found a selective suppression of B cell function in a small cohort of vasculitis patients²⁹ who were treated with low dose CYC. In patients with AAV receiving CYC, a depletion of especially naïve B cells was described.³⁰ The current study results revealed lower total CD19+ and CD5+ B cell numbers during the first month after therapy initiation in patients treated by CYC. These results suggest that CYC therapy does not lead to a permanent loss of humoral immunity, nevertheless the assessment of B cell subpopulations before therapy initiation and early thereafter might be useful to identify patients with AAV at higher risk for severe infections irrespective of treatment regimen.

This study has certain limitations. The relatively low number of severe infections observed during the study period may lead to underestimation of certain prognostic factors for infectious complications. Moreover, the duration and potential adverse events related to the use of TMP/SMX were not recorded in detail and most side effects such as liver function abnormalities

or cytopaenias might also occur with other prescribed therapies. Despite these limitations, this study provides important data on severe infectious complications among AAV patients followed in a randomised controlled trial.

In conclusion, this study demonstrates that the use of TMP/SMX as prophylaxis against PJP is significantly associated with reduced risk of severe infections in patients with AAV, independent of the choice of the therapy used to induce remission. These data further suggest that certain B cell subpopulations may serve as a useful tool to determine general immunocompetence of AAV patients, and to identify individuals at higher risk of infectious complications. T results warrant independent confirmation in future studies, with a special focus on ideal duration of TMP/SMX prophylaxis, and exploration of a similar impact of TMP/SMX in the management of patients with other autoimmune diseases.

Author affiliations

- ¹Department of Medicine, University of Cambridge, Cambridge, UK
- ²Division of Nephrology, Department of Internal Medicine, Medical University of Graz, Graz, Austria
- ³Institute for Medical Informatics, Statistics and Documentation, Medical University of Graz, Graz, Austria
- ⁴Department of Internal Medicine IV, Nephrology and Hypertension, Medical University Innsbruck, Innsbruck, Austria
- ⁵Yonsei University College of Medicine and Severance Children's Hospital, Seoul, Republic of Korea
- ⁶Division of Rheumatology, University of Pennsylvania, Philadelphia, Pennsylvania, USA
- ⁷Division of Rheumatology and Immunology, Duke University, Durham, North Carolina, USA
- ⁸Division of Nephrology and Hypertension, Mayo Clinic, Rochester, Minnesota, USA
- ⁹Division of Nephrology, Johns Hopkins University, Baltimore, Maryland, USA
- ¹⁰VA Boston Healthcare System, West Roxbury, Massachusetts, USA
- ¹¹Division of Pulmonary and Critical Care Medicine, Mayo Clinic, Rochester, Minnesota, USA
- ¹²Division of Rheumatology Allergy, and Immunology, Massachusetts General Hospital, Harvard Medical School, Boston, Massachusetts, USA

Acknowledgements We thank all the patients who participated in the RAVE trial. Balazs Odler is a postdoctoral research fellow at the University of Cambridge supported by the Austrian Science Fund (FWF). David Jayne is supported by the NIHR Cambridge Biomedical Research Centre.

Contributors All authors have contributed significantly to data acquisition. Statistical analyses were performed by RR, JIS together with the authors extracting raw data (BO, PG, JL and AK). The RAVE trial authors recruited patients and were responsible for trial design. AK is the guarantor.

Funding This research was funded in whole, or in part, by the Austrian Science Fund (FWF) (grant number: J 4664-B for Balazs Odler).

Competing interests BO received speaker fees and travel support from Otsuka. Fernando Fervenza reports receiving research grants from Genentech. PG reports receiving speaker fees from Otsuka and consulting fees from Vifor Pharma, UriSalt and Delta4. DG received consulting fees from ChemoCentryx, Aurinia and GSK. DJ has received research grants, consultancy or lecture fees from Amgen, Astra-Zeneca, BMS, Boehringer-Ingelheim, Chemocentryx, GSK, Kessai, NICE, Novartis, Otsuka, Roche/Genentech, Takeda, UCB and Vifor. AK reports receiving research grants from Vifor Pharma and Otsuka, speaking fees from Vifor Pharma, and Terumo BCT, and consulting fees from Vifor Pharma, Otsuka, UriSalt, Delta4 and Catalyst Biosciences.

Patient and public involvement Patients and/or the public were not involved in the design, or conduct, or reporting, or dissemination plans of this research.

Patient consent for publication Consent obtained directly from patient(s).

Ethics approval This study was approved by the IRB of the trial sites. Ethics was obtained from the trial sites, Immune Tolerance Network, Bethesda, Maryland. Participants gave informed consent to participate in the study before taking part.

Provenance and peer review Not commissioned; externally peer reviewed.

Data availability statement Data are available in a public, open access repository. Data are available on itrialsshare.org.

Supplemental material This content has been supplied by the author(s). It has not been vetted by BMJ Publishing Group Limited (BMJ) and may not have been peer-reviewed. Any opinions or recommendations discussed are solely those

of the author(s) and are not endorsed by BMJ. BMJ disclaims all liability and responsibility arising from any reliance placed on the content. Where the content includes any translated material, BMJ does not warrant the accuracy and reliability of the translations (including but not limited to local regulations, clinical guidelines, terminology, drug names and drug dosages), and is not responsible for any error and/or omissions arising from translation and adaptation or otherwise.

Open access This is an open access article distributed in accordance with the Creative Commons Attribution 4.0 Unported (CC BY 4.0) license, which permits others to copy, redistribute, remix, transform and build upon this work for any purpose, provided the original work is properly cited, a link to the licence is given, and indication of whether changes were made. See: <https://creativecommons.org/licenses/by/4.0/>.

ORCID iDs

- Phillip Gauckler <http://orcid.org/0000-0002-5964-0307>
 Duvuru Geetha <http://orcid.org/0000-0001-8353-5542>
 David Jayne <http://orcid.org/0000-0002-1712-0637>
 John H Stone <http://orcid.org/0000-0001-6588-9435>
 Andreas Kronbichler <http://orcid.org/0000-0002-2945-2946>

REFERENCES

- 1 Stone JH, Merkel PA, Spiera R, *et al*. Rituximab versus cyclophosphamide for ANCA-associated vasculitis. *N Engl J Med* 2010;363:221–32.
- 2 Specks U, Merkel PA, Seo P, *et al*. Efficacy of remission-induction regimens for ANCA-associated vasculitis. *N Engl J Med* 2013;369:417–27.
- 3 Little MA, Nightingale P, Verburgh CA, *et al*. Early mortality in systemic vasculitis: relative contribution of adverse events and active vasculitis. *Ann Rheum Dis* 2010;69:1036–43.
- 4 Wallace ZS, Fu X, Harkness T, *et al*. All-Cause and cause-specific mortality in ANCA-associated vasculitis: overall and according to ANCA type. *Rheumatology (Oxford)* 2020;59:2308–15.
- 5 Flossmann O, Berden A, de Groot K, *et al*. Long-Term patient survival in ANCA-associated vasculitis. *Ann Rheum Dis* 2011;70:488–94.
- 6 Kronbichler A, Jayne DRW, Mayer G. Frequency, risk factors and prophylaxis of infection in ANCA-associated vasculitis. *Eur J Clin Invest* 2015;45:346–68.
- 7 Kronbichler A, Kerschbaum J, Gopaluni S, *et al*. Trimethoprim-Sulfamethoxazole prophylaxis prevents severe/life-threatening infections following rituximab in antineutrophil cytoplasm antibody-associated vasculitis. *Ann Rheum Dis* 2018;77:1440–7.
- 8 Tieu J, Lester S, Raymond W, *et al*. Mortality and cause of death in patients with ANCA-associated vasculitis and polyarteritis nodosa in australia—a population-based study. *Rheumatology (Oxford)* 2022;61:1062–71.
- 9 Garcia-Vives E, Segarra-Medrano A, Martinez-Valle F, *et al*. Prevalence and risk factors for major infections in patients with antineutrophil cytoplasmic antibody-associated vasculitis: influence on the disease outcome. *J Rheumatol* 2020;47:407–14.
- 10 Ntatsaki E, Carruthers D, Chakravarty K, *et al*. BSR and BHRP guideline for the management of adults with ANCA-associated vasculitis. *Rheumatology (Oxford)* 2014;53:2306–9.
- 11 Terrier B, Charles P, Aumaitre O, *et al*. ANCA-associated vasculitides: recommendations of the french vasculitis study group on the use of immunosuppressants and biotherapies for remission induction and maintenance. *Presse Med* 2020;49:104031.
- 12 Yates M, Watts RA, Bajema IM, *et al*. EULAR/ERA-EDTA recommendations for the management of ANCA-associated vasculitis. *Ann Rheum Dis* 2016;75:1583–94.
- 13 Souza AWS de, Calich AL, Mariz H de A, *et al*. Recommendations of the brazilian society of rheumatology for the induction therapy of ANCA-associated vasculitis. *Rev Bras Reumatol Engl Ed* 2017;57 Suppl 2:484–96.
- 14 Mendel A, Ennis D, Go E, *et al*. CanVasc consensus recommendations for the management of antineutrophil cytoplasm antibody-associated vasculitis: 2020 update. *J Rheumatol* 2021;48:555–66.
- 15 Chung SA, Langford CA, Maz M, *et al*. 2021 American College of rheumatology/vasculitis Foundation guideline for the management of antineutrophil cytoplasmic antibody-associated vasculitis. *Arthritis Care Res (Hoboken)* 2021;73:1088–105.
- 16 Waki D, Nishimura K, Yoshida T, *et al*. Protective effect of different doses of trimethoprim-sulfamethoxazole prophylaxis for early severe infections among patients with antineutrophil cytoplasmic autoantibody-associated vasculitis. *Clin Exp Rheumatol* 2021;39 Suppl 129:142–8.
- 17 Stegeman CA, Tervaert JW, de Jong PE, *et al*. Trimethoprim-Sulfamethoxazole (co-trimoxazole) for the prevention of relapses of Wegener's granulomatosis. Dutch co-trimoxazole Wegener Study Group. *N Engl J Med* 1996;335:16–20.
- 18 Park JW, Curtis JR, Moon J, *et al*. Prophylactic effect of trimethoprim-sulfamethoxazole for Pneumocystis pneumonia in patients with rheumatic diseases exposed to prolonged high-dose glucocorticoids. *Ann Rheum Dis* 2018;77:644–9.
- 19 Yang L, Xie H, Liu Z, *et al*. Risk factors for infectious complications of ANCA-associated vasculitis: a cohort study. *BMC Nephrol* 2018;19:138.
- 20 Thomas K, Argyriou E, Kapsala N, *et al*. Serious infections in ANCA-associated vasculitides in the biologic era: real-life data from a multicenter cohort of 162 patients. *Arthritis Res Ther* 2021;23:90.

- 21 Rathmann J, Jayne D, Segelmark M, *et al.* Incidence and predictors of severe infections in ANCA-associated vasculitis: a population-based cohort study. *Rheumatology (Oxford)* 2021;60:2745–54.
- 22 Segelmark L, Flores-Suárez L, Mohammad A. Severe infections in patients with ANCA-associated vasculitis treated with rituximab. *Rheumatology (Oxford)* 2021;61:205–12.
- 23 McClure ME, Wason J, Gopaluni S, *et al.* Evaluation of PR3-ANCA status after rituximab for ANCA-associated vasculitis. *J Clin Rheumatol* 2019;25:217–23.
- 24 Keyt BA, Baliga R, Sinclair AM, *et al.* Structure, function, and therapeutic use of IgM antibodies. *Antibodies (Basel)* 2020;9:53.
- 25 Gamerith G, Mildner F, Merkel PA, *et al.* Association of baseline soluble immune checkpoints with the risk of relapse in PR3-ANCA vasculitis following induction of remission. *Ann Rheum Dis* 2023;82:253–61.
- 26 Walsh M, Merkel PA, Peh C-A, *et al.* Plasma exchange and glucocorticoids in severe ANCA-associated vasculitis. *N Engl J Med* 2020;382:622–31.
- 27 Furuta S, Nakagomi D, Kobayashi Y, *et al.* Effect of reduced-dose vs high-dose glucocorticoids added to rituximab on remission induction in ANCA-associated vasculitis: a randomized clinical trial. *JAMA* 2021;325:2178–87.
- 28 Smith RM, Jones RB, Specks U, *et al.* Rituximab as therapy to induce remission after relapse in ANCA-associated vasculitis. *Ann Rheum Dis* 2020;79:1243–9.
- 29 Zhu LP, Cupps TR, Whalen G, *et al.* Selective effects of cyclophosphamide therapy on activation, proliferation, and differentiation of human B cells. *J Clin Invest* 1987;79:1082–90.
- 30 Thiel J, Salzer U, Hässler F, *et al.* B cell homeostasis is disturbed by immunosuppressive therapies in patients with ANCA-associated vasculitides. *Autoimmunity* 2013;46:429–38.

Supplementary Table 1. CD19+ B cell count according to baseline characteristics (relapsing versus new onset disease) and the choice of pre-treatment.

	Number of patients	Median (minimum-maximum)	p-value
Relapsing disease	101	173.5 (2.4-1282.1)	0.012
New diagnosis	96	219.1 (24.9-1279.8)	
No exposure to cyclophosphamide	22	203.8 (32.1-655)	0.274
Prior exposure to cyclophosphamide	79	154.3 (2.4-1282.1)	

Supplementary Table 2. Baseline characteristics of patients with and without severe infections stratified by treatment regime

	CYC			RTX		
	Patients without severe infections (N=87)	Patients with severe infections (N=11)	p-value	Patients without severe infections (N=88)	Patients with severe infections (N=11)	p-value
Age (years)	52 (15-79)	52 (40-80)	0.277	56 (16-92)	50 (30-73)	0.518
Female	41 (47)	4 (36)	0.541	46 (52)	6 (55)	1
BMI (kg/m²)	28.7 (18.9-51.7)	27.0 (23.6-33.2)	0.485	26.5 (15.7-47.2)	31.4 (21.8-41.3)	0.032
Baseline BVAS (overall score)	8 (3-23)	7 (4-16)	0.683	8 (3-19)	8 (3-11)	0.440
Newly diagnosed at enrollment	44 (51)	4 (36)	0.530	45 (51)	3 (27)	0.202
Disease phenotype						
GPA	66 (76)	8 (73)	1	65 (74)	8 (73)	0.316
MPA	21 (24)	3 (27)		22 (25)	2 (18)	
Indeterminate	0 (0)	0 (0)		1 (1)	1 (9)	
ANCA serotype						
PR3	59 (68)	6 (55)	0.500	59 (67)	7 (64)	1
MPO	28 (32)	5 (46)		29 (33)	4 (36)	
Pulmonary hemorrhage	22 (25)	1 (9)	0.450	25 (28)	3 (27)	1
Organ involvement						
Renal	56 (64)	10 (91)	0.100	60 (68)	5 (46)	0.180
Lung	44 (51)	3 (27)	0.204	36 (41)	5 (46)	0.758
Heart	1 (1)	0 (0)	1	0 (0)	0 (0)	-
Ear, Nose and Throat	46 (53)	4 (36)	0.352	51 (58)	7 (64)	1
Mucous membranes and eyes	20 (23)	3 (27)	0.716	20 (23)	3 (27)	0.714
Cutaneous	14 (16)	1 (9)	1	17 (19)	2 (18)	1
Severe disease flare	20 (23)	1 (9)	0.448	19 (22)	1 (9)	0.454
Cumulative CYC dosage (g)	15.6 (0.6-33.1)	12.7 (1.8-24.5)	0.422	-	-	-
Cumulative RTX dosage (g)	-	-	-	2.8 (2.2-3.7)	3.1 (2.5-3.6)	0.216

TMP/SMX prophylaxis	81 (93)	8 (73)	0.061	83 (94)	8 (73)	0.043
Laboratory results						
Creatinine (mg/dl)	1.1 (0.5-3.4)	1.3 (0.9-3.1)	0.243	1.2 (0.6-4.2)	1.2 (0.7-2.7)	0.700
Lymphocytes (/μl)	1300 (300-12200)	1200 (500-3900)	0.625	1300 (600-4600)	1600 (500-3300)	0.642
WBC (/μl)	11 (3-24)	13 (9-27)	0.071	12 (2-26)	9 (5-24)	0.137
Total Ig (mg/dl)	1214 (409-3101)	1109 (580-1885)	0.479	1134 (540-2776)	1264 (889-2008)	0.126
IgA (mg/dl)	153 (14-882)	186 (49-278)	0.760	154 (54-634)	232 (107-289)	0.413
IgG (mg/dl)	921 (322-2598)	874 (493-1248)	0.394	879 (373-2123)	920 (745-1585)	0.370
IgM (mg/dl)	88 (16-231)	72 (38-359)	0.457	82 (18-271)	117 (29-716)	0.180
Total CD3+ T cells	736 (122-2304)	676 (51-1103)	0.095	676 (49-3656)	829 (133-2577)	0.953
Total CD19+ B cells	194 (2-977)	129 (12-208)	0.023	277 (14-1282)	115 (26-759)	0.022
Total CD5+ B cells	19 (0-261)	10 (1-44)	0.170	15 (0-422)	17 (4-139)	0.796

Continuous variables are expressed as median (minimum and maximum). Categorical variables are n (%).

Abbreviations: ANCA: antineutrophil cytoplasmic antibody; BMI: body mass index; BVAS: Birmingham Vasculitis Activity Score; CYC: cyclophosphamide; GPA: granulomatosis with polyangiitis; Ig: immunoglobulin; MPA: microscopic polyangiitis; MPO: myeloperoxidase; PR3: proteinase 3; RTX: rituximab; TMP/SMX: trimethoprim-sulfamethoxazole; WBC: white blood cells

Supplementary Table 3. Baseline characteristics of patients without and with trimethoprim-sulfamethoxazole use.

	Patients without TMP/SMX (N=17)	Patients with TMP/SMX (N=180)	p-value
Age (years)	52 (34-73)	53.5 (15-92)	0.428
Female	10 (59)	87 (48)	0.455
BMI (kg/m²)	28.3 (21.8-40.4)	27.6 (15.7-51.7)	0.563
Baseline BVAS/WG (overall score)	10 (3-16)	8 (3-23)	0.158
Newly diagnosed at enrollment	5 (29)	91 (51)	0.128
Disease phenotype			
GPA	14 (82)	133 (74)	0.096
MPA	2 (12)	46 (26)	
Indeterminate	1 (6)	1 (1)	
ANCA serotype			
PR3	7 (41)	124 (69)	0.030
MPO	10 (59)	56 (31)	
Pulmonary hemorrhage	5 (29)	46 (26)	0.774
Organ involvement			
Renal	11 (65)	120 (67)	1

Lung	7 (41)	81 (45)	0.804
Heart	0 (0)	1 (1)	1
Ear, Nose and Throat	10 (59)	98 (54)	0.803
Mucous membranes and eyes	2 (12)	44 (24)	0.369
Cutaneous	6 (35)	28 (16)	0.084
Severe disease flare	4 (24)	37 (21)	0.758
Laboratory results			
Creatinine (mg/dl)	1.0 (0.6-4.2)	1.2 (0.5-4.1)	0.476
Lymphocytes (/μl)	1200 (600-3300)	1300 (300-12200)	0.906
WBC (/μl)	13 (5-27)	11 (2-26)	0.338
Total Ig (mg/dl)	1230 (544-1885)	1174 (409-3101)	0.855
IgA (mg/dl)	179 (71-278)	155 (14-882)	0.709
IgG (mg/dl)	913 (393-1248)	904 (322-2598)	0.903
IgM (mg/dl)	97 (32-716)	83 (16-271)	0.414
Total CD3+ T cells	688 (133-2577)	730 (49-3656)	0.933
Total CD19+ B cells	191 (26-707)	200 (2-1282)	0.341
Total CD5+ B cells	6 (0-75)	18 (0-422)	0.048

Continuous variables are expressed as median (minimum and maximum). Categorical variables are n (%).

Abbreviations: ANCA: antineutrophil cytoplasmic antibody; BMI: body mass index; BVAS: Birmingham Vasculitis Activity Score; GPA: granulomatosis with polyangiitis; Ig: immunoglobulin; MPA: microscopic polyangiitis; MPO: myeloperoxidase; PR3: proteinase 3; TMP/SMX: trimethoprim-sulfamethoxazole; WBC: white blood cell count.

Supplementary Table 4. Unadjusted univariate Cox regression analysis on the predictors of severe infections

Covariate	Hazard ratio	95% confidence interval	p-value
Age (years)*	1.005	0.977-1.033	0.736
Age > 60 years*	1.031	0.420-2.530	0.946
Gender	1.218	0.526-2.820	0.645
Weight (kg)*	1.004	0.985-1.024	0.674
Height (cm)*	1.001	0.961-1.042	0.962
BMI (kg/m ²)*	1.016	0.955-1.081	0.624
BMI (kg/m ²) > 35*	1.054	0.357-3.115	0.924
Newly diagnosed at enrollment	0.446	0.182-1.095	0.078
Cumulative CYC dosage (mg)	1.000	1.000-1.000	0.249
RTX	0.979	0.424-2.259	0.961
Cumulative RTX dosage (mg)	1.001	1.000-1.003	0.156

RTX dosage at time of relapse (mg)	1.002	0.998-1.007	0.352
RTX at relapse	0.347	0.081-1.493	0.155
Limited disease flare*	0.973	0.381-2.488	0.955
Severe disease flare*	0.429	0.099-1.846	0.255
First disease flare prior to 6 months	0.438	0.102-1.875	0.266
GPA*	1.090	0.399-2.976	0.866
Indeterminate [#] *	7.398	0.862-63.470	0.068
PR3 serotype*	0.762	0.326-1.784	0.532
BVAS*	0.950	0.823-1.096	0.480
BVAS > 8*	0.753	0.316-1.795	0.522
Fever > 38°C*	0.751	0.254-2.219	0.604
TMP/SMX prophylaxis	0.208	0.081-0.534	0.001
Pulmonary hemorrhage*	0.628	0.212-1.854	0.399
Renal disease*	1.071	0.436-2.627	0.881
Arthralgia*	0.631	0.273-1.461	0.283
Lung involvement*	0.666	0.279-1.589	0.360
Peripheral neuropathy*	1.240	0.457-3.361	0.672
ENT involvement*	0.789	0.342-1.820	0.579
Mucous membranes and eyes*	1.292	0.506-3.302	0.593
Cutaneous*	0.699	0.207-2.362	0.564
Subglottic involvement*	0.824	0.111-6.127	0.850
Creatinine (mg/dl)*	1.026	0.594-1.772	0.926
Creatinine > 1.5 mg/dl*	0.840	0.329-2.147	0.716
Combination of age and baseline creatinine*			
Age>60, creatinine ≤1.5	0.645	0.184-2.265	0.494
Age≤60, creatinine >1.5	0.437	0.099-1.938	0.276
Age>60, creatinine >1.5	1.212	0.395-3.719	0.737
Lymphocytes (/μl)*	1.000	1.000-1.000	0.979
Lymphocytes < 800 (/μl)*	0.850	0.199-3.638	0.827
WBC (/μl)*	1.016	0.934-1.105	0.710
Total CD3 T cells*	0.999	0.999-1.000	0.207
Total CD19 B cells*	0.995	0.992-0.999	0.010
Total CD5 B cells ^{*,*1}	0.992	0.979-1.005	0.210
Serum total Ig (mg/dl)*	1.000	0.999-1.001	0.921
Serum IgA (mg/dl)*	1.000	0.996-1.003	0.975
Serum IgG (mg/dl)*	1.000	0.999-1.001	0.743
Serum IgG > 7mg/dL*	0.849	0.287-2.510	0.768
Serum IgG > 5mg/dL*	0.700	0.094-5.213	0.728
Serum IgM (mg/dl)*	1.006	1.002-1.010	0.002

Statistically significant p-values appear in boldface type (p < 0.05). Clinical and laboratory data correspond baseline values.

Abbreviations: ANCA: antineutrophil cytoplasmic antibody; BMI: body mass index; BVAS: Birmingham Vasculitis Activity Score; CYC: cyclophosphamide; ENT: Ear, Nose and Throat; GPA: granulomatosis with polyangiitis; Ig: immunoglobulin; PR3: proteinase 3; RTX: rituximab; TMP/SMX: trimethoprim-sulfamethoxazole; WBC: white blood cells

* At baseline; ^{*1} 7 days after therapy initiation; # n=2