



OPEN ACCESS

## EPIDEMIOLOGICAL SCIENCE

## Serum uric acid control for prevention of gout flare in patients with asymptomatic hyperuricaemia: a retrospective cohort study of health insurance claims and medical check-up data in Japan

Ruriko Koto ,<sup>1</sup> Akihiro Nakajima,<sup>2</sup> Hideki Horiuchi,<sup>1</sup> Hisashi Yamanaka<sup>3,4,5</sup>

Handling editor Josef S Smolen

► Additional supplemental material is published online only. To view, please visit the journal online (<http://dx.doi.org/10.1136/annrheumdis-2021-220439>).

<sup>1</sup>Medical Science Department, Teijin Pharma Limited, Chiyoda-ku, Tokyo, Japan

<sup>2</sup>Pharmaceutical Development Administration Department, Teijin Pharma Limited, Chiyoda-ku, Tokyo, Japan

<sup>3</sup>Rheumatology, Sanno Medical Center, Tokyo, Japan

<sup>4</sup>Department of Rheumatology, International University of Health and Welfare, Chiba, Japan

<sup>5</sup>Institute of Rheumatology, Tokyo Women's Medical University, Tokyo, Japan

## Correspondence to

Ruriko Koto, Medical Science Department, Teijin Pharma Limited, Chiyoda-ku, Tokyo 100-8585, Japan; [r.koutou@teijin.co.jp](mailto:r.koutou@teijin.co.jp)

Portions of these data were presented in abstract form at the ACR Convergence 2020 (5–9 November 2020).

Received 26 March 2021

Accepted 5 June 2021

Published Online First

22 June 2021



© Author(s) (or their employer(s)) 2021. Re-use permitted under CC BY-NC. No commercial re-use. See rights and permissions. Published by BMJ.

**To cite:** Koto R, Nakajima A, Horiuchi H, et al. *Ann Rheum Dis* 2021;**80**:1483–1490.

## ABSTRACT

**Objectives** In patients with gout, treating to target serum uric acid levels (sUA) of  $\leq 6.0$  mg/dL is universally recommended to prevent gout flare. However, there is no consensus on asymptomatic hyperuricaemia. Using Japanese health insurance claims data, we explored potential benefits of sUA control for preventing gout flare in subjects with asymptomatic hyperuricaemia.

**Methods** This retrospective cohort study analysed the JMDC Claims Database from April 2012 through June 2019. Subjects with sUA  $\geq 8.0$  mg/dL were identified, and disease status (prescriptions for urate-lowering therapy (ULT), occurrence of gout flare, sUA) was investigated for 1 year. Time to first onset and incidence rate of gout flare were determined by disease status subgroups for 2 years or more. The relationship between gout flare and sUA control was assessed using multivariable analysis.

**Results** The analysis population was 19 261 subjects who met eligibility criteria. We found fewer occurrences of gout flare, for both gout and asymptomatic hyperuricaemia, in patients who achieved sUA  $\leq 6.0$  mg/dL with ULT than in patients whose sUA remained  $> 6.0$  mg/dL or who were not receiving ULT. In particular, analysis by a Cox proportional-hazard model for time to first gout flare indicated that the HR was lowest, at 0.45 (95% CI 0.27 to 0.76), in subjects with asymptomatic hyperuricaemia on ULT ( $5.0 < \text{sUA} \leq 6.0$  mg/dL), compared with untreated subjects (sUA  $\geq 8.0$  mg/dL).

**Conclusions** Occurrences of gout flare were reduced by controlling sUA at  $\leq 6.0$  mg/dL in subjects with asymptomatic hyperuricaemia as well as in those with gout.

**Trial registration number** UMIN000039985.

## INTRODUCTION

In gout, hyperuricaemia causes abnormal urate deposition throughout the body.<sup>1 2</sup> The disease manifests as painful gout flares, which occur episodically in many patients with gout and constitute a significant clinical burden.<sup>3</sup> For adequate management of gout, guidelines around the world consistently recommend the use of urate-lowering therapy (ULT) in a treat-to-target approach to maintain serum uric acid levels (sUA) of  $\leq 6.0$  mg/dL.<sup>1 2 4–6</sup>

The risk of gout flare can be reduced by introducing ULT early in the clinical course of the disease,<sup>7 8</sup> and European and US guidelines now generally recommend initiation of ULT at the first

## Key messages

## What is already known about this subject?

- For adequate management of gout, guidelines around the world consistently recommend the use of urate-lowering therapy (ULT) to maintain serum uric acid levels (sUA) of  $\leq 6.0$  mg/dL.

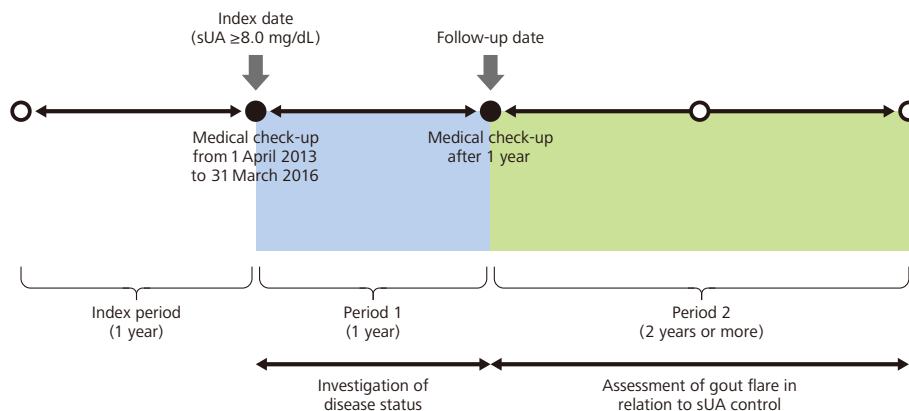
## What does this study add?

- In both patients population with asymptomatic hyperuricaemia and those with gout, our study indicates that the occurrence of gout flare can be lowered by using ULT to maintain sUA  $\leq 6.0$  mg/dL.

## How might this impact clinical practice or future developments?

- This study suggests that, in subjects with asymptomatic hyperuricaemia, control of sUA may provide long-term benefits by reducing or eliminating future occurrences of gout flare.

gout flare under specific conditions.<sup>4 5</sup> However, there is no consensus on whether ULT should be prescribed prophylactically for patients with asymptomatic hyperuricaemia before the first gout flare. European and US guidelines do not recommend ULT for asymptomatic hyperuricaemia. This may be because there is insufficient accumulated data from patients with asymptomatic hyperuricaemia in those countries to provide appropriate guidance. In contrast, Japanese guidelines for gout and hyperuricaemia recommend the introduction of ULT under specific conditions to prevent gout flare in patients having asymptomatic hyperuricaemia with sUA of  $\geq 8.0$  mg/dL.<sup>2 6</sup> As a result, real-world treatment outcome data from patients with asymptomatic hyperuricaemia have been collected in Japan in the course of daily clinical practice. Previously, we found that most patients with gout or asymptomatic hyperuricaemia failed to meet their sUA targets in Japan.<sup>9</sup> Meanwhile, questions remain on whether ULT-induced reduction of sUA truly improves the patient's subsequent clinical course or reduces disease burden. In addition, although randomised controlled trials (RCTs) of patients with asymptomatic hyperuricaemia have shown that the ULT febuxostat suppresses gout flares compared with placebo<sup>10</sup> or control,<sup>11 12</sup> real-world evidence is not



**Figure 1** Study design. sUA, serum uric acid levels.

yet available on the relationship between gout flare and sUA in such patients.

We used data from health insurance claims and medical check-ups in a real-world setting to explore the research question, ‘In patients with asymptomatic hyperuricaemia, is control of sUA (measured by whether or not sUA is maintained at  $\leq 6.0$  mg/dL or exceeds that amount) associated with subsequent risk of gout flare?’

## METHODS

### Study design and setting

This retrospective cohort study incorporated data from the JMDC Claims Database, including records of Japanese health insurance claims and medical check-ups from April 2012 through June 2019. JMDC collects information from multiple in-country organisations that provide health insurance coverage to Japanese employees and their dependents.<sup>13</sup> Data include diagnostic codes, drug prescriptions and information from annual medical check-ups for each person.

Subjects with sUA  $\geq 8.0$  mg/dL at one or more medical check-ups from 1 April 2013 to 31 March 2016 were identified. The study consisted of three distinct periods: the index period, period 1 and period 2. The index date was defined as the time of the earliest medical check-up showing sUA  $\geq 8.0$  mg/dL, and the month of that medical check-up was termed the index month. The index period was the year prior to (and excluding) the index date. Period 1 started on the index date and ended on the date of the subject’s next annual medical check-up (follow-up date). Period 2 started on the day after the follow-up date (figure 1).

### Participants

Subjects were included in the study if they had sUA  $\geq 8.0$  mg/dL at one or more medical check-ups from 1 April 2013 to 31 March 2016, estimated glomerular filtration rate (eGFR) data available at the index date, and sUA data available 1 year after the index date, were at least 18 years of age on the index date, and were continuously registered in the JMDC Claims Database from 12 months before the index month to 24 months after the follow-up date.

To focus on patients who had asymptomatic hyperuricaemia (sUA  $\geq 8.0$  mg/dL) that was newly detected at a medical check-up after the index period, subjects were excluded from the study if at least once during the index period they were diagnosed

with gout (ICD10 code M10) or asymptomatic hyperuricaemia (ICD10 code E790). Subjects were also excluded if they were prescribed ULT or if they were diagnosed with malignant tumours (ICD10 code C00-C97, D00-D09) during that period.

ULT was defined as any drug designated with ATC code M04 (antigout preparations), except for colchicine. Definitions of patient characteristics and drugs are presented in online supplemental table S1.

### Study measures

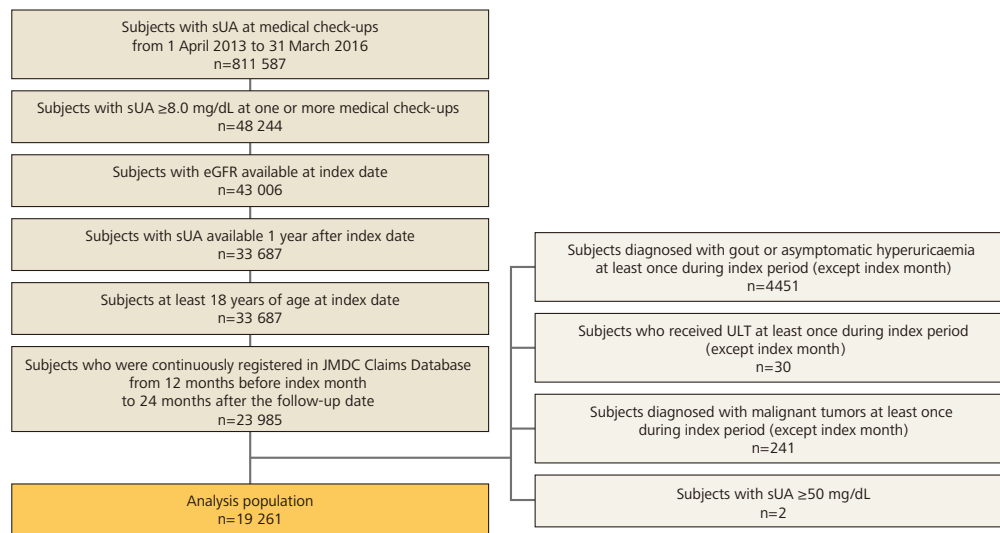
During period 1, disease status was investigated for each individual subject, including the presence or absence of a ULT prescription, the presence or absence of gout flare and sUA at the follow-up date.

During period 2, the relationship between gout flare and sUA control was assessed, including time to first onset and incidence rate of gout flare. These data were calculated for each disease status subgroup as determined in period 1.

In this study, we used the term ‘gout flare’ when two parameters were satisfied. The first was a diagnosis of gout (ICD10 code M10) and prescriptions for antirheumatics, non-steroidal plain (ATC code M01A1) or oral corticosteroids, plain (ATC code H02A2) or colchicine (generic name), shown on the same insurance claim form. For the second, we confirmed the intervals between prescriptions for the above-mentioned drugs. We interpreted an interval of  $\geq 14$  days between the end of prescription for one drug and start of prescription for another drug as evidence of newly occurring gout flare. We used the term ‘subject with gout’ to indicate a subject who experienced gout flare, as defined above, during period 1, excluding subjects for whom treatment was not required (no prescription for ULT, and sUA  $< 8.0$  mg/dL at the follow-up date) under Japanese treatment guidelines.<sup>2</sup> Likewise, we used the term ‘subject with asymptomatic hyperuricaemia’ to indicate a subject who did not meet the definition of ‘subject with gout’ during period 1, excluding subjects for whom treatment was not required (no prescription for ULT, and sUA  $< 8.0$  mg/dL at the follow-up date).

### Statistical methods

Our analysis included all subjects meeting the eligibility criteria. For period 1, an event tree was created using the presence or absence of a ULT prescription, the occurrence or non-occurrence of gout flare and sUA at the 1 year follow-up as the bifurcation



**Figure 2** Subject disposition. eGFR, estimated glomerular filtration rate; sUA, serum uric acid levels; ULT, urate-lowering therapy.

points. Based on this event tree, subjects were classified into seven subgroups, including a group with sUA <8.0 mg/dL for whom treatment was not required.

The Kaplan-Meier method was used to estimate time to first gout flare in period 2 for each of the six disease status subgroups determined in period 1 (excluding subjects for whom no treatment was required). The median values and 95% CI were calculated. The time origin was the day after the follow-up date. For no events, the cut-off date was the first day of the month in which the subject terminated health insurance association membership. Univariable and multivariable analyses were performed using a Cox proportional-hazards model for subjects with asymptomatic hyperuricaemia and subjects with gout to calculate the HR. Explanatory variables were gender, age at follow-up date, eGFR at follow-up date, number of comorbidities and a combination of sUA range at follow-up date (sUA ≤5.0, 5.0<sUA ≤6.0, sUA ≤6.0, 6.0<sUA ≤7.0 and 7.0<sUA) and ULT usage (ULT (–) and ULT (+)) in period 1.

Among subjects with asymptomatic hyperuricaemia who were prescribed ULT during period 1, propensity score analyses compared the subject subgroups with sUA ≤6.0 mg/dL and sUA >6.0 mg/dL at the follow-up date. Details are provided in the online supplemental methods.

The incidence rate for gout flare during period 2 was calculated for each disease status subgroup as determined in period 1. Univariable and multivariable analyses, using a negative binomial regression model, were performed for each asymptomatic hyperuricaemia group and gout group to calculate the relative incidence rate. The explanatory variables were the same as used for Cox proportional-hazards model analysis. The log value of the follow-up period during period 2 was used as an offset variable.

All reported p values were two sided and were not adjusted for multiple testing. All analyses were performed using SAS V.9.4.

## RESULTS

### Study population

The population of 811 587 subjects had at least one sUA measurement at one or more medical check-ups from 1 April 2013 to 31 March 2016, with records showing that 48 244 of them had

sUA ≥8.0 mg/dL. Of those, 19 261 subjects met the inclusion criteria and did not meet the exclusion criteria (figure 2).

### Subject characteristics

The overall study population (n=19 261) was predominantly man (98.3%), with a mean age ±SD of 43.2±9.4 years and mean sUA±SD of 8.47±0.53 mg/dL. The most frequent comorbidity was hypertension (13.5%), followed by hyperlipidaemia (11.5%) and renal dysfunction (eGFR <60 mL/min/1.73 m<sup>2</sup>; 11.3%). A large portion of subjects (71.6%) had no comorbidities (table 1).

### Disease status during period 1

We developed an event tree and summarised our study findings in 10 final nodes on that event tree. We then established seven subgroups of disease status, based on the findings shown in those 10 final nodes. The largest group of participants (n=10 480) showed sUA <8.0 mg/dL at their next check-up and were classified as 'no treatment required'. The next largest group consisted of patients who were not receiving ULT, had not experienced gout flare and continued to have sUA ≥8.0 mg/dL (n=7049). A total of 337 subjects with asymptomatic hyperuricaemia and 101 with gout had received ULT and reached sUA of ≤6.0 mg/dL by the follow-up date (figure 3).

Subject characteristics, organised by disease status, are shown in online supplemental table S2. In subjects with gout and those with asymptomatic hyperuricaemia, the subgroup of subjects on ULT with sUA ≤6.0 mg/dL tended to be older and to have more comorbidities, including hypertension and hyperlipidaemia, compared with the other subgroups. The subgroup on ULT with sUA >6.0 mg/dL had a higher percentage of subjects with renal dysfunction than the other subgroups.

### Occurrence of gout flare in subjects with asymptomatic hyperuricaemia during period 2

In subjects with asymptomatic hyperuricaemia, the time to first gout flare was longest (median not reached) in the subgroup of subjects with sUA ≤6.0 mg/dL. The time to first gout flare was comparable between the subgroup with sUA >6.0 mg/dL and

**Table 1** Subject characteristics

	Analysis population, n=19 261
<b>Age, years</b>	
Mean±SD	43.2±9.4
<b>n (%)</b>	
18–19	33 (0.2)
20–29	1572 (8.2)
30–39	4932 (25.6)
40–49	7593 (39.4)
50–59	4421 (23.0)
60–69	681 (3.5)
≥70	29 (0.2)
<b>Sex, n (%)</b>	
Male	18 924 (98.3)
Female	337 (1.7)
<b>eGFR, mL/min/1.73 m<sup>2</sup>*</b>	
Mean±SD	75.59±14.15
<b>n (%)</b>	
≥90	2736 (14.2)
≥60,<90	14 339 (74.4)
≥30,<60	2150 (11.2)
≥15,<30	22 (0.1)
<15	14 (<0.1)
≥60	17 075 (88.7)
<60	2186 (11.3)
<b>sUA, mg/dL</b>	
Mean±SD	8.47±0.53
<b>n (%)</b>	
<8	0
≥8,<9	16 549 (85.9)
≥9,<10	2321 (12.1)
≥10	391 (2.0)
<b>Comorbidities of interest, n (%)</b>	
Hypertension	2591 (13.5)
Type 2 diabetes	983 (5.1)
Ischaemic heart disease	356 (1.8)
Heart failure	295 (1.5)
Cerebrovascular disease	271 (1.4)
Hyperlipidaemia	2212 (11.5)
<b>Number of comorbidities, n (%)</b>	
0	13 796 (71.6)
1	3380 (17.5)
2	1214 (6.3)
3	532 (2.8)
4	228 (1.2)
5	90 (0.5)
6	19 (<0.1)
7	2 (<0.1)
<b>Concomitant medications, n (%)</b>	
Antihyperlipidaemic drug	1315 (6.8)
ACE inhibitor	138 (0.7)
ARB	1712 (8.9)
Diuretic drug	385 (2.0)
Antidiabetic drug	407 (2.1)

\*eGFR (male)= $194 \times sCr^{-1.094} \times age^{-0.287}$ , eGFR (female)= $194 \times sCr^{-1.094} \times age^{-0.287} \times 0.739$ . ACE, angiotensin-converting enzyme; ARB, angiotensin II receptor blocker; eGFR, estimated glomerular filtration rate; sUA, serum uric acid levels.

the untreated subgroup (median not reached for either group) (figure 4).

The incidence rate of gout flare was 0.033 (95% CI 0.023 to 0.043) flares/person-year for the subgroup of subjects with asymptomatic hyperuricaemia prescribed ULT and having sUA ≤6.0 mg/dL, 0.083 (95% CI 0.074 to 0.093) flares/person-year

for the subgroup prescribed ULT and having sUA >6.0 mg/dL and 0.081 (95% CI 0.078 to 0.084) flares/person-year for those without ULT (figure 5).

From the results of Cox proportional-hazards model for time to first gout flare among the subjects on ULT, the HR was the lowest of 0.45 (95% CI 0.27 to 0.76) in subjects on ULT (5.0<sUA ≤ 6.0 mg/dL) compared with non-ULT subjects (sUA ≥8.0 mg/dL). From the results of a negative binomial regression model, the relative incidence rate was the lowest, at 0.40 (95% CI 0.24 to 0.68), in subjects on ULT (5.0<sUA ≤ 6.0 mg/dL) compared with non-ULT subjects (table 2). Findings were also recorded for multivariable and univariable analyses of time to first gout flare (online supplemental table S3) and the incidence rate for gout flare (online supplemental table S4).

Propensity score analyses were performed on subjects with asymptomatic hyperuricaemia who were receiving ULT. The C statistic was 0.689, and the p value for the Hosmer-Lemeshow test was 0.381. The intergroup distributions of baseline characteristics for the inverse probability weighting and propensity score-matched cohorts were better balanced than for the original cohort (online supplemental table S5).

Findings from the Kaplan-Meier curve and Cox proportional-hazard model are shown in online supplemental figure S1 and table S6). The HR for sUA ≤6.0 mg/dL compared with sUA >6.0 mg/dL for average treatment effect in the inverse probability of weighting (IPW) cohort was 0.48 (95% CI 0.30 to 0.79). Subjects who received ULT during period 1 and who showed sUA ≤6.0 mg/dL tended to have fewer attacks of gout flare than subjects with sUA >6.0 mg/dL. The results were robust because all analyses of our data provided similar findings (online supplemental table S6).

### Occurrence of gout flare in subjects with gout during period 2

Among subjects with gout, the Kaplan-Meier curve for the group with sUA ≤6.0 mg/dL crossed the curves for both the group with sUA >6.0 mg/dL and the untreated subgroup (figure 4). The median time to first gout flare was 158.3 (95% CI 120.6 to –) in the untreated group and 156.6 (95% CI 113.3 to 198.7) in the sUA >6.0 mg/dL group. The median value was not reached in the sUA ≤6.0 mg/dL group.

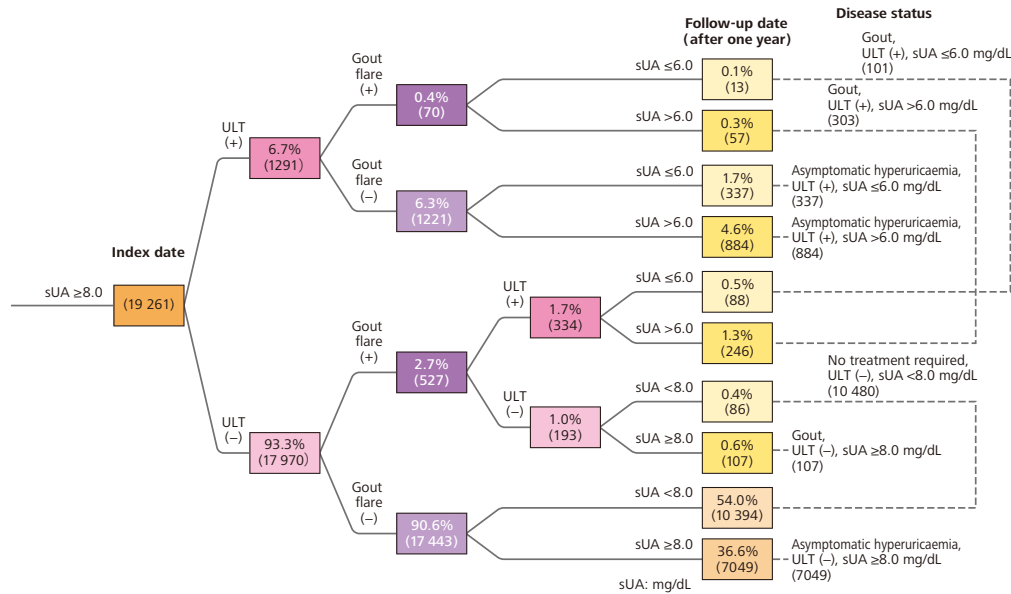
The gout flare incidence rate was 0.333 (95% CI 0.275 to 0.391) flares/person-year for those on ULT with sUA ≤6.0 mg/dL, 0.468 (95% CI 0.429 to 0.508) flares/person-year for those on ULT with sUA >6.0 mg/dL, and 0.491 (95% CI 0.423 to 0.560) flares/person-year for those who were not receiving ULT (figure 5). Based on results from a Cox proportional-hazards model, the HR was the lowest, at 0.65 (95% CI 0.40 to 1.05), in subjects on ULT (5.0<sUA ≤ 6.0 mg/dL) compared with non-ULT subjects (sUA ≥8.0 mg/dL). A negative binomial regression indicated that the relative incidence rate was the lowest, at 0.54 (95% CI 0.33 to 0.91), in subjects on ULT (5.0<sUA ≤ 6.0 mg/dL) compared with non-ULT subjects (table 2).

### DISCUSSION

In this study, we hypothesised that gout flare would be less common in patients whose sUA was decreased by ULT than in patients whose sUA remained elevated, not only in subjects with gout, but also in those with asymptomatic hyperuricaemia. Because Japanese guidelines recommend the use of ULT in certain patients with asymptomatic hyperuricaemia, data were available to support our hypothesis.

Multivariable analysis consistently suggested that the risk of gout flare was lowest when sUA was reduced to 5.0 mg/

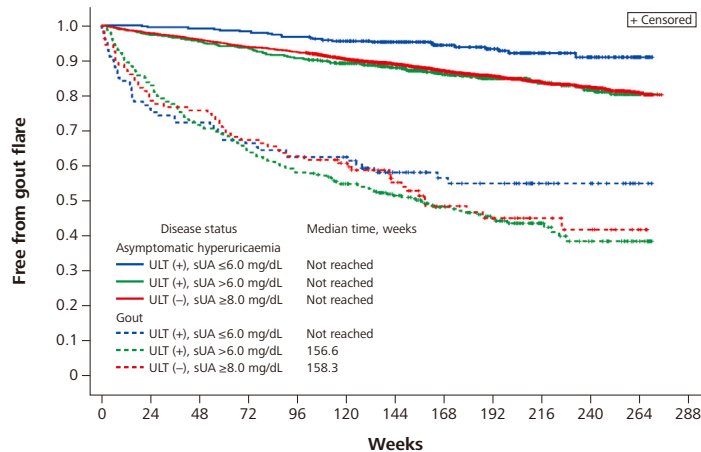




**Figure 3** Event tree analysis of disease status from index date to follow-up date (period 1). Parentheses indicate the number of subjects. For percentages, the denominator was 19 261 subjects. sUA, serum uric acid levels; ULT, urate-lowering therapy.

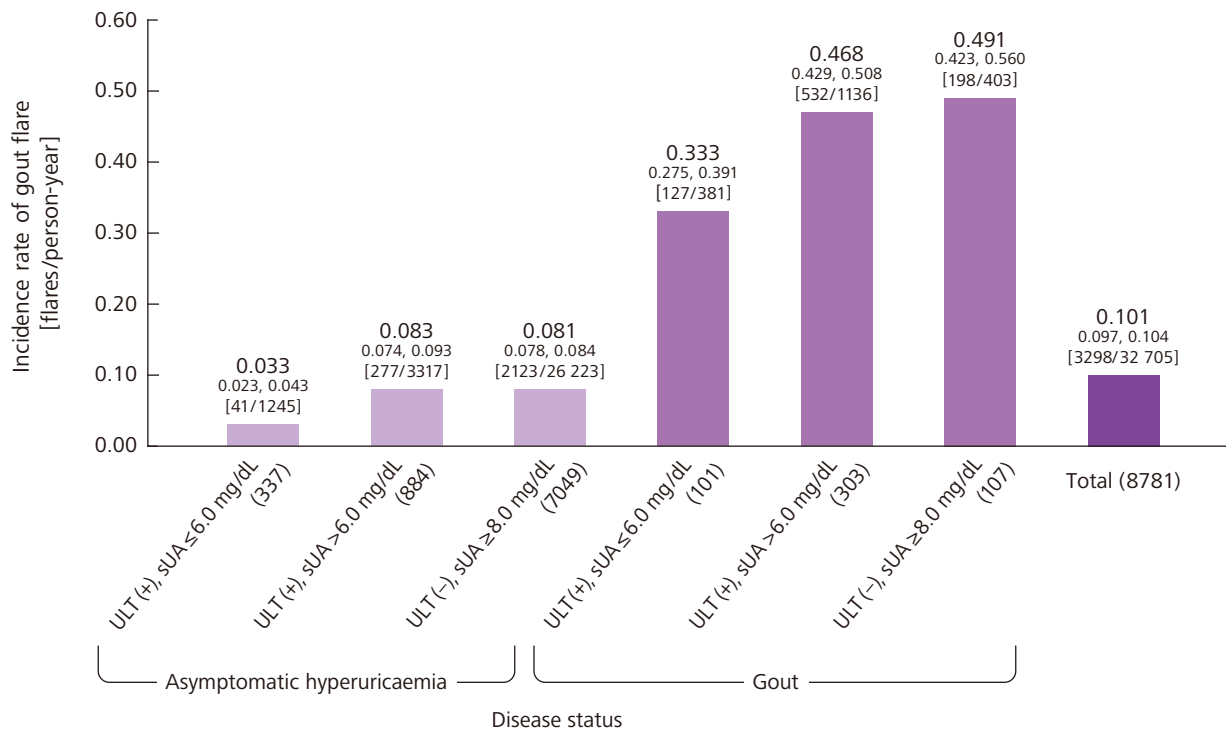
dL<sUA ≤6.0mg/dL, both for asymptomatic hyperuricaemia and for gout. However, when we analysed time to first gout flare, we found that subjects with gout whose sUA was reduced to ≤5.0mg/dL were at higher risk for gout flare. Based on the finding that the Kaplan-Meier curve for the sUA ≤6.0mg/dL group crossed the curves for the sUA >6.0mg/dL group and the

untreated group, we deduced that excessively rapid reduction of sUA may induce gout flare in the early phase of ULT introduction. This agrees with results from multiple previous studies, which showed that a sharp reduction in sUA during the initial phase of ULT was associated with gout flare.<sup>14 15</sup> Interestingly, our study showed this relationship only for gout, not for asymptomatic



Disease status		Weeks												
		0	24	48	72	96	120	144	168	192	216	240	264	288
Asymptomatic hyperuricaemia	ULT (+), sUA ≤6.0 mg/dL	337	335	334	331	326	312	266	191	160	96	67	22	0
	ULT (+), sUA >6.0 mg/dL	884	860	843	826	801	751	661	492	404	243	171	35	0
	ULT (-), sUA ≥8.0 mg/dL	7049	6893	6758	6617	6512	6137	5119	3872	3197	1794	1287	363	0
Gout	ULT (+), sUA ≤6.0 mg/dL	101	77	73	67	63	62	44	35	31	19	13	2	0
	ULT (+), sUA >6.0 mg/dL	303	252	217	195	176	156	124	92	72	39	25	10	0
	ULT (-), sUA ≥8.0 mg/dL	107	85	81	72	67	61	46	31	24	16	12	5	0

**Figure 4** Kaplan-Meier curve for time to first gout flare in period 2. sUA, serum uric acid levels; ULT, urate-lowering therapy.



**Figure 5** Incidence rate of gout flare during period 2. Numbers on top indicate the incidence rate, and numbers below them indicate the 95% CI. Brackets indicate the number of flares/person-year. Parentheses indicate the number of subjects. sUA, serum uric acid levels; ULT, urate-lowering therapy.

hyperuricaemia, possibly because of differences between the two groups in the amount of urate deposited in body tissues.

Propensity score analyses were applied to subjects with asymptomatic hyperuricaemia who were prescribed ULT, to compare findings between the group that reached the target sUA for patients with gout (sUA ≤ 6.0 mg/dL) and the group that did not. IPW analysis and propensity score matching analysis yielded consistent results, with lower levels of gout flare in subjects whose sUA was reduced by ULT to the gout target level. These results were robust and did not contradict the findings from our previous retrospective observational study, which also used the JMDC database and showed that subjects experienced less gout flare when they practiced closer adherence to ULT and when their sUA was monitored regularly.<sup>16</sup>

In patients with gout, the treat-to-target approach is widely accepted.<sup>14</sup> There is currently no consensus on whether sUA should be lowered to the gout target level in patients with asymptomatic hyperuricaemia since limited evidence is available to support this treatment option. However, in a recent randomised controlled study of asymptomatic hyperuricaemia in chronic kidney disease (CKD), researchers confirmed that the incidence proportion of gout flare was significantly lower (0.91% vs 5.86%) in patients treated with ULT than in those treated with a placebo.<sup>10</sup> Our study supports those findings, showing that the incidence rate of gout flare was lowered by using ULT to maintain sUA at the gout target level in subjects with asymptomatic hyperuricaemia as well as in those with gout. However, in patients with asymptomatic hyperuricaemia the incidence of gout over a 3 year period was 4.8% in subjects in the ULT group who reached sUA ≤ 6.0 mg/dL and 11.1% in the untreated group. In other words, the number needed to treat (NNT) for 3 years to prevent 1 incident of gout flare was 16 patients. Similarly, previous RCTs in patients with asymptomatic hyperuricaemia indicated the NNT for 3 years to prevent

a single gout flare was 24 patients.<sup>4 10 17</sup> In addition, results from two recent randomised clinical trials showed that, among those with asymptomatic hyperuricaemia and CKD, allopurinol provided no renoprotective benefits and potentially doubled the risk of death.<sup>18–20</sup> Clearly, the introduction of ULT for asymptomatic hyperuricaemia should be considered only after carefully assessing the clinical risks and benefits and the health economics of such treatment.

This study was significantly strengthened by using a large-scale medical information database that allowed us to follow approximately 20 000 subjects with asymptomatic hyperuricaemia for at least 2 years. Our study was feasible because Japan is one of the few countries where asymptomatic hyperuricaemia is treated, and records of that treatment are available. It would be much more challenging to observe asymptomatic hyperuricaemia treatment results in most other countries.

There are several limitations to this study. First, no validation study was conducted on the definitions of disease and outcome, so the applicability of those definitions is limited. Second, the JMDC database contains information from health insurance associations that include only limited data from subjects aged 65 and older and no data from those aged 75 and older, so our findings cannot be generalised to the entire Japanese population. Third, the study was limited to annual medical check-up data, so sUA were measured only once a year in most cases, and subjects might not have taken their ULT or other drugs on the day of the check-up. Fourth, there was a possibility of selection bias because the study was limited to subjects for whom sUA were available from medical check-ups for at least two consecutive years and who could be followed up for an additional 2 years. Fifth, to answer the research question, it was necessary to set the time origin for evaluation of gout flare during period 2 as the day after the next measurement of sUA (the follow-up date). This resulted in different dates for gout flare onset and

**Table 2** Covariate-adjusted analysis for time to first onset and incidence rate of gout flare in period 2

	ULT (–)		ULT (+)		
	sUA, mg/mL		sUA, mg/mL		
	≥8.0	≤5.0	>5.0, ≤6.0	>6.0, ≤7.0	>7.0
<b>Asymptomatic hyperuricaemia</b>					
	n=7049	n=88	n=249	n=358	n=526
Time to first gout flare in period 2					
Median time (95% CI)	–	–	–	–	–
HR (95% CI) versus ULT (–)*	–	0.64 (0.32 to 1.29)	0.45 (0.27 to 0.76)	0.97 (0.71 to 1.32)	1.29 (1.04 to 1.61)
P value versus ULT (–)*	–	0.216	0.002	0.839	0.022
Incidence rate of gout flare in period 2					
Incidence rate (95% CI)†, flares/person-year	0.035 (0.024 to 0.051)	0.023 (0.010 to 0.053)	0.014 (0.008 to 0.027)	0.032 (0.019 to 0.053)	0.043 (0.027 to 0.068)
RR (95% CI) versus ULT (–)†	–	0.65 (0.31 to 1.39)	0.40 (0.24 to 0.68)	0.91 (0.64 to 1.31)	1.23 (0.93 to 1.63)
P value versus ULT (–)†	–	0.269	0.001	0.624	0.141
<b>Gout</b>					
	n=107	n=33	n=68	n=102	n=201
Time to first gout flare in period 2					
Median time (95% CI)	158.3 (120.6 to –)	127.6 (14.9 to –)	– (164.6 to –)	– (176.3 to –)	125.6 (87.3 to 157.1)
HR (95% CI) versus ULT (–)*	–	1.22 (0.71 to 2.10)	0.65 (0.40 to 1.05)	0.76 (0.51 to 1.14)	1.23 (0.89 to 1.70)
P value versus ULT (–)*	–	0.465	0.078	0.179	0.207
Incidence rate of gout flare in period 2					
Incidence rate (95% CI)†, flares/person-year	0.298 (0.096 to 0.924)	0.263 (0.077 to 0.894)	0.162 (0.051 to 0.516)	0.273 (0.091 to 0.823)	0.286 (0.094 to 0.869)
RR (95% CI) versus ULT (–)†	–	0.88 (0.48 to 1.63)	0.54 (0.33 to 0.91)	0.92 (0.59 to 1.42)	0.96 (0.66 to 1.39)
P value versus ULT (–)†	–	0.690	0.020	0.694	0.822

\*Multivariable analysis using Cox proportional-hazards model. Sex, number of comorbidities of interest in period 1, and age, eGFR, and sUA control at the follow-up date were included in the model.

†Multivariable analysis using negative binomial regression model. Sex, number of comorbidities of interest in period 1, and age, eGFR, and sUA control at the follow-up date were included in the model.

RR, relative incidence rate; sUA, serum uric acid levels; ULT, urate-lowering therapy.

uric acid measurement, and meant that variable risk levels were represented within the patient group with gout. The nature of this study placed limitations on our ability to adjust for these confounding factors. Finally, although multivariable analysis and propensity score analyses were adjusted for confounding factors, the study may have been limited by unrecognised or unmeasured confounding factors.

Our study used real-world data to demonstrate that the occurrence of gout flare in asymptomatic hyperuricaemia and gout tended to be lower for patients who were prescribed ULT and achieved sUA ≤6.0 mg/dL than for those who received ULT treatment but whose sUA remained >6.0 mg/dL and for those who were untreated. Further exploration is warranted regarding the benefits and drawbacks of introducing ULT as a treatment for asymptomatic hyperuricaemia, both clinically and from the perspective of health economics.

**Correction notice** This article has been corrected since it published Online First. The duplicate supplemental file has been removed.

**Acknowledgements** Review of the statistical analysis plan, clinical study report and manuscript was provided by Hirotaka Mano, Pharmaceutical Development Administration Department, Teijin Pharma Limited. Medical writing support was provided by EDIT, Inc. (Tokyo, Japan) and was funded by Teijin Pharma Limited.

**Contributors** RK drafted the manuscript, and AN performed the statistical analysis. All authors participated in the design of study and the analysis and/or interpretation of data. All authors have read and approved this final version of the manuscript for submission.

**Funding** This study was supported by Teijin Pharma Limited.

**Competing interests** RK, AN and HH are employees of Teijin Pharma Limited, and HY reports grants and personal fees from Teijin Pharma Limited.

**Patient consent for publication** Not required.

**Ethics approval** Since these data were thoroughly anonymised, ethics approval was not required.

**Provenance and peer review** Not commissioned; externally peer reviewed.

**Data availability statement** No data are available.

**Supplemental material** This content has been supplied by the author(s). It has not been vetted by BMJ Publishing Group Limited (BMJ) and may not have been peer-reviewed. Any opinions or recommendations discussed are solely those of the author(s) and are not endorsed by BMJ. BMJ disclaims all liability and responsibility arising from any reliance placed on the content. Where the content includes any translated material, BMJ does not warrant the accuracy and reliability of the translations (including but not limited to local regulations, clinical guidelines, terminology, drug names and drug dosages), and is not responsible for any error and/or omissions arising from translation and adaptation or otherwise.

**Open access** This is an open access article distributed in accordance with the Creative Commons Attribution Non Commercial (CC BY-NC 4.0) license, which permits others to distribute, remix, adapt, build upon this work non-commercially, and license their derivative works on different terms, provided the original work is properly cited, appropriate credit is given, any changes made indicated, and the use is non-commercial. See: <http://creativecommons.org/licenses/by-nc/4.0/>.

**ORCID iD**

Ruriko Koto <http://orcid.org/0000-0001-9201-1273>

## REFERENCES

- 1 Kiltz U, Smolen J, Bardin T, *et al.* Treat-to-target (T2T) recommendations for gout. *Ann Rheum Dis* 2017;76:632–8.
- 2 Yamanaka H, The guideline revising committee of the Japanese Society of Gout and Nucleic Acid Metabolism. Essence of the revised guideline for the management of hyperuricemia and gout. *Japan Med Assoc J* 2012;55:324–9.
- 3 Jackson R, Shiozawa A, Buysman EK, *et al.* Flare frequency, healthcare resource utilization and costs among patients with gout in a managed care setting: a retrospective medical claims-based analysis. *BMJ Open* 2015;5:e007214.
- 4 FitzGerald JD, Dalbeth N, Mikuls T, *et al.* 2020 American College of Rheumatology guideline for the management of gout. *Arthritis Care Res* 2020;72:744–60.
- 5 Richette P, Doherty M, Pascual E, *et al.* 2016 updated EULAR evidence-based recommendations for the management of gout. *Ann Rheum Dis* 2017;76:29–42.
- 6 Hisatome I, Ichida K, Mineo I, *et al.* Japanese Society of gout and nucleic acids 2019 guidelines for management of hyperuricemia and gout 3 edition. *Gout and Uric Nucleic Acids* 2020;44 suppl:1–40.
- 7 Rothenbacher D, Primates P, Ferreira A, *et al.* Frequency and risk factors of gout flares in a large population-based cohort of incident gout. *Rheumatology* 2011;50:973–81.
- 8 Dalbeth N, Saag KG, Palmer WE, *et al.* Effects of febuxostat in early gout: a randomized, double-blind, placebo-controlled study. *Arthritis Rheumatol* 2017;69:2386–95.
- 9 Koto R, Nakajima A, Horiuchi H, *et al.* Real-world treatment of gout and asymptomatic hyperuricemia: a cross-sectional study of Japanese health insurance claims data. *Mod Rheumatol* 2021;31:261–9.
- 10 Kimura K, Hosoya T, Uchida S, *et al.* Febuxostat therapy for patients with stage 3 CKD and asymptomatic hyperuricemia: a randomized trial. *Am J Kidney Dis* 2018;72:798–810.
- 11 Kojima S, Matsui K, Hiramitsu S, *et al.* Febuxostat for cerebral and cardiovascular events prevention study. *Eur Heart J* 2019;40:1778–86.
- 12 Tanaka A, Taguchi I, Teragawa H, *et al.* Febuxostat does not delay progression of carotid atherosclerosis in patients with asymptomatic hyperuricemia: a randomized, controlled trial. *PLoS Med* 2020;17:e1003095.
- 13 Kimura S, Sato T, Ikeda S, *et al.* Development of a database of health insurance claims: standardization of disease classifications and anonymous record linkage. *J Epidemiol* 2010;20:413–9.
- 14 Yamanaka H, Tamaki S, Ide Y, *et al.* Stepwise dose increase of febuxostat is comparable with colchicine prophylaxis for the prevention of gout flares during the initial phase of urate-lowering therapy: results from FORTUNE-1, a prospective, multicentre randomised study. *Ann Rheum Dis* 2018;77:270–6.
- 15 Becker MA, Schumacher HR, Jr., Wortmann RL, *et al.* Febuxostat compared with allopurinol in patients with hyperuricemia and gout. *N Engl J Med* 2005;353:2450–61.
- 16 Koto R, Nakajima A, Horiuchi H, *et al.* Factors associated with achieving target serum uric acid level and occurrence of gouty arthritis: a retrospective observational study of Japanese health insurance claims data. *Pharmacoepidemiol Drug Saf* 2021;30:157–68.
- 17 Liu P, Wang H, Zhang F, *et al.* The effects of allopurinol on the carotid intima-media thickness in patients with type 2 diabetes and asymptomatic hyperuricemia: a three-year randomized parallel-controlled study. *Intern Med* 2015;54:2129–37.
- 18 Gonzalez-Martin G, Cano J, Carriazo S, *et al.* The dirty little secret of urate-lowering therapy: useless to stop chronic kidney disease progression and may increase mortality. *Clin Kidney J* 2020;13:936–47.
- 19 Badve SV, Pascoe EM, Tikun A, *et al.* Effects of allopurinol on the progression of chronic kidney disease. *N Engl J Med* 2020;382:2504–13.
- 20 Doria A, Galecki AT, Spino C, *et al.* Serum urate lowering with allopurinol and kidney function in type 1 diabetes. *N Engl J Med* 2020;382:2493–503.



## Supplemental Files

### **Serum uric acid control for prevention of gout flare in patients with asymptomatic hyperuricaemia: a retrospective cohort study of health insurance claims and medical check-up data in Japan**

#### **Contents:**

##### Supplemental Methods

Methods of propensity score analysis	2
--------------------------------------	---

##### Supplemental Tables

Table S1 List of definitions	3
Table S2 Subject characteristics by disease status	4
Table S3 Cox proportional hazards model analysis of the time to first gout flare in period 2	5
Table S4 Negative binomial regression model analysis for incidence rate of gout flare (flares/person-year) in period 2	6
Table S5 Distribution of the baseline characteristics between groups in the original, IPW, and PS matched cohorts (subjects with asymptomatic hyperuricaemia who were prescribed ULT)	7
Table S6 Hazard ratio for sUA $\leq 6.0$ mg/dL compared to $>6.0$ mg/dL in subjects with asymptomatic hyperuricaemia (Cox proportional hazards model)	8

##### Supplemental Figure

Figure S1 Kaplan-Meier curves for time to first gout flare in period 2 (subjects with asymptomatic hyperuricaemia who were prescribed ULT)	9
--	---

## Supplemental Methods

### Methods of propensity score analysis

A multivariate logistic regression model was used to estimate the propensity score. Explanatory variables were age and estimated glomerular filtration rate (eGFR) at the follow-up date, number of measurements of serum uric acid levels (sUA) in period 1, number of comorbidities of interest in period 1, sex, presence of comorbidities in period 1 (hypertension, type 2 diabetes, ischemic heart disease, heart failure, cerebrovascular disease, hyperlipidaemia), and drug prescriptions in period 1 (antihyperlipidaemic drug, angiotensin-converting enzyme (ACE) inhibitor, angiotensin II receptor blocker (ARB), diuretic drug, antidiabetic drug). Goodness of fit of the propensity score was evaluated by the Hosmer-Lemeshow test and the C statistic. If eGFR measurements were missing for the follow-up date, values from the index date were used. Because goodness of fit was improved by adding quadratic terms to the explanatory variables, the propensity score was estimated from a model that included those quadratic terms.

We conducted 3 analyses to estimate effects: inverse probability weighting (IPW), propensity score matching (PS match), and analysis of the original cohort. IPW using the propensity score was employed to estimate the average treatment effect (ATE), as well as average treatment effect for the treated (ATT) in the groups having sUA  $\leq 6.0$  mg/dL, at the follow-up date. For PS match, 1:1 matching protocol without replacement (greedy nearest neighbour matching) was used, with calliper width equal to 0.2 of the standard deviation of the logit of the propensity score. Analysis of the original cohort was also performed without using the propensity score. The primary analysis was the ATE, estimated by the IPW. Other analyses were performed to confirm the robustness of the primary analysis findings.

Before and after the propensity score analysis, standardized differences were calculated to assess between-group balance for all baseline characteristics. For a given covariate, standardized differences of  $<0.1$  indicate a relatively small imbalance. Each analysis used Kaplan-Meier curves to estimate the time to first gout flare in period 2. Univariate analysis was performed using the Cox proportional hazards model, with group (sUA  $\leq 6.0$  mg/dL or  $>6.0$  mg/dL) as a covariate. Multivariable analysis was also applied to the original cohort.

## Supplemental Tables

**Table S1** List of definitions

---

### Definitions of patient characteristics

- Hypertension: ICD10 code I10-I15 (Hypertensive diseases)
- Type 2 diabetes : ICD10 code E11 (Type 2 diabetes mellitus), E12 (Malnutrition-related diabetes mellitus), E13 (Other specified diabetes mellitus) or E14 (Unspecified diabetes mellitus)
- Ischemic heart disease: ICD10 code I20-I25 (Ischemic heart diseases)
- Heart failure: ICD10 code I50 (Heart failure)
- Cerebrovascular disease: ICD10 code I60-I69 (Cerebrovascular diseases)
- Hyperlipidaemia: ICD10 code E78 (Disorders of lipoprotein metabolism and other lipidaemias)

### Definitions of drugs

- Antihyperlipidaemic drug: ATC codes C10A (Cholesterol and triglyceride regulating preparations), C10B (Anti-atheroma preparations of natural origin), or C11A (Lipid-regulating cardiovascular multitherapy combination products)
- ACE inhibitor: ATC code C09A (ACE inhibitors, plain)
- ARB: ATC code C09C (Angiotensin II antagonists, plain), C09D1 (Angiotensin II antagonists combinations with antihypertensive (C2) and/or diuretics) or C09D3 (Angiotensin II antagonists combinations with calcium antagonists)
- Diuretic drug: ATC code C03 (Diuretics)
- Antidiabetic drug: ATC code A10C (Human insulins and analogues), A10H (Sulphonylurea antidiabetic), A10J (Biguanide antidiabetics), A10K (Glitazone antidiabetics), A10L (Alpha-glucosidase inhibitor antidiabetics), A10M (Glinide antidiabetics), A10N (DPP-IV inhibitor antidiabetics), A10P (SGLT2 inhibitor antidiabetics), A10S (GLP-1 agonist antidiabetics), or A10X (Other drugs used in diabetes).

---

ACE, angiotensin-converting enzyme; ARB, angiotensin II receptor blocker; ATC, anatomical therapeutic chemical; DPP-IV, dipeptidyl peptidase IV; GLP-1, glucagon like peptide-1; ICD, international statistical classification of diseases and related health problems; SGLT2, sodium-glucose cotransporter 2.

Table S2 Subject characteristics by disease status

	Asymptomatic hyperuricaemia			Gout			No treatment required	All required
	ULT (+)		ULT (-)	ULT (+)		ULT (-)	ULT (-)	
	sUA ≤6.0 mg/dL n=337	sUA >6.0 mg/dL n=884	sUA ≥8.0 mg/dL n=7049	sUA ≤6.0 mg/dL n=101	sUA >6.0 mg/dL n=303	sUA ≥8.0 mg/dL n=107	sUA <8.0 mg/dL n=10 480	
<b>Age, years</b>								
Mean±SD	49.0 ± 8.8	46.2 ± 9.3	43.8 ± 9.2	50.1 ± 8.6	46.6 ± 8.8	45.5 ± 8.6	44.1 ± 9.5	44.2 ± 9.4
n (%)								
18-19	0	0	0	0	0	0	0	0
20-29	4 (1.2)	40 (4.5)	432 (6.1)	2 (2.0)	9 (3.0)	2 (1.9)	720 (6.9)	1209 (6.3)
30-39	47 (13.9)	152 (17.2)	1785 (25.3)	10 (9.9)	51 (16.8)	23 (21.5)	2495 (23.8)	4563 (23.7)
40-49	114 (33.8)	372 (42.1)	2904 (41.2)	35 (34.7)	134 (44.2)	49 (45.8)	4148 (39.6)	7756 (40.3)
50-59	136 (40.4)	261 (29.5)	1648 (23.4)	42 (41.6)	82 (27.1)	26 (24.3)	2629 (25.1)	4824 (25.0)
60-69	35 (10.4)	57 (6.4)	264 (3.7)	11 (10.9)	26 (8.6)	7 (6.5)	468 (4.5)	868 (4.5)
≥70	1 (0.3)	2 (0.2)	16 (0.2)	1 (1.0)	1 (0.3)	0	20 (0.2)	41 (0.2)
<b>Sex, n (%)</b>								
Male	330 (97.9)	872 (98.6)	6952 (98.6)	100 (99.0)	301 (99.3)	107 (100.0)	10 262 (97.9)	18 924 (98.3)
Female	7 (2.1)	12 (1.4)	97 (1.4)	1 (1.0)	2 (0.7)	0	218 (2.1)	337 (1.7)
<b>eGFR, mL/min/1.73m<sup>2</sup>*</b>								
Mean±SD	72.93 ± 17.21	71.53 ± 15.11	74.45 ± 14.26	73.11 ± 12.07	72.43 ± 14.89	72.77 ± 12.83	78.52 ± 14.21	76.46 ± 14.51
n (%)								
≥90	40 (11.9)	93 (10.5)	897 (12.7)	7 (6.9)	36 (11.9)	11 (10.3)	2004 (19.1)	3088 (16.0)
≥60, <90	243 (72.1)	603 (68.2)	5226 (74.1)	80 (79.2)	212 (70.0)	81 (75.7)	7726 (73.7)	14 171 (73.6)
≥30, <60	46 (13.6)	183 (20.7)	910 (12.9)	14 (13.9)	55 (18.2)	15 (14.0)	737 (7.0)	1960 (10.2)
≥15, <30	3 (0.9)	4 (0.5)	10 (0.1)	0	0	0	6 (<0.1)	23 (0.1)
<15	5 (1.5)	1 (0.1)	6 (<0.1)	0	0	0	7 (<0.1)	19 (<0.1)
≥60	283 (84.0)	696 (78.7)	6123 (86.9)	87 (86.1)	248 (81.8)	92 (86.0)	9730 (92.8)	17 259 (89.6)
<60	54 (16.0)	188 (21.3)	926 (13.1)	14 (13.9)	55 (18.2)	15 (14.0)	750 (7.2)	2002 (10.4)
<b>sUA, mg/dL</b>								
Mean±SD	5.30 ± 0.65	7.48 ± 0.99	8.64 ± 0.61	5.28 ± 0.64	7.78 ± 1.21	8.74 ± 0.59	7.20 ± 0.57	7.71 ± 1.00
n (%)								
<8	337 (100.0)	617 (69.8)	0	101 (100.0)	180 (59.4)	0	10 480 (100.0)	11 715 (60.8)
≥8, <9	0	199 (22.5)	5393 (76.5)	0	73 (24.1)	77 (72.0)	0	5742 (29.8)
≥9, <10	0	56 (6.3)	1390 (19.7)	0	34 (11.2)	25 (23.4)	0	1505 (7.8)
≥10	0	12 (1.4)	266 (3.8)	0	16 (5.3)	5 (4.7)	0	299 (1.6)
<b>Comorbidities of interest, n (%)</b>								
Hypertension	173 (51.3)	339 (38.3)	990 (14.0)	29 (28.7)	55 (18.2)	17 (15.9)	1550 (14.8)	3153 (16.4)
Type 2 diabetes	62 (18.4)	134 (15.2)	391 (5.5)	11 (10.9)	28 (9.2)	12 (11.2)	703 (6.7)	1341 (7.0)
Ischemic heart disease	19 (5.6)	37 (4.2)	149 (2.1)	5 (5.0)	7 (2.3)	3 (2.8)	213 (2.0)	433 (2.2)
Heart failure	16 (4.7)	36 (4.1)	124 (1.8)	4 (4.0)	10 (3.3)	2 (1.9)	184 (1.8)	376 (2.0)
Cerebrovascular disease	20 (5.9)	35 (4.0)	79 (1.1)	3 (3.0)	6 (2.0)	3 (2.8)	180 (1.7)	326 (1.7)
Hyperlipidaemia	196 (58.2)	458 (51.8)	984 (14.0)	32 (31.7)	78 (25.7)	19 (17.8)	1716 (16.4)	3483 (18.1)
<b>Number of comorbidities, n (%)</b>								
0	61 (18.1)	228 (25.8)	4801 (68.1)	43 (42.6)	158 (52.1)	66 (61.7)	7291 (69.6)	12 648 (65.7)
1	116 (34.4)	306 (34.6)	1404 (19.9)	33 (32.7)	90 (29.7)	27 (25.2)	1872 (17.9)	3848 (20.0)
2	84 (24.9)	205 (23.2)	493 (7.0)	14 (13.9)	28 (9.2)	4 (3.7)	785 (7.5)	1613 (8.4)
3	52 (15.4)	94 (10.6)	214 (3.0)	7 (6.9)	16 (5.3)	4 (3.7)	342 (3.3)	729 (3.8)
4	20 (5.9)	32 (3.6)	86 (1.2)	4 (4.0)	10 (3.3)	6 (5.6)	136 (1.3)	294 (1.5)
5	4 (1.2)	14 (1.6)	41 (0.6)	0	1 (0.3)	0	41 (0.4)	101 (0.5)
6	0	4 (0.5)	8 (0.1)	0	0	0	12 (0.1)	24 (0.1)
7	0	1 (0.1)	2 (<0.1)	0	0	0	1 (<0.1)	4 (<0.1)
<b>Concomitant medications, n (%)</b>								
Antihyperlipidaemic drug	156 (46.3)	281 (31.8)	458 (6.5)	20 (19.8)	47 (15.5)	9 (8.4)	827 (7.9)	1798 (9.3)
ACE inhibitor	9 (2.7)	19 (2.1)	55 (0.8)	1 (1.0)	4 (1.3)	0	71 (0.7)	159 (0.8)
ARB	115 (34.1)	222 (25.1)	618 (8.8)	17 (16.8)	27 (8.9)	12 (11.2)	960 (9.2)	1971 (10.2)
Diuretic drug	18 (5.3)	53 (6.0)	141 (2.0)	2 (2.0)	3 (1.0)	3 (2.8)	186 (1.8)	406 (2.1)
Antidiabetic drug	24 (7.1)	47 (5.3)	140 (2.0)	1 (1.0)	5 (1.7)	6 (5.6)	249 (2.4)	472 (2.5)

\*eGFR (male) =  $194 \times \text{sCr}^{-1.094} \times \text{age}^{-0.287}$ , eGFR (female) =  $194 \times \text{sCr}^{-1.094} \times \text{age}^{-0.287} \times 0.739$ . Data at the index date were used if data at the follow-up date were missing.

ACE, angiotensin-converting enzyme; ARB, angiotensin II receptor blocker; eGFR, estimated glomerular filtration rate; SD, standard deviation; sUA, serum uric acid levels; ULT, urate-lowering therapy.

**Table S3** Cox proportional hazards model analysis of the time to first gout flare in period 2**(A) Subjects with asymptomatic hyperuricaemia**

Parameter category	n	Median time (95% CI)	Unadjusted HR (95% CI)	Adjusted† HR (95% CI)	P value
<b>Age, years</b>					
18-29	476	– (–, –)	1.00	1.00	
30-39	1984	– (–, –)	1.54 (1.10, 2.16)	1.55 (1.10, 2.18)	0.012
40-49	3390	– (–, –)	2.05 (1.48, 2.83)	2.09 (1.49, 2.91)	<0.001
50-59	2045	– (–, –)	2.14 (1.53, 2.98)	2.32 (1.64, 3.27)	<0.001
≥60	375	– (–, –)	2.17 (1.44, 3.27)	2.48 (1.61, 3.82)	<0.001
<b>Sex</b>					
Male	8154	– (–, –)	1.00	1.00	
Female	116	– (–, –)	0.43 (0.20, 0.90)	0.42 (0.20, 0.89)	0.023
<b>eGFR, mL/min/1.73m<sup>2</sup>*</b>					
≥90	1030	– (–, –)	1.00	1.00	
≥60, <90	6072	– (–, –)	1.30 (1.07, 1.57)	1.11 (0.91, 1.35)	0.304
<60	1168	– (–, –)	1.67 (1.33, 2.09)	1.70 (1.30, 2.22)	<0.001
<b>Number of comorbidities of interest</b>					
0	5090	– (–, –)	1.00	1.00	
1	1826	– (–, –)	1.07 (0.93, 1.23)	0.81 (0.69, 0.96)	0.016
2	782	– (–, –)	0.87 (0.70, 1.07)	0.66 (0.52, 0.83)	<0.001
3	360	– (–, –)	0.68 (0.49, 0.95)	0.49 (0.34, 0.70)	<0.001
≥4	212	– (–, –)	0.66 (0.42, 1.03)	0.43 (0.27, 0.69)	<0.001
<b>sUA control</b>					
ULT (–), sUA (mg/dL) ≥8.0	7049	– (–, –)	1.00	1.00	
ULT (+), sUA (mg/dL) ≤5.0	88	– (–, –)	0.58 (0.29, 1.15)	0.64 (0.32, 1.29)	0.216
ULT (+), 5.0<sUA (mg/dL) ≤6.0	249	– (–, –)	0.40 (0.24, 0.66)	0.45 (0.27, 0.76)	0.002
ULT (+), 6.0<sUA (mg/dL) ≤7.0	358	– (–, –)	0.86 (0.64, 1.16)	0.97 (0.71, 1.32)	0.839
ULT (+), sUA (mg/dL) >7.0	526	– (–, –)	1.18 (0.95, 1.46)	1.29 (1.04, 1.61)	0.022

**(B) Subjects with gout**

Parameter category	n	Median time (95% CI)	Unadjusted HR (95% CI)	Adjusted† HR (95% CI)	P value
<b>Age, years</b>					
18-29	13	76.0 (26.0, –)	1.00	1.00	
30-39	84	– (187.7, –)	0.58 (0.27, 1.24)	0.59 (0.27, 1.28)	0.178
40-49	218	146.9 (94.9, 186.7)	0.89 (0.43, 1.81)	0.99 (0.47, 2.08)	0.977
50-59	150	164.6 (114.6, –)	0.80 (0.39, 1.65)	0.99 (0.46, 2.12)	0.970
≥60	46	142.1 (72.4, –)	0.78 (0.35, 1.75)	1.09 (0.45, 2.60)	0.851
<b>Sex</b>					
Male	508	164.6 (139.9, 220.4)	1.00	1.00	
Female	3	– (22.0, –)	0.61 (0.09, 4.35)	0.80 (0.11, 5.93)	0.826
<b>eGFR, mL/min/1.73m<sup>2</sup>*</b>					
≥90	54	112.7 (50.3, –)	1.00	1.00	
≥60, <90	373	169.7 (131.6, 220.4)	0.89 (0.61, 1.32)	0.81 (0.54, 1.22)	0.314
<60	84	164.6 (133.4, –)	0.80 (0.50, 1.28)	0.64 (0.37, 1.10)	0.109
<b>Number of comorbidities of interest</b>					
0	267	169.7 (128.6, 216.7)	1.00	1.00	
1	150	158.3 (110.3, –)	1.02 (0.78, 1.35)	1.09 (0.81, 1.48)	0.572
2	46	– (99.4, –)	0.81 (0.50, 1.32)	0.82 (0.49, 1.38)	0.454
3	27	70.6 (18.0, –)	1.15 (0.66, 1.99)	1.13 (0.64, 2.01)	0.667
≥ 4	21	164.6 (71.1, –)	0.96 (0.52, 1.78)	1.08 (0.55, 2.12)	0.815
<b>sUA control</b>					
ULT (–), sUA (mg/dL) ≥8.0	107	158.3 (120.6, –)	1.00	1.00	
ULT (+), sUA (mg/dL) ≤5.0	33	127.6 (14.9, –)	1.24 (0.73, 2.12)	1.22 (0.71, 2.10)	0.465
ULT (+), 5.0<sUA (mg/dL) ≤6.0	68	– (164.6, –)	0.70 (0.44, 1.11)	0.65 (0.40, 1.05)	0.078
ULT (+), 6.0<sUA (mg/dL) ≤7.0	102	– (176.3, –)	0.78 (0.53, 1.17)	0.76 (0.51, 1.14)	0.179
ULT (+), sUA (mg/dL) >7.0	201	125.6 (87.3, 157.1)	1.23 (0.89, 1.69)	1.23 (0.89, 1.70)	0.207

\*eGFR (male) =  $194 \times sCr^{-1.094} \times age^{-0.287}$ , eGFR (female) =  $194 \times sCr^{-1.094} \times age^{-0.287} \times 0.739$ . Data at the index date were used if data at the follow-up date were missing.

† Sex, number of comorbidities of interest in period 1, and age, eGFR, and sUA control at the follow-up date were included in the model.

CI, confidence interval; eGFR, estimated glomerular filtration rate; HR, hazard ratio; sUA, serum uric acid levels; ULT, urate-lowering therapy.



**Table S4** Negative binomial regression model analysis for incidence rate of gout flare (flares/person-year) in period 2**(A) Subjects with asymptomatic hyperuricaemia**

Parameter category	n	Univariable		Multivariable <sup>†</sup>		P value
		Incidence rate (95% CI), flares/person-year	RR (95% CI)	Incidence rate (95% CI), flares/person-year	RR (95% CI)	
<b>Age, years</b>						
18-29	476	0.040 (0.029, 0.056)	1.00	0.015 (0.009, 0.025)	1.00	
30-39	1984	0.060 (0.052, 0.069)	1.47 (1.03, 2.11)	0.023 (0.014, 0.035)	1.52 (1.06, 2.17)	0.023
40-49	3390	0.081 (0.073, 0.090)	2.00 (1.42, 2.82)	0.031 (0.021, 0.048)	2.12 (1.49, 3.02)	<0.001
50-59	2045	0.092 (0.080, 0.105)	2.26 (1.59, 3.22)	0.038 (0.025, 0.058)	2.56 (1.77, 3.71)	<0.001
≥60	375	0.094 (0.068, 0.130)	2.33 (1.47, 3.69)	0.040 (0.024, 0.066)	2.67 (1.65, 4.32)	<0.001
<b>Sex</b>						
Male	8154	0.077 (0.072, 0.083)	1.00	0.044 (0.035, 0.056)	1.00	
Female	116	0.033 (0.016, 0.067)	0.43 (0.21, 0.87)	0.017 (0.008, 0.036)	0.39 (0.19, 0.79)	0.009
<b>eGFR, mL/min/1.73m<sup>2</sup>*</b>						
≥90	1030	0.064 (0.052, 0.078)	1.00	0.024 (0.015, 0.038)	1.00	
≥60, <90	6072	0.074 (0.068, 0.081)	1.17 (0.94, 1.45)	0.023 (0.015, 0.036)	0.97 (0.77, 1.22)	0.799
<60	1168	0.101 (0.085, 0.121)	1.59 (1.21, 2.08)	0.038 (0.024, 0.059)	1.58 (1.15, 2.17)	0.004
<b>Number of comorbidities of interest</b>						
0	5090	0.078 (0.072, 0.085)	1.00	0.044 (0.028, 0.068)	1.00	
1	1826	0.082 (0.071, 0.095)	1.05 (0.89, 1.25)	0.033 (0.021, 0.052)	0.76 (0.62, 0.93)	0.007
2	782	0.071 (0.057, 0.089)	0.91 (0.71, 1.16)	0.031 (0.020, 0.049)	0.71 (0.54, 0.93)	0.013
3	360	0.057 (0.040, 0.082)	0.73 (0.51, 1.06)	0.024 (0.014, 0.040)	0.54 (0.37, 0.81)	0.002
≥ 4	212	0.044 (0.027, 0.072)	0.57 (0.34, 0.93)	0.015 (0.008, 0.028)	0.34 (0.20, 0.58)	<0.001
<b>sUA control</b>						
ULT (-), sUA (mg/dL) ≥8.0	7049	0.078 (0.073, 0.084)	1.00	0.035 (0.024, 0.051)	1.00	
ULT (+), sUA (mg/dL) ≤5.0	88	0.048 (0.023, 0.102)	0.62 (0.29, 1.31)	0.023 (0.010, 0.053)	0.65 (0.31, 1.39)	0.269
ULT (+), 5.0<sUA (mg/dL) ≤6.0	249	0.028 (0.017, 0.046)	0.36 (0.21, 0.59)	0.014 (0.008, 0.027)	0.40 (0.24, 0.68)	0.001
ULT (+), 6.0<sUA (mg/dL) ≤7.0	358	0.063 (0.044, 0.089)	0.81 (0.56, 1.15)	0.032 (0.019, 0.053)	0.91 (0.64, 1.31)	0.624
ULT (+), sUA (mg/dL) >7.0	526	0.092 (0.071, 0.120)	1.18 (0.90, 1.55)	0.043 (0.027, 0.068)	1.23 (0.93, 1.63)	0.141

**(B) Subjects with gout**

Parameter category	n	Univariable		Multivariable <sup>†</sup>		P value
		Incidence rate (95% CI), flares/person-year	RR (95% CI)	Incidence rate (95% CI), flares/person-year	RR (95% CI)	
<b>Age, years</b>						
18-29	13	0.446 (0.188, 1.061)	1.00	0.245 (0.061, 0.982)	1.00	
30-39	84	0.302 (0.211, 0.432)	0.68 (0.27, 1.73)	0.170 (0.054, 0.539)	0.69 (0.27, 1.76)	0.442
40-49	218	0.503 (0.408, 0.621)	1.13 (0.46, 2.75)	0.307 (0.101, 0.932)	1.25 (0.51, 3.04)	0.622
50-59	150	0.446 (0.345, 0.578)	1.00 (0.41, 2.47)	0.271 (0.091, 0.804)	1.10 (0.44, 2.74)	0.832
≥60	46	0.426 (0.265, 0.687)	0.96 (0.36, 2.57)	0.286 (0.089, 0.916)	1.16 (0.42, 3.21)	0.769
<b>Sex</b>						
Male	508	0.447 (0.388, 0.514)	1.00	0.427 (0.314, 0.580)	1.00	
Female	3	0.151 (0.018, 1.265)	0.34 (0.04, 2.84)	0.147 (0.017, 1.244)	0.34 (0.04, 2.87)	0.324
<b>eGFR, mL/min/1.73m<sup>2</sup>*</b>						
≥90	54	0.467 (0.305, 0.716)	1.00	0.319 (0.099, 1.028)	1.00	
≥60, <90	373	0.455 (0.386, 0.536)	0.97 (0.62, 1.54)	0.271 (0.090, 0.818)	0.85 (0.53, 1.35)	0.490
<60	84	0.385 (0.269, 0.550)	0.82 (0.47, 1.44)	0.183 (0.059, 0.566)	0.57 (0.31, 1.05)	0.072
<b>Number of comorbidities of interest</b>						
0	267	0.425 (0.351, 0.516)	1.00	0.202 (0.068, 0.603)	1.00	
1	150	0.391 (0.301, 0.507)	0.92 (0.66, 1.27)	0.197 (0.065, 0.600)	0.97 (0.68, 1.39)	0.876
2	46	0.580 (0.371, 0.908)	1.36 (0.84, 2.22)	0.309 (0.096, 0.993)	1.53 (0.91, 2.55)	0.105
3	27	0.804 (0.452, 1.430)	1.89 (1.03, 3.47)	0.439 (0.130, 1.480)	2.17 (1.13, 4.18)	0.021
≥ 4	21	0.330 (0.160, 0.678)	0.77 (0.37, 1.63)	0.183 (0.050, 0.677)	0.91 (0.41, 2.01)	0.807
<b>sUA control</b>						
ULT (-), sUA (mg/dL) ≥8.0	107	0.495 (0.366, 0.669)	1.00	0.298 (0.096, 0.924)	1.00	
ULT (+), sUA (mg/dL) ≤5.0	33	0.436 (0.253, 0.754)	0.88 (0.47, 1.64)	0.263 (0.077, 0.894)	0.88 (0.48, 1.63)	0.690
ULT (+), 5.0<sUA (mg/dL) ≤6.0	68	0.278 (0.185, 0.419)	0.56 (0.34, 0.93)	0.162 (0.051, 0.516)	0.54 (0.33, 0.91)	0.020
ULT (+), 6.0<sUA (mg/dL) ≤7.0	102	0.455 (0.333, 0.622)	0.92 (0.60, 1.42)	0.273 (0.091, 0.823)	0.92 (0.59, 1.42)	0.694
ULT (+), sUA (mg/dL) >7.0	201	0.470 (0.377, 0.587)	0.95 (0.65, 1.38)	0.286 (0.094, 0.869)	0.96 (0.66, 1.39)	0.822

\*eGFR (male) =  $194 \times sCr^{-1.094} \times age^{-0.287}$ , eGFR (female) =  $194 \times sCr^{-1.094} \times age^{-0.287} \times 0.739$ . Data at the index date were used if data at the follow-up date were missing.

<sup>†</sup> Sex, number of comorbidities of interest in period 1, and age, eGFR, and sUA control at the follow-up date were included in the model.

CI, confidence interval; eGFR, estimated glomerular filtration rate; RR, relative incidence rate; sUA, serum uric acid levels; ULT, urate-lowering therapy.

**Table S5** Distribution of baseline characteristics between groups in the original, IPW, and PS matched cohorts (subjects with asymptomatic hyperuricaemia who were prescribed ULT)

	Original cohort			IPW cohort (ATE)			IPW cohort (ATT)			PS matched cohort		
	sUA		Standardized difference	sUA		Standardized difference	sUA		Standardized difference	sUA		Standardized difference
	≤6.0 mg/dL	>6.0 mg/dL		≤6.0 mg/dL	>6.0 mg/dL		≤6.0 mg/dL	>6.0 mg/dL		≤6.0 mg/dL	>6.0 mg/dL	
	n=337	n=884		n=1184	n=1232		n=337	n=348		n=336	n=336	
<b>Age, years</b>												
Mean±SD	49.0 ± 8.8	46.2 ± 9.3	0.32	47.6 ± 9.2	47.1 ± 9.3	0.05	49.0 ± 8.8	49.4 ± 8.9	-0.04	49.0 ± 8.8	49.1 ± 8.3	-0.01
n (%)												
18-19	0	0	-	0	0	-	0	0	-	0	0	-
20-29	4 (1.2)	40 (4.5)	-0.20	31 (2.6)	47 (3.8)	-0.07	4 (1.2)	7 (1.9)	-0.06	4 (1.2)	6 (1.8)	-0.05
30-39	47 (13.9)	152 (17.2)	-0.09	211 (17.8)	187 (15.2)	0.07	47 (13.9)	35 (10.2)	0.12	47 (14.0)	29 (8.6)	0.17
40-49	114 (33.8)	372 (42.1)	-0.17	413 (34.9)	501 (40.6)	-0.12	114 (33.8)	129 (37.0)	-0.07	113 (33.6)	133 (39.6)	-0.12
50-59	136 (40.4)	261 (29.5)	0.23	425 (35.9)	399 (32.4)	0.07	136 (40.4)	138 (39.7)	0.01	136 (40.5)	136 (40.5)	0.00
60-69	35 (10.4)	57 (6.4)	0.14	103 (8.7)	94 (7.7)	0.04	35 (10.4)	37 (10.7)	-0.01	35 (10.4)	30 (8.9)	0.05
≥70	1 (0.3)	2 (0.2)	0.01	2 (0.2)	4 (0.3)	-0.03	1 (0.3)	2 (0.5)	-0.04	1 (0.3)	2 (0.6)	-0.04
<b>Sex, n (%)</b>												
Male	330 (97.9)	872 (98.6)	-0.06	1168 (98.6)	1214 (98.5)	0.01	330 (97.9)	342 (98.2)	-0.02	329 (97.9)	330 (98.2)	-0.02
Female	7 (2.1)	12 (1.4)		16 (1.4)	18 (1.5)		7 (2.1)	6 (1.8)		7 (2.1)	6 (1.8)	
<b>eGFR, mL/min/1.73m<sup>2</sup>*</b>												
Mean±SD	72.93 ± 17.21	71.53 ± 15.11	0.09	71.67 ± 16.85	72.36 ± 16.22	-0.04	72.93 ± 17.21	74.45 ± 18.61	-0.08	72.69 ± 16.62	72.52 ± 15.90	0.01
n (%)												
≥90	40 (11.9)	93 (10.5)	0.04	117 (9.8)	150 (12.2)	-0.07	40 (11.9)	57 (16.4)	-0.13	39 (11.6)	46 (13.7)	-0.06
≥60, <90	243 (72.1)	603 (68.2)	0.09	822 (69.4)	841 (68.3)	0.03	243 (72.1)	238 (68.5)	0.08	243 (72.3)	237 (70.5)	0.04
≥30, <60	46 (13.6)	183 (20.7)	-0.19	217 (18.4)	233 (18.9)	-0.01	46 (13.6)	50 (14.3)	-0.02	46 (13.7)	50 (14.9)	-0.03
≥15, <30	3 (0.9)	4 (0.5)	0.05	7 (0.6)	7 (0.5)	0.00	3 (0.9)	3 (0.8)	0.01	3 (0.9)	2 (0.6)	0.03
<15	5 (1.5)	1 (0.1)	0.15	21 (1.8)	1 (0.1)	0.17	5 (1.5)	0	0.16	5 (1.5)	1 (0.3)	0.13
<b>Comorbidities of interest, n (%)</b>												
>60	283 (84.0)	696 (78.7)	0.13	939 (79.3)	992 (80.5)	-0.03	283 (84.0)	296 (84.9)	-0.02	282 (83.9)	283 (84.2)	-0.01
<60	54 (16.0)	188 (21.3)		245 (20.7)	241 (19.5)		54 (16.0)	53 (15.1)		54 (16.1)	53 (15.8)	
<b>sUA, mg/dL</b>												
Mean±SD	5.30 ± 0.65	7.48 ± 0.99	-2.60	5.26 ± 0.72	7.44 ± 0.98	-2.54	5.30 ± 0.65	7.33 ± 0.94	-2.52	5.30 ± 0.65	7.30 ± 0.90	-2.56
<b>Comorbidities of interest, n (%)</b>												
Hypertension	173 (51.3)	339 (38.3)	0.26	533 (45.0)	524 (42.5)	0.05	173 (51.3)	185 (53.2)	-0.04	172 (51.2)	163 (48.5)	0.05
Type 2 diabetes	62 (18.4)	134 (15.2)	0.09	205 (17.3)	207 (16.8)	0.01	62 (18.4)	73 (20.8)	-0.06	62 (18.5)	66 (19.6)	-0.03
Ischemic heart disease	19 (5.6)	37 (4.2)	0.07	62 (5.2)	57 (4.6)	0.03	19 (5.6)	20 (5.7)	0.00	19 (5.7)	22 (6.5)	-0.04
Heart failure	16 (4.7)	36 (4.1)	0.03	64 (5.4)	53 (4.3)	0.05	16 (4.7)	17 (4.9)	-0.01	16 (4.8)	19 (5.7)	-0.04
Cerebrovascular disease	20 (5.9)	35 (4.0)	0.09	55 (4.6)	55 (4.5)	0.01	20 (5.9)	20 (5.8)	0.01	19 (5.7)	14 (4.2)	0.07
Hyperlipidaemia	196 (58.2)	458 (51.8)	0.13	651 (55.0)	664 (53.9)	0.02	196 (58.2)	206 (59.1)	-0.02	195 (58.0)	191 (56.8)	0.02
<b>Number of comorbidities, n (%)</b>												
0	61 (18.1)	228 (25.8)	-0.19	257 (21.7)	286 (23.2)	-0.04	61 (18.1)	58 (16.6)	0.04	61 (18.2)	61 (18.2)	0.00
1	116 (34.4)	306 (34.6)	0.00	410 (34.7)	423 (34.3)	0.01	116 (34.4)	117 (33.5)	0.02	116 (34.5)	120 (35.7)	-0.02
2	84 (24.9)	205 (23.2)	0.04	263 (22.2)	300 (24.3)	-0.05	84 (24.9)	95 (27.2)	-0.05	84 (25.0)	92 (27.4)	-0.05
3	52 (15.4)	94 (10.6)	0.14	164 (13.9)	151 (12.2)	0.05	52 (15.4)	57 (16.3)	-0.02	51 (15.2)	38 (11.3)	0.11
4	20 (5.9)	32 (3.6)	0.11	60 (5.1)	47 (3.9)	0.06	20 (5.9)	15 (4.4)	0.07	20 (6.0)	16 (4.8)	0.05
5	4 (1.2)	14 (1.6)	-0.03	29 (2.5)	20 (1.6)	0.06	4 (1.2)	6 (1.7)	-0.05	4 (1.2)	8 (2.4)	-0.09
6	0	4 (0.5)	-0.10	0	5 (0.4)	-0.09	0	1 (0.2)	-0.06	0	1 (0.3)	-0.08
7	0	1 (0.1)	-0.05	0	1 (0.1)	-0.04	0	0	-0.03	0	0	-
<b>Concomitant medications, n (%)</b>												
Antihyperlipidaemic drug	156 (46.3)	281 (31.8)	0.30	450 (38.0)	450 (36.5)	0.03	156 (46.3)	169 (48.6)	-0.05	155 (46.1)	160 (47.6)	-0.03
ACE inhibitor	9 (2.7)	19 (2.1)	0.03	30 (2.6)	28 (2.3)	0.02	9 (2.7)	9 (2.5)	0.01	9 (2.7)	12 (3.6)	-0.05
ARB	115 (34.1)	222 (25.1)	0.20	336 (28.4)	338 (27.4)	0.02	115 (34.1)	116 (33.3)	0.02	114 (33.9)	114 (33.9)	0.00
Diuretic drug	18 (5.3)	53 (6.0)	-0.03	71 (6.0)	72 (5.8)	0.01	18 (5.3)	19 (5.4)	0.00	18 (5.4)	22 (6.5)	-0.05
Antidiabetic drug	24 (7.1)	47 (5.3)	0.07	75 (6.3)	81 (6.6)	-0.01	24 (7.1)	34 (9.7)	-0.09	24 (7.1)	26 (7.7)	-0.02

\*eGFR (male) =  $194 \times \text{sCr}^{-1.094} \times \text{age}^{-0.287}$ , eGFR (female) =  $194 \times \text{sCr}^{-1.094} \times \text{age}^{-0.287} \times 0.739$ . Data at the index date were used if data at the follow-up date were missing.

ACE, angiotensin-converting enzyme; ARB, angiotensin II receptor blocker; ATE, average treatment effect; ATT, average treatment effect for treated; eGFR, estimated glomerular filtration rate; IPW, inverse probability weighting; PS, propensity score; SD, standard deviation; sUA, serum uric acid levels; ULT, urate-lowering therapy.

**Table S6** Hazard ratio for sUA  $\leq 6.0$ mg/dL compared to  $>6.0$  mg/dL in subjects with asymptomatic hyperuricaemia (Cox proportional hazards model)

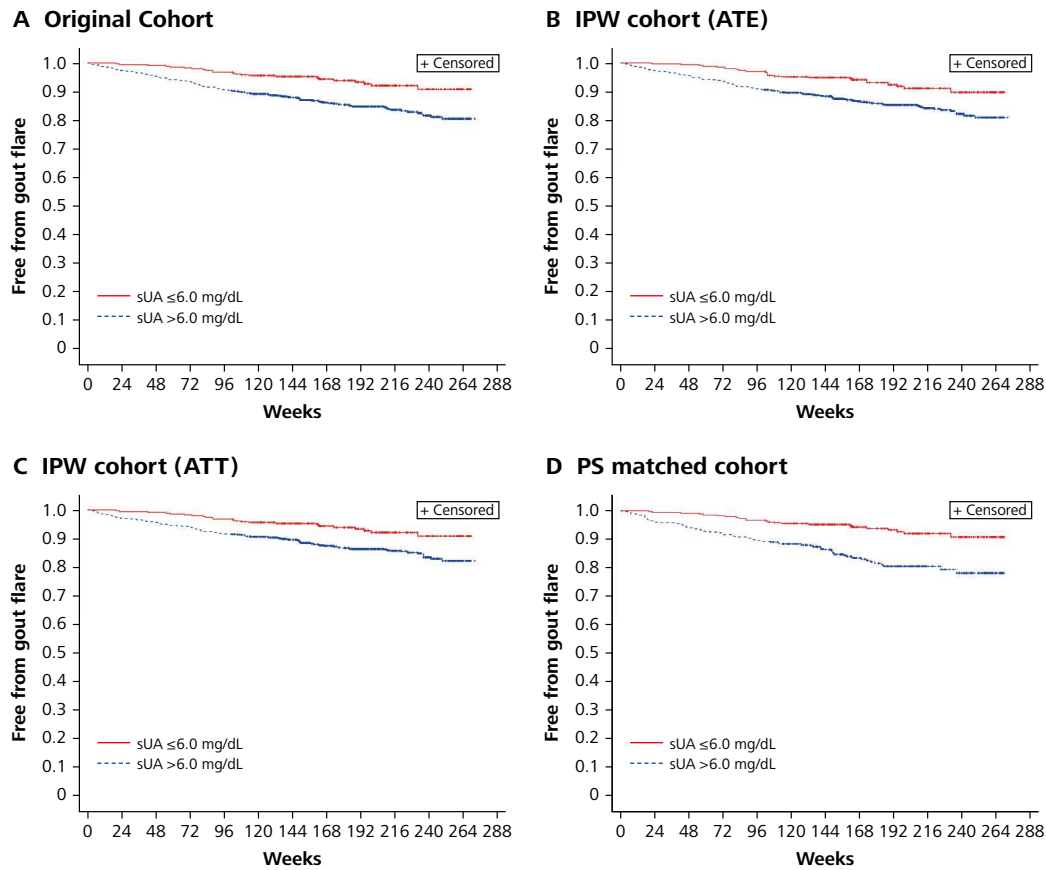
Analysis	Analysis set	HR (95% CI)	P value
Weighted*	IPW cohort (ATE)	0.48 (0.30, 0.79)	0.004
Weighted*	IPW cohort (ATT)	0.48 (0.30, 0.75)	0.002
Unadjusted	PS matched cohort	0.36 (0.22, 0.58)	<0.001
Unadjusted	Original cohort	0.43 (0.27, 0.66)	<0.001
Multivariable adjusted <sup>†</sup>	Original cohort	0.44 (0.28, 0.69)	<0.001

\* Using Robust variance.

<sup>†</sup> Sex, number of comorbidities of interest in period 1, and age, eGFR, and sUA ( $\leq 6.0$ mg/dL/ $>6.0$ mg/dL) at the follow-up date were included in the model.

ATE, average treatment effect; ATT, average treatment effect for the treated; CI, confidence interval; eGFR, estimated glomerular filtration rate; HR, hazard ratio; IPW, inverse probability weighting; PS, propensity score; sUA, serum uric acid levels.

## Supplemental Figure



**Figure S1** Kaplan-Meier curves for time to first gout flare in period 2 (subjects with asymptomatic hyperuricaemia who were prescribed ULT)

ATE, average treatment effect; ATT, average treatment effect for treated; IPW, inverse probability weighting; PS, propensity score; sUA, serum uric acid levels; ULT, urate-lowering therapy.