

THU0539

# IMPACT OF BODY MASS INDEX ON THE AGREEMENT BETWEEN ULTRASOUND- AND CLINICAL ASSESSMENTS OF DISEASE ACTIVITY IN RHEUMATOID ARTHRITIS: MULTICENTRE AND CROSS-SECTIONAL STUDY

G. Mouterde<sup>1</sup>, F. Manna<sup>2</sup>, B. Le Goff<sup>3</sup>, J. D. Albert<sup>4</sup>, S. Jousse-Joulin<sup>5</sup>, F. Gandjbakhch<sup>6</sup>, D. Loeuille<sup>7</sup>, P. Gaudin<sup>8</sup>, M. Piperno<sup>9</sup>, B. Frédéric<sup>10</sup>, B. Jamard<sup>11</sup>, C. Salliot<sup>12</sup>, N. Molinari<sup>2</sup>, B. Combe<sup>1</sup>, M. A. D'agostino<sup>13</sup>, C. Lukas<sup>1</sup>.

<sup>1</sup>CHU Montpellier, Rheumatology, Montpellier, France; <sup>2</sup>CHU Montpellier, Clinical Research and Epidemiology Unit, Montpellier, France; <sup>3</sup>CHU de Nantes, Rheumatology, Nantes, France; <sup>4</sup>CHU Hôpital Sud, Rheumatology, Rennes, France; <sup>5</sup>CHU Cavale Blanche, Rheumatology, Brest, France; <sup>6</sup>Pitié Salpêtrière Hospital, APHP, Rheumatology, Paris, France; <sup>7</sup>CHU Nancy, Rheumatology, Vandoeuvre-les-Nancy, France; <sup>8</sup>CHU Grenoble Alpes Hôpital Sud, Rheumatology, Echirolles, France; <sup>9</sup>Lyon Sud Hospital, HCL, Rheumatology, Pierre Bénite, France; <sup>10</sup>Hôpital d'instruction des armées Bégin, Rheumatology, Saint-Mandé, France; <sup>11</sup>CHU Purpan, Rheumatology, Toulouse, France; <sup>12</sup>CHR Orleans, Rheumatology, Orleans, France; <sup>13</sup>Ambroise Paré Hospital, APHP, Rheumatology, Boulogne-Billancourt, France

**Background:** Clinical assessment of swollen joint count (SJC) in rheumatoid arthritis (RA) might be affected by obesity in terms of obesity-related excess adipose tissue.

**Objectives:** To compare the level of agreement between synovitis evaluated by Power Doppler ultrasound (PDUS) and clinical examination (SJC as component of SDAI) in obese (O) (i.e. Body Mass Index (BMI) >30) versus non-obese (NO) (BMI≤30) RA patients.

**Methods:** RA patients ≥18 years fulfilling 2010 ACR-EULAR criteria were included in the cross-sectional multicentre (13 centres) French observational RABODI study (ClinicalTrials.gov Identifier: NCT03004651). Clinical synovitis was evaluated on 44 joints. ESR and CRP were collected and SDAI, DAS28, DAS were calculated. A standard US examination on 44 joints was performed by an independent investigator blinded to clinical data. US synovitis was defined by a synovial hypertrophy ≥1 and PD signal≥1 on a semi-quantitative scale according to the EULAR-OMERACT scoring system. Levels of agreement between number of synovitis defined by PDUS and clinical examination were compared in O versus NO patients using Chi2 test, and Kappas (k) and ORs were calculated. A patient was considered "discordant" if ≥1 joint was discordantly classified by PDUS and clinical examination. SDAI was calculated and compared, with SJC defined either by clinical examination or PDUS.

**Results:** 121 patients were included: mean (SD) age of 58.5 (12.7) years, mean disease duration of 11.1 (9.7) years. 81% were female, 84.3% anti-CCP positive, 63.6% had erosive disease. Mean SDAI was 12.6 (±10.2). 53 (43.8%) had a BMI >30 and 68 (56.2%) ≤30. 59 (48.7%) and 62 (51.2%) had a SDAI≤11 and >11, respectively. The 2 groups were comparable, except for weight (mean (SD) 65.4 (13.5) vs 96.7 (14.7) kg, p< 0.001), some comorbidities (diabetes, asthma and fibromyalgia more frequent in O patients), tender joint count (mean 4.04 (±5.23) in NO vs 7.38 (±8.64) in O, p=0.021). Mean number of SJC was 2.4 (3.3), and PDUS 6.7 (±6.3). Levels of agreement between clinical and PDUS findings were comparable in O vs. NO patients regarding SDAI and other scores (Table). Patients with ≥3 discordant joints were numerically higher in O patients compared to NO (26/53 (49.1%) vs 22/68 (32.4%), p=0.062). At the joint level, discordance was higher in O patients in MCP4 (p=0.057), wrist (p=0.089).

**Table. Level of agreement between PDUS synovitis and SJC in obese versus normally weighted RA patients**

Score with PDUS vs. SJC		BMI ≤ 30 N=68	BMI > 30 N=53	OR (95%CI)	P*
SDAI	Non-Discordant (ND)	63	46	1.92 (0.57-6.42)	0.28
	Discordant (D)	5	7		
DAS28	Kappa	0.85	0.73	1.32 (0.4-4.35)	0.64
	ND	62	47		
DAS44	Kappa	0.81	0.77	0.24 (0.03-2.14)	0.23
	ND	63	52		
≥1 synovitis	Kappa	0.83	0.96	1.54 (0.7-3.4)	0.28
	ND	51	35		
	D	17	18		
	Kappa	0.50	0.32		

**Conclusion:** In RA patients, despite a perceived higher difficulty to clinically detect SJ in O patients, the discrepancy between clinically- and PDUS defined synovitis was not significantly higher than in NO patients, and did not impact the extend of the definition of disease activity level.

**Disclosure of Interests:** Gael Mouterde: None declared, Federico Manna: None declared, Benoit Le Goff: None declared, Jean-David Albert: None declared, Sandrine Jousse-Joulin: None declared, Frederique Gandjbakhch: None declared, Damien LOEUILLÉ: None declared, Philippe Gaudin Speakers bureau: Lilly, Muriel PIPERNO: None declared, BANAL Frédéric: None declared, Bénédicte Jamard: None declared, Carine Salliot: None declared, Nicolas Molinari: None declared, Bernard Combe Grant/research support from: Novartis, Pfizer, Roche-Chugai, Consultant of: AbbVie; Gilead Sciences, Inc.; Janssen; Eli Lilly and Company; Pfizer; Roche-Chugai; Sanofi, Speakers bureau: Bristol-Myers Squibb; Gilead Sciences, Inc.; Eli Lilly and Company; Merck Sharp & Dohme; Pfizer; Roche-Chugai; UCB, Maria-Antonietta D'Agostino: None declared, Cédric Lukas: None declared

DOI: 10.1136/annrheumdis-2020-eular.3385

THU0540

# A PHASE 2B STUDY OF INTRAVENOUSLY (IV) ADMINISTERED Tc 99m TILMANOCEPT TO DETERMINE DIFFERENTIAL UPTAKE, REPRODUCIBILITY OVER TIME AND IMAGE STABILITY IN HEALTHY SUBJECTS AND IN PATIENTS WITH RHEUMATOID ARTHRITIS (RA) ON STABLE TREATMENT

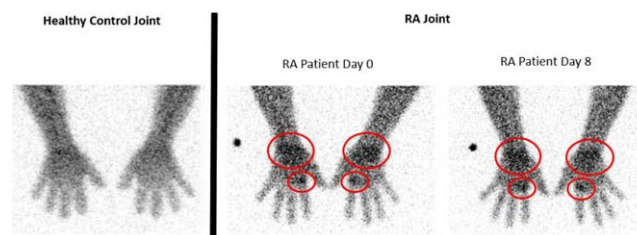
A. Hussein<sup>1</sup>, D. Ralph<sup>1</sup>, B. Potter<sup>1</sup>, B. Abbruzzese<sup>1</sup>, R. Hershey<sup>1</sup>, K. Repp<sup>1</sup>, H. Shakhtra<sup>1</sup>, M. Goel<sup>1</sup>, M. Palmer<sup>1</sup>, A. Kissling<sup>1</sup>, C. Hartings<sup>1</sup>, M. Blue<sup>1</sup>, M. Rosol<sup>1</sup>. <sup>1</sup>Navidea Biopharmaceuticals, Dublin, United States of America

**Background:** At present, there are no reliable noninvasive means to directly monitor disease activity in RA patients. Activated macrophages are a critical component of the inflammatory etiology of RA due to their role in prolonged RA joint inflammation and destruction through the release of pro-inflammatory cytokines and chemokines. Tc 99m tilmanocept is a radiopharmaceutical imaging agent that binds with high affinity to the macrophage mannose receptor CD206 that resides on activated macrophages. Previous clinical trials demonstrated safety and tolerability of Tc 99m tilmanocept, as well as a determination of optimal clinical dose and timeframe for RA imaging.

**Objectives:** The current phase 2b study aims to evaluate reproducibility and stability of imaging and will assess quantitative Tc 99m tilmanocept uptake cut points that reliably enable discrimination between joints of healthy people and RA patients.

**Methods:** The analysis cohort contained 18 healthy controls (HC) clinically free of inflammatory joint disease and 12 subjects with clinically diagnosed RA who are on stable anti-inflammatory and/or anti-rheumatic therapy. Each subject received a 150-mcg dose of tilmanocept radiolabeled with 10 mCi of Tc 99m in a 3mL IV injection. Injection was followed by planar imaging at 60 and 180 minutes for both HC and RA subjects on study Day 0 and repeated in RA subjects on Day 8. Images were quantitatively assessed to detect localization within synovial spaces of bilateral hands and wrists by determining average pixel intensity in each region of interest relative to average pixel intensity in a joint-specific reference region.

**Results:** Data obtained from the interim analysis support the hypothesis that Tc 99m tilmanocept imaging can provide robust quantitative imaging in HC and RA subjects. Repeat images within and between days demonstrate root mean squared differences that are approximately 10% or less of the observed localization of Tc 99m tilmanocept. Qualitatively, images of HC indicated no disease-related site-specific localization, whereas localization is present in RA subjects at levels expected given the difference in macrophage number and density in different pathotypes of RA. Notably, images from patients with active RA exhibit the same localization patterns on images taken in a test-retest fashion on the same day as well as in subjects with images acquired on Day 0 and Day 8 (see Figure 1). These results show low imaging readout variability, enabling reliable quantification of joints with RA-involved macrophage-mediated inflammation. Analysis of the HC and RA images was used to determine initial quantitative "cut-points" to differentiate between joints with and without the inflammation typically seen in RA.



**Figure 1.** Tilmanocept consistently localizes in areas of macrophage-driven inflammation, demonstrating low variability. RA patients exhibit reproducible localization over a 1-week period. Typical of healthy subjects, no evidence of inflammation-related Tc 99m tilmanocept uptake was observed in the healthy control. Images on the right show same patient imaged on 2 different days.