

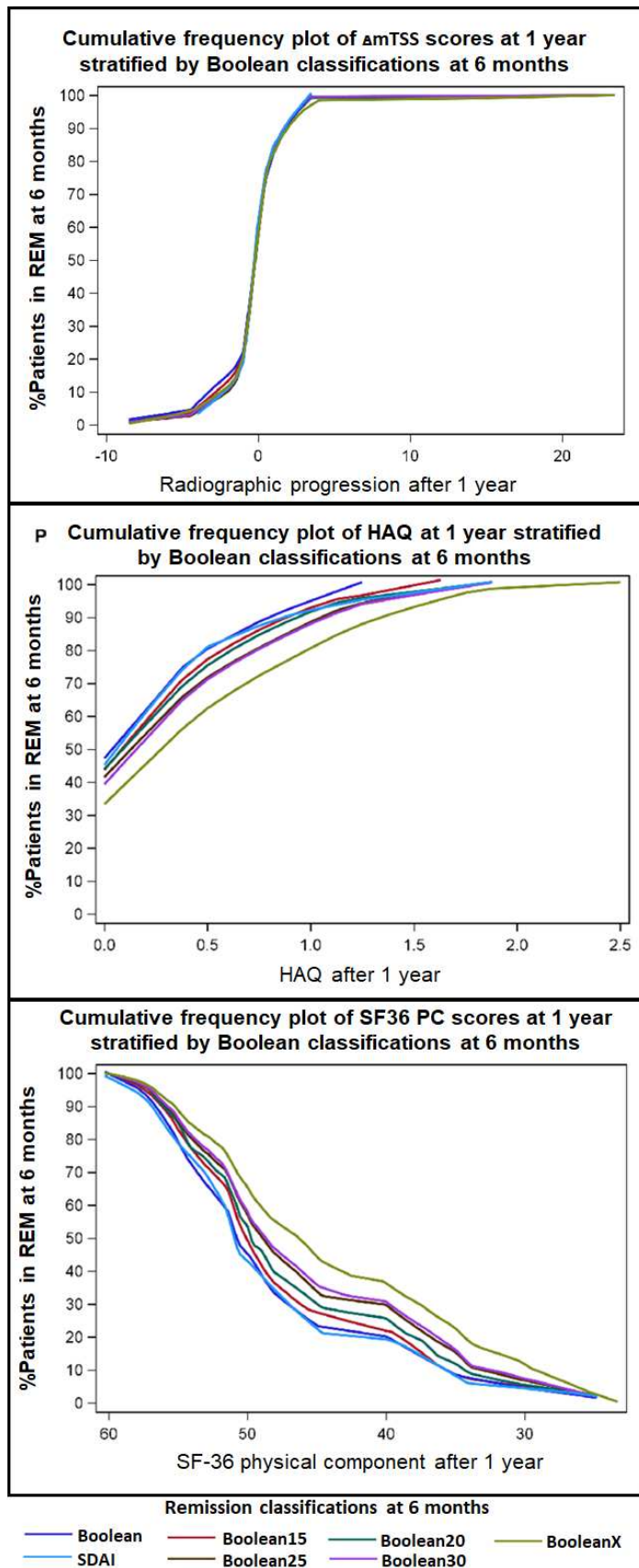
Supplementary material:**Remission rates at 6 month**

	Boolean	Boolean1.5	Boolean2.0	Boolean2.5	Boolean3.0	BooleanX
ASPIRE	13.12	14.66	15.74	16.98	17.59	20.22
BEFORE	10.38	12.57	13.37	15.17	15.97	19.36
PREMIER	13.37	14.50	15.63	16.20	16.38	19.40
ATTRACT	2.43	4.86	4.86	4.86	5.67	6.88
FORWARD	7.00	8.12	9.52	10.64	11.20	14.57
DE019	7.28	8.54	11.71	12.66	12.66	13.92

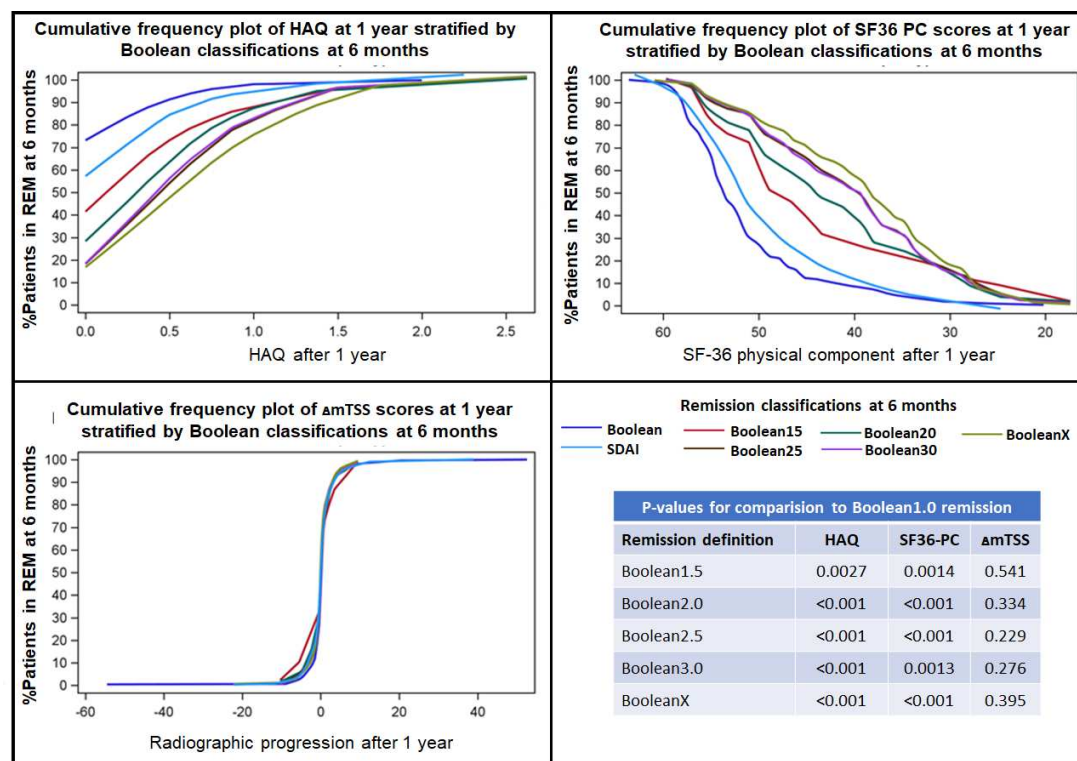
Remission rates at 12 month

	Boolean	Boolean1.5	Boolean2.0	Boolean2.5	Boolean3.0	BooleanX
ASPIRE	21.14	23.46	25.31	27.16	27.78	33.02
BEFORE	18.16	20.76	22.75	24.95	25.55	28.34
PREMIER	20.15	22.79	23.92	24.67	25.80	28.25
ATTRACT	7.29	9.31	10.12	10.93	12.55	14.98
FORWARD	17.09	19.89	21.85	24.09	25.49	32.49
DE019	8.23	9.81	11.39	12.03	13.29	17.09

Supplementary table 1: Modified Boolean remission (using a PGA cut-off of 1.5, 2.0, 2.5, 3.0cm and omitting the PGA completely (BooleanX)) rates in percent depicted by every trial at 6 months and 12 months



Supp-Figure 1: Cumulative frequency distribution of xray change (Δ mTSS), HAQ and SF-36 physical component scores in established RA patients, separately by categorisation in modified Boolean remission definitions and SDAI remission (overlapping groups).



Supp-Figure 2: Cumulative frequency distribution of HAQ and SF-36 physical component scores (upper panel) and xray changes (Δ mTSS) (lower panel) in early RA patients, separately by categorisation in modified Boolean remission criteria (non-overlapping groups) and SDAI remission. P-values are provided the table for chi-square tests between the respective remission category versus standard Boolean definition.