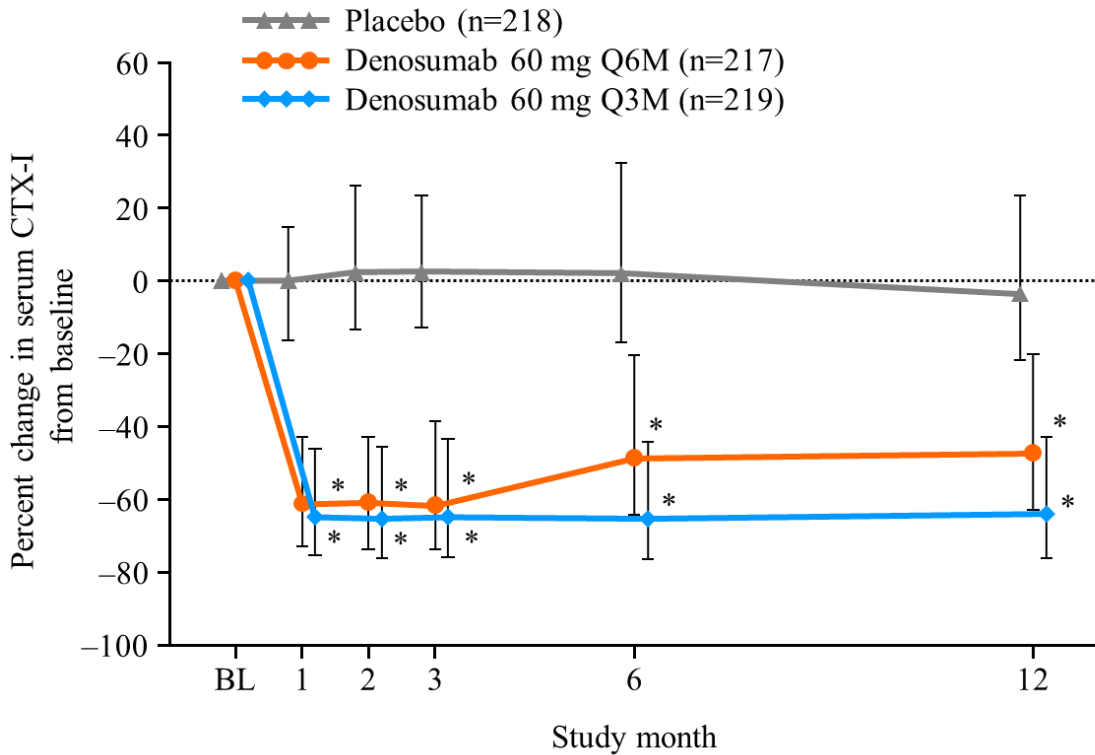


Supplementary File 1: Percent changes from the baseline in bone metabolic markers

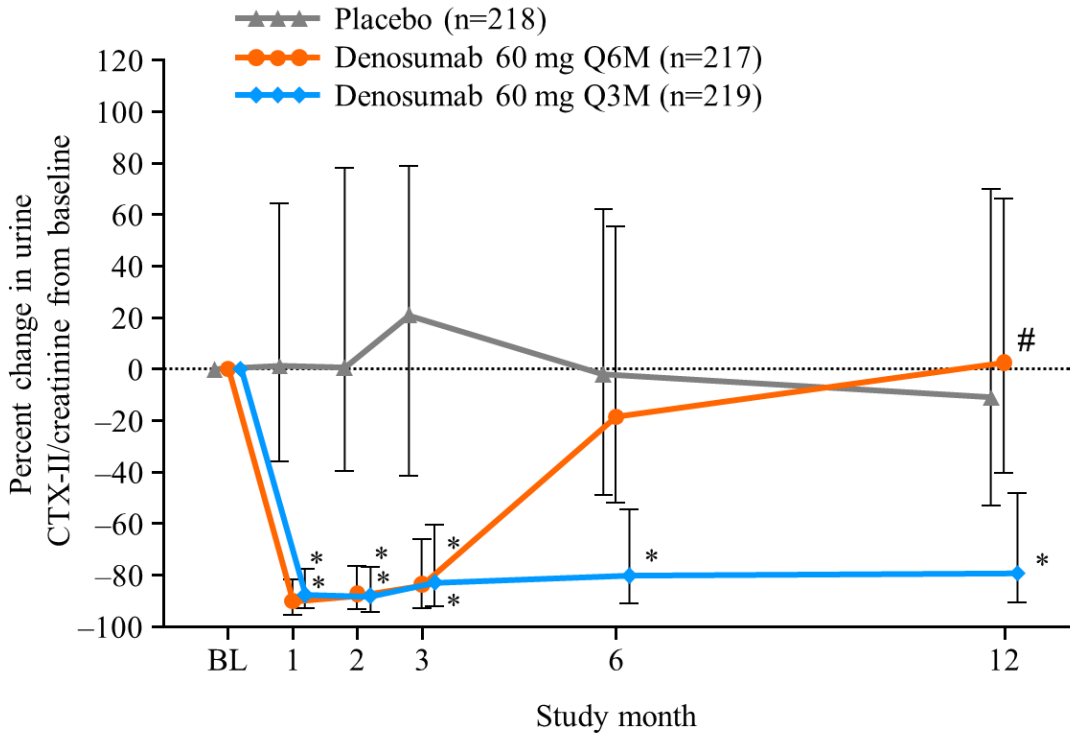
(A) Serum CTX-I, (B) Urine CTX-II/creatinine, and (C) serum COMP from baseline. BL=baseline. CTX-I=C-telopeptide of type I collagen. CTX-II=C-telopeptide of type II collagen. COMP=cartilage oligomeric matrix protein. Q3M=every 3 months. Q6M=every 6 months.

Data are for full analysis set (observed data). Median and interquartile ranges are presented. Numbers of subjects at indicated time (BL, 1, 2, 3, 6, and 12 months) are as follows: Placebo were 218, 218, 218, 216, and 210 (211†); Q6M were 214 (215†), 214, 213 (214†), 205 (209†), and 199 (200†); and Q3M were 218 (217†), 218 (217 †), 218 (216†), 216 (215†), and 204 (203†), respectively (†=number of urine CTX-II/creatinine). P values were calculated based on two-sided van Elteren stratified rank test adjusting for baseline use of glucocorticoid. *p<0.0001. #p=0.0123.

A



B



C

