

Supplementary files: Incidence and time trends in joint surgery among patients with psoriatic arthritis: A register-based time series study from Denmark

Table S1. Joint-related surgery including total joint replacements and soft tissue procedures of the upper and lower limbs and related NOMESCO-10 code.

Surgical category and specific procedure:	ICD-10 code
Ankle and foot	
Arthroplasty: Primary prosthetic replacement of joint of ankle and foot	KNHB
Soft tissue: Operations on capsules and ligaments of joints of ankle and foot	KNHE
Synovium: Operations on synovia and joint surfaces of ankle and foot	KNHF
Arthrodesis: Excision, reconstruction and fusion of joints of ankle and foot	KNHG
Soft tissue: Miscellaneous operations on joints of ankle and foot	KNHH
Soft tissue: Operations on muscles and tendons of ankle and foot	KNHL
Soft tissue: Operations on fascia, ganglia, synovial sheaths and bursae of ankle and foot	KNHM
Knee	
Arthroplasty: Primary prosthetic replacement of knee joint	KNGB
Soft tissue: Operations on capsules and ligaments of knee joint	KNGE
Synovium: Operations on synovia and joint surfaces of knee	KNGF
Arthrodesis: Excision, reconstruction and fusion of knee joint	KNGG
Soft tissue: Operations on fascia, ganglia, and bursae of knee and lower leg	KNGM
Procedure: Hip	
Arthroplasty: Primary prosthetic replacement of hip joint	KNFB
Soft tissue: Operations on capsules and ligaments of hip joint	KNFE
Synovium: Operations on synovia and surfaces of hip joint	KNFF
Arthrodesis: Excision, reconstruction and fusion of hip joint	KNFG
Soft tissue: Operations on fascia, ganglia and bursae of hip and thigh	KNFM
Hand and wrist	
Arthroplasty: Primary prosthetic replacement of joint of wrist and hand	KNDB
Soft tissue: Operations on capsules and ligaments of joints of wrist and hand	KNDE
Synovium: Operations on synovia and joint surfaces of wrist and hand	KNDF
Arthrodesis: Excision, reconstruction and fusion of joint of wrist and hand	KNDG
Soft tissue: Operations on muscles and tendons of wrist and hand	KNDL
Soft tissue: Operations on fascia, ganglia, synovial sheaths and bursae of wrist and hand	KNDM
Soft tissue: Miscellaneous operations on wrist and hand	KNDT
Elbow	
Arthroplasty: Primary prosthetic replacement of elbow joint	KNCB
Soft tissue: Operations on capsules and ligaments of elbow joint	KNCE
Synovium: Operations on synovia and surfaces of elbow joint	KNCF
Arthrodesis: Excision, reconstruction and fusion of elbow joint	KNCG
Soft tissue: Operations on muscles and tendons of elbow and forearm	KNCL

Soft tissue: Miscellaneous operations on elbow joint	KNCH
Soft tissue: Operations on fascia, ganglia, synovial sheaths and bursae of elbow and forearm	KNCM
Shoulder	
Arthroplasty: Primary prosthetic replacement of joints of shoulder	KNBB
Soft tissue: Operations on capsules and ligaments of joints of shoulder	KNBE
Synovium: Operations on synovia and surfaces of joint of shoulder	KNBF
Arthrodesis: Excision, reconstruction and fusion of joints of shoulder	KNBG
Soft tissue: Operations on muscles and tendons of shoulder and upper arm	KNBL
Soft tissue: Miscellaneous operations on shoulder or upper arm	KNBH
Soft tissue: Operations on fascia, ganglia and bursae of shoulder and upper arm	KNBM
Surgeries classified as arthroplasty and arthrodesis were categorised as joint sacrificing surgery whereas non-joint sacrificing surgery was defined as soft tissue, synovial surgery or joint surfaces, mainly synovectomies.	

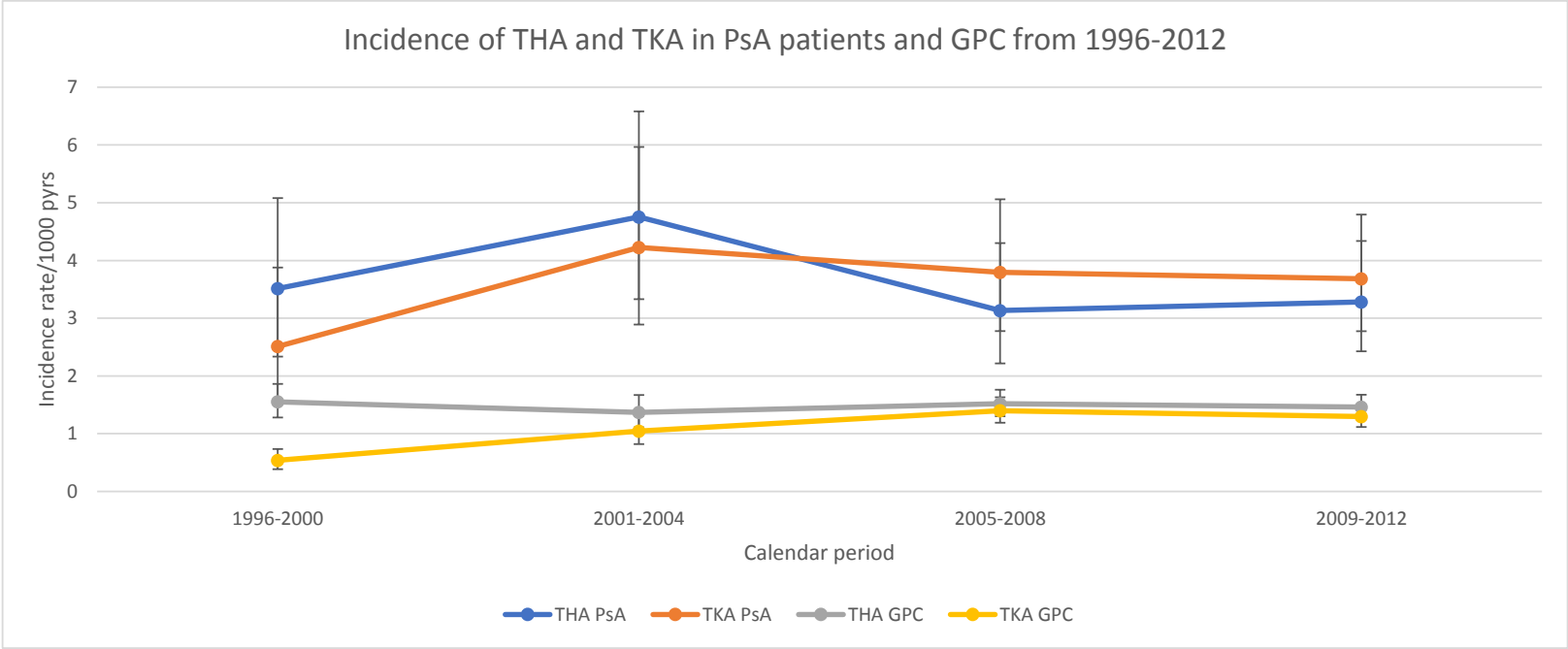


Figure S1: Five-year incidence rates (per 1000 pyrs) of THA and TKA among newly diagnosed PsA patients and GPC from 1996-2012.

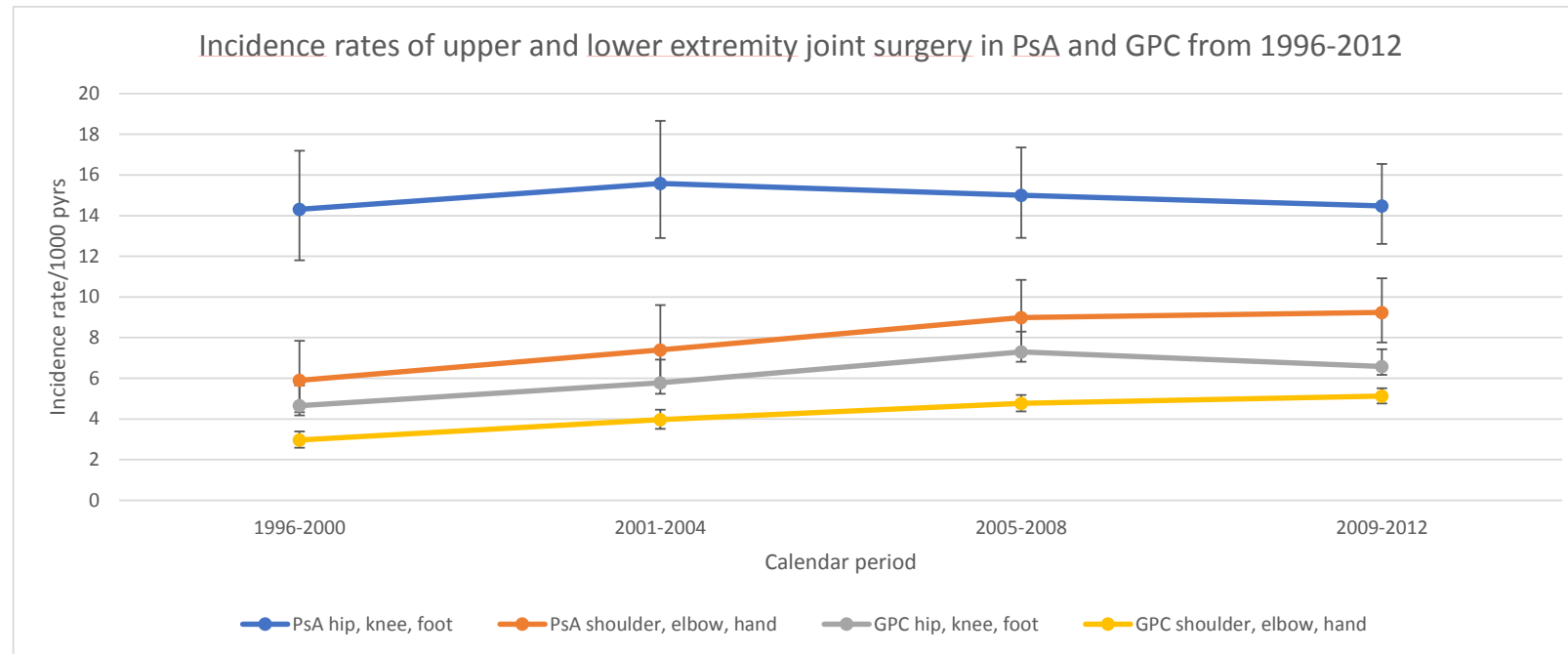


Figure S2: Five-year incidence rates (per 1000 pyrs) of surgery of the upper- or lower extremity among newly diagnosed PsA patients and GPC from 1996-2012.

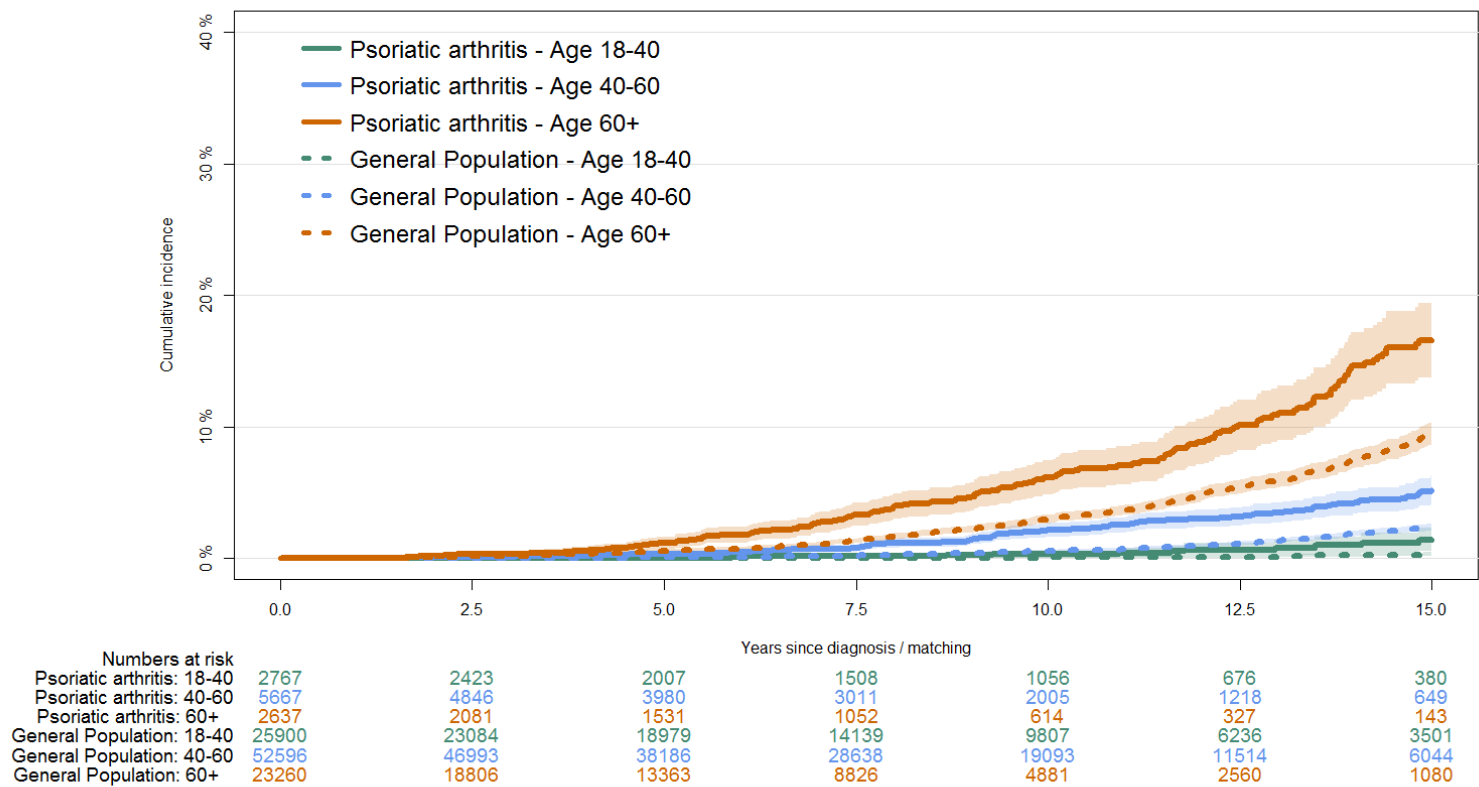


Figure S3: The cumulative incidence of THA stratified according to the time of PsA diagnosis compared with GPC matched at the same time of diagnosis

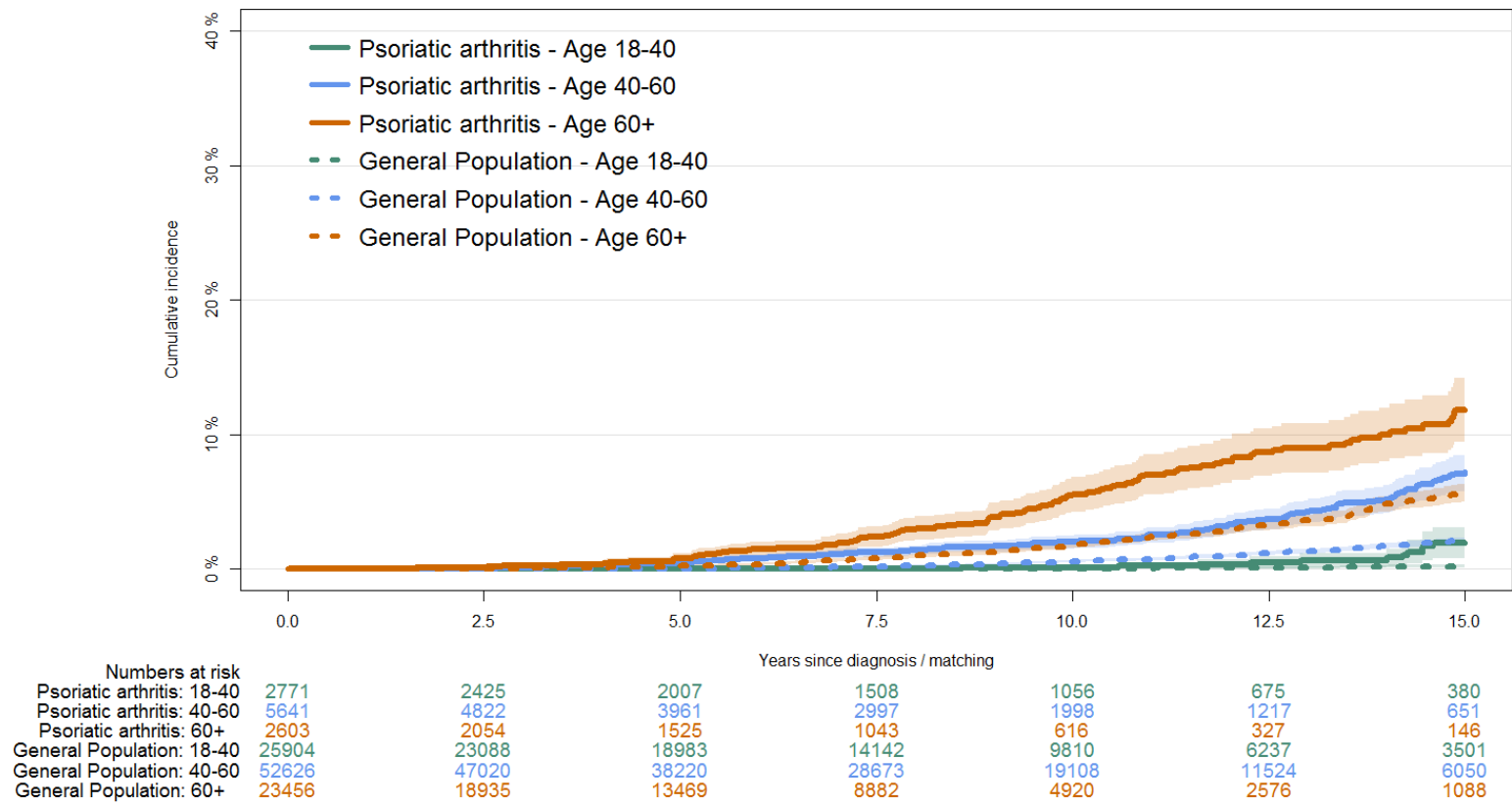


Figure S4: The cumulative incidence of TKA stratified according to the time of PsA diagnosis compared with GPC matched at the same time of diagnosis.