

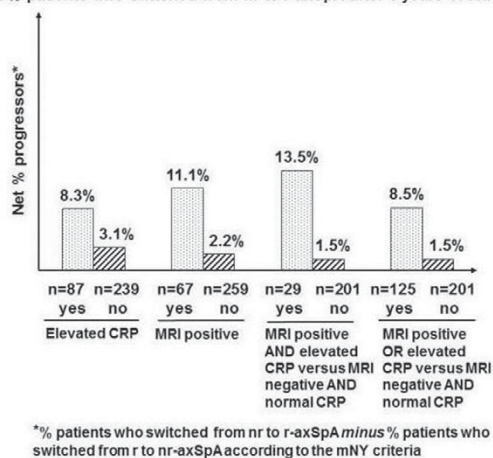
treatment. **Statistical analysis:** The radiographic progression has been evaluated in both the completers and after Linear Extrapolation (LE) and Last Observation Carried Forward (LOCF) technique in case of missing data. The predictive factors of radiographic progression were evaluated on the completer population using multilevel binomial GEE analysis incorporating measurements from all readers at 5-years and taking into account the within-reader correlation. Moreover, the progression rate was assessed in subgroups of patients according to CRP status and MRI-SIJ status at baseline.

**Results:** At baseline, 62 out of the 416 patients (14.9%) were considered r-axSpA. Out of these 416 patients, 24 (5.8%) changed from mNY negative to mNY positive after 5-years. Conversely, 3 patients changed from mNY positive at baseline to negative at year 5 (e.g. 0.7%) resulting in a net progression of 5.1%. These results were similar when applying LOCF and LE (4.1% and 3.8% net progression).

In the multivariate analysis, presence of BME at MRI-SIJ was highly predictive of radiographic progression (OR=4.85 [95% CI: 2.95–7.97]) together with a younger age (OR=0.97 [95% CI: 0.94–0.99]) and longer symptom duration (OR=1.40 [95% CI: 1.04–1.89]).

Of the 383 patients with complete data, the net % patients who switched from nr-axSpA to r-axSpA after 5 years ranged from 2.0% to 13.5% according to the presence of objective signs of inflammation at baseline (see figure).

Fig: Net % patients who switched from nr to r-axSpA after 5 years of follow-up



**Conclusions:** This is the first cohort in early axSpA with 5-year follow-up demonstrating the importance of presence of objective signs of inflammation as predisposing factors of development of radiographic sacroiliitis.

**Disclosure of Interest:** None declared

**DOI:** 10.1136/annrheumdis-2017-eular.1637

#### OP0117 BONE MARROW OEDEMA IN SACROILIAC JOINTS OF YOUNG ATHLETES SHOWS MOST FREQUENTLY IN THE POSTERIOR INFERIOR ILIUM

U. Weber<sup>1</sup>, A.G. Jurik<sup>2</sup>, A. Zeiden<sup>2</sup>, E. Larsen<sup>3</sup>, S.H. Jørgensen<sup>3</sup>, K. Rufibach<sup>4</sup>, C. Schioldan<sup>3</sup>, S. Schmidt-Olsen<sup>3</sup>. <sup>1</sup>University of Southern Denmark, Odense; <sup>2</sup>Aarhus University, Aarhus; <sup>3</sup>North Denmark Regional Hospital, Hjørring, Denmark; <sup>4</sup>F. Hoffmann-La Roche, Basel, Switzerland

**Background:** Low grade bone marrow oedema (BMO) was reported in the sacroiliac joints (SIJ) of up to 25% of healthy individuals and mechanical back pain patients, challenging the imaging discrimination from early spondyloarthritis (SpA) [1]. Potential explanations range from mechanical stress lesions to vascular signals and anatomical SIJ variants.

**Objectives:** To determine BMO frequency and anatomical distribution in 8 SIJ regions in hobby and professional athletes.

**Methods:** The sample consisted of 2 cohorts of 20 healthy hobby runners (HR) before and after running and 22 professional ice hockey players (IP) from the Danish premier league: HR/IP 40%/100% men; mean age (SD) 27.2 (5.4)/25.9 (4.6) years; mean BMI (SD) 22.6 (1.5)/25.7 (1.6) kg/m<sup>2</sup>. Semicoronal MRI scans of the SIJ with T1SE and STIR sequences were obtained in HR before and 24 hours after a running competition over 6.2 kilometers (mean duration 35.4 minutes, mean speed 10.4 km/h), and in IP during the competitive season. The scans were assessed for BMO independently by 3 blinded readers (AGJ, AZ, UW) according to the quadrant based MORPHO module (www.carearthritis.com). Paired images of HR were read blinded to timepoint. 7 MRI scans (2 paired images) of SpA patients under TNF treatment served to mask readers. A pre-test reader calibration used MRI scans from 11 patients with active sacroiliitis and 9 healthy volunteers. Reader agreement was assessed by ICC (3, 1). Descriptive analysis comprised mean frequency of SIJ quadrants with BMO and distribution of BMO quadrants in 8 anatomical SIJ regions: upper/lower ilium and sacrum, subdivided in anterior and posterior slices, as concordantly recorded by the majority ( $\geq 2/3$ ) of readers.

**Results:** Agreement among 3 readers for SIJ BMO was excellent in calibration (ICC 0.93) and moderate in athletes (ICC 0.59) due to low frequency of BMO. The mean number (SD) of SIJ quadrants showing BMO was 3.1 (4.2)/3.1 (4.5) in HR before/after running, and 3.6 (3.0) in IP. The posterior inferior ilium was the single most affected region, followed by the upper anterior sacrum, consistently across 2 cohorts of athletes.

Table 1. Frequency and anatomical distribution of SIJ quadrants with BMO in 2 cohorts of athletes

Cohort	SIJ quadrants	Upper Ilium		Lower Ilium		Upper Sacrum		Lower Sacrum	
		Anterior	Posterior	Anterior	Posterior	Anterior	Posterior	Anterior	Posterior
HR before	Mean (SD)	0.1 (0.4)	0.1 (0.3)	0.2 (0.7)	1.4 (1.9)	0.5 (0.9)	0.1 (0.4)	0.3 (0.6)	0.5 (1.6)
	$\geq 1$ Q (n)	3	0	1	8	4	2	3	1
	$\geq 2$ Q (n)	0	0	1	6	3	0	0	1
	$\geq 3$ Q (n)	0	0	1	2	1	0	0	1
	$\geq 4$ Q (n)	0	0	0	1	0	0	0	1
HR after	Mean (SD)	0.2 (0.4)	0 (0.1)	0.3 (0.8)	1.2 (1.7)	0.5 (1.0)	0.2 (0.7)	0.3 (0.7)	0.5 (1.6)
	$\geq 1$ Q (n)	2	0	2	9	3	2	3	1
	$\geq 2$ Q (n)	0	0	1	6	2	1	0	1
	$\geq 3$ Q (n)	0	0	1	3	2	0	0	1
	$\geq 4$ Q (n)	0	0	1	1	0	0	0	1
IP	Mean (SD)	0.1 (0.4)	0.1 (0.3)	0.5 (0.8)	1.9 (1.9)	0.6 (1.1)	0.1 (0.4)	0.2 (0.6)	0.1 (0.6)
	$\geq 1$ Q (n)	0	1	7	13	3	0	3	0
	$\geq 2$ Q (n)	0	0	4	11	2	0	1	0
	$\geq 3$ Q (n)	0	0	0	6	2	0	0	0
	$\geq 4$ Q (n)	0	0	0	3	1	0	0	0

Abbreviations. Q: SIJ quadrants with BMO.  $\geq 1/2/3/4$  Q (n): number of subjects (n) with  $\geq 2/3$  readers indicating  $\geq 1/2/3/4$  SIJ quadrants with BMO.

**Conclusions:** In hobby and professional athletes, BMO showed on average in 3–4 SIJ quadrants. The posterior lower ilium was the SIJ region most frequently affected by BMO. These findings in healthy controls may help refine thresholds for a positive SIJ MRI in early SpA.

**References:**

[1] Weber U et al. *Curr Rheumatol Rep* 2016;18:58.

**Disclosure of Interest:** None declared

**DOI:** 10.1136/annrheumdis-2017-eular.4352

#### OP0118 IMPACT OF RADIOGRAPHIC DAMAGE IN THE SACROILIAC JOINTS ON FUNCTION AND SPINAL MOBILITY IN PATIENTS WITH AXIAL SPONDYLOARTRITIS: RESULTS FROM THE GERMAN SPONDYLOARTRITIS INCEPTION COHORT

M. Protopopov<sup>1</sup>, J. Sieper<sup>1</sup>, H. Haibel<sup>1</sup>, J. Listing<sup>2</sup>, M. Rudwaleit<sup>3</sup>, D. Poddubnyy<sup>1</sup>. <sup>1</sup>Department of Gastroenterology, Infectiology and Rheumatology, Charité Universitätsmedizin Berlin; <sup>2</sup>German Rheumatism Research Centre, Berlin; <sup>3</sup>Klinikum Bielefeld Rosenhöhe, Bielefeld, Germany

**Background:** It has been shown in the past that the spinal mobility in patients with axial spondyloarthritis (AxSpA) is associated with spinal structural damage, disease activity parameters and spinal inflammation [1]. The impact of radiographic damage in the sacroiliac joints on functional parameters in patients with axial spondyloarthritis has not been investigated so far.

**Objectives:** To analyze the association between radiographic sacroiliitis and parameters of the functional status and spinal mobility in patients with axSpA.

**Methods:** Altogether 210 patients with definite axSpA (115 with radiographic and 95 with non-radiographic axSpA) from the German Spondyloarthritis Inception Cohort (GESPIC) were included in the current study. Radiographs of sacroiliac joints were obtained at baseline and after 2 years of the follow up and were scored by two trained readers according to the conventional grading system of the modified New York criteria (grade 0 to 4 per joint). A mean of two readers score for each joint and a sum score for both SIJ were calculated for each patient, giving a total sacroiliitis score between 0 and 8. Functional status and spinal mobility were assessed by means of the Bath Ankylosing Spondylitis Functional Index (BASFI) and the Bath Ankylosing Spondylitis Metrology Index (BASMI), respectively. Both baseline and year 2 data were included in the longitudinal mixed models analysis that was corrected for the dependencies between the two time-point values of each individual and adjusted for the structural damage in the spine (modified Stoke Ankylosing Spondylitis Spine Score - mSASSS), disease activity (the Bath Ankylosing Spondylitis Disease Activity Index - BASDAI and level of C-reactive protein - CRP), and sex.

**Results:** In the longitudinal mixed model analysis adjusted for the presence of structural damage in the spine (mSASSS), disease activity (BASDAI and CRP) and sex, radiographic sacroiliitis demonstrated an independent association with the BASFI:  $\beta=0.10$  (95% CI 0.01–0.19) and the BASMI:  $\beta=0.12$  (95% CI 0.03–0.21), respectively – table. These data indicate that change by one radiographic sacroiliitis grade in one sacroiliac joint is associated with a BASFI/BASMI worsening by 0.10/0.12 points independently of structural damage in the spine and disease activity. Assuming linear association, progression of radiographic sacroiliitis from grade 0 bilaterally to grade 4 bilaterally would result in a worsening by 0.8 points in BASFI and 0.96 points in BASMI. Sensitivity analysis performed in radiographic and non-radiographic axSpA subgroups provided similar results for both outcomes.

**Conclusions:** Radiographic damage in the sacroiliac joints might have an impact,