

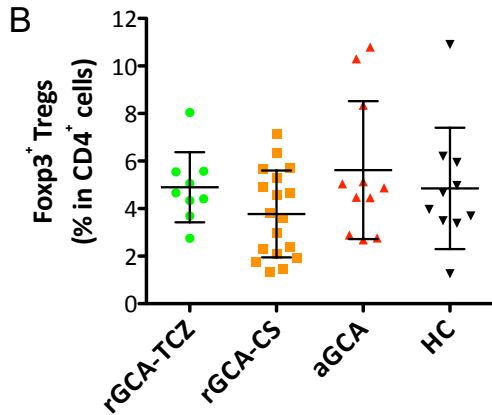
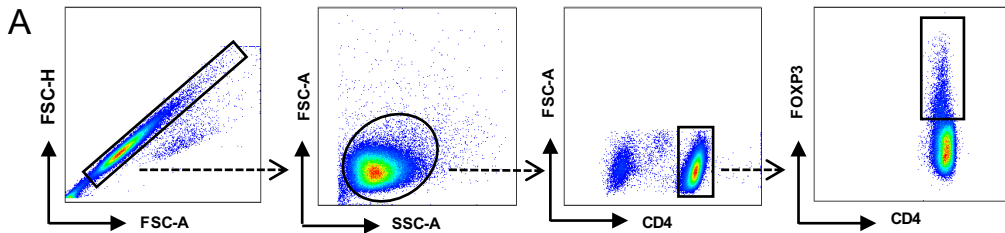
Supplementary Figure 1. Treg frequencies in GCA patients and healthy controls. A, Treg (CD4⁺Foxp3⁺ T-cells) gating strategy. **B,** Frequencies of total Tregs in GCA patients (rGCA-TCZ, n = 9; rGCA-CS, n = 18; aGCA, n = 11) and HC (n = 10). Analysis: ANOVA. Error bars represent means and SD. FSC = forward scatter; SSC = side scatter; H = height; A = area; GCA = giant cell arteritis; CS = corticosteroids (prednisone); TCZ = tocilizumab; rGCA-CS = GCA in remission on CS; rGCA-TCZ = GCA in remission on TCZ without or without CS; aGCA = active GCA; HC = healthy controls.

Supplementary Figure 2. Frequencies of resting Tregs and non-suppressive Foxp3^{low} cells in GCA patients and healthy controls. A, Frequencies of CD45RA⁺Foxp3^{low} resting Tregs (rTregs or subset I) in GCA patients (rGCA-TCZ, n = 9; rGCA-CS, n = 17; aGCA, n = 9) and HC (n = 10). **B,** Frequencies of CD45RA⁻Foxp3^{low} non-suppressive cells (non-suppressive Foxp3^{low} cells or subset III) in GCA patients (rGCA-TCZ, n = 9; rGCA-CS, n = 17; aGCA, n = 7) and HC (n = 10). Analysis: ANOVA. Error bars represent means and SD.

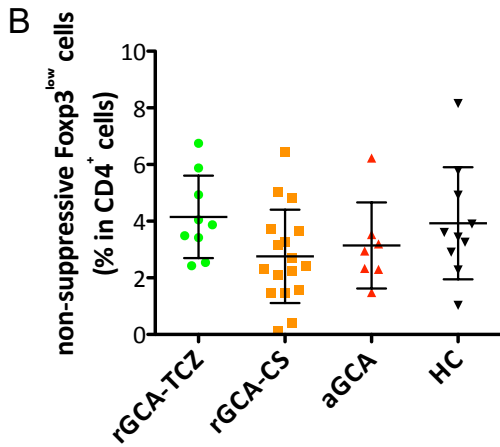
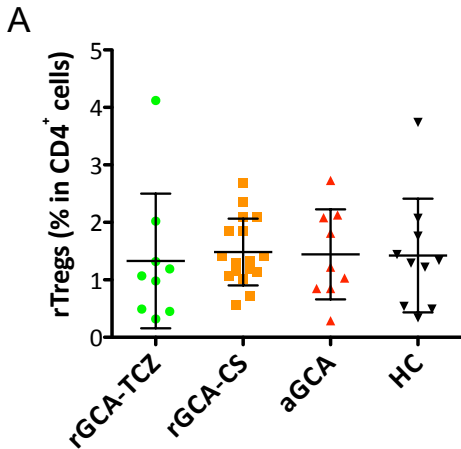
Supplementary Figure 3. Ki67 expression in CD4⁺Foxp3⁻ cells in GCA patients and healthy controls Frequencies of Ki67⁺ cells within CD4⁺Foxp3⁻ T-cells (**non Tregs**) in GCA patients (rGCA-TCZ, n = 5; rGCA-CS, n = 13; aGCA, n = 10) and HC (n = 6). Analysis: Student's t-test. Error bars represent means and SD.

Supplementary Figure 4. Co-expression of CD25 and CD161 within full-length Foxp3- and Foxp3 Δ 2-expressing CD4⁺Foxp3⁺Ki67⁺ T-cells. Expression of CD161 and CD25 in full-length (FL) Foxp3- and Foxp3 Δ 2-expressing CD4⁺Foxp3⁺Ki67⁺ T-cells in GCA patients (rGCA-TCZ, n = 5; rGCA-CS, n = 7; aGCA, n = 5) and HC (n = 5). Analysis: Paired Student's t-test. Error bars represent means and SD. Shapes and colors of the symbols identify individual patients and HC.

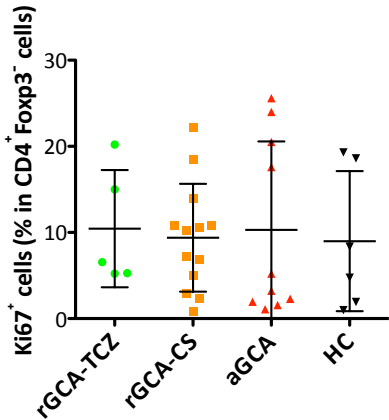
Supplementary Figure 5. Distribution of activated Tregs, resting Tregs, non-suppressive CD25⁺ cells, and non-Tregs within the CD4⁺CD25⁺ cells. Graph displaying the ratio between the percent of non-Tregs (subset IV, CD4⁺CD25⁺CD45RA⁻ cells) plus non-suppressing CD25⁺ cells (subset III, CD4⁺CD25⁺⁺CD45RA⁻ cells) compared to the percent of activated Tregs (subset II, CD4⁺CD25⁺⁺⁺CD45RA⁻ cells) plus resting Tregs (subset I; CD4⁺CD25⁺⁺CD45RA⁺ cells) in GCA patients (rGCA-TCZ, n = 8; rGCA-CS, n = 6; aGCA, n = 5) and HC (n = 5). Analysis: ANOVA. Error bars represent means and SD.



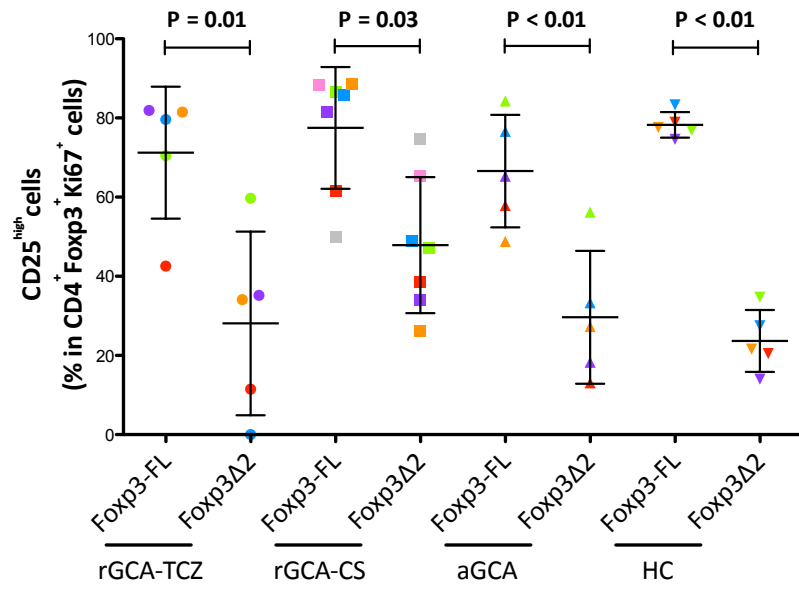
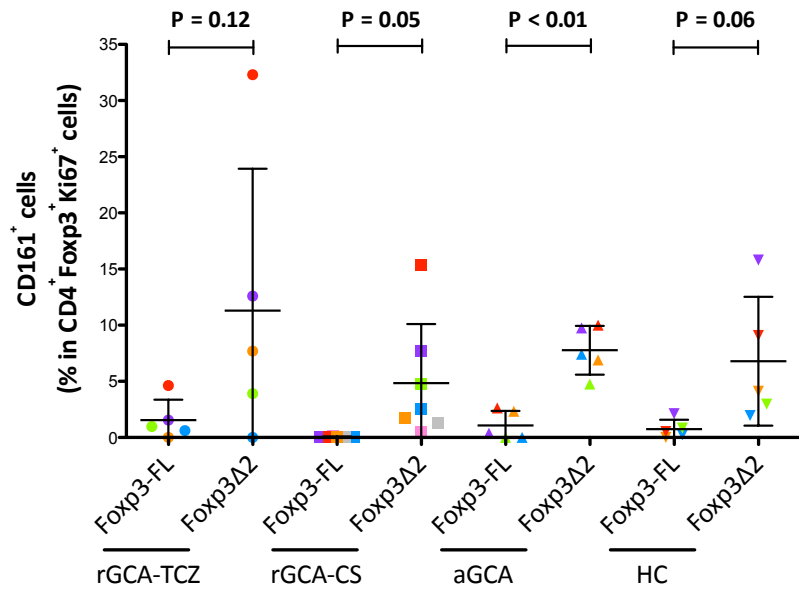
Suppl Figure 1



Suppl Figure 2



Suppl Figure 3



Suppl Figure 4

Suppl Figure 5

