



OPEN ACCESS

Open Access  
Scan to access more  
free content

## CONCISE REPORT

# Impact of baseline anti-cyclic citrullinated peptide-2 antibody concentration on efficacy outcomes following treatment with subcutaneous abatacept or adalimumab: 2-year results from the AMPLE trial

Jeremy Sokolove,<sup>1</sup> Michael Schiff,<sup>2</sup> Roy Fleischmann,<sup>3</sup> Michael E Weinblatt,<sup>4</sup> Sean E Connolly,<sup>5</sup> Alyssa Johnsen,<sup>5</sup> Jin Zhu,<sup>6</sup> Michael A Maldonado,<sup>5</sup> Salil Patel,<sup>5</sup> William H Robinson<sup>1</sup>**Handling editor** Tore K Kvien

► Additional material is published online only. To view please visit the journal online (<http://dx.doi.org/10.1136/annrheumdis-2015-207942>).

<sup>1</sup>VA Palo Alto Health Care System and Division of Immunology and Rheumatology, Stanford University School of Medicine, Palo Alto, California, USA

<sup>2</sup>Department of Rheumatology, University of Colorado, Denver, Colorado, USA

<sup>3</sup>Department of Internal Medicine, University of Texas Southwestern Medical Center, Dallas, Texas, USA

<sup>4</sup>Department of Rheumatology & Immunology, Brigham and Women's Hospital, Boston, Massachusetts, USA

<sup>5</sup>Immunoscience, Bristol-Myers Squibb, Princeton, New Jersey, USA

<sup>6</sup>Global Biometric Sciences, Bristol-Myers Squibb, Princeton, New Jersey, USA

**Correspondence to**

Dr Jeremy Sokolove, VA Palo Alto Health Care System, 3801 Miranda Avenue, Mail Stop 111G, Palo Alto, CA 94034, USA; [sokolove@stanford.edu](mailto:sokolove@stanford.edu)

Received 18 May 2015

Revised 28 July 2015

Accepted 19 August 2015

Published Online First

10 September 2015

**ABSTRACT**

**Objectives** To examine whether baseline anti-cyclic citrullinated peptide-2 (CCP2) antibody status and concentration correlated with clinical outcomes in patients treated with abatacept or adalimumab on background methotrexate (MTX) in the 2-year AMPLE (Abatacept versus adalimumab comparison in biologic-naïve rheumatoid arthritis subjects with background MTX) study.

**Methods** In this exploratory analysis, anti-CCP2 antibody concentration was measured at baseline, and antibody-positive patients were divided into equal quartiles, Q1–Q4, representing increasing antibody concentrations. Clinical outcomes analysed by baseline anti-CCP2 status and quartile included change from baseline in disease activity and disability and remission rates.

**Results** Baseline characteristics were generally comparable across quartiles and treatment groups. In both treatment groups, anti-CCP2 antibody-negative patients responded less well than antibody-positive patients. At year 2, improvements in disease activity and disability and remission rates were similar across Q1–Q3, but were numerically higher in Q4 in the abatacept group; in contrast, treatment effects were similar across all quartiles in the adalimumab group.

**Conclusions** In AMPLE, baseline anti-CCP2 positivity was associated with a better response for abatacept and adalimumab. Patients with the highest baseline anti-CCP2 antibody concentrations had better clinical response with abatacept than patients with lower concentrations, an association that was not observed with adalimumab.

**Trial registration number** NCT00929864.

**INTRODUCTION**

The introduction of multiple biologic disease-modifying antirheumatic drugs (DMARDs) and one new targeted synthetic DMARD has significantly improved rheumatoid arthritis (RA) treatment. However, better predictors of treatment response in individual patients are still needed.

Anti-citrullinated protein antibodies (ACPA) are a sensitive and highly specific marker of RA<sup>1</sup> and have been incorporated into the 2010 American College of Rheumatology (ACR)/European League

Against Rheumatism (EULAR) diagnostic criteria.<sup>2</sup> ACPA are present many years prior to the onset of clinical RA in many at-risk individuals, and 70%–80% of patients with RA are ACPA positive.<sup>3</sup> As clinical disease develops, ACPA concentration increases, the number of recognised epitopes expands and isotype usage evolves.<sup>4 5</sup> ACPA may also predict a more severe disease course with more erosive disease<sup>6</sup>; however, the clinical relevance of ACPA concentration is unclear.<sup>7</sup> The relationship between ACPA status/concentration and response to therapy has not been elucidated but is of interest.<sup>8</sup>

In the clinic, ACPA can be detected using anti-cyclic citrullinated peptide (CCP) ELISA, such as the CCP2 assay.<sup>9</sup> Here, we examined whether baseline anti-CCP2 IgG status and concentration influenced clinical outcomes in patients treated with abatacept or adalimumab in the head-to-head, 2-year AMPLE (Abatacept versus adalimumab comparison in biologic-naïve RA subjects with background methotrexate (MTX)) study.<sup>10 11</sup> AMPLE provided a unique opportunity to explore baseline anti-CCP2 concentration as a predictor of response to two therapies with different mechanisms of action.

**METHODS****Study design**

AMPLE (NCT00929864) was a 2-year, phase IIIb, randomised, investigator-blinded study. Biologic-naïve patients with active RA and an inadequate response to MTX were randomised to 125 mg subcutaneous abatacept weekly or 40 mg adalimumab bi-weekly, both on background MTX.<sup>10 11</sup>

**ACPA analysis**

Baseline anti-CCP2 antibody status (positive/negative) and concentration were determined using an anti-CCP2 IgG ELISA (Euro Diagnostica Immunoscans CCPlus, Malmö, Sweden; obtained from IBL America). Patients with a baseline anti-CCP2 IgG concentration of  $\geq 25$  AU/mL were considered to be positive and were further divided into equal quartiles according to concentration (Q1–Q4 (highest concentration)).



CrossMark

**To cite:** Sokolove J, Schiff M, Fleischmann R, et al. *Ann Rheum Dis* 2016;**75**:709–714.

**Table 1** Patient demographics and baseline characteristics

Characteristic	Quartile by anti-CCP2 concentration (AU/mL)									
	CCP2 negative		Q1, 28–235		Q2, 236–609		Q3, 613–1046		Q4, 1060–4894	
	ABA (n=66)	ADA (n=54)	ABA (n=42)	ADA (n=55)	ABA (n=51)	ADA (n=46)	ABA (n=46)	ADA (n=51)	ABA (n=46)	ADA (n=51)
Age, years	52.0 (24.0, 80.0)	58.0 (21.0, 83.0)	50.0 (22.0, 70.0)	50.0 (19.0, 78.0)	52.0 (21.0, 78.0)	49.0 (22.0, 73.0)	47.5 (25.0, 73.0)	52.0 (26.0, 78.0)	51.5 (19.0, 70.0)	52.0 (27.0, 85.0)
Female, %	84.8	85.2	88.1	83.6	80.4	87.0	82.6	80.4	78.3	72.5
White, %	92.4	83.3	88.1	87.3	72.5	69.6	71.7	74.5	76.1	68.6
Geographic region, %										
North America	86.4	90.7	71.4	63.6	70.6	67.4	65.2	60.8	52.2	64.7
South America	13.6	9.3	28.6	36.4	29.4	32.6	34.8	39.2	47.8	35.3
MTX dose at randomisation, mg/wk	15.0 (7.5, 105.0)	18.8 (7.5, 25.0)	20.0 (10.0, 25.0)	15.0 (7.5, 105)	15.0 (7.5, 25.0)	15.0 (7.5, 25.0)	15.0 (12.5, 25.0)	15.0 (10.0, 25.0)	15.0 (7.5, 25.0)	15.0 (7.5, 25.0)
Smoking status, %										
Current	27.3	13.0	21.4	25.5	31.4	21.7	32.6	25.5	23.9	27.5
Former	21.2	29.6	14.3	20.0	15.7	19.6	10.9	17.6	34.8	15.7
Never	51.5	57.4	64.3	54.5	52.9	58.7	56.5	56.9	41.3	56.9
Disease duration, years	1.0 (0.1, 4.6)	1.3 (0.0, 4.7)	1.8 (0.2, 4.5)	1.6 (0.1, 5.1)	1.7 (0.1, 5.1)	1.2 (0.1, 4.5)	1.8 (0.1, 4.8)	1.7 (0.1, 5.1)	2.0 (0.1, 4.8)	1.4 (0.0, 5.0)
Physical function, HAQ-DI	1.3 (0.0, 2.9)	1.4 (0.0, 2.6)	1.4 (0.0, 2.5)	1.3 (0.0, 2.5)	1.7 (0.0, 2.8)	1.6 (0.0, 2.9)	1.4 (0.0, 2.8)	1.6 (0.0, 3.0)	1.6 (0.0, 2.9)	1.8 (0.0, 2.8)
CRP (mg/dL)	0.6 (0.0, 10.4)	0.6 (0.0, 42.2)	0.8 (0.1, 8.4)	0.6 (0.0, 4.8)	0.9 (0.0, 9.4)	1.3 (0.1, 5.8)	0.9 (0.1, 11.3)	1.0 (0.0, 9.0)	0.9 (0.0, 13.9)	0.7 (0.0, 11.8)
DAS28 (CRP)	5.5 (2.5, 7.4)	5.3 (3.0, 7.3)	5.0 (3.1, 7.6)	5.5 (3.1, 7.3)	5.6 (3.5, 7.6)	6.0 (2.8, 7.4)	5.5 (2.8, 8.1)	5.7 (3.7, 7.9)	6.0 (2.7, 7.8)	5.3 (1.7, 7.8)
RF positive, %	42.4	51.9	85.7	92.7	98.0	93.5	100.0	96.1	95.7	100.0
RF concentration, U/mL	4.7 (0.0, 368.6)	6.1 (0.1, 388.3)	119.5 (1.3, 500.9)	137.5 (0.4, 500.9)	225.6 (2.0, 500.9)	270.9 (3.6, 500.9)	298.9 (14.0, 500.9)	266.9 (3.1, 500.9)	377.1 (2.0, 500.9)	351.0 (7.7, 500.9)
Total score (X-ray)	3.5 (0.0, 86.5)	6.5 (0.0, 114.5)	7.0 (0.0, 232.5)	8.5 (0.0, 143.0)	16.5 (0.0, 209.5)	8.5 (0.0, 201.0)	7.5 (0.0, 97.0)	7.0 (0.0, 144.0)	8.5 (0.0, 161.5)	9.0 (0.0, 107.0)

Data are expressed as median (min, max), unless otherwise stated.

ABA, abatacept; ADA, adalimumab; CCP2, cyclic citrullinated peptide-2; CRP, C reactive protein; DAS28, Disease Activity Score 28; HAQ-DI, Health Assessment Questionnaire Disability Index; MTX, methotrexate; Q, quartile; RF, rheumatoid factor.

## Outcome measures

Efficacy outcomes up to day 729 were assessed according to baseline anti-CCP2 IgG status and concentration quartile. Outcomes were adjusted mean change from baseline in Disease Activity Score 28 (C reactive protein; DAS28 (CRP)) and Health Assessment Questionnaire Disability Index (HAQ-DI) over time, percentage of patients achieving DAS28 (CRP) <2.6, ACR/EULAR remission rates defined by Clinical Disease Activity Index (CDAI;  $\leq 2.8$ ) or Simplified Disease Activity Index (SDAI;  $\leq 3.3$ ) criteria and ACR 50/70 response rates.

## Statistical analyses

Analyses included all randomised and treated patients. Adjusted mean change from baseline for DAS28 (CRP) and HAQ-DI was determined for each time point using analysis of covariance (ANCOVA), with treatment and baseline DAS28 (CRP) stratification as factors and baseline values as a covariate. For comparisons between Q1–Q3 and Q4, anti-CCP2-negative and Q4, and abatacept Q4 and adalimumab Q4, the adjusted mean difference was estimated using an ANCOVA model with treatment, quartile, treatment by quartile interaction and baseline DAS28 (CRP) stratification as factors and baseline values as a covariate.

## RESULTS

### Patient disposition and baseline characteristics

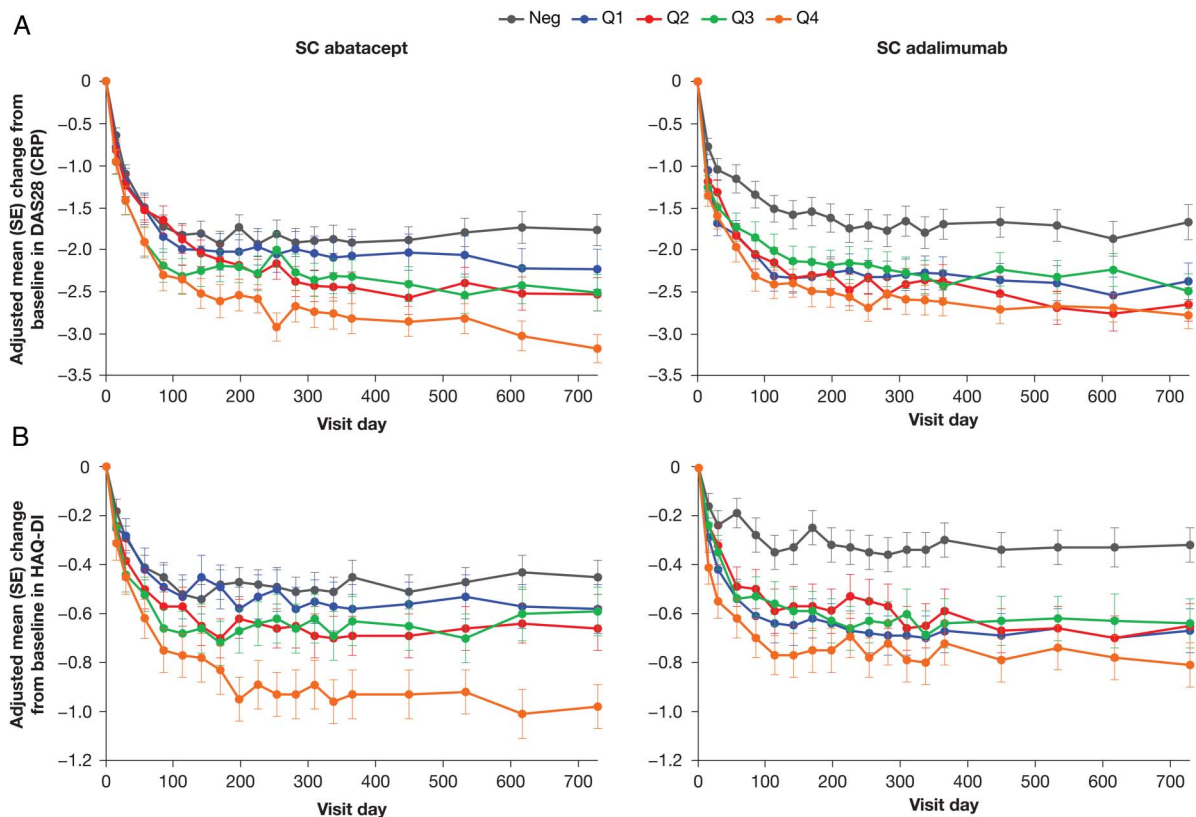
In AMPLE, 646 patients were randomised (abatacept, n=318; adalimumab, n=328), of whom 252 (79.2%) abatacept-treated

and 245 (74.7%) adalimumab-treated patients completed year 2.<sup>10</sup> Serum samples were available from 508 patients at baseline: 120 (23.6%) were anti-CCP2 negative and 388 (76.4%) were anti-CCP2 positive. The number of patients per treatment group was similar in each anti-CCP2 quartile, with no consistent differences in baseline characteristics across anti-CCP2 quartiles or treatment groups (table 1 and see supplementary table S1). Quartile limits are shown in table 1.

### Mean change from baseline in disease activity and disability

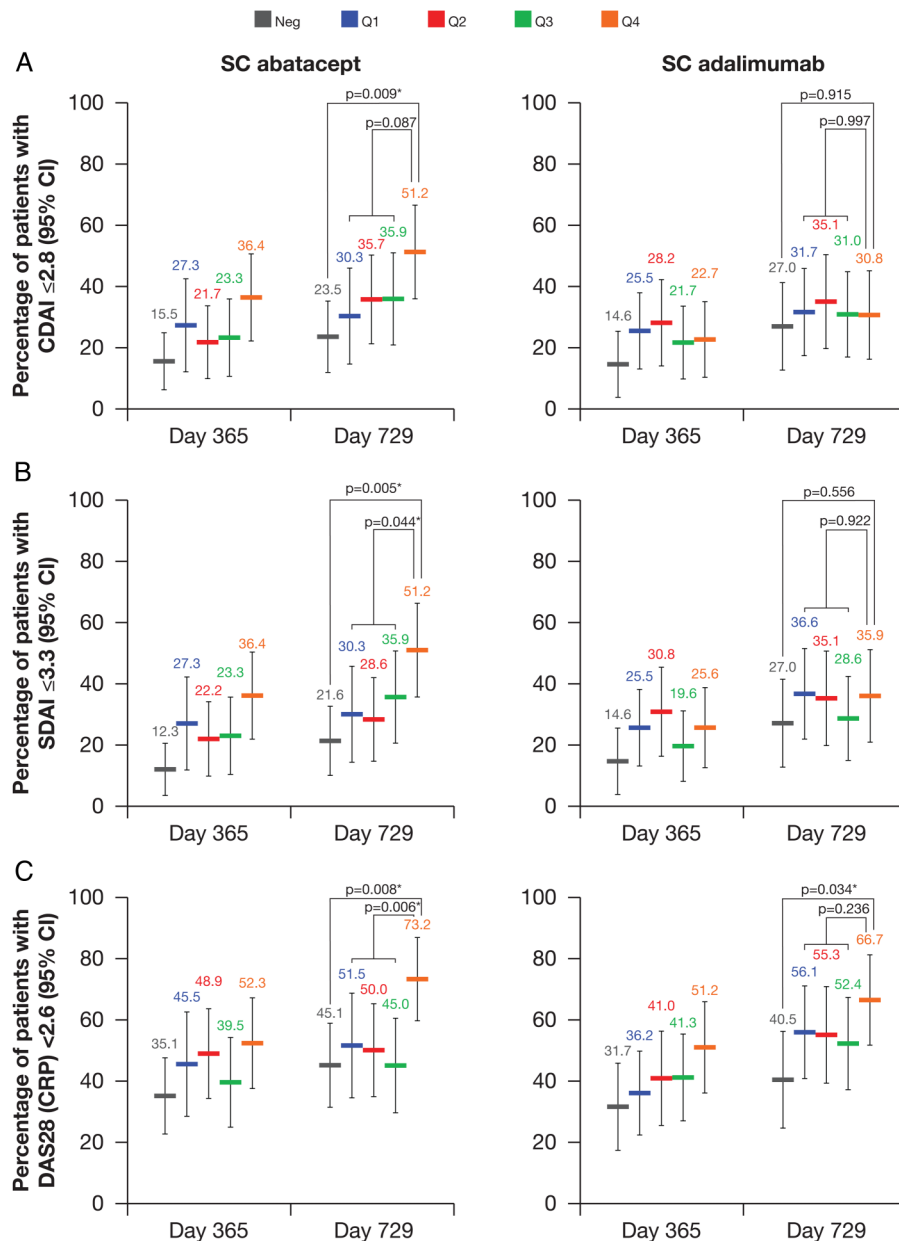
Although at least a ‘moderate’ EULAR response was observed in both treatment groups, improvements in DAS28 (CRP) were significantly less pronounced in patients who were anti-CCP2 negative at baseline than in those who were anti-CCP2 positive (figure 1A). The mean improvement in DAS28 (CRP) at day 729 for abatacept was significantly greater in Q4 than in Q1–Q3 combined (adjusted mean treatment difference (AMTD) (95% CI) Q1–Q3 vs Q4:  $-0.69$  ( $-1.15$  to  $-0.23$ );  $p=0.003$ ), whereas in the adalimumab group, improvement was similar across all quartiles (AMTD (95% CI) Q1–Q3 vs Q4:  $-0.21$  ( $-0.64$  to  $0.23$ );  $p=0.358$ ). The AMTD (95% CI) for abatacept Q4 versus adalimumab Q4 was  $-0.45$  ( $-1.00$  to  $0.10$ );  $p=0.112$ ).

A similar pattern was seen for HAQ-DI: mean changes from baseline were smallest in patients who were anti-CCP2 negative at baseline in both treatment groups (figure 1B). Mean change from baseline in HAQ-DI was similar across all anti-CCP2



**Figure 1** (A) Adjusted mean (SE) change from baseline in Disease Activity Score 28 (C reactive protein; DAS28 (CRP)) by baseline cyclic citrullinated peptide-2 (CCP2)-IgG status and quartile. Estimated mean treatment difference at day 729 for anti-CCP2 quartile (Q)1–Q3 combined vs Q4: subcutaneous (SC) abatacept  $p=0.003$ , SC adalimumab  $p=0.358$ ; for anti-CCP2 negative (Neg) vs Q4: SC abatacept  $p<0.0001$ , SC adalimumab  $p=0.0006$ . (B) Adjusted mean (SE) change from baseline in Health Assessment Questionnaire Disability Index (HAQ-DI) by baseline CCP2-IgG status and quartile. Estimated mean treatment difference at day 729 for Q1–Q3 combined vs Q4: SC abatacept  $p=0.021$ , SC adalimumab  $p=0.735$ ; for Neg vs Q4: SC abatacept  $p=0.002$ , SC adalimumab  $p=0.005$ . Adjusted mean changes from baseline were determined for each time point by analysis of covariance, with treatment and DAS28 (CRP) stratification as factors and baseline values as a covariate. Number of patients in each quartile group: Q1 (28–235)=97; Q2 (236–609)=97; Q3 (613–1046)=97; Q4 (1060–4894)=97; Neg (<25)=120.

**Figure 2** Percentage (95% CI) of patients achieving (A) Clinical Disease Activity Index (CDAI) remission rates by baseline cyclic citrullinated peptide-2 (CCP2)-IgG status and quartile. (B) Simplified Disease Activity Index (SDAI) remission rates by baseline CCP2-IgG status and quartile. (C) Disease Activity Score 28 (C reactive protein; DAS28 (CRP)) <2.6 by baseline CCP2-IgG status and quartile. p Values indicate the statistical significance of the estimated mean treatment difference at day 729 for anti-CCP2 quartile (Q1)–Q3 combined vs Q4 and for anti-CCP2 negative (Neg) vs Q4. Asterisks indicate p values ≤0.05. Number of patients in each quartile group: Q1 (28–235)=97; Q2 (236–609)=97; Q3 (613–1046)=97; Q4 (1060–4894)=97; Neg (<25)=120. SC, subcutaneous.



quartiles for adalimumab, but significantly greater in abatacept Q4 than in Q1–Q3. The AMTD (95% CI) for Q1–Q3 versus Q4 for abatacept was  $-0.24$  ( $-0.44$  to  $-0.04$ ;  $p=0.021$ ), and for adalimumab was  $-0.03$  ( $-0.23$  to  $0.16$ ;  $p=0.735$ ). The AMTD (95% CI) for abatacept Q4 versus adalimumab Q4 was  $-0.17$  ( $-0.41$  to  $0.07$ ;  $p=0.173$ ).

**Remission rates, DAS28 (CRP) <2.6 and ACR response rates**

In both treatment groups, the percentage of patients achieving CDAI or SDAI remission or DAS28 (CRP) <2.6 was lower in the baseline anti-CCP2 antibody-negative subgroup than in the anti-CCP2 antibody-positive subgroup (figure 2). The percentages of patients achieving CDAI (figure 2A) and SDAI (figure 2B) remission were highest in Q4 versus Q1–Q3 in the abatacept, but not the adalimumab, treatment group at days 365 and 729; however, the percentage of patients achieving DAS28 (CRP) <2.6 was highest in Q4 for both abatacept and adalimumab (figure 2C). The trend in the anti-CCP2 interquartile differences was not as clear for ACR response rates (data not shown).

Overall, CDAI and SDAI remission rates tended to be higher at day 729 than at day 365 regardless of treatment, anti-CCP2 status or concentration. At day 729, CDAI and SDAI remission rates were highest in the abatacept Q4 group.

**DISCUSSION**

Both adalimumab and abatacept were more effective in patients who were anti-CCP2 positive than in those who were anti-CCP2 negative at baseline. However, there were differences in the pattern of response to the two treatments when assessed by baseline antibody concentration: abatacept treatment effects were more pronounced in the highest anti-CCP2 quartile than in lower quartiles, whereas this effect was not consistently demonstrated for adalimumab. Interquartile differences for abatacept were most prominent when assessed with continuous measures such as DAS28 (CRP) and HAQ-DI versus binary response measures, possibly due to the increased sensitivity to change of continuous measures.

The improved clinical efficacy in anti-CCP2-positive versus anti-CCP2-negative patients for both adalimumab and abatacept



suggests that ACPA status may be a relevant factor in predicting treatment response. In contrast to our results, previous studies have suggested that seropositive patients respond less well to tumour necrosis factor (TNF) inhibition than seronegative patients, or that response correlates inversely with autoantibody concentration.<sup>12–14</sup> High baseline rheumatoid factor (RF) IgA concentration has been associated with poor response to TNF inhibitor therapy.<sup>15</sup> The disparities between studies could be due to differences in patient populations, study setting or ACPA assay used; further study of predictive factors of treatment response in RA with standardisation of biomarker assays is warranted.

The reason for the observed differential pattern of response across quartiles for abatacept and adalimumab is unknown, but may be related to their different mechanisms of action. Abatacept selectively modulates T-cell costimulation and auto-antibody production via interaction with B cells, whereas adalimumab binds directly to TNF- $\alpha$ . The B-cell inhibitor rituximab has also been shown to be more effective in patients with RA who are ACPA or RF seropositive versus seronegative.<sup>16</sup> In this analysis, 90% of patients in Q4 were also RF positive at baseline; in registry and cohort studies, better abatacept efficacy and retention has been found to be associated with double-positivity or higher ACPA concentration.<sup>17–20</sup> Importantly, our analysis was a within-study comparison of two treatments, removing causes of variation inherent in cross-study comparisons.

The trend for continued improvement in remission rates, particularly in the Q4 abatacept group, may suggest that the effects of costimulatory blockade increases over time. The clinical relevance of this observation is unknown.

This exploratory analysis has some inherent limitations. Baseline serum samples were not available for all patients and there were differences in several baseline characteristics between groups (although differences were not consistent across quartiles or treatment groups). As the analysis was not preplanned, patients were not stratified by anti-CCP2 concentration at randomisation and lack of blinding in AMPLE may have influenced the patient-reported outcome measures. Additionally, there is no standard, universally accepted ACPA assay and so findings may have differed with an alternative assay. The anti-CCP2 ELISA used here demonstrated relative linearity across the assay standards and based on the distribution of measured concentrations in the anti-CCP2-positive population.

In this exploratory analysis from the AMPLE study, treatment effects for both abatacept and adalimumab were greater in patients who were anti-CCP2 positive at baseline than in those who were anti-CCP2 negative. Higher baseline anti-CCP2 concentration correlated with better DAS28 (CRP) and HAQ-DI responses and greater CDAI and SDAI remission rates with abatacept but not with adalimumab (both on background MTX). The prognostic and predictive value of ACPA status and concentration in RA, however, needs to be further examined beyond this exploratory analysis to improve our understanding of the heterogeneity in response and inform treatment decision making in the clinic.

**Acknowledgements** Professional medical writing and editorial assistance was provided by Andreas Sakka at Caudex and was funded by Bristol-Myers Squibb. Sandra Overfield (Clinical Operations, BMS) managed the study execution and sample collection. Lauren J Lahey, Chris Rhodes and Catriona A Wagner (VA Palo Alto Health Care System and Stanford University) assisted with data collection, including sample handling and performing anti-CCP2 ELISA testing.

**Contributors** JS designed and conducted the majority of experiments, interpreted the data and assisted in manuscript preparation. MS, RF, MEW and WHR were involved in the study design and interpretation of data and assisted in the

preparation of the manuscript. SEC and AJ provided input into the study design and were involved in analysis and interpretation of data and manuscript preparation. JZ conducted the statistical analyses and assisted in manuscript preparation. MAM contributed to the design of the study, provided input into the interpretation of data and assisted in manuscript preparation. SP was involved in study design, interpretation of data and contributed to manuscript preparation.

**Funding** This study was funded by Bristol-Myers Squibb.

**Competing interests** JS received research funding support from Bristol-Myers Squibb. MS received consultancy fees from AbbVie, Amgen, Antares, Bristol-Myers Squibb, Eli Lilly, Horizon, Johnson & Johnson, Pfizer, Roche and UCB; served on speakers bureaus for AbbVie; and received research funding from UCB. RF received grant/research support from AbbVie, Amgen, Astellas, AstraZeneca, Bristol-Myers Squibb, Celgene, Genzyme, Janssen, Eli Lilly, Merck, Novartis, Pfizer, Roche, Sanofi Aventis and UCB; and acted as a consultant for AbbVie, Amgen, AstraZeneca, Bristol-Myers Squibb, Celgene, Janssen, Eli Lilly, Pfizer, Roche, Sanofi-Aventis and UCB. MEW received consulting fees from Bristol-Myers Squibb, Crescendo Bioscience, UCB, AbbVie, Roche, Janssen, Pfizer, Lilly, Amgen and Novartis; and received grant support from Bristol-Myers Squibb, Crescendo Bioscience and UCB. SEC, MAM and SP are employees of and hold stock in Bristol-Myers Squibb. AJ and JZ are employees of Bristol-Myers Squibb. WHR has no conflicts of interest to report.

**Ethics approval** The protocol was approved by the institutional review boards and independent ethics committees at the participating sites.

**Provenance and peer review** Not commissioned; externally peer reviewed.

**Data sharing statement** ACR response data available from authors upon request.

**Open Access** This is an Open Access article distributed in accordance with the Creative Commons Attribution Non Commercial (CC BY-NC 4.0) license, which permits others to distribute, remix, adapt, build upon this work non-commercially, and license their derivative works on different terms, provided the original work is properly cited and the use is non-commercial. See: <http://creativecommons.org/licenses/by-nc/4.0/>

## REFERENCES

- 1 Zendman AJ, van Venrooij WJ, Pruijn GJ. Use and significance of anti-CCP autoantibodies in rheumatoid arthritis. *Rheumatology (Oxford)* 2006;45:20–5.
- 2 Aletaha D, Neogi T, Silman AJ, et al. 2010 Rheumatoid arthritis classification criteria: an American College of Rheumatology/European League Against Rheumatism collaborative initiative. *Arthritis Rheum* 2010;62:2569–81.
- 3 Nielen MM, van Schaardenburg D, Reesink HW, et al. Specific autoantibodies precede the symptoms of rheumatoid arthritis: a study of serial measurements in blood donors. *Arthritis Rheum* 2004;50:380–6.
- 4 Sokolove J, Bromberg R, Deane KD, et al. Autoantibody epitope spreading in the pre-clinical phase predicts progression to rheumatoid arthritis. *PLoS One* 2012;7:e35296.
- 5 Willemze A, Trouw LA, Toes RE, et al. The influence of ACPA status and characteristics on the course of RA. *Nat Rev Rheumatol* 2012;8:144–52.
- 6 van der Helm-van Mil AH, Verpoort KN, Breedveld FC, et al. Antibodies to citrullinated proteins and differences in clinical progression of rheumatoid arthritis. *Arthritis Res Ther* 2005;7:R949–58.
- 7 Ursum J, Bos WH, van Dillen N, et al. Levels of anti-citrullinated protein antibodies and IgM rheumatoid factor are not associated with outcome in early arthritis patients: a cohort study. *Arthritis Res Ther* 2010;12:R8.
- 8 Lv Q, Yin Y, Li X, et al. The status of rheumatoid factor and anti-cyclic citrullinated peptide antibody are not associated with the effect of anti-TNF $\alpha$  agent treatment in patients with rheumatoid arthritis: a meta-analysis. *PLoS ONE* 2014;9:e89442.
- 9 Pruijn GJ, Wiik A, van Venrooij WJ. The use of citrullinated peptides and proteins for the diagnosis of rheumatoid arthritis. *Arthritis Res Ther* 2010;12:203.
- 10 Schiff M, Weinblatt ME, Valente R, et al. Head-to-head comparison of subcutaneous abatacept versus adalimumab for rheumatoid arthritis: two-year efficacy and safety findings from AMPLE trial. *Ann Rheum Dis* 2014;73:86–94.
- 11 Weinblatt ME, Schiff M, Valente R, et al. Head-to-head comparison of subcutaneous abatacept versus adalimumab for rheumatoid arthritis: Findings of a phase IIIb, multinational, prospective, randomized study. *Arthritis Rheum* 2013;65:28–38.
- 12 Pomirleanu C, Ancuta C, Miu S, et al. A predictive model for remission and low disease activity in patients with established rheumatoid arthritis receiving TNF blockers. *Clin Rheumatol* 2013;32:665–70.
- 13 Fisher BA, Plant D, Lundberg K, et al. Heterogeneity of anticitrullinated peptide antibodies and response to anti-tumor necrosis factor agents in rheumatoid arthritis. *J Rheumatol* 2012;39:929–32.
- 14 Potter C, Hyrich KL, Tracey A, et al. Association of rheumatoid factor and anti-cyclic citrullinated peptide positivity, but not carriage of shared epitope or PTPN22 susceptibility variants, with anti-tumour necrosis factor response in rheumatoid arthritis. *Ann Rheum Dis* 2009;68:69–74.

- 15 Bobbio-Pallavicini F, Caporali R, Alpini C, *et al.* High IgA rheumatoid factor levels are associated with poor clinical response to tumour necrosis factor alpha inhibitors in rheumatoid arthritis. *Ann Rheum Dis* 2007;66:302–7.
- 16 Emery P, Fleischmann R, Filipowicz-Sosnowska A, *et al.* The efficacy and safety of rituximab in patients with active rheumatoid arthritis despite methotrexate treatment: results of a phase IIB randomized, double-blind, placebo-controlled, dose-ranging trial. *Arthritis Rheum* 2006;54:1390–400.
- 17 Gottenberg JE, Ravaud P, Bardin T, *et al.* Positivity for RF/anti-CCP is associated with a better response to abatacept: data from the “Orencia and Rheumatoid Arthritis” (ORA) registry. *Ann Rheum Dis* 2011; 70(Suppl 3):74.
- 18 Gottenberg JE, Neto D, Gomez-Reino J, *et al.* Positivity for rheumatoid factor and anti-cyclic citrullinated peptide is associated with better drug retention of abatacept: data from a pan-European analysis of RA registries. *Ann Rheum Dis* 2014;73(Suppl 2):502.
- 19 Fujii T, Sekiguchi M, Matsui K, *et al.* Very high titer of anti-citrullinated protein antibodies is associated with the achievement of clinical remission by abatacept in biologic-naïve patients with rheumatoid arthritis (the ABROAD study). *Ann Rheum Dis* 2013;72 (Suppl 3):889.
- 20 Nüßlein H, Alten R, Galeazzi M, *et al.* Two-year retention and effectiveness of IV abatacept in real-life setting: results from the ACTION study. *Ann Rheum Dis* 2014;73(Suppl 2):500.

**Supplementary Table 1 Additional patient demographics and baseline characteristics**

Quartile, anti-CCP2 concentration limits	CCP2 negative		Q1, 28–235		Q2, 236–609		Q3, 613–1046		Q4, 1060–4894	
	ABA (n=66)	ADA (n=54)	ABA (n=42)	ADA (n=55)	ABA (n=51)	ADA (n=46)	ABA (n=46)	ADA (n=51)	ABA (n=46)	ADA (n=51)
Weight, kg	82.1 (49.9, 126.3)	84.1 (57.6, 137.0)	80.2 (51.3, 120.7)	76.7 (41.0, 140.2)	73.6 (42.4, 156.5)	72.7 (50.7, 192.3)	81.6 (47.3, 144.2)	74.2 (45.5, 129.7)	74.4 (45.9, 140.0)	78.1 (46.4, 134.3)
Duration of disease category, %										
<6 months	27.3	16.7	11.9	16.4	19.6	26.1	10.9	13.7	15.2	21.6
≥6 months	72.7	83.3	88.1	83.6	80.4	73.9	89.1	86.3	84.8	78.4
Tender joint count	27.5 (0.0, 64.0)	29.0 (2.0, 67.0)	17.0 (2.0, 67.0)	21.0 (2.0, 68.0)	24.0 (6.0, 65.0)	24.5 (0.0, 64.0)	19.5 (1.0, 62.0)	25.0 (3.0, 64.0)	21.0 (5.0, 51.0)	23.0 (0.0, 64.0)
Swollen joint count	12.5 (0.0, 52.0)	12.0 (3.0, 48.0)	11.5 (4.0, 55.0)	15.0 (0.0, 47.0)	15.0 (2.0, 48.0)	12.0 (0.0, 55.0)	13.0 (0.0, 57.0)	13.0 (4.0, 49.0)	15.0 (0.0, 38.0)	15.0 (0.0, 34.0)
Subject pain assessment, VAS 100 mm	69.0 (12.0, 95.0)	69.0 (4.0, 98.0)	69.0 (22.0, 92.0)	68.3 (15.0, 97.0)	74.0 (7.0, 95.0)	63.0 (11.0, 99.0)	61.0 (14.0, 97.0)	76.0 (0.0, 99.0)	67.0 (6.0, 100.0)	63.0 (6.0, 98.0)
Subject global assessment, VAS 100 mm	60.0 (9.0, 98.0)	63.5 (6.0, 97.0)	60.0 (11.0, 91.0)	67.0 (11.0, 98.0)	71.0 (1.0, 100.0)	62.0 (11.0, 97.0)	60.0 (3.0, 91.0)	63.0 (0.0, 98.0)	68.5 (7.0, 100.0)	60.0 (3.0, 99.0)
Physician global assessment, VAS 100 mm	61.5 (10.0, 95.0)	60.5 (6.0, 94.0)	58.5 (27.0, 91.0)	57.0 (31.0, 96.0)	62.0 (13.0, 97.0)	65.0 (14.0, 95.0)	60.0 (12.0, 95.0)	60.0 (19.0, 88.0)	55.0 (20.0, 91.0)	63.0 (0.0, 100.0)
DAS28 (CRP) by category, %										
<3.2	6.1	3.7	2.4	1.8	0	4.3	2.2	0	2.2	3.9
3.2–5.1	34.8	33.3	50.0	32.7	31.4	23.9	28.3	31.4	26.1	31.4
>5.1	59.1	63.0	47.6	65.5	68.6	71.7	69.6	68.6	71.7	64.7
Joint space narrowing score	1.3 (0.0, 51.5)	2.0 (0.0, 56.5)	2.0 (0.0, 83.0)	4.0 (0.0, 68.0)	4.5 (0.0, 111.5)	2.0 (0.0, 115.0)	1.5 (0.0, 46.0)	2.3 (0.0, 70.5)	3.0 (0.0, 73.5)	2.0 (0.0, 48.0)

Erosion score	2.0 (0.0, 35.0)	3.8 (0.0, 58.0)	3.5 (0.0, 149.5)	5.8 (0.0, 75.0)	10.3 (0.0, 121.5)	5.5 (0.0, 123.0)	5.5 (0.0, 58.0)	4.8 (0.0, 73.5)	4.0 (0.0, 88.0)	5.0 (0.0, 59.5)
Estimated annual TSS progression	3.6 (0.0, 365.0)	4.6 (0.0, 93.8)	5.0 (0.0, 51.7)	6.6 (0.0, 228.8)	8.9 (0.0, 567.5)	6.0 (0.0, 275.0)	4.0 (0.0, 130.0)	6.0 (0.0, 176.7)	4.5 (0.0, 420.0)	5.0 (0.0, 57.5)

Data are expressed as median (min, max), unless otherwise stated.

ABA, abatacept; ADA, adalimumab; CCP2, cyclic citrullinated peptide-2; CRP, C-reactive protein; DAS28, Disease Activity Score 28; Q, quartile; TSS, total Sharp score; VAS, visual analogue scale.