



OPEN ACCESS

2015 Gout classification criteria: an American College of Rheumatology/European League Against Rheumatism collaborative initiative

Tuhina Neogi,¹ Tim L Th A Jansen,^{2,3} Nicola Dalbeth,⁴ Jaap Fransen,³ H Ralph Schumacher,⁵ Dianne Berendsen,³ Melanie Brown,⁶ Hyon Choi,¹ N Lawrence Edwards,⁷ Hein J E M Janssens,³ Frédéric Lioté,⁸ Raymond P Naden,⁹ George Nuki,¹⁰ Alexis Ogdie,⁵ Fernando Perez-Ruiz,¹¹ Kenneth Saag,¹² Jasvinder A Singh,¹³ John S Sundry,^{14,15} Anne-Kathrin Tausche,¹⁶ Janitzia Vaquez-Mellado,¹⁷ Steven A Yarows,¹⁸ William J Taylor⁶

Handling editor Tore K Kvien

► Additional material is published online only. To view please visit the journal online (<http://dx.doi.org/10.1136/annrheumdis-2015-208237>)

For numbered affiliations see end of article.

Correspondence to

Dr Tuhina Neogi, Boston University School of Medicine, X building, Suite 200, 650 Albany Street, Boston, MA 02118, USA; tneogi@bu.edu

This article is published simultaneously in the October 2015 issue of *Arthritis & Rheumatology*.

Supported by the American College of Rheumatology and the European League Against Rheumatism.

Accepted 14 July 2015



Open Access
Scan to access more
free content



CrossMark

To cite: Neogi T, Jansen TLTA, Dalbeth N, et al. *Ann Rheum Dis* 2015;**74**:1789–1798.

ABSTRACT

Objective Existing criteria for the classification of gout have suboptimal sensitivity and/or specificity, and were developed at a time when advanced imaging was not available. The current effort was undertaken to develop new classification criteria for gout.

Methods An international group of investigators, supported by the American College of Rheumatology and the European League Against Rheumatism, conducted a systematic review of the literature on advanced imaging of gout, a diagnostic study in which the presence of monosodium urate monohydrate (MSU) crystals in synovial fluid or tophus was the gold standard, a ranking exercise of paper patient cases, and a multi-criterion decision analysis exercise. These data formed the basis for developing the classification criteria, which were tested in an independent data set.

Results The entry criterion for the new classification criteria requires the occurrence of at least one episode of peripheral joint or bursal swelling, pain, or tenderness. The presence of MSU crystals in a symptomatic joint/bursa (ie, synovial fluid) or in a tophus is a sufficient criterion for classification of the subject as having gout, and does not require further scoring. The domains of the new classification criteria include clinical (pattern of joint/bursa involvement, characteristics and time course of symptomatic episodes), laboratory (serum urate, MSU-negative synovial fluid aspirate), and imaging (double-contour sign on ultrasound or urate on dual-energy CT, radiographic gout-related erosion). The sensitivity and specificity of the criteria are high (92% and 89%, respectively).

Conclusions The new classification criteria, developed using a data-driven and decision-analytic approach, have excellent performance characteristics and incorporate current state-of-the-art evidence regarding gout.

INTRODUCTION

Gout, which is characterised by deposition of monosodium urate monohydrate (MSU) in synovial fluid and other tissues, is the most common form of inflammatory arthritis, with a prevalence of 3.9% in the USA,¹ 0.9% in France,^{2–3} 1.4–2.5% in the UK,^{4–6} 1.4% in Germany,⁵ and 3.2% (European ancestry)–6.1% (Maori ancestry) in New Zealand.⁷ Over the last decade, several new therapies for gout

- This criteria set has been approved by the American College of Rheumatology (ACR) Board of Directors and the European League Against Rheumatism (EULAR) Executive Committee.
- This signifies that the criteria set has been quantitatively validated using patient data, and it has undergone validation based on an independent data set.
- All ACR/EULAR approved criteria sets are expected to undergo intermittent updates.
- The American College of Rheumatology is an independent, professional, medical and scientific society which does not guarantee, warrant, or endorse any commercial product or service.

have been approved by regulatory agencies or are being tested.⁸ The conduct of trials that lead to drug approval, and of observational studies that provide insights into risk factors, genetic associations and general epidemiology of gout, is critically dependent on appropriate identification of individuals with gout for inclusion in such studies. Classification criteria serve the purpose of enabling standardised assembly of a relatively homogeneous group of individuals with the disease of interest for enrolment into such studies.⁹

There are several existing sets of classification criteria or diagnostic rules for gout,^{10–14} with the most widely used being the 1977 American Rheumatism Association (now the American College of Rheumatology (ACR)) preliminary criteria for the classification of the acute arthritis of primary gout.¹⁰ These preliminary criteria were intended for identifying the acute arthritis of gout and not necessarily for intercritical gout, the spectrum of comparator diseases was limited, and physician diagnosis was the gold standard. In a recent study in which the gold standard was MSU crystal status in synovial fluid or nodule aspirate among individuals with a broad range of diagnoses, the sensitivity of existing criteria sets^{10–14} ranged from

Criteria

57.6% to 100% (ie, 100% with MSU crystal identification as sufficient for classification as gout), whereas the specificity ranged from 34.3% to 86.4%, with no single criteria set having excellent sensitivity and specificity.^{15 16} Such findings highlight the need for classification criteria with improved performance characteristics, with higher specificity likely to be favoured in order to ensure that individuals enrolled into trials for treatments with unclear efficacy and safety truly have gout.

Accurate classification of gout without crystal documentation for recruitment into studies is also needed, since the majority of cases of gout are managed in primary or acute care settings,^{17 18} where synovial fluid aspiration and polarising microscopy are not commonly performed. Additionally, the existing published criteria were developed at a time when advanced imaging modalities, such as ultrasonography or dual-energy CT (DECT), had not been studied; their utility for gout classification in the context of other clinical and laboratory parameters is not known.

To address these issues, an international collaborative working group to develop new classification criteria for gout was convened with the support of the ACR and the European League Against Rheumatism (EULAR).¹⁹ The final results are reported here.

METHODS

The major steps taken to develop the new classification criteria are outlined in [figure 1](#).

Phase 1

To identify factors to be considered for the content of classification criteria for gout, three studies were undertaken ([figure 1](#)). First, clinicians with expertise in gout and patients with gout identified factors, they believed, to discriminate gout from other rheumatic diseases in a Delphi exercise.²⁰ Second, we tested items from this Delphi exercise that were agreed to be potentially discriminatory for gout and items from existing classification criteria in a cross-sectional diagnostic study (Study for Updated Gout Classification Criteria (SUGAR)).²¹ Briefly, this study included 983 consecutive subjects (exceeding the recruitment target of 860) who had had joint swelling or a subcutaneous nodule within the previous 2 weeks, either of which was judged to be conceivably due to gout. These subjects were recruited from rheumatology clinics in 16 countries. All subjects

were required to undergo aspiration of the symptomatic joint or nodule, with crystal examination performed by a certified observer,^{21 22} and imaging (ultrasound, radiography). Those who were MSU crystal positive were designated as cases while those who were MSU crystal negative were designated as controls, irrespective of clinical diagnosis. Analyses in the SUGAR study were conducted among two-thirds of the sample (derivation data set; n=653); the other one-third (n=330) were analysed as the validation data set for the final criteria. Third, we conducted a systematic literature review of advanced imaging modalities for classifying gout.²³

Phase 2

Rationale

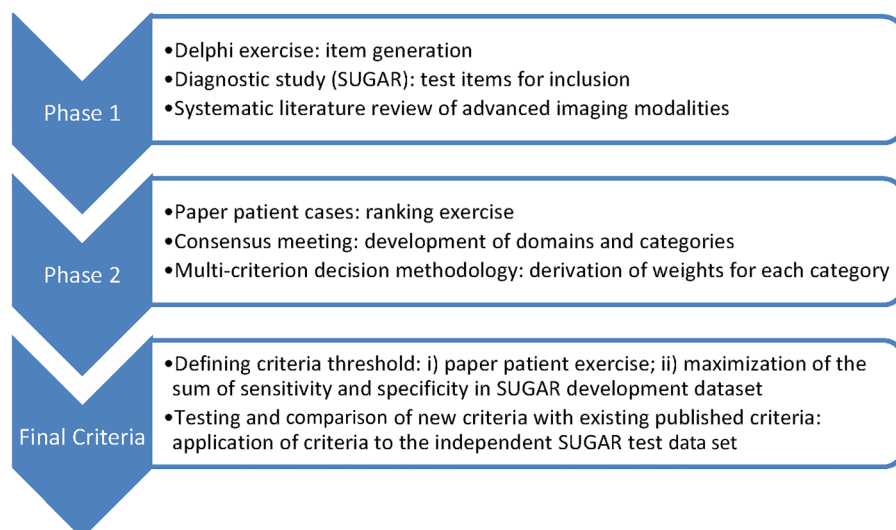
It was recognised that the SUGAR study and the imaging review may have some limitations. The SUGAR study might have been prone to selection bias as MSU crystal positivity was required in order for a subject to be considered a case; this may have introduced bias towards larger joints, more severe disease and/or tophaceous disease. In addition, subjects were recruited from rheumatology clinics, which may have contributed to spectrum bias since most patients with gout are seen in primary care settings. The systematic literature review of imaging was limited by the relative paucity of published data, and comparator diseases included were limited. Thus, Phase 2 was envisioned as a complementary phase that would incorporate the data derived in Phase 1 with clinical expertise to address a broader spectrum of clinical gout.

Approach to identifying domains and categories

In Phase 2, an international panel of expert rheumatologists and primary care physicians used a multicriteria decision analytic consensus methodology, informed by data generated in Phase 1, to determine the factors that best discriminated gout from other rheumatic diseases that could conceivably be considered in the differential diagnosis. Such an approach would lead to expert-derived, data-informed weighting of discriminating factors. The specific methods are described below.

Rheumatologists and general internists with an interest in gout submitted paper patient cases of patients for whom gout was in the differential diagnosis, using standardised data collection forms. A subset of 30 paper patient cases was selected to represent a broad spectrum of the probability of gout. Prior to

Figure 1 Flow chart of the study process. The major steps taken to develop the new American College of Rheumatology/European League Against Rheumatism criteria for classification of gout are outlined. SUGAR, Study for Updated Gout Classification Criteria.



the in-person expert panel meeting, panel members were given the data from Phase 1 to review, and they were asked to rank-order the 30 paper patient cases from lowest to highest probability of having gout.

At the in-person expert panel meeting, held over 2 days (9–10 June 2014 in Paris, France in advance of the EULAR Congress), three concepts were agreed upon a priori. First, the task was to develop criteria that would enable standardised assembly of a well defined, relatively homogeneous group of subjects representative of persons with gout, for entry into observational studies or clinical trials. Such criteria are not intended to capture *all* possible patients, but rather to capture the great majority of patients with shared key features of gout. Second, the classification was to apply to the patient's total disease experience, not to classify individual symptomatic episodes. Third, elements of the criteria could be accrued over time such that individuals could fulfil criteria at a later time point even if they did not at the initial assessment.

Review of the Phase 1 data and the paper patient case ranking exercise formed the basis for in-depth discussion to identify key features that were pertinent to the probability of gout. Based on these key features, initial formulation of potential criteria was developed, with consideration of entry, sufficient, and exclusion criteria and more precise definition of domains and their categories. Decisions regarding domains and their categories were supported, where possible, by Phase 1 data and/or any other available published evidence.

Approach to assigning relative weights to domains and categories

Once the Paris panel agreed upon preliminary domains and categories, the members undertook a discrete-choice conjoint analysis exercise guided by an experienced facilitator (RPN) and aided by a rheumatologist with experience in the process (TN), similar to that used for other classification criteria (eg, rheumatoid arthritis, systemic sclerosis).^{24–29} Specifically, we used a computer software program, 1000Minds (<http://www.1000minds.com>), which uses decision science theory and computer adaptive technology to carry out a series of discrete forced-choice experiments through pairwise ranking of alternatives that lead to quantified weights of each domain and each category within the domains.^{28–30} Briefly, the expert panel was presented with a series of paired scenarios, each of which contained the same two domains, but with different combinations of the domains' categories grouped together in each scenario. The panel was instructed to assume that all other parameters were equivalent between the two patients represented by the scenarios. The distribution of votes (per cent who voted for 'A,' 'B,' or 'equal probability') was presented for each pair of scenarios after each vote. Discussion occurred after each vote, with re-voting as necessary. Consensus was considered to have been achieved when all participants either indicated complete agreement as to which scenario represented a higher probability of gout, or indicated that they could accept the majority opinion.

Relative weights were derived with the decision-analytical software, based on the voting results of the discrete-choice scenarios and refined by each successive result. Upon completion of the voting exercise, the relative weights for each category and domain, and the face validity of the resulting rank order of 10 paper patient cases, were reviewed.

After the in-person meeting, minor scoring simplifications were incorporated and pretested in the SUGAR derivation data set (ie, the original two-thirds sample analysed in Phase 1). A cut-off score that maximised the sum of sensitivity and specificity was determined, to examine misclassification.

Approach to developing final criteria scoring

The raw weights from the scoring system were simplified into whole numbers, with performance characteristics assessed for each simplification.

Approach to defining criteria threshold for classifying gout

The original 30 paper patient cases (except for 3 with demonstrated MSU crystals), in addition to 20 subjects from the SUGAR study analysed in Phase 1 who had unique scores close to the cut-off score derived as described above, were used for a threshold identification exercise. For these 20 subjects, if synovial fluid microscopy had failed to show MSU crystals, this information was provided. Otherwise, the results of synovial fluid examination were recorded as 'not done.' This information was not made known to the expert panel. These cases were arranged according to their score in descending order. In an online exercise, the expert panel indicated whether they would classify the patient as having gout with sufficient confidence to feel comfortable enrolling that patient into a Phase 3 trial of a new urate-lowering agent.

Testing of the new gout classification criteria and comparison with existing published criteria

The final criteria set was evaluated in the SUGAR validation data set (ie, the one-third of the data set that had not been used for any analyses to date (n=330)); the purpose of this was to enable validation of the newly developed criteria in an independent data set. A secondary analysis was conducted to evaluate how the criteria would perform if only clinical parameters were available (ie, without MSU determination or imaging). The performance characteristics of the new criteria were compared with those of existing published criteria using logistic regression.

RESULTS

The expert panel (n=20) comprised 19 physicians with a clinical and/or research interest in gout (17 clinical rheumatologists and 2 primary care physicians) and an epidemiologist/biostatistician; 9 members of the panel were from USA, 8 from Europe, 2 from New Zealand and 1 from Mexico. One hundred and thirty-three paper cases were submitted by the expert panel and 79 clinical rheumatologists and general internists.

Based on review of the Phase 1 data and the ranking exercise with the 30 cases representing low to high probability of gout, initial key factors that were identified as being important for classifying gout were presence of MSU crystals, pattern of joint involvement, intensity of symptomatic episodes, time to maximal pain and to resolution, episodic nature of symptoms, presence of clinical tophus, level of serum urate, imaging features, response to treatment, family history, and risk factors or associated comorbidities. The last three factors were not considered further as they are not features of gout itself despite their association with gout, and inclusion of risk factors or comorbidities in the definition of gout would preclude future studies evaluating their association with gout.

Entry, sufficient and exclusion criteria

Before embarking upon defining domains and domain categories (the classification criteria), we defined entry, sufficient, and exclusion criteria. The entry criteria were intended to be used to identify the relevant patient population to whom the classification criteria would be applied. Sufficient criteria were intended to define features such as a gold standard that alone could classify gout without further need to apply the

Criteria

classification criteria scoring system. Exclusion criteria were intended to define individuals in whom gout could be ruled out (among those who met entry criteria) and to whom the classification criteria should not be further applied. The expert panel agreed that these classification criteria should be applicable only to people with symptomatic disease because the prognosis of asymptomatic disease is presently not well delineated in the literature, and to enable categorisation based on features of symptomatic episodes. The *entry criterion* was defined as the occurrence of at least one episode of swelling, pain, or tenderness in a peripheral joint or bursa. The *sufficient criterion* was defined as the presence of MSU crystals in a symptomatic joint or bursa (ie, in synovial fluid) or tophus as observed by a trained examiner. The panel agreed that there would be no exclusion criteria because gout can often coexist with other diseases and because synovial fluid microscopy can sometimes fail to disclose MSU crystals in patients with gout for technical, sampling or treatment reasons.

Domains and categories

Based on the key features identified initially, Phase 1 data, and available published literature, and with a defined population to whom the criteria would apply, the expert panel further developed the pertinent domains and their respective categories in an iterative process. The expert panel aimed to define relevant clinical and imaging parameters to be as specific as possible for gout.

The domains included clinical parameters (numbers 1–4), laboratory parameters (numbers 5 and 6) and imaging parameters (numbers 7 and 8). The specific domains and their respective definitions are summarised in [table 1](#). The domains were designed to be scored based on the totality of the subjects' symptomatic disease experience. All of the categories within domains are hierarchical and mutually exclusive, such that if a higher and a lower category have been fulfilled at different points in time, the higher one should be scored; the highest categories are listed last within each domain.

Table 1 Definitions and considerations for each domain*

Domain†	Definitions and special considerations
1. Pattern of joint/bursa involvement during symptomatic episode(s) ever Categories are defined as per the description of the distribution of joints involved	Distribution of joints: involvement (ever) of 1. Joint(s) or bursa(e) other than ankle, mid-foot or first metatarsophalangeal (MTP) joint (or their involvement only as part of a polyarticular presentation) 2. Ankle or mid-foot joint(s) as monoarticular or part of an oligoarticular presentation without first MTP joint involvement 3. MTP joint involvement as monoarticular or part of an oligoarticular presentation
2. Characteristics of symptomatic episode(s) ever Categories are defined as No characteristics present 1 characteristic present 2 characteristics present 3 characteristics present	Characteristics to consider: presence (ever) of 1. Great difficulty with walking or inability to use the affected joint(s) during a symptomatic episode ever (patient-reported) 2. Can't bear touch or pressure to the affected joint during a symptomatic episode ever (patient-reported) 3. Erythema overlying affected joint during a symptomatic episode ever (patient-reported or physician-observed)
3. Time course of symptomatic episode(s) ever Categories are defined as No typical episodes 1 typical episode Recurrent typical episodes	'Typical symptomatic episode': presence (ever) of >2 of the following, irrespective of anti-inflammatory treatment 1. Time to maximal pain <24 h 2. Resolution of symptoms in ≤14 days 3. Complete resolution (to baseline level) between symptomatic episodes
4. Clinical evidence of tophus Categories are defined as Present Absent	Appearance: draining or chalk-like subcutaneous nodule under transparent skin, often with overlying vascularity (figure 2) Location: classic locations—joints, ears, olecranon bursae, finger pads, tendons (eg, Achilles)
5. Serum urate level, off-treatment Categories are defined as <4 mg/dL (0.24 mmol/L) 4–<6 mg/dL (0.24–<0.36 mmol/L) 6–<8 mg/dL (0.36–<0.48 mmol/L) 8–<10 mg/dL (0.48–<0.60 mmol/L) ≥10 mg/dL (≥0.60 mmol/L)	Which serum urate measurement to use: highest reading on record, off urate-lowering therapy Special considerations: Ideally, the serum urate level should be scored if tested at a time when the patient was not receiving urate-lowering therapy and it was >4 weeks from the start of an episode; if practicable, retest under those conditions. If serum urate level is ≥10 mg/dL, no need to retest
6. Synovial fluid analysis Categories are defined as MSU negative Not done	Location: symptomatic (ever) joint or bursa Special considerations: assessment should be performed by a trained observer Note: MSU positive is a sufficient criterion.
7. Imaging evidence of urate deposition Categories are defined as Absent or not done Present (either modality)	Modality: ultrasound or DECT Appearance: double-contour sign on ultrasound (figure 3A)‡ or urate deposition on DECT (figure 3B)§ Location: symptomatic (ever) joint or bursa
8. Imaging evidence of gout-related joint damage Categories are defined as Absent or not done Present	Modality: radiography Appearance of gout-related erosion: cortical break with sclerotic margin and overhanging edge; excludes gull wing appearance (figure 3C) Location: radiograph of hands and/or feet; excludes distal interphalangeal joints

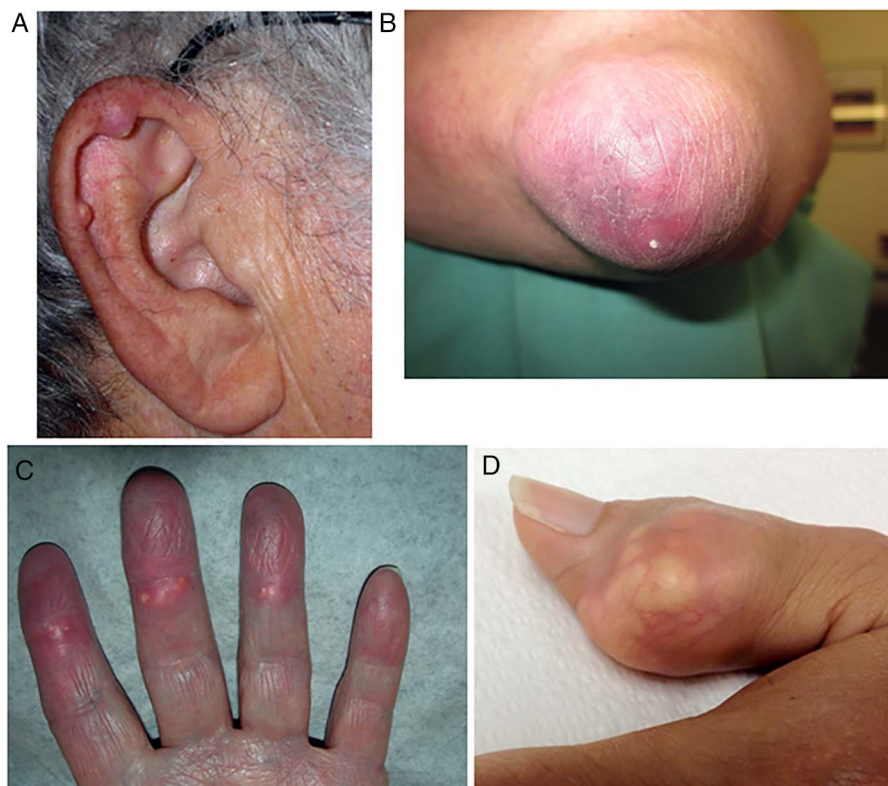
*Symptomatic (ever) refers to pain and/or swelling.

†Categories within each domain are hierarchical; if a subject fulfills more than 1 category, the highest category should be selected.

‡A false-positive double-contour sign (artifact) may appear at the cartilage surface, but should disappear with a change in the insonation angle of the probe.^{31 32}

§Images should be acquired using a dual-energy computed tomography (DECT) scanner, with data acquired at 80 kV and 140 kV and analysed using gout-specific software with a 2-material decomposition algorithm that color-codes urate.³³ A positive scan result is defined as the presence of color-coded urate at articular or periarticular sites. Nailbed, submillimeter, skin, motion, beam hardening, and vascular artifacts should not be interpreted as DECT evidence of urate deposition.³⁴

Figure 2 Examples of tophus. The tophus is defined as a draining or chalk-like subcutaneous nodule under transparent skin, often with overlying vascularity. Typical locations are the ear (A), the elbow (olecranon bursa) (B) and the finger pulps (C and D). Note the overlying vascularity in D.



Symptomatic episodes were defined as those in which there was swelling, pain, or tenderness in a peripheral joint or bursa. For the pattern of joint involvement, it was agreed that a first metatarsophalangeal joint ankle, or mid-foot involvement as part of a polyarticular presentation, though possible in gout, was not specific enough for gout since that pattern could be seen commonly in other disorders such as rheumatoid arthritis. The time course of symptomatic episodes was to be considered irrespective of anti-inflammatory treatment. For clinical tophus, a precise definition in terms of appearance and location was developed to assist in differentiation from other subcutaneous nodules that may be confused with tophi. Examples of clinically evident tophi are provided in [figure 2](#). Serum urate was considered a mandatory element of the classification criteria scoring system (ie, the score cannot be computed without a serum urate value). For the synovial fluid domain, the fluid must be aspirated from a symptomatic (ever) joint or bursa, and assessed by a trained observer. If the synovial fluid aspirate was MSU positive, the individual would have been classified as having gout under the sufficiency criterion without evaluating the rest of the classification criteria.

For imaging evidence of urate deposition, the imaging modalities with sufficient published data and investigator experience to support their utility in identifying urate deposition accurately were ultrasound and DECT. MRI and conventional CT did not have sufficient published data or investigator experience to support their consideration. For ultrasound evidence of urate deposition, the required finding is the double-contour sign (DCS), defined as hyperechoic irregular enhancement over the surface of the hyaline cartilage that is independent of the insonation angle of the ultrasound beam (note: a false positive DCS (artefact) may appear at the cartilage surface but should disappear with a change in the insonation angle of the probe).^{31 32} Examples of gout-related DCS are provided in [figure 3](#). For DECT, urate deposition is defined as the presence of colour-

coded urate at articular or periarticular sites ([figure 3](#)). Images should be acquired using a DECT scanner, with data acquired at 80 kV and 140 kV and analysed using gout-specific software with a two-material decomposition algorithm that colour-codes urate.³³ A positive scan result is defined as the presence of colour-coded urate at articular or periarticular sites. Nail-bed, submillimetre size, skin, motion, beam hardening and vascular artefacts should not be interpreted as DECT evidence of urate deposition.³⁴ The scoring of this imaging domain is applicable only to a symptomatic (ever) joint or bursa (ie, swelling, pain or tenderness), and is scored as present on either modality, or absent/not done (ie, neither modality was performed). That is, if either imaging modality demonstrates the required finding, then urate deposition is considered to be present.

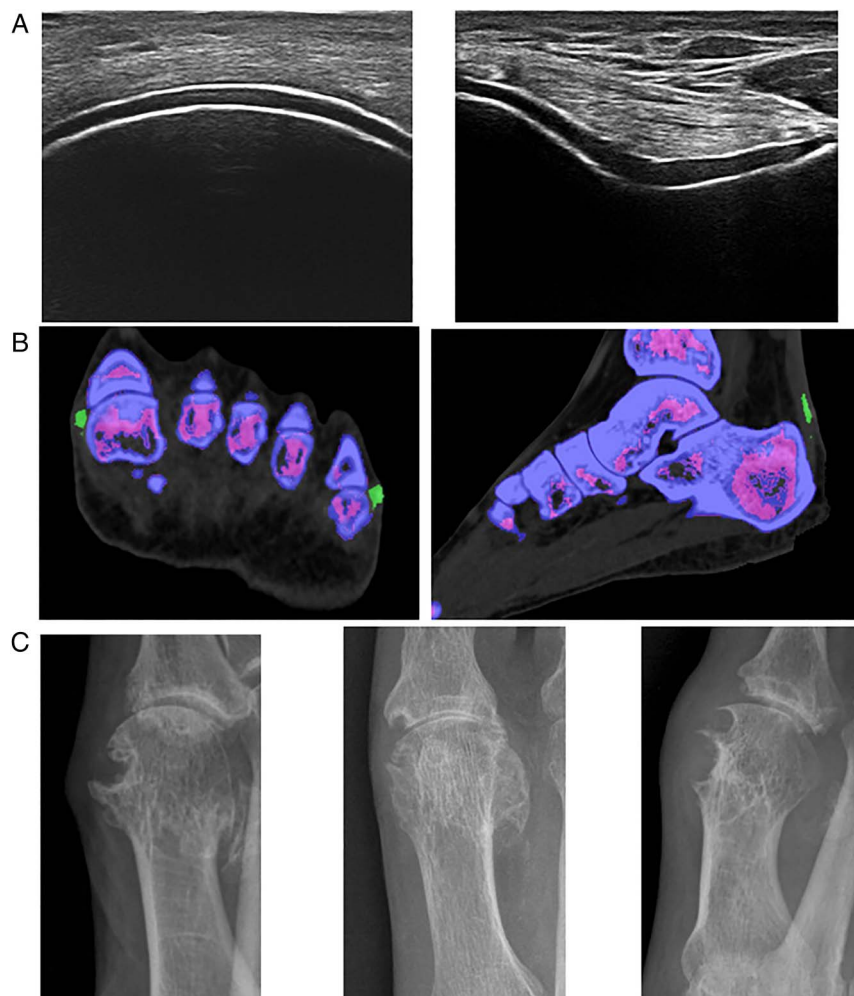
Finally, imaging evidence of gout-related joint damage is to be scored on the basis of conventional radiography of the hands and/or feet demonstrating at least one gout-related erosion, which is defined as a cortical break with sclerotic margin and overhanging edge ([figure 3](#)). The distal interphalangeal joints and gull wing appearance should be excluded from this evaluation since they can occur in osteoarthritis.

Assigning relative weights to domains and categories

Once the domains and categories were defined, the expert panel undertook a series of discrete-choice experiments. This work resulted in weights being assigned to each category and domain, such that the highest category of each domain summed to a total of 100%. Any necessary revisions to the categories were made with subsequent repetition of the discrete-choice experiments after any such changes.

A sample of 10 paper patient cases (from among the original 30 paper cases) was scored and rank-ordered with this preliminary scoring system. The cases were accurately ranked with reference to the expert panel's premeeting rankings, lending face validity to this preliminary scoring system. The scoring was also

Figure 3 Examples of imaging features included in the classification criteria. (A) Double-contour sign seen on ultrasonography. Left panel shows a longitudinal ultrasound image of the femoral articular cartilage; right panel shows a transverse ultrasound image of the femoral articular cartilage. Both images show hyperechoic enhancement over the surface of the hyaline cartilage (images kindly provided by Dr Esperanza Naredo, Hospital Universitario Gregorio Marañón, Madrid, Spain). (B) Urate deposition seen on dual-energy CT. Left panel shows urate deposition at the first and fifth metatarsophalangeal joints; right panel shows urate deposition within the Achilles tendon. (C) Erosion, defined as a cortical break with sclerotic margin and overhanging edge, seen on conventional radiography of the first metatarsophalangeal joint.



repeated without the imaging domains, which resulted in little change in the rank-ordering. Correlation between premeeting mean ranking and the initial scoring system ranking was high ($r^2=0.71$).

Defining criteria threshold for classifying gout

Using a cut-off score that maximised the sum of sensitivity and specificity from the SUGAR data, the percentage of false negatives and false positives was 13.9% and 10.5%, respectively. Next, the expert panel performed a threshold identification exercise designed to assess the members' willingness to enrol 47 paper cases, based on having sufficient confidence that the individual has gout, into a Phase 3 randomised clinical trial of a new urate-lowering agent with unclear efficacy and safety. The score at which the majority considered an individual as having gout or not fell at the same threshold as that identified as the cut-off score that maximised the sum of sensitivity and specificity.

Final criteria scoring

With face validity of the initial scoring system confirmed and a threshold identified, the raw relative weights of the domain categories and the threshold score were rescaled and rounded into whole numbers to make the scoring system as simple as possible, while retaining the relative weighting produced by the expert panel. The maximum possible score in the final criteria is 23. A threshold score of ≥ 8 classifies an individual as having gout.

A unique aspect of the new classification criteria is that there are two categories that elicit *negative* scores. Specifically, if the synovial fluid is MSU negative, 2 points are subtracted from the total score. Similarly, if the serum urate level is <4 mg/dL (<0.24 mmol/L), 4 points are subtracted from the total score. This approach was taken to emphasise that these findings reduce the probability of gout. The lowest category in each domain has a score of 0 and is therefore not explicitly depicted in the final criteria table; however, for serum urate level, the category that receives a score of 0 is $4-<6$ mg/dL ($0.24-<0.36$ mmol/L). If imaging is not performed, those categories are also scored as 0. The final criteria are presented in table 2. A web-based calculator can be accessed at <http://goutclassificationcalculator.auckland.ac.nz>, as well as through the ACR and EULAR websites.

Results of testing of the new gout classification criteria and comparison with existing published criteria

In the SUGAR validation data set ($n=330$), the sensitivity of the new classification criteria was 0.92, and specificity was 0.89 (table 3). The performance of the criteria was also tested using only clinical parameters, that is, without MSU results, scored as 0 (unknown/not done) and without imaging (ie, radiographic, ultrasound or DECT imaging) results, scored as 0; this latter scoring was in keeping with similar weighting being given to imaging studies that were negative versus not being performed in the discrete-choice experiments. In this setting, the sensitivity and specificity were 0.85 and 0.78.

Table 2 The ACR/EULAR gout classification criteria*

	Categories	Score
Step 1: Entry criterion (only apply criteria below to those meeting this entry criterion)	At least 1 episode of swelling, pain, or tenderness in a peripheral joint or bursa	
Step 2: Sufficient criterion (if met, can classify as gout without applying criteria below)	Presence of MSU crystals in a symptomatic joint or bursa (ie, in synovial fluid) or tophus	
Step 3: Criteria (to be used if sufficient criterion not met)		
Clinical		
Pattern of joint/bursa involvement during symptomatic episode(s) ever	Ankle or mid-foot (as part of monoarticular or oligoarticular episode without involvement of the first metatarsophalangeal joint)	1
	Involvement of the first metatarsophalangeal joint (as part of monoarticular or oligoarticular episode)	2
Characteristics of symptomatic episode(s) ever		
▶ Erythema overlying affected joint (patient-reported or physician-observed)	One characteristic	1
▶ Can't bear touch or pressure to affected joint	Two characteristics	2
▶ Great difficulty with walking or inability to use affected joint	Three characteristics	3
Time course of episode(s) ever		
Presence (ever) of ≥ 2 , irrespective of anti-inflammatory treatment:		
▶ Time to maximal pain < 24 h	One typical episode	1
▶ Resolution of symptoms in ≤ 14 days	Recurrent typical episodes	2
▶ Complete resolution (to baseline level) between symptomatic episodes		
Clinical evidence of tophus		
Draining or chalk-like subcutaneous nodule under transparent skin, often with overlying vascularity, located in typical locations: joints, ears, olecranon bursa, finger pads, tendons (eg, Achilles)	Present	4
Laboratory		
Serum urate: Measured by the uricase method.		
Ideally should be scored at a time when the patient was not receiving urate-lowering treatment and it was > 4 weeks from the start of an episode (ie, during the intercritical period); if practicable, retest under those conditions. The highest value irrespective of timing should be scored	< 4 mg/dL (< 0.24 mmol/L) [†]	-4
	$6 - < 8$ mg/dL ($0.36 - < 0.48$ mmol/L)	2
	$8 - < 10$ mg/dL ($0.48 - < 0.60$ mmol/L)	3
	≥ 10 mg/dL (≥ 0.60 mmol/L)	4
Synovial fluid analysis of a symptomatic (ever) joint or bursa (should be assessed by a trained observer) [‡]	MSU negative	-2
Imaging[§]		
Imaging evidence of urate deposition in symptomatic (ever) joint or bursa: ultrasound evidence of double-contour sign [¶] or DECT demonstrating urate deposition ^{**}	Present (either modality)	4
Imaging evidence of gout-related joint damage: conventional radiography of the hands and/or feet demonstrates at least 1 erosion ^{††}	Present	4

*A web-based calculator can be accessed at: <http://goutclassificationcalculator.auckland.ac.nz>, and through the American College of Rheumatology (ACR) and European League Against Rheumatism (EULAR) web sites.

[†]Symptomatic episodes are periods of symptoms that include any swelling, pain, and/or tenderness in a peripheral joint or bursa.

[‡]If serum urate level is < 4 mg/dL (< 0.24 mmol/L), subtract 4 points; if serum urate level is ≥ 4 mg/dL ($\geq 0.24 - < 0.36$ mmol/L), score this item as 0.

[§]If polarizing microscopy of synovial fluid from a symptomatic (ever) joint or bursa by a trained examiner fails to show monosodium urate monohydrate (MSU) crystals, subtract 2 points.

If synovial fluid was not assessed, score this item as 0.

[¶]If imaging is not available, score these items as 0.

^{**}Hyperechoic irregular enhancement over the surface of the hyaline cartilage that is independent of the insonation angle of the ultrasound beam (note: false-positive double-contour sign [artifact] may appear at the cartilage surface but should disappear with a change in the insonation angle of the probe).^{31 32}

^{**}Presence of color-coded urate at articular or periarticular sites. Images should be acquired using a dual-energy computed tomography (DECT) scanner, with data acquired at 80 kV and 140 kV and analyzed using gout-specific software with a 2-material decomposition algorithm that color-codes urate.³³ A positive scan is defined as the presence of color-coded urate at articular or periarticular sites. Nailbed, submillimeter, skin, motion, beam hardening, and vascular artifacts should not be interpreted as DECT evidence of urate deposition.³⁴

^{††}Erosion is defined as a cortical break with sclerotic margin and overhanging edge, excluding distal interphalangeal joints and gull wing appearance.

When compared with existing published criteria (using their respective published thresholds), the new classification criteria performed well. For some existing criteria sets, presence of MSU crystals alone is sufficient to fulfil criteria; they are therefore 100% sensitive by definition. The new gout classification criteria also have MSU positivity as sufficient criterion for classification, but the criteria set was not assessed in that regard, to avoid circularity. When the new classification criteria set was compared in its complete form (ie, incorporating imaging and MSU data) with other published 'full' criteria, some existing criteria had higher sensitivity, but all had lower specificity (table 3). Additionally, for the clinical parameters-only version of the new criteria, the sensitivity was better than that of all but one of the other clinical-only criteria sets, and the specificity was similar or better. The new gout classification criteria

therefore performed well in the 'full' form and the 'clinical-only' form.

DISCUSSION

The new ACR/EULAR gout classification criteria represent an international collaborative effort that incorporates the latest published evidence on imaging modalities, a data-driven approach with MSU identification as a gold standard to reference key features, and a decision analytic approach to inform the weighting of the scoring system. This classification criteria set will enable a standardised approach to identifying a relatively homogeneous group of individuals who have the clinical entity of gout for enrolment into studies. The criteria permit characterisation of an individual as having gout regardless of whether he or she is currently experiencing an acute symptomatic

Criteria

Table 3 Performance of the gout classification criteria in the Study for Updated Gout Classification Criteria validation data set, in comparison with existing published criteria

Criteria set (ref.)	Area under the curve*	Sensitivity at published threshold	Specificity at published threshold
ACR/EULAR criteria	0.95	0.92	0.89
ACR/EULAR criteria (clinical-only)†	0.89	0.85	0.78
ACR 1977 criteria (full) ¹⁰	0.83	1.00‡	0.51‡
ACR 1977 (survey) ¹⁰	0.83	0.84‡	0.62‡
Rome ¹³	0.95	0.97	0.78‡
Rome (clinical) ¹³	NA	0.77‡	0.78‡
New York ¹⁴	0.83	1.00‡	0.78‡
New York (clinical) ¹⁴	NA	0.79‡	0.78‡
Mexico ¹²	0.84	1.00‡	0.44‡
Mexico (clinical) ¹²	NA	0.95	0.44‡
Netherlands ¹¹ §	0.87	0.95	0.59‡

*Based on the sum of the number of items present, or the total score in the case of weighted criteria (ACR/ EULAR criteria and Netherlands criteria).

†Without synovial fluid microscopy or imaging.

‡p<0.05 versus the ACR/EULAR criteria.

§The Netherlands criteria set was intended as a diagnostic aid, and has two possible cut-offs (see online supplementary table S1); we used the higher cut-off for these analyses because such a score is deemed to suggest gout.

ACR/EULAR, American College of Rheumatology/European League Against Rheumatism; NA, not applicable.

episode and regardless of any comorbidities. The new classification criteria have superior performance characteristics, with high sensitivity and improved specificity compared with previously published criteria. Arguably, specificity (leading to high positive predictive value) is of critical importance in most clinical studies since investigators need to have confidence that individuals who are enrolled in a study truly have the condition of interest.

Gout is unlike other rheumatic diseases in that a gold standard assessment is available, that is, MSU crystal positivity. While this gold standard has high specificity, its feasibility and sensitivity may be inadequate, because of difficulty with aspiration of joints (particularly small ones) and/or examination of the sample under polarising microscopy. Thus, although MSU crystal results are extremely helpful when positive, they are not a feasible universal standard, particularly because many potential study subjects are likely to be recruited from non-rheumatology settings. We aimed to develop a new set of criteria that could be flexible enough to enable accurate classification of gout regardless of MSU status; a clinical-only version can be considered for use in settings in which synovial fluid or tophus aspiration is not feasible. Nonetheless, in recognition of its gold standard status, the expert panel set the presence of MSU crystal positivity in a symptomatic joint or bursa as sufficient for classifying an individual as having gout. It should be recognised that classification criteria are not intended for use in making a diagnosis in a clinical setting.³⁵ Thus, in clinical practice, joint or tophus aspiration remains an essential component of establishing a diagnosis of gout.

As with most diseases, there is a gradient of probability of truly having the disease based on signs and symptoms. The threshold chosen for this classification criteria set yielded the best combination of sensitivity and specificity. While for certain purposes a higher sensitivity (lower score) may be preferable (eg, general population survey to determine the public health burden of gout for resource planning), a higher specificity

(higher score) may be desirable for others (eg, genetic association studies in which accurate phenotyping is critical). Furthermore, classification criteria are not intended to characterise the severity of disease, but only its presence. Additionally, classification criteria should be applied only to the intended population—those who meet the entry criteria. Performance characteristics of any classification criteria set will necessarily be altered if the criteria are applied to those other than the intended population.

A limitation of our current effort is that there is still a relative paucity of data and of clinical experience to fully test advanced imaging data empirically. As more studies are published, there may be additional imaging signs and/or modalities found to have sufficient specificity for gout that could be incorporated into future criteria. We also realised that some investigators may not have access to imaging and therefore aimed to develop criteria that would still perform well in the absence of imaging data. In the discrete-choice experiments, the lack of imaging data was weighted the same as for studies performed with negative results, supporting the validity of using the scoring system in the absence of imaging data. We did not address asymptomatic hyperuricaemia, since the purpose of classification criteria is to identify individuals with a clinical entity for clinical studies. There is certainly an interest in studying asymptomatic hyperuricaemia, but this was beyond the scope of the current activity; the expert panel agreed that its charge was to classify individuals with symptomatic disease as evidence of a clinical condition. The present criteria set represents an attempt to optimise sensitivity and specificity for enrolment into trials and prospective epidemiological studies. Further testing of the criteria in additional samples, particularly in settings from which individuals with gout are likely to be recruited (eg, primary care), and other study types, is warranted.

This study provides a number of insights relating to the likelihood of gout. First, the clinical picture of gout as an episodic disease with stereotypical features and a predilection for lower-extremity joints, particularly the first metatarsophalangeal joint, was captured in the SUGAR study, despite concerns that the study design might lead to selection bias. Second, there were certain conditions that strongly reduced the likelihood of gout: synovial fluid from a symptomatic joint or bursa that was negative for MSU crystals, and a serum urate level of <4 mg/dL (0.24 mmol/L). While such findings would not necessarily rule out gout, they were weighted in the discrete-choice experiments such that they lower the probability of gout. Third, the SUGAR subjects and the paper patient cases were derived from a large international pool, supporting generalisability of these criteria. Finally, advanced imaging modalities have been incorporated into classification criteria for gout for the first time.

In summary, the 2015 ACR/EULAR classification criteria for gout represent an advance over previous criteria, with improved performance characteristics and incorporation of newer imaging modalities. These criteria may be considered as inclusion criteria for future studies of clinical gout.

Author affiliations

¹Boston University School of Medicine, Boston, Massachusetts, USA

²Vecuri Medical Center, Venlo, The Netherlands

³Radboud University Medical Center, Nijmegen, The Netherlands

⁴University of Auckland, Auckland, New Zealand

⁵University of Pennsylvania, Philadelphia, Pennsylvania, USA

⁶University of Otago, Wellington, New Zealand

⁷University of Florida, Gainesville, Florida, USA

⁸INSERM UMR 1132, Hôpital Lariboisière, AP-HP, and Université Paris Diderot, Sorbonne Paris Cité, Paris, France

⁹McMaster University Medical Centre, Hamilton, Ontario, Canada

¹⁰University of Edinburgh, Edinburgh, UK

¹¹Hospital Universitario Cruces and BioCruces Health Research Institute, Vizcaya, Spain

¹²University of Alabama at Birmingham, Birmingham, Alabama, USA

¹³Birmingham VA Medical Center and University of Alabama at Birmingham, and Mayo Clinic College of Medicine, Rochester, Minnesota, USA

¹⁴Duke University and Duke University Medical Center, Durham, North Carolina, USA

¹⁵Gilead Sciences, Foster City, California, USA

¹⁶University Hospital Carl Gustav Carus, Dresden, Germany

¹⁷Hospital General de Mexico, Mexico City, Mexico

¹⁸University of Michigan Health System, Chelsea

Acknowledgements The authors are grateful to the following investigators for contributing additional paper patient cases: Drs Everardo Alvarez Hernandez, Ruben Burgos, Geraldo Castelar, Marco Cimmino, Tony Dowell, Angelo Gaffo, Rebecca Grainger, Leslie Harrold, Phillip Helliwell, Changtsai Lin, Worawit Louthrenoo, Claudia Schainberg, Naomi Schlesinger, Carlos Scire, Ole Slot, Lisa Stamp, Robert Terkeltaub, Harald Vonkeman, Zeng Xuejun. The authors thank Dr Thomas Bardin for participating in ranking of the paper cases. The authors thank Dr Esperanza Naredo for her advice regarding standardisation of the ultrasound definition of double-contour sign. The authors also thank the following additional investigators who collected data for the SUGAR study: Drs Lorenzo Cavagna, Jiunn-Hong Chen, Yi-Hsing Chen, Yin-Yi Chou, Hang-Kong Ea, Maxim Eliseev, Martijn Gerritsen, Matthijs Janssen, Juris Lazovskis, Geraldine McCarthy, Francisca Sivera, Ana Beatriz Vargas-Santos, Till Uhlig, Douglas White, and all of the authors of the SUGAR study (full list in ref. ²¹). The authors thank Ian Sayer (Application Specialist, Information Services, Faculty of Medical and Health Sciences, University of Auckland, Auckland, New Zealand) for his work on developing the gout classification calculator web page.

Contributors All authors were involved in drafting the article or revising it critically for important intellectual content, and all authors approved the final version to be published. TN had full access to all of the data in the study and takes responsibility for the integrity of the data and the accuracy of the data analysis. Study conception and design: TN, TLTAJ, ND, JF, HRS, WJT. All authors were involved in the acquisition, analysis and interpretation of data.

Funding Supported jointly by the American College of Rheumatology and the European League Against Rheumatism. TN's work was supported by the NIH (grants P60-AR-47785 and K23-AR-055127). JAS' work was supported by the NIH (grants from the National Institute of Arthritis and Musculoskeletal and Skin Diseases, the National Institute on Aging, and the National Cancer Institute) and the Agency for Healthcare Research and Quality (Center for Education and Research on Therapeutics programme). WJT's work was supported by Arthritis New Zealand.

Competing interests TLTAJ has received consulting fees, speaking fees and/or honoraria from AbbVie, Bristol-Myers Squibb, Roche, Janssen, Novartis and Menarini (less than \$10 000 each). ND has received consulting fees, speaking fees, and/or honoraria from Takeda, Teijin, Menarini, Pfizer and Fonterra (less than \$10 000 each) and AstraZeneca/Ardea (more than \$10 000); she holds a patent for Fonterra milk products for gout. HRS has received consulting fees from Novartis, Regeneron, AstraZeneca and Metabolex (less than \$10 000 each). HC has received consulting fees, speaking fees and/or honoraria from AstraZeneca (less than \$10 000) and Takeda (more than \$10 000). NLE has received consulting fees, speaking fees and/or honoraria from AstraZeneca, Crelta, CymaBay and Takeda (less than \$10 000 each). FL has received consulting fees, speaking fees and/or honoraria from Novartis, Ardea, AstraZeneca, Ipsen, Menarini and Savient (less than \$10 000 each) and unrestricted academic grants from Novartis, AstraZeneca, Ipsen, Menarini, Savient and Mayoly-Spindler. FP-R has received consulting fees, speaking fees and/or honoraria from AstraZeneca, Menarini, Pfizer and CymaBay (less than \$10 000 each). KS has received consulting fees, speaking fees and/or honoraria from Amgen, AstraZeneca/Ardea, Crelta and Takeda (less than \$10 000 each). JAS has received consulting fees, speaking fees and/or honoraria from Regeneron, Allergan and Savient (less than \$10 000 each) and Takeda (more than \$10 000), and research grants from Savient and Takeda. JSS has received consulting fees from Merck, Lilly, AstraZeneca, Metabolex, Novartis and Navigant (less than \$10 000 each). A-KT has received consulting fees, speaking fees and/or honoraria from Berlin-Chemie Menarini (less than \$10 000) and has served as an expert witness on behalf of Ardea Biosciences/AstraZeneca and Novartis. WJT has received consulting fees, speaking fees and/or honoraria from Pfizer, AstraZeneca, AbbVie and Roche (less than \$10 000 each).

Provenance and peer review Not commissioned; externally peer reviewed.

Open Access This is an Open Access article distributed in accordance with the Creative Commons Attribution Non Commercial (CC BY-NC 4.0) license, which permits others to distribute, remix, adapt, build upon this work non-commercially, and license their derivative works on different terms, provided the original work is properly cited and the use is non-commercial. See: <http://creativecommons.org/licenses/by-nc/4.0/>

REFERENCES

- Zhu Y, Pandya BJ, Choi HK. Prevalence of gout and hyperuricemia in the US general population: the National Health and Nutrition Examination Survey 2007–2008. *Arthritis Rheum* 2011;63:3136–41.
- Richette P, Clerson P, Bouee S, et al. Identification of patients with gout: elaboration of a questionnaire for epidemiological studies. *Ann Rheum Dis* 2015;74:1684–90.
- Bardin T, Bouee S, Clerson P, et al. Prevalence of gout in the adult population of France in 2013 [abstract]. *Ann Rheum Dis* 2014;73:787–8.
- Annemans L, Spaepen E, Gaskin M, et al. Gout in the UK and Germany: prevalence, comorbidities and management in general practice 2000–2005. *Ann Rheum Dis* 2008;67:960–6.
- Kuo CF, Grainger MJ, Mallen C, et al. Rising burden of gout in the UK but continuing suboptimal management: a nationwide population study. *Ann Rheum Dis* 2015;74:661–7.
- Mikuls TR, Farrar JT, Bilker WB, et al. Gout epidemiology: results from the UK General Practice Research Database, 1990–1999. *Ann Rheum Dis* 2005;64:267–72.
- Winnard D, Wright C, Jackson G, et al. Gout, diabetes and cardiovascular disease in the Aotearoa New Zealand adult population: co-prevalence and implications for clinical practice. *N Z Med J* 2013;126:53–64.
- Neogi T. Gout. *N Engl J Med* 2011;364:443–52.
- Johnson SR, Goek ON, Singh-Grewal D, et al. Classification criteria in rheumatic diseases: a review of methodologic properties. *Arthritis Rheum* 2007;57:1119–33.
- Wallace SL, Robinson H, Masi AT, et al. Preliminary criteria for the classification of the acute arthritis of primary gout. *Arthritis Rheum* 1977;20:895–900.
- Janssens HJ, Fransen J, van de Lisdonk EH, et al. A diagnostic rule for acute gouty arthritis in primary care without joint fluid analysis. *Arch Intern Med* 2010;170:1120–6.
- Pelaez-Ballestas I, Hernandez Cuevas C, Burgos-Vargas R, et al. Diagnosis of chronic gout: evaluating the American College of Rheumatology proposal, European League Against Rheumatism recommendations, and clinical judgment. *J Rheumatol* 2010;37:1743–8.
- Kellgren JH, Jeffrey MR, Ball J. *The epidemiology of chronic rheumatism*. Vol. 1. Oxford: Blackwell Scientific, 1963:326–7.
- Decker JL. Report from the subcommittee on diagnostic criteria for gout. In: Bennett PH, Wood PH, eds. *Proceedings from the Third International Symposium; 1966 June 5–10; New York, New York*. Amsterdam: Excerpta Medica Foundation, 1968:385–7.
- Taylor WJ, Fransen J, Dalbeth N, et al. Performance of classification criteria for gout in early and established disease. *Ann Rheum Dis* 2014. Published Online First: 28 Oct 2014. doi:10.1136/annrheumdis-2014-206364.
- Malik A, Schumacher HR, Dinnella JE, et al. Clinical diagnostic criteria for gout: comparison with the gold standard of synovial fluid crystal analysis. *J Clin Rheumatol* 2009;15:22–4.
- Harrold LR, Mazor KM, Negron A, et al. Primary care providers' knowledge, beliefs and treatment practices for gout: results of a physician questionnaire. *Rheumatology (Oxford)* 2013;52:1623–9.
- Pal B, Foxall M, Dysart T, et al. How is gout managed in primary care? A review of current practice and proposed guidelines. *Clin Rheumatol* 2000;19:21–5.
- Dalbeth N, Fransen J, Jansen TL, et al. New classification criteria for gout: a framework for progress. *Rheumatology (Oxford)* 2013;52:1748–53.
- Prowse RL, Dalbeth N, Kavanaugh A, et al. A Delphi exercise to identify characteristic features of gout—opinions from patients and physicians, the first stage in developing new classification criteria [published erratum appears in J Rheumatol 2013;40:1634]. *J Rheumatol* 2013;40:498–505.
- Taylor W, Fransen J, Jansen TL, et al. Study for Updated Gout Classification Criteria (SUGAR): identification of features to classify gout. *Arthritis Care Res (Hoboken)* 2015. Published Online First 16 Mar 2015.
- Berendsen D, Jansen TL, Taylor W, et al. A critical appraisal of the competence of crystal identification by rheumatologists [abstract]. *Ann Rheum Dis* 2013;72(Suppl 3):A981–2.
- Ogdie A, Taylor WJ, Weatherall M, et al. Imaging modalities for the classification of gout: systematic literature review and meta-analysis. *Ann Rheum Dis* 2015;74:1868–74.
- Aletaha D, Neogi T, Silman AJ, III, et al. 2010 rheumatoid arthritis classification criteria: an American College of Rheumatology/European League Against Rheumatism collaborative initiative. *Arthritis Rheum* 2010;62:2569–81.
- Aletaha D, Neogi T, Silman AJ, III, et al. 2010 rheumatoid arthritis classification criteria: an American College of Rheumatology/European League Against Rheumatism collaborative initiative. *Ann Rheum Dis* 2010;69:1580–8.
- Van den Hoogen F, Khanna D, Fransen J, et al. 2013 classification criteria for systemic sclerosis: an American College of Rheumatology/European League against Rheumatism collaborative initiative. *Arthritis Rheum* 2013;65:2737–47.
- Van den Hoogen F, Khanna D, Fransen J, et al. 2013 classification criteria for systemic sclerosis: an American college of rheumatology/European league against rheumatism collaborative initiative. *Ann Rheum Dis* 2013;72:1747–55.

- 28 Neogi T, Aletaha D, Silman AJ, *et al.* The 2010 American College of Rheumatology/European League Against Rheumatism classification criteria for rheumatoid arthritis: phase 2 methodological report. *Arthritis Rheum* 2010;62:2582–91.
- 29 Johnson SR, Naden RP, Fransen J, *et al.* Multicriteria decision analysis methods with 1000Minds for developing systemic sclerosis classification criteria. *J Clin Epidemiol* 2014;67:706–14.
- 30 Hansen P, Ombrer F. A new method for scoring additive multi-attribute value models using pairwise rankings of alternatives. *J Multi-Crit Decis Anal* 2008;15:87–107.
- 31 Filippucci E, Di Geso L, Grassi W. Tips and tricks to recognize microcrystalline arthritis. *Rheumatology (Oxford)* 2012;51(Suppl 7):vii18–21.
- 32 Naredo E, Uson J, Jimenez-Palop M, *et al.* Ultrasound-detected musculoskeletal urate crystal deposition: which joints and what findings should be assessed for diagnosing gout? *Ann Rheum Dis* 2014;73:1522–8.
- 33 Glazebrook KN, Guimaraes LS, Murthy NS, *et al.* Identification of intraarticular and periarticular uric acid crystals with dual-energy CT: initial evaluation. *Radiology* 2011;261:516–24.
- 34 Mallinson PI, Coupal T, Reisinger C, *et al.* Artifacts in dual-energy CT gout protocol: a review of 50 suspected cases with an artifact identification guide. *AJR Am J Roentgenol* 2014;203:W103–9.
- 35 Aggarwal R, Ringold S, Khanna D, *et al.* Distinctions between diagnostic and classification criteria? *Arthritis Care Res (Hoboken)* 2015;67:891–7.

Correction

Neogi T, Jansen TLTA, Dalbeth N, *et al.* 2015 Gout classification criteria: an American College of Rheumatology/European League Against Rheumatism collaborative initiative. *Ann Rheum Dis* 2015;**74**:1789–98. The name of the 20th author was misspelled. The correct spelling is Janitzia Vazquez-Mellado. We regret the error.



CrossMark

Ann Rheum Dis 2016;**75**:473. doi:10.1136/annrheumdis-2015-208237corr1

Supplementary Table 1. Previously published classification criteria for gout (chronological order)

Rome (12)

1. Serum uric acid >7mg/dl (male) or >6mg/dl (female)
2. Presence of tophi
3. MSU crystals in synovial fluid or tissue
4. History of attacks of painful joint swelling with abrupt onset and resolution within two weeks

TWO OR MORE criteria required

New York (13)

1. At least two attacks of painful joint swelling with complete resolution within two weeks
2. A history or observation of podagra
3. Presence of tophi
4. Rapid response to colchicine treatment, defined as a major reduction in the objective signs of inflammation within 48 hours

***TWO OR MORE criteria required
OR MSU crystals in synovial fluid or tissue***

ACR (9) (full) (1977)

1. More than one attack of acute arthritis
2. Maximum inflammation developed within one day
3. Monoarthritis attack
4. Redness observed over joints
5. First metatarsophalangeal joint painful or swollen
6. Unilateral first metatarsophalangeal joint attack
7. Unilateral tarsal joint attack
8. Tophus (suspected or proven)
9. Hyperuricemia
10. Asymmetric swelling within a joint on x-ray
11. Subcortical cysts without erosions on xray
12. Joint fluid negative for organisms during attack

SIX OR MORE criteria required
OR MSU crystals in joint fluid or tophus

ACR (9) (survey) (1977)

1. More than one attack of acute arthritis
2. Maximum inflammation developed within one day
3. Oligoarthritis attack
4. Redness observed over joints
5. First metatarsophalangeal joint painful or swollen
6. Unilateral first metatarsophalangeal joint attack
7. Unilateral tarsal joint attack
8. Tophus (suspected or proven)
9. Hyperuricemia
10. Asymmetric swelling within a joint on x-ray
11. Complete termination of an attack

SIX OR MORE criteria required

Mexico (11)

1. More than 1 attack of arthritis
2. Rapid onset of pain and swelling (less than 24 hours)
3. Mono and/or oligo-articular attacks
4. Podagra
5. Joint erythema
6. Unilateral tarsal joint attack
7. Tophus (suspected or proven)
8. Hyperuricemia (more than 2 SD greater than the normal population average)

FOUR OR MORE criteria required
OR MSU crystal identification

Netherlands (10)

- 2 Male sex

2 Previous patient reported arthritis attack

0.5 Onset within one day

1 Joint redness

2.5 MTP1 involvement

1.5 Hypertension or more than 1 cardiovascular disease

3.5 Serum uric acid level > 5.88 mg/dL

13 Presence of a tophus

Each item contributes its weighted score as shown. A summed score of 4 or less excludes gout; 8 or more suggests gout; between 4 and 8 suggests need for synovial fluid analysis.

EULAR and ACR rewrite joint classifications for gout

Updated classification to include imaging techniques in the diagnosis of gout may help to standardise care.

INTRODUCTION

Gout is a very common condition. The symptoms tend to flare every so often, developing over a few hours and causing severe pain in the joints. It is caused by deposits of crystals of a substance called uric acid (urate) in the joints, which leads to inflammation.

Classification criteria help doctors to diagnose conditions and treat them in a standard way and are particularly important for planning clinical trials for new treatments.

WHAT DID THE AUTHORS HOPE TO FIND?

The existing classification criteria for gout were developed before modern imaging techniques such as ultrasound were available to look for uric acid crystals. The authors wanted to see if they could work out what features of gout are best to distinguish it from other similar conditions in order to update the classification and help doctors to diagnose gout more easily.

WHO WAS STUDIED?

The study included case studies of 30 people with diagnosed gout, confirmed by the presence of uric acid crystals in their joints or skin nodules, and people without uric acid crystals, but with symptoms similar to gout.

HOW WAS THE STUDY CONDUCTED?

The study had several parts. To begin with the authors asked doctors who were familiar with gout what features they thought were important to distinguish gout from other conditions. Then 938 consecutive patients with gout-like symptoms from 16 clinics were identified and split into two groups, depending on whether they had deposits of uric acid crystals or not.

The authors then reviewed the published medical literature to understand the accuracy of imaging techniques such as ultrasound and compared case studies of 30 patients with and without 'crystal-proven' gout to determine which features best distinguish gout from other conditions that are similar to gout. Finally, all the information was summarised to give a way of classifying gout.

WHAT WERE THE MAIN FINDINGS OF THE STUDY?

The authors identified ways to distinguish gout from other conditions that may be similar to gout. These include patient symptoms, physical examination findings, serum uric acid levels, joint fluid analysis, X-ray and imaging. In addition, the classification criteria that have been developed can be used even if joint fluid or imaging information is not available.

To be suspected of having gout, a person must have had at least one episode of swelling, pain or tenderness in a peripheral joint. The diagnosis is confirmed if there are uric acid crystal deposits in a painful joint, or white deposits of crystals in nodules on the skin (tophus). If a person has an episode of swelling but does not have crystal deposits, then gout may also be diagnosed if they have pain or redness over the joint or can't bear touch or pressure, or if pain comes on suddenly within a day, but goes away again within 2 weeks. Some laboratory tests can also confirm the diagnosis, as well as imaging with ultrasound or DECT.

ARE THESE FINDINGS NEW?

Yes, these are the first classification criteria for gout that have incorporated advanced imaging techniques such as ultrasound.

HOW RELIABLE ARE THE FINDINGS?

Classification criteria are not meant to be able to identify all possible cases of gout, and they may not work for unusual cases. But they should help doctors to identify the majority of people with gout in a standardised way.

WHAT DO THE AUTHORS PLAN ON DOING WITH THIS INFORMATION?

This information will be used to help plan new studies of gout so that the right sorts of patients are included. More studies are planned to see how these new criteria work in different settings.

WHAT DOES THIS MEAN FOR ME?

These new classification criteria will become the new standard for clinical studies of gout, and will help decide who should be enrolled into clinical trials. The new criteria will hopefully make it easier for more studies of gout to be conducted, and you may find you are asked to take part in trials for new treatments. It is very likely that the authorities and agencies that regulate the use of drugs will adopt these criteria as the standards they expect new drugs to be tested with, especially since these criteria have been developed in collaboration between the two major rheumatology organisations (ACR and EULAR).

On a day-to-day basis the criteria will not affect most people with gout, but they may have a bearing on how gout is managed and treated in the future.

Disclaimer: This is a summary of a scientific article written by a medical professional (“the Original Article”). The Summary is written to assist non medically trained readers to understand general points of the Original Article. It is supplied “as is” without any warranty. You should note that the Original Article (and Summary) may not be fully relevant nor accurate as medical science is constantly changing and errors can occur. It is therefore very important that readers not rely on the content in the Summary and consult their medical professionals for all aspects of their health care and only rely on the Summary if directed to do so by their medical professional. Please view our full Website Terms and Conditions. <http://www.bmj.com/company/legal-information/>

Date prepared: November 2015

Summary based on research article published on: 1 October 2015

From: Neogi T, *et al.* 2015. Gout classification criteria: An American College Of Rheumatology/European League Against Rheumatism collaborative initiative. *Ann Rheum Dis* 2015;74:1789–98. doi:10.1136/annrheumdis-2015-208237

Copyright © 2015 BMJ Publishing Group Ltd & European League Against Rheumatism. Medical professionals may print copies for their and their patients and students non commercial use. Other individuals may print a single copy for their personal, non commercial use. For other uses please contact our [Rights and Licensing Team](#).