

EXTENDED REPORT

Which patients stop working because of rheumatoid arthritis? Results of five years' follow up in 732 patients from the Early RA Study (ERAS)

A Young, J Dixey, E Kulinskaya, N Cox, P Davies, J Devlin, P Emery, A Gough, D James, P Prouse, P Williams, J Winfield

Ann Rheum Dis 2002;**61**:335–340

Objectives: To assess the occurrence and prognostic factors for the ability to maintain paid work in patients with rheumatoid arthritis (RA).

Setting: Inception cohort of patients with RA recruited from rheumatology departments in nine NHS Hospital Trusts in England.

Patients: All consecutive patients with RA of less than two years' duration, before any second line (disease modifying) drug treatment, and followed up for five years.

Methods: Clinical, laboratory, and radiological assessments, and all treatments were recorded prospectively using a standardised format at presentation and yearly.

Outcome measures: Changes in, and loss of paid work by five years' follow up.

Results: 732 patients completed the five year follow up. 353/721 (49%) were gainfully employed at the onset of RA, 211 (60%) were still working at five years, 104 (29%) stopped because of the disease, and 31 (9%) retired for reasons other than RA. Work disability at five years was more likely in manual workers (odds ratio (OR) 2.3, 95% confidence interval (CI) 1.4 to 3.8) and worse baseline Health Assessment Questionnaire (HAQ>1.5, OR 2.26, 95% CI 1.38 to 3.7). In combination with other baseline variables (erythrocyte sedimentation rate, sex, age of onset, and radiological erosions), employment outcome was predicted in 78% using multivariate analysis.

Conclusions: Nearly half of the patients with RA were in paid employment at onset, work disability was an adverse outcome for a third of these patients by five years, and manual work and high baseline HAQ were important predictors for this. These details are likely to be useful to clinicians, health professionals, and patients in order to plan medical, orthopaedic, and remedial treatments in early RA. Future disease modifying treatments could be compared with this cohort of patients who were treated with conventional second line drugs.

See end of article for authors' affiliations

Correspondence to:
Dr A Young, ERAS
Coordinator, Rheumatology
Unit, City Hospital,
St Albans, Herts AL3 5PN,
UK; erascsm@hotmail.com

Accepted
8 October 2001

The course of rheumatoid arthritis (RA) varies greatly from mild, even self limiting, disease to a severe destructive form within a few years. Outcome in RA has been described mainly in terms of mortality, radiographic damage, cost, and functional disability scores,¹ which has been the subject of an extensive review.² Permanent work disability (PWD) has considerable impact on patients' lives, family income, and indirect costs for society. Information on this in RA has come mainly from retrospective or cross sectional studies in America and northern Europe, which have reported variable results. The incidence of work disability in these studies varies from 29% to 50% by around five years of disease duration.^{3–9} A few prospective studies from the early stages of RA have been carried out, mainly in northern Europe, and although many of these have been limited by small sample sizes and variable follow up, a number of different predictors for work disability have been identified.^{10–19} Despite the differences in study designs, healthcare and social security arrangements, and methods for ascertaining work disability in RA in different countries and over time, most prospective studies have reported physically demanding jobs and severity of RA as important risk factors for work loss. The point at which this occurs in the course of RA does vary between studies, and another major difference between all cross sectional and prospective reports is the relative importance of disease characteristics compared with socioeconomic backgrounds and the physical nature of, and attitudes to, work.

We have previously reported on five year outcomes from the Early RA Study (ERAS), which included the occurrence of

work disability in nine regions in England¹⁸ and the importance of socioeconomic background.²⁰ An important finding from the only other UK study, based in Norfolk,¹⁹ was lack of evidence that earlier intervention with second line drugs reduced work disability rates, in contrast with a report indicating that early treatment was protective.¹⁰ Information which would be important for planning future healthcare services in the UK includes greater detail about reasons for loss of work or changes in employment during the first few years of RA, regional variations, and whether early recognition and any remedial interventions can be effective. This paper reports in greater detail on work loss due to RA in the first five years and on predictive factors for work disability in ERAS patients.

PATIENTS, MATERIALS, AND METHODS

The entry criteria and standardised assessments made by trained metrologists have been described in previous reports from this group.^{18,20} Briefly, consecutive patients with RA were recruited from rheumatology outpatient clinics in nine different districts of England if symptoms of RA had lasted for less than two years and second line drug treatment had not been used. Patients who did not fulfil the 1987 revised American College of

Abbreviations: CI, confidence interval; DMARD, disease modifying antirheumatic drug; ERAS, Early Rheumatoid Arthritis Study Group; ESR, erythrocyte sedimentation rate; HAQ, Health Assessment Questionnaire; OR, odds ratio; PWD, permanent work disability; RA, rheumatoid arthritis

Rheumatology criteria for RA²¹ continued to be followed up and subjected to subgroup analysis. Only patients who completed five years' follow up have been included in this analysis. Details of differences between centres have been reported previously.¹⁸

Yearly assessments included two articular indices, one based mainly on tenderness, the Ritchie articular index,²² and the other on swelling, as previously described,¹⁸ visual analogue pain scale, functional grade,²³ the disability index of the modified Stanford Health Assessment Questionnaire (HAQ),²⁴ erythrocyte sedimentation rate (ESR), and rheumatoid factor (RF). ERAS started in 1987 and did not include all the components needed to calculate recently recommended disease activity scores and response criteria, but did for the disease activity score based on three variables: Ritchie articular index, swollen joint count, and ESR.²⁵

Also recorded were all comorbid conditions, including any extra-articular manifestations of RA. Socioeconomic information included social class, educational level, and Carstairs deprivation index, as previously described.²⁰ Details of paid employment were defined by economic activity.²⁶ Also recorded were details of home support, house alterations, and number and type of social security and employment allowances (mobility, attendance, daily living, incapacity, care, and disability allowances, income support, and unemployment benefits). The main outcome was any major change in paid employment from baseline and the reasons for this. This included alteration in hours worked, time off work, and PWD, defined as when a patient leaves the paid labour force because of ill health. For purposes of analysis, the type of work has been grouped into mainly manual, semi-manual, semi-sedentary, mainly sedentary, and part time (<5 hours) or full time (≥5 hours).

Treatment

All centres followed the framework of the published UK guidelines for management of RA,²⁷ which includes the provision of therapy services, appropriate orthopaedic interventions, and sequential use of second line or disease modifying antirheumatic drugs (DMARDs), together with measures to relieve symptoms, including judicious use of steroids. Combination treatment was used in severe and non-responsive RA. The DMARDs used were chosen according to the doctor's preference, although dosage schedules employing graduated regimens were previously agreed according to standard practice for each drug.

Various arrangements were in place in all ERAS centres to deal with work related problems, but not specifically for patients with early RA who were working but beginning to experience problems at work. These varied in the use of physiotherapy and occupational therapy departments, rehabilitation units, and occupational physicians. The last two were usually only used once patients had become work disabled. Two hospitals had physiotherapists or occupational therapists who had special interests in this field and were able to assess patients at the work place.

Statistical analysis

Summary statistics have been used to demonstrate differences in clinical and laboratory features between outcomes at five years. Median values with interquartile ranges are shown for continuous variables and tested for significance with the Mann-Whitney test. For categorical variables odds ratios (OR) with 95% confidence intervals (CI) were calculated. Logistic regression (for an outcome of work loss by five years) and Cox regression (with time to disability as a response variable) were both used to predict work disability from a number of clinical and laboratory measurements at baseline and at one year.

Patient sample

The clinical characteristics of this cohort of 732 patients followed up for five years have been described in detail elsewhere.¹⁸ The median duration of symptoms of RA before presentation to rheumatology departments and entry to the study was six (4–11) months. A total of 617 (84%) patients received at least one DMARD at a median of two months from first presentation (68% within three months and 87% by 12 months). Of the patients treated with DMARDs, 49.5% required more than one drug, and overall use of these drugs was sulfasalazine (45%), methotrexate (17%), intramuscular gold (15%), D-penicillamine (10%), antimalarial drugs (5%), and various others (8%). Oral steroids in doses of 7.5 mg daily or more for 12 months or more were used in 16%.

RESULTS

Employment details at baseline

At presentation, 368 (52%) patients were not in paid employment: 166 (23%) were housewives, 188 (26%) had already retired, 12 (1.6%) were unemployed, and two were students. Table 1 gives demographic and baseline clinical features by

Table 1 Work status and clinical features at baseline*

	Total No (%)	Job status at baseline		Type of job at baseline			
		Not working No (%)	In paid work No (%)	Manual No (%)	Semi-manual No (%)	Semi-sedentary No (%)	Sedentary No (%)
Total	721 (100)	368 (51)	353 (49)	81 (23)	61 (17)	82 (23)	129 (37)
Sex							
Male	249 (35)	107 (29)	142 (40)	63 (78)	26 (43)	21 (26)	32 (25)
Female	472 (65)	261 (71)	211 (60)	18 (22)	35 (57)	61 (74)	97 (75)
Age at onset							
<45	180 (25)	40 (11)	140 (40)	25 (31)	27 (44)	34 (41)	54 (42)
45–60	296 (41)	110 (30)	186 (53)	46 (57)	32 (52)	41 (50)	67 (52)
>60	245 (34)	218 (59)	27 (7.6)	10 (12)	2 (3.3)	7 (8.5)	8 (6.2)
ACR criteria							
<4 ACR	225 (31)	117 (32)	108 (31)	24 (30)	16 (26)	24 (29)	44 (34)
≥4 ACR	496 (69)	251 (68)	245 (69)	57 (70)	45 (74)	58 (71)	85 (66)
RF							
Neg	265 (37)	141 (38)	124 (36)	27 (34)	22 (36)	24 (30)	51 (40)
Pos	452 (63)	227 (62)	225 (64)	53 (66)	39 (64)	56 (70)	77 (60)
Radiographic erosions							
Absent	530 (75)	262 (73)	268 (78)	59 (74)	43 (70)	68 (86)	98 (78)
Present	173 (25)	96 (27)	77 (22)	21 (26)	18 (30)	11 (14)	27 (22)
Functional grade							
I	239 (33)	108 (29)	131 (37)	36 (45)	17 (28)	31 (38)	47 (36)
II	429 (60)	223 (61)	206 (59)	39 (49)	41 (67)	46 (56)	80 (62)
III	51 (7.1)	36 (9.8)	15 (4.3)	5 (6.3)	3 (4.9)	5 (6.1)	2 (1.6)

*Missing job details at baseline = 11.

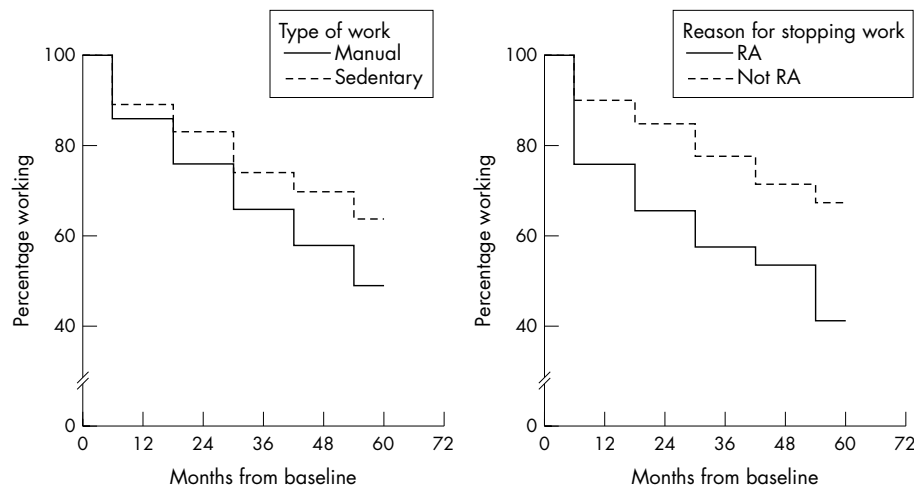


Figure 1 Patients still working at 0–60 months.

occupational status. This shows little variation between working and non-working patients, except that younger patients and more men were working, the latter mainly in manual type jobs. Of those working, the majority were in full time work ($n=285$, 81%). Part time workers were more likely to be in sedentary (14.5%) rather than manual jobs (10%). The 15 employed patients who were in functional grade III/IV at presentation were temporarily off work because of RA at this time. Employment rates varied from 34% to 59% between ERAS centres, explained largely by differences in age, sex, and socioeconomic background.²⁰ Occupational status was missing in 11 patients (all <65 years, five close to retirement age). Thus the main analysis concerns the 353 patients who were working at baseline.

Job status at five years

By five years' follow up, 211 (60%) remained working in varying capacities; 188 remained in the same job, although 27 had reduced their hours of work, 15 changed to lighter work, and eight took more manual jobs. A total of 142 patients stopped working for the following reasons: age related retirement in 25 (18%), redundancies, social or personal reasons in six (4%), and RA in 80 (56%). In a further 24 (17%), several factors including RA were responsible for early retirement, the others being comorbidity ($n=16$) or social reasons ($n=8$). Forty per cent of patients overall had some time off work (mean number of months was 5.1).

Time from presentation of RA to loss of employment

Figure 1 shows that the rate of job loss occurred earlier in manual than in non-manual workers, but at a regular steady rate, and RA related work loss occurred much earlier than job loss for other reasons. Of the 368 patients not working at presentation, 13 had lost their jobs as a result of RA in the time from the onset of RA and before presentation to rheumatology departments. Comorbidity was a factor in five of these. Another eight patients not working for other reasons (all were housewives and mothers) were working by the five year follow up.

Risk factors for work disability

We have attempted to deal with two issues. Firstly, the relative importance of the severity of RA and type of job as factors contributing to work disability, an issue which has not been fully resolved on review of previously reported rheumatological studies. Secondly, whether it was possible to predict work disability over five years' follow up from clinical parameters at baseline.

Severity of RA as a risk factor

Figure 2 shows serial HAQs over five years in groups based on reasons for PWD. Patients who stopped work because of RA already had worse HAQs at baseline, and these did not stabilise with time as in other groups. Patients who stopped working because of RA were older, and had higher HAQ, joint and pain scores over time than those who remained employed (Mann-Whitney, $p<0.0000$ for all these variables), and higher ESRs ($p<0.0005$) (table 2). Table 3 shows categorical variables at the time of PWD for these groups. The results indicate the importance of persistence and severity of RA as well as manual work and less favourable socioeconomic backgrounds on loss of work within the first five years.

Predicting work disability using baseline clinical features

Univariate analysis

Job loss due to RA was more likely in those with a high ESR (OR 2.37, 95% CI 1.4 to 3.9); HAQ > 1.5 (OR 2.26, 95% CI 1.38 to 3.7); presence of erosions (OR 2.09, 95% CI 1.19 to 3.64); manual type work (OR 2.97, 95% CI 1.26 to 6.9).

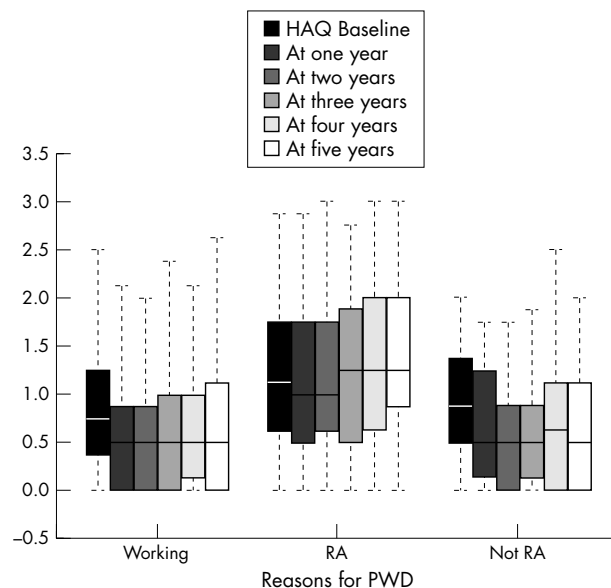


Figure 2 Change in HAQ over five years according to reasons for work disability.

Table 2 Work disability by five years. Clinical features according to reasons for permanent work disability (PWD). Results are shown as median (IQR)

	Total	Age of onset	RA symptoms	HAQ	Joint score	Pain VAS	ESR
Reasons for PWD							
Still working	211	43.0 (36.0–51.0)	7.0 (4.0–12.0)	0.6 (0.3–0.9)	7.0 (3.8–12.5)	28.4 (13.2–40.5)	20.3 (12.0–31.5)
RA	80	52.0* (45.0–56.0)	6.0 (4.0–12.0)	1.1* (0.6–1.8)	12.2* (8.3–20.6)	41.4* (26.2–53.1)	36.9† (15.5–55.0)
RA+other	8	43.5 (40.5–51.0)	6.5 (3.0–9.5)	0.9 (0.6–1.1)	9.1 (5.1–17.0)	46.9 (24.8–55.8)	51.0 (25.0–60.3)
RA+comorbidity	16	51.5 (46.0–55.0)	6.0 (4.0–11.5)	1.2 (0.9–1.6)	14.3 (8.5–27.3)	34.0 (25.7–54.3)	42.0 (19.5–58.0)
Not RA	31	60.0 (53.0–64.0)	6.0 (2.0–10.0)	0.6 (0.3–1.0)	9.8 (5.3–16.3)	28.5 (15.4–37.0)	21.7 (12.7–33.8)

Median (IQR) based on time integrated (area under the curve) values of clinical variables up to time of work loss.

RA symptoms = months of symptoms of RA before baseline visit.

* $p < 0.0000$ Mann-Whitney (still working v stopped because of RA); † $p < 0.0005$ Mann-Whitney (still working v stopped because of RA).

Multivariate analysis

Multivariate analysis was performed using both logistic and Cox regression with the following baseline variables: type of employment, sex, age of onset, radiographs of hands and feet, functional grade, HAQ, rheumatoid factor, joint scores, and ESR. Among those working, there were 245 patients with non-missing values for the above predictors who were below retirement age (65 for men, 60 for women) at five years or at reaching work disability, whichever came first.

Logistic regression selected HAQ ($p=0.0344$), ESR ($p=0.0027$), age at onset ($p=0.0001$), radiographs ($p=0.0739$), sex ($p=0.0368$), and type of employment ($p=0.0032$) as predictors of PWD (table 4). This model resulted in correct prediction overall of 77.9%, specificity 89.7% and sensitivity 53.7%. The positive predictive value was

72%, and negative predictive value 80%. As can be seen from table 4, manual jobs carried significant risk of PWD, as well as an HAQ of ≥ 1 . A raised ESR was also highly significant, as were age and sex effects. The presence of radiographic erosions was included in the list of predictors, although only marginally significant.

To test the validity of the selected model, we split the data randomly into two subsamples (60% and 40%). Overall correct prediction was 77.21% for the training subsample, and 76.15% for the testing sample. These results confirm that the six predictors which we have selected are relevant for prediction of PWD. When stepwise logistic regression with the above predictors both at baseline and at one year was used, the final model selected was as described above except for HAQ at one year. Such a model had overall prediction quality of 80.17%

Table 3 Clinical features at five years by reasons for work disability

	Total No (%)	Reasons for PWD					OR (95% CI)
		Working No (%)	RA No (%)	RA+other No (%)	RA+comorbidity No (%)	Not RA No (%)	
Total	346 (100)	211 (61)	80 (23)	8 (2)	16 (5)	31 (9)	
Sex							
Male	140 (40)	85 (40)	34 (43)	3 (38)	6 (38)	12 (39)	
Female	206 (60)	126 (60)	46 (58)	5 (63)	10 (63)	19 (61)	
Job at baseline							
Manual	79 (23)	42 (20)	28 (35)	2 (25)	3 (19)	4 (13)	
Semi-manual	60 (17)	33 (16)	17 (21)	1 (13)	5 (31)	4 (13)	
Semi-sedentary	80 (23)	51 (24)	19 (24)	0	0	10 (32)	Manual v sedentary
Sedentary	127 (37)	85 (40)	16 (20)	5 (63)	8 (50)	13 (42)	2.3 (1.4 to 3.8)
Carstairs deprivation							
1 (least)	83 (24)	59 (29)	11 (14)	1 (13)	5 (31)	7 (23)	
2	87 (26)	56 (27)	16 (21)	4 (50)	2 (13)	9 (30)	
3	77 (23)	43 (21)	23 (29)	1 (13)	5 (31)	5 (17)	
4	56 (17)	35 (17)	11 (14)	0	3 (19)	7 (23)	1, 2, 3 v 4, 5
5 (worst)	36 (11)	14 (6.8)	17 (22)	2 (25)	1 (6.3)	2 (6.7)	2.3 (1.4 to 3.8)
RF							
Neg	72 (21)	42 (20)	18 (23)	1 (13)	2 (13)	9 (29)	
Pos	274 (79)	169 (80)	62 (78)	7 (88)	14 (88)	22 (71)	
Erosions on x ray examination							
Absent	70 (20)	52 (25)	7 (8.8)	0	2 (13)	9 (29)	
Present	276 (80)	159 (75)	73 (91)	8 (100)	14 (88)	22 (71)	2.8 (1.4 to 5.8)
Nodules							
Absent	239 (69)	155 (73)	50 (63)	6 (75)	8 (50)	20 (65)	
Present	107 (31)	56 (27)	30 (38)	2 (25)	8 (50)	11 (35)	1.8 (1.1 to 3.0)
Functional grades							
I	173 (50)	131 (62)	17 (21)	2 (25)	3 (20)	20 (65)	
II	153 (44)	74 (35)	53 (66)	6 (75)	10 (67)	10 (32)	I v II–IV
III/IV	19 (5.5)	6 (2.8)	10 (13)	0	2 (13)	1 (3.2)	5.9 (3.3 to 10)
Drugs 5 years							
0 NSAIDs	51 (15)	35 (17)	7 (8.8)	1 (13)	1 (6.3)	7 (23)	
1 DMARD x1	149 (43)	97 (46)	26 (33)	5 (63)	7 (44)	14 (45)	
2 DMARD x2	72 (21)	44 (21)	19 (24)	1 (13)	3 (19)	5 (16)	0, 1 v 2, 3
3 DMARD x3	74 (21)	35 (17)	28 (35)	1 (13)	5 (31)	5 (16)	2.1 (1.3 to 3.4)
DAS 5 years							
1 Remission	46 (13)	35 (17)	3 (3.8)	1 (13)	1 (6.3)	6 (19)	
2 Partial	55 (16)	41 (19)	7 (8.8)	2 (25)	0	5 (16)	1, 2 v 3
3 Active RA	224 (65)	127 (60)	61 (76)	5 (63)	13 (81)	18 (58)	4.2 (2.1 to 8.4)

Patients not included: missing job status at five years (n=7); started work after baseline visit (n=8); missing DAS at five years (n=21).

Table 4 Logistic and Cox regression

Variable	Logistic regression		Cox regression	
	Exp (B)	95% CI	Exp (B)	95% CI
Age at onset	1.0837	1.0403 to 1.1289	1.0653	1.0323 to 1.0994
ESR (raised)	2.7934	1.4265 to 5.4704	1.7905	1.0792 to 2.9705
Manual work	4.9465	1.9371 to 12.6313	2.9467	1.4807 to 5.8641
Semi-manual	4.0204	1.6084 to 10.0497	2.6823	1.3817 to 5.2073
Semi-sedentary	2.0421	0.8593 to 4.8525	1.7661	0.8737 to 3.4901
Sex	2.4030	1.0551 to 5.4733	1.6805	0.9573 to 2.9499
Erosions	1.9403	0.9379 to 4.0140	1.7802	1.1031 to 2.8729
HAQ (0.5–1)	1.1629	0.4969 to 2.7215	1.0752	0.5430 to 2.1291
HAQ (1.12–1.5)	2.4106	0.9873 to 5.8854	1.6270	0.8440 to 3.1363
HAQ (>1.5)	3.5789	1.3154 to 9.7372	2.7429	1.3676 to 5.5013

Logistic and Cox regression. The following possible predictive variables at presentation were investigated: type of employment (four categories, manual to sedentary), sex, age at onset (covariate), x ray examination of hands and feet (erosions or not), functional grades, HAQ categories (<0.5, 0.5–1, 1.12–1.5, 1.62–3), RF (negative or positive), joint score (quartiles), and ESR (normal or raised). Adjusted odds ratios or relative hazards are under Exp(B), and confidence intervals for them in the next column. The odds ratios for HAQ categories were compared with the lowest HAQ category; for job status with sedentary; for sex, female with male; for ESR with normal; for x rays with the presence of erosions.

(random split resulted in 78.06% v 72.22% for the two subsamples). The HAQ at one year was a slightly better predictor than HAQ at onset, but the model was not overwhelmingly better.

We also performed Cox regression, with time to disability as the response variable (table 4). The same predictors were chosen: HAQ categories ($p=0.0130$), ESR category ($p=0.0241$), age at onset ($p=0.0001$), radiographs ($p=0.0182$), sex ($p=0.0706$), and type of employment ($p=0.0092$). All the predictors were essentially the same for the Cox regression as for the logistic regression, although sex was only marginally significant in the Cox regression.

DISCUSSION

The clinical profiles of patients with early RA given conventional drug treatment in this study showed that nearly half were in paid employment at onset, and most of these were still working at five years (60%). However, a third of patients lost their jobs by five years because of RA, often early on. Thirteen patients were already work disabled by the first presentation to rheumatology clinics, a lower proportion than in some studies, which reported 42%¹⁴ and 18%.¹⁹ Severity of disease, manual work, age of onset, and less favourable socioeconomic background were important factors for work disability. In our patients the most important factors at baseline for PWD identified by logistic regression were manual-type work and HAQ >1.5. In combination with other independent clinical features, correct prediction was 78%. Comorbid conditions in addition to RA were important factors in 16 patients, a feature not reported in other studies. Some of the differences seen between centres could be explained by population and socioeconomic differences in employment status. We have previously reported the adverse effect of lower socioeconomic status on functional scores in RA.²⁰

Work disability rates vary considerably in prospective studies,^{10–19} a subject of recent reviews.^{19, 28} However, of those prospective studies which recruited patients in the past 10 years, many reported similar rates of work disability as our study of around 30–40% by five years. Severity of RA and heavy work, which we found to be the most important factors for work disability, were reported in only some studies. An unresolved issue in published rheumatological reports for risk factors for work disability is the relative importance of the severity of RA compared with socioeconomic background and type of work, for which quite different management strategies are required. From retrospective surveys in America, Yelin *et al* identified social and work place factors,³ and Callahan *et al* reported that socioeconomic and functional measures had the

greatest impact on work loss in patients with RA.³ Of 119 patients surveyed with a mean disease duration of nearly two years in the Netherlands,⁸ 40% had PWD because of RA, and this was dependent on clinical and laboratory features of disease severity and on educational level. Reisine *et al* reported that clinical features rather than physical demands of the job were more important for work status in 392 patients (61% with RA >5 years).⁶ Wolfe and Hawley found persistent abnormalities of ESR, HAQ, and pain over time were the best predictors of PWD in 456 patients who had very variable disease duration at the time of study.⁷ In a placebo controlled drug trial in early RA, Borg *et al* described younger age, low HAQ and joint score, white collar work, and self employment as protective at two years.¹⁰

Examining predictive factors at presentation, Eberhardt and Fex reported that in a Swedish inception cohort of 144 patients, one third stopped working and 16% changed or reduced their work arrangements by the second year of follow up.¹² No sociodemographic features had predictive value, but initially high HAQ and physically demanding employment carried a worse prognosis for work loss at two years,¹² and HAQ, age and educational level at four years.¹⁴ Kaarela *et al* and Jantti *et al*, both reported on an inception cohort in Finland, but at different follow up stages, and showed that severity of disease was the main cause of work disability, although significantly smaller numbers of patients with arduous jobs were able to continue.^{11, 15} In their series of 103 patients, work disability increased from 31% at one year to 80% by 20 years, because of RA in 42/66 at this time. Mau *et al* reported 37% PWD in 73 patients (mainly by three years) followed up prospectively for four to eight years in northern Germany.¹³ Predictors for PWD were older age, high ESR, and more physical type of work. Barrett *et al* found that one third of 160 patients in a community based study in one region in England had stopped working by around five years.¹⁹ Although type of employment and age were identified as additional factors in multivariate analysis, only baseline HAQ was a significant predictor for this. Sokka *et al* reported that heavy work was the strongest independent risk factor for PWD.¹⁶

The main strengths of this study include recruitment from the earliest stages of RA before use of second line drugs, the relatively few exclusion criteria (which are so restrictive in clinical trials), thus reflecting actual clinical practice, yearly standardised assessments, and good follow up. Possible sources of bias, including treatment effects and left and right censoring, have been previously described.¹⁸ Although the effects of different DMARDs cannot be accounted for, our patients were being treated early in a conventional manner.

Clearly, arrangements for patients heading for work disability were not geared to a rapid response in the nine hospitals taking part, and it is likely that this reflects similar practice elsewhere in the UK. Nor was there close collaboration between rheumatologists and occupational physicians, and all centres agreed that this aspect of the rheumatology service could be improved. The identification of factors indicative of poor outcome early in the course of RA is crucial for tailoring treatment and supporting coping mechanisms.²⁹ There are a number of potential opportunities for interventions to prevent work disability, apart from controlling disease with disease modifying drugs. These include remedial treatment and rehabilitation,²⁸ and with predictive factors in mind, should be considered early and before work loss. The latter is often an irreversible outcome and not always in the patients' interest, whereas the disease course and severity may be improved by stopping work. Closer communication between rheumatologists, health professionals, occupational physicians, and employers would seem to be the most obvious requirement. The measures we have identified which predict this outcome in 78% are simple and could be used routinely in early RA to help this process.

ACKNOWLEDGEMENTS

The ERAS group was funded by the Arthritis Research Campaign (ARC) and BUPA Research Foundation. The ERAS coordinator is funded by an ARC Academic Secretary grant. The authors thank Cathy Mayes, Annie Seymour, Terry McCourt, Lynn Hill, Linda Waterhouse, Hazel Tait, Dora White, Sue Stafford, Helen Dart, Cathy Boys, and Alison Kent for their invaluable metrology work.

Authors' affiliations

A Young, City Hospital, St Albans AL3 5PN, UK
J Dixey, Orthopaedic Hospital, Oswestry TF6 6TF, UK
E Kulinskaya, Health Research and Development Support Unit, University of Hertfordshire, UK
N Cox, Royal Hants Hospital, Winchester SO22 5DG, UK
P Davies, Broomfield Hospital, Chelmsford CM1 6ET, UK
J Devlin, **A Gough**, Selly Oak Hospital, Birmingham B29 6JD, UK
P Emery, Rheumatology Research Unit, Leeds LS2 9NZ, UK
D James, Diana Princess of Wales Hospital, Grimsby DN33 2BA, UK
P Prouse, District Hospital, Basingstoke RG24 9NA, UK
P Williams, Medway Hospital, Gillingham ME7 5NY, UK
J Winfield, Royal Hallamshire Hospital, Sheffield S11 9EL, UK

The authors are all members of the Early Rheumatoid Arthritis Study Group, ERAS, UK.

REFERENCES

- Fries JF**, Spitz PW, Kraines RG, Holman HR. Measurement of patient outcome in rheumatoid arthritis. *Arthritis Rheum* 1980;23:137-145.
- Scott DL**. The course and outcome in rheumatoid arthritis. *Baillieres Clin Rheumatol* 1992;6:1-23.
- Yelin E**, Meenan R, Nevitt M. Work disability in rheumatoid arthritis: effects of disease, social and work factors. *Ann Intern Med* 1980;93:551-6.
- Makisara GL**, Makisara P. Prognosis of functional capacity and work capacity in rheumatoid arthritis. *Clin Rheumatol* 1982;1:117-25.
- Callahan LF**, Bloch DA, Pincus T. Identification of work disability in rheumatoid arthritis: physical, radiographic and laboratory variables do not add explanatory power to demographic and functional variables. *J Clin Epidemiol* 1992;45:127-38.
- Reisine S**, McQuillan J, Fifield J. Predictors of work disability in rheumatoid arthritis patients. A five year follow up. *Arthritis Rheum* 1995;38:1630-7.
- Wolfe F**, Hawley DJ. The long-term outcomes of rheumatoid arthritis: work disability: a prospective 18 year study of 823 patients. *J Rheumatol* 1998;25:2108-17.
- Doeglas D**, Suurmeijer T, Krol B, Sanderman R, Leeuwen M, Rijswijk M. Work disability in early rheumatoid arthritis. *Ann Rheum Dis* 1995;54:455-60.
- van Jaarsveld CHM**, Jacobs JWG, Schrijvers AJP, van Albada-Kuipers GA, Hofman DM, Bijlsma JWJ. Effects of rheumatoid arthritis on employment and social participation during the first years of disease in the Netherlands. *Br J Rheumatol* 1998;37:848-53.
- Borg G**, Allander E, Berg E, Brodin U, From A, Trang L. Auranofin treatment in early rheumatoid arthritis may postpone early retirement. Results from a 2-year double blind trial. *J Rheumatol* 1991;18:1015-20.
- Kaarela K**, Lehtinen K, Luukkainen R. Work capacity of patients with inflammatory joint disease. *Scand J Rheumatol* 1987;16:403-6.
- Eberhardt KB**, Fex E. Functional impairment and disability in early rheumatoid arthritis -development over 5 years. *J Rheumatol* 1995;22:1037-42.
- Mau W**, Bormann M, Weber H, Weidemann HF, Hecker H, Raspe HH. Prediction of permanent work disability in a follow-up study of early rheumatoid arthritis: results of a tree structured analysis using recpam. *Br J Rheumatol* 1996;35:652-9.
- Fex E**, Larsson B-M, Nived K, Eberhardt K. Effect of RA on work status and social and leisure time activities in patients followed 8 years from onset. *J Rheumatol* 1998;25:44-50.
- Jantti J**, Aho K, Kaarela K, Kautiainen H. Work disability in an inception cohort of patients with seropositive rheumatoid arthritis: a 20 year study. *Rheumatology (Oxford)* 1999;38:1138-41.
- Sokka T**, Kautiainen H, Hannonen P. Work disability in rheumatoid arthritis 10 years after the diagnosis. *J Rheumatol* 1999;26:1681-5.
- Albers JM**, Kuper HH, van Riel P, Prevoo ML, van 't Hof MA, van Gestel AM, et al. Socio-economic consequences of rheumatoid arthritis in the first five years of the disease. *Rheumatology (Oxford)* 1999;38:423-30.
- Young A**, Dixey J, Cox N, Davies P, Devlin J, Emery P, et al. How does functional disability in early rheumatoid arthritis (RA) affect patients and their lives? Results of 5 yr follow up in 781 patients from the Early RA Study (ERAS). *Rheumatology (Oxford)* 2000;39:603-11.
- Barrett EM**, Scott DGI, Wiles NJ, Symmons DPM. The impact of rheumatoid arthritis on employment status in the early years of disease: a UK community-based study. *Rheumatology (Oxford)* 2000;39:1403-9.
- Young A**, Wilkinson P, Talamo J, Dixey J, Cox N, Davies P, et al. Socio-economic factors in the presentation and outcome of early rheumatoid arthritis. Lessons for the health service? *Ann Rheum Dis* 2000;59:794-9.
- Arnett FC**, Edworthy SM, Bloch DA, McShane DJ, Fries JF, Cooper NS, et al. The ARA 1987 revised criteria for classification of rheumatoid arthritis. *Arthritis Rheum* 1988;31:315-324.
- Ritchie DM**, Boyle JA, McInnes JM, Josani MK, Dalakas TC, Orjeson P, et al. Clinical studies with an articular index for the assessment of joint tenderness in patients with rheumatoid arthritis. *Q J Med* 1968;37:393-406.
- Steinbrocker O**, Traeger CH, Batterman RC. Therapeutic criteria in rheumatoid arthritis. *JAMA* 1949;140:659-62.
- Fries J**, Spitz P, Young D. Dimensions of health outcomes: the health assessment questionnaire, disability and pain scales. *J Rheumatol* 1982;9:789-93.
- van der Heijde DMPM**, van't Hof MA, van Riel PLCM, Theunisse LA, Lubberts EW, van Leeuwen MA, et al. Judging disease activity in clinical practice in rheumatoid arthritis: first step in the development of a disease activity score. *Ann Rheum Dis* 1990;49:916-20.
- Office of National Statistics**. *Classification of occupations and coding index*. London: HMSO, 1980.
- Joint working group of British Society of Rheumatology and Royal College of Physicians**. Guidelines and audit measures for the specialist supervision of patients with rheumatoid arthritis. *J Roy Coll Physicians Lond* 1992;26:76-82.
- Shanahan EM**, Smith MD. Rheumatoid arthritis, disability and the workplace. *Baillieres Clin Rheumatol* 1999;13:675-88.
- Young A**, van der Heijde D. Can we predict aggressive disease? *Baillieres Clin Rheumatol* 1997;11:27-48.