

ARD

Annals of the Rheumatic Diseases
The EULAR Journal

Editor

Leo van de Putte (Nijmegen)

Associate editors

Thomas Bardin (Paris)
Gerd Burmester (Berlin)
Frank Wollheim (Lund)
Tony Woolf (Truro)

Methodological adviser

Paco Welsing (Nijmegen)

Editorial board

Paul Bacon (Birmingham)
Wim van den Berg (Nijmegen)
Maarten Boers (Amsterdam)
Barry Bresnihan (Dublin)
Maurizio Cutolo (Genova)
Maxime Dougados (Paris)
Gary Firestein (San Diego)
Wolfgang Gross (Lubeck)
Mieke Hazes (Leiden)
Gabriel Herrero-Beaumont (Madrid)
Marc Hochberg (Baltimore)
Christian Jorgensen (Montpellier)
Tore Kvien (Oslo)
Marjatta Leirisalo-Repo (Helsinki)
Frank Luyten (Leuven)

Blaž Rozman (Ljubljana)
Hendrik Schulze-Koops (Erlangen)
Josef Smolen (Vienna)
Alex So (Lausanne)
Deborah Symmons (Manchester)
Auli Toivanen (Turku)
Alan Tyndall (Basle)
A Tzioufas (Athens)
Jifi Vencovsky (Praag)
Michael Weisman (Los Angeles)
Patricia Woo (London)
Michael Yaron (Tel Aviv)
Hasan Yazici (Istanbul)
Editor, BMJ

Advisory committee

Bernard Amor (Paris)
Stefano Bombardieri (Pisa)
Ferdinand Breedveld (Leiden)
Leslie Crofford (Ann Arbor)
Jean-Michel Dayer (Geneva)
Marie Christine de Vernejoul (Paris)
Michael Doherty (Nottingham)
John Edmonds (Sydney)
Paul Emery (Leeds)
Öystein Förre (Oslo)
Daniel Furst (Seattle)
Steffen Gay (Zurich)
Joachim Kalden (Erlangen)
Edward Keystone (Toronto)
Lars Klareskog (Stockholm)

Peter Lipsky (Bethesda)
Stefan Lohmander (Lund)
Roman Lorenc (Warsaw)
R Maini (London)
Emilio Martin-Mola (Madrid)
Haralampos Moutsopoulos (Athens)
James O'Dell (Omaha)
Karel Pavelka (Prague)
Josef Rovinsky (Piestany)
Yehuda Shoenfeld (Tel-Hashomer)
Walthar van Venrooij (Nijmegen)
Eric Veys (Gent)
Thomas Vischer (Geneva)
Allan Wiik (Copenhagen)

Instructions to authors

Full instructions are available online at www.annrheumdis.com/misc/ifora.shtml
If you do not have web access please contact the editorial office:
Editor: Annals of the Rheumatic Diseases
University Medical Centre Nijmegen
Department of Rheumatology
PO BOX 9101
6500 HB Nijmegen
Netherlands
Telephone +31 24 361 9851
Fax +31 24 361 9850
Email: annrheumdis.edoff@worldonline.nl

Subscription information

See p iv

Copyright

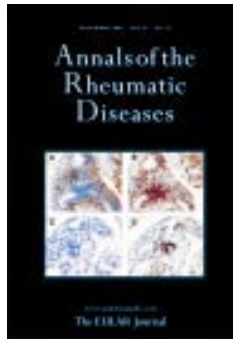
© 2002 *Annals of the Rheumatic Diseases*. All rights reserved; no part of this publication may be reproduced, stored in a retrieval system, or transmitted in any form or by any means, electronic, mechanical, photocopying, recording, or otherwise without the prior permission of *Annals of the Rheumatic Diseases*

Authors are required to grant *Annals of the Rheumatic Diseases* an exclusive licence to publish; further details available online at www.annrheumdis.com/misc/ifora.shtml

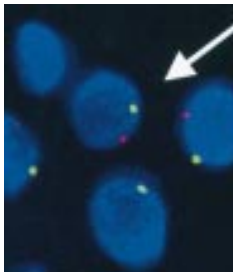
- *Annals of the Rheumatic Diseases* is published by BMJ Publishing Group and printed in the UK on acid free paper by Stephens and George Magazines Limited, Merthyr Tydfil
- Periodicals postage paid, Rahway, NJ. Postmaster: send address changes to: *Annals of the Rheumatic Diseases*, c/o Mercury Airfreight International Ltd, 365 Blair Road, Avenel, NJ 07001, USA

contents ARD

Volume 61 Number 12 December 2002



Detection of RANKL in synovial tissue.
See p 1047.



See p 1041



See p 1075

Leader

- 1039 Microchimerism in Sjögren's syndrome
R Giacomelli, M Matucci-Cerinic, S Bombardieri

Extended reports

- 1041 Detection of maternal-fetal microchimerism in the inflammatory lesions of patients with Sjögren's syndrome
M Kuroki, A Okayama, S Nakamura, T Sasaki, K Murai, R Shiba, M Shinohara, H Tsubouchi
- 1047 Receptor activator NF- κ B ligand (RANKL) expression in synovial tissue from patients with rheumatoid arthritis, spondyloarthropathy, osteoarthritis, and from normal patients: semiquantitative and quantitative analysis
T N Crotti, M D Smith, H Weedon, M J Ahern, D M Findlay, M Kraan, P P Tak, D R Haynes
- 1055 Ten year outcome in a cohort of patients with early rheumatoid arthritis: health status, disease process, and damage
E Lindqvist, T Saxne, P Geborek, K Eberhardt
- 1060 Purine enzymes in patients with rheumatoid arthritis treated with methotrexate
A E van Ede, R F J M Laan, R A De Abreu, A B J Stegeman, L B A van de Putte
- 1065 Definition of risk factors for death, end stage renal disease, and thromboembolic events in a monocentric cohort of 338 patients with systemic lupus erythematosus
K Manger, B Manger, R Repp, M Geisselbrecht, A Geiger, A Pfahlberg, T Harrer, J R Kalden
- 1071 Chronic widespread pain in the population: a seven year follow up study
A C Papageorgiou, A J Silman, G J Macfarlane
- 1075 Rhythmic variations in pain, stiffness, and manual dexterity in hand osteoarthritis
N Bellamy, R B Sothorn, J Campbell, W W Buchanan
- 1081 Investigation of chromosome 2q in osteoarthritis of the hand: no significant linkage in a Tasmanian population
J Stankovich, M M Sale, H M Cooley, M Bahlo, A Reilly, J L Dickinson, G Jones
- 1085 Clinical decision rules in rheumatoid arthritis: do they identify patients at high risk for osteoporosis? Testing clinical criteria in a population based cohort of patients with rheumatoid arthritis recruited from the Oslo Rheumatoid Arthritis Register
G Haugeberg, R E Ørstavik, T Uhlig, J A Falch, J I Halse, T K Kvien
- 1090 Diagnostic associations in a large and consecutively identified population positive for anti-SSA and/or anti-SSB: the range of associated diseases differs according to the detailed serotype
I Peene, L Meheus, E M Veys, F De Keyser
- 1095 Loss of transforming growth factor counteraction on interleukin 1 mediated effects in cartilage of old mice
A Scharstuhl, H M van Beuningen, E L Vitters, P M van der Kraan, W B van den Berg

Concise reports

- 1099 A comparison between the Farr radioimmunoassay and a new automated fluorescence immunoassay for the detection of antibodies against double stranded DNA in serum *R H W M Derksen, E J E G Bast, T Strooisma, J W G Jacobs*
- 1103 Reliability of the Southampton examination schedule for the diagnosis of upper limb disorders in the general population *K Walker-Bone, P Byng, C Linaker, I Reading, D Coggon, K T Palmer, C Cooper*
- 1107 Magnetic resonance imaging of skeletal muscle involvement in limb restricted vasculitis *S Gallien, A Mahr, F Réty, M Kambouchner, F Lhote, P Cohen, L Guillevin*

Letters

- 1110 Polymyositis with cardiac manifestations and unexpected immunology *I Morrison, A McEntegart, H Capell*
- 1111 Eosinophilic fasciitis with multiple myeloma: a new haematological association *D Khanna, A Verity, J M Grossman*
- 1113 Dust exposure: a missed environmental factor of Wegener's granulomatosis *B Granel, J Serratrice, P Disdier, S Abdul, R Gras, F Martin, L Swiader, P-J Weiller*

- 1114 Spinal cord stimulation in Buerger's disease *A V Pace, N Saratzis, D Karokis, D Dalainas, G D Kitas*

EULAR news

- 1115 Standing Committee on Epidemiology and Health Services Research *S van der Linden*
- 1116 Health Professionals Standing Committee *N Price*

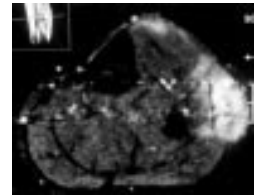
Matters arising

- 1117 Probable adverse effects of long term use of somatostatin analogues in patients with RA *S Marcora, A Lemmey, P Maddison, D Paran, O Elkayam*

- 1117 Forthcoming events

Online submission

- 1054 New ARD online submission and review system
- 1118 Subject index
- 1133 Author index
- Contents



See p 1107