

Editor

Leo van de Putte (Nijmegen)

Associate editors

Thomas Bardin (Paris)
Gerd Burmester (Berlin)
Frank Wollheim (Lund)
Tony Woolf (Truro)

Methodological adviser

Anke Van Gestel (Nijmegen)

Editorial board

Paul Bacon (Birmingham)	Blaž Rozman (Ljubljana)
Wim van den Berg (Nijmegen)	Hendrik Schulze-Koops (Erlangen)
Maarten Boers (Amsterdam)	Josef Smolen (Vienna)
Barry Bresnihan (Dublin)	Alex So (Lausanne)
Maurizio Cutolo (Genova)	Deborah Symmons (Manchester)
Maxime Dougados (Paris)	Auli Toivanen (Turku)
Gary Firestein (San Diego)	Alan Tyndall (Basle)
Wolfgang Gross (Lubeck)	A Tzioufas (Athens)
Mieke Hazes (Leiden)	Jiří Vencovsky (Praag)
Gabriel Herrero-Beaumont (Madrid)	Michael Weisman (Los Angeles)
Marc Hochberg (Baltimore)	Patricia Woo (London)
Christian Jorgensen (Montpellier)	Michael Yaron (Tel Aviv)
Tore Kvien (Oslo)	Hasan Yazici (Istanbul)
Marjatta Leirisalo-Repo (Helsinki)	Editor, BMJ
Frank Luyten (Leuven)	

Advisory committee

Bernard Amor (Paris)	Stefan Lohmander (Lund)
Stefano Bombardieri (Pisa)	Roman Lorenc (Warsaw)
Ferdinand Breedveld (Leiden)	R Maini (London)
Leslie Crofford (Ann Arbor)	Emilio Martin-Mola (Madrid)
Jean-Michel Dayer (Geneva)	Haralampus Moutsopoulos (Athens)
Marie Christine de Vernejoul (Paris)	James O'Dell (Omaha)
Michael Doherty (Nottingham)	Karel Pavelka (Prague)
John Edmonds (Sydney)	Josef Rovinsky (Piestany)
Paul Emery (Leeds)	Yehuda Shoenfeld (Tel-Hashomer)
Öystein Förre (Oslo)	Walther van Venrooij (Nijmegen)
Daniel Furst (Seattle)	Eric Veys (Gent)
Steffen Gay (Zurich)	Thomas Vischer (Geneva)
Joachim Kalden (Erlangen)	Allan Wiik (Copenhagen)
Edward Keystone (Toronto)	Frank Wollheim (Lund)
Lars Klareskog (Stockholm)	
Peter Lipsky (Bethesda)	

Instructions to authors

Full instructions are available online at www.annrheumdis.com/misc/ifora.shtml
If you do not have web access please contact the editorial office:
Editor: Annals of the Rheumatic Diseases
University Medical Centre Nijmegen
Department of Rheumatology
PO BOX 9101
6500 HB Nijmegen
Netherlands
Telephone +31 24 361 9851
Fax +31 24 361 9850
Email: annrheumdis.edoff@worldonline.nl

Subscription information

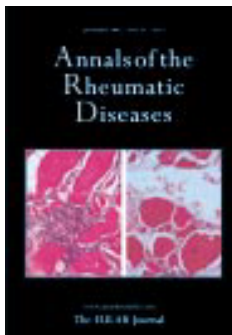
See inside back cover

Copyright

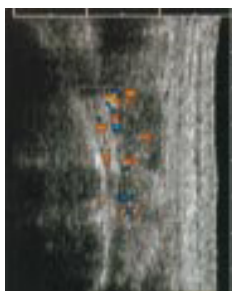
© 2002 *Annals of the Rheumatic Diseases*. All rights reserved; no part of this publication may be reproduced, stored in a retrieval system, or transmitted in any form or by any means, electronic, mechanical, photocopying, recording, or otherwise without the prior permission of *Annals of the Rheumatic Diseases*

Authors are required to grant *Annals of the Rheumatic Diseases* an exclusive licence to publish; further details available online at www.annrheumdis.com/misc/ifora.shtml

- *Annals of the Rheumatic Diseases* is published by BMJ Publishing Group and printed in the UK on acid free paper by Stephens and George Magazines Limited, Merthyr Tydfil
- Periodicals postage paid, Rahway, NJ. Postmaster: send address changes to: *Annals of the Rheumatic Diseases*, c/o Mercury Airfreight International Ltd Inc, 365 Blair Road, Avenel, NJ 07001, USA



Skeletal muscle biopsy with the inflammatory infiltrate seen on the left and the marked muscle fibre damage on the right. See p 10



See p 52

Editorial

- 1 *Annals of the Rheumatic Diseases* redesign
L van de Putte

Leaders

- 1 Steroids cause osteoporosis S Paget
- 3 Mesenchymal precursor cells M Corr, N J Zvaifler

Hypothesis

- 6 Could inflammatory arthritis be triggered by progenitor cells in the joints? C Jorgensen, D Noel, G Gross

Lesson of the month

- 10 A case of weak muscles N Sofat, M Pitcher, A Price, J N El-Jabbour, C S Higgins

Extended reports

- 13 Insoluble and soluble immune complexes activate neutrophils by distinct activation mechanisms: changes in functional responses induced by priming with cytokines G Fossati, R C Bucknall, S W Edwards
- 20 The rheumatoid arthritis articular damage score: first steps in developing a clinical index of long term damage in RA T R Zijlstra, H J Bernelot Moens, M A S Bukhari
- 24 Influence of elastic bandage on knee pain, proprioception, and postural sway in subjects with knee osteoarthritis B S Hassan, S Mockett, M Doherty
- 29 Familial systemic lupus erythematosus: the role of genetic and environmental factors G E Eroglu, P F Kohler
- 32 Prevalence of long term steroid treatment and the frequency of decision making to prevent steroid induced osteoporosis in daily clinical practice B Gudbjornsson, U I Juliusson, F V Gudjonsson
- 37 Cyclosporin A and intravenous immunoglobulin treatment in polymyositis/dermatomyositis M G Danieli, G Malcangi, C Palmieri, F Logullo, A Salvi, M Piani, G Danieli
- 42 Screening for amyloid in subcutaneous fat tissue of Egyptian patients with rheumatoid arthritis: clinical and laboratory characteristics T M El Mansoury, B P C Hazenberg, S A El Badawy, A H Ahmed, J Bijzet, P C Limburg, M H van Rijswijk
- 48 Heat shock protein 70 gene polymorphisms in Mexican patients with spondyloarthropathies G Vargas-Alarcón, J D Londoño, G Hernández-Pacheco, R Gamboa, E Castillo, C Pacheco-Tena, M H Cardiel, J Granados, R Burgos-Vargas

Concise reports

- 52 Imaging of tophaceous gout: computed tomography provides specific images compared with magnetic resonance imaging and ultrasonography *J C Gerster, M Landry, L Dufresne, J Y Meuwly*
- 55 High resolution ultrasound detects a decrease in pannus vascularisation of small finger joints in patients with rheumatoid arthritis receiving treatment with soluble tumour necrosis factor α receptor (etanercept) *M Hau, C Kneitz, H-P Tony, M Keberle, R Jahns, M Jenett*
- 59 Intravenous immunoglobulins control scleromyxoedema *A Righi, F Schiavon, S Jablonska, A Doria, M Blasczyk, R Rondinone, S Todesco, M Matucci Cerinic*
- 62 Communication between Dutch rheumatologists and occupational physicians in the occupational rehabilitation of patients with rheumatic diseases *P D M de Buck, R J van Amstel, P C Buijs, J H W Maasen, F J H van Dijk, J M W Hazes, T P M Vliet Vlieland*
- 66 Can intervention modify adverse lifestyle variables in a rheumatoid population? Results of a pilot study *M-M Gordon, E A Thomson, R Madhok, H A Capell*
- 70 Autoimmune thyroid disease in systemic lupus erythematosus *D Pyne, D A Isenberg*
- 73 Usefulness of bone densitometry in postmenopausal women with clinically diagnosed vertebral fractures *J M Nolla, C Gómez-Vaquero, J Fiter, D Roig Vilaseca, L Mateo, A Rozadilla, M Romera, J Valverde, D Roig Escofet*
- 76 Serum nitrate and nitrite levels in patients with rheumatoid arthritis, ankylosing spondylitis, and osteoarthritis *Y Ersoy, E Özerol, Ö Baysal, I Temel, R S MacWalter, Ü Meral, Z E Altay*
- 79 Acute phase response in familial Mediterranean fever *C Korkmaz, H Özdoğan, Ö Kasapçopur, H Yazici*
- 82 Rheumatological complications associated with the use of indinavir and other protease inhibitors *E Florence, W Schrooten, K Verdonck, C Dreezen, R Colebunders*

Matters arising

- 85 Antiphospholipid antibodies and rheumatoid arthritis *A Ambrozic, B Bozic, M Hojnik, T Kveder, B Rozman, M O Jauberteau, C Bonnet*
- 86 Methotrexate and postoperative complications *A Wluka, R Buchbinder, S Hall, G Littlejohn, D M Grennan, J Gray*

Letters

- 87 Proximal myopathy and bone pain as the presenting features of coeliac disease *M Wong, J Scally, K Watson, J Best*
- 88 Plasma and peripheral blood mononuclear cells levels of Zn and Cu among Indian patients with RA *A Wanchu, A Sud, P Bamberg, R Prasad, V Kumar*
- 88 Essential cryoglobulinaemia (type 1) in three patients characterised by Raynaud's phenomenon, arthralgia-arthritis, and skin lesions *J G den Hollander, A J G Swaak*
- 89 Cryoglobulinaemic vasculitis as presenting manifestation of infective endocarditis *L La Civita, P Fadda, I Olivieri, C Ferri*
- 90 ANCA antibodies in Graves' disease *M Gumà, A Olivé, M Juan, I Salinas*
- 91 Lupus relapse after prostaglandin E₁ administration: activation of a cytokine cascade? *M de la Torre, R Alcázar, D Sánchez de la Nieta, J Nieto, I Ferreras, J M Urrea*
- 92 Osteocalcin: a marker of disease activity in ankylosing spondylitis? *A Falkenbach, M Herold*
- 92 Takayasu arteritis *S Sebnem Kilic, Ö Bostan, E Çil*
- 93 Recurrent orbital pain and diplopia in a 12 year old boy *F Falcini, G Simonini, M Resti, R Cimaz*
- 94 Sciatica or spinal lymphoma *F Morcos, E Smith*
- 94 Unusual complications in the Churg-Strauss syndrome *C Alvarez, V Asensi, A Rodríguez-Guardado, L Casado, P Ablanado, C Alvarez-Navascués*
- 95 Notice
- 95 Forthcoming events



See p 59