

elasticity was attached to the transducer during the elastosonography. The inlet of the carpal tunnel at the scaphoidpisiform level and the proximal portion of the carpal tunnel inlet were scanned in a transverse plane. The cross-sectional area (CSA) and the elasticity of the median nerve, which was measured as the acoustic coupler/median nerve strain ratio, were evaluated. The measurements were repeated two times, and the average strain ratio was used for analysis.

**Results:** We analyzed 342 hands in 177 RA patients (139 female, mean age: 63.5±11.6 years) and 158 hands in 81 non-RA (68 female, mean age: 71.5±14 years) finally. There were no significant differences in the cross-sectional area of median nerve (left: 8.9 vs 8.7 mm<sup>2</sup>, p=0.91, right: 8.2 vs 8.4 mm<sup>2</sup>, p=0.62) or the circumference of median nerve (left: 13.1 vs 13.4 mm, p=0.41, right: 13.7 vs 13.7 mm, p=0.95) within carpal tunnel between RA group and non-RA group. Strain ratio within carpal tunnel in RA group was higher than that of non-RA group (left: 2.6 vs 2.1, p=0.002, right: 2.7 vs 2.2, p=0.003). There were no significant differences in the cross-sectional area of median nerve (left: 7.5 vs 8.1 mm<sup>2</sup>, p=0.07, right: 8.8 vs 8.3 mm<sup>2</sup>, p=0.6), the circumference of median nerve (left: 13.1 vs 13.5 mm, p=0.3, right: 13.7 vs 13.9 mm, p=0.71) and strain ratio (left: 2.1 vs 2.0, p=0.88, right: 2.3 vs 2.1, p=0.01) at the entrance of the carpal tunnel between RA group and non-RA group.

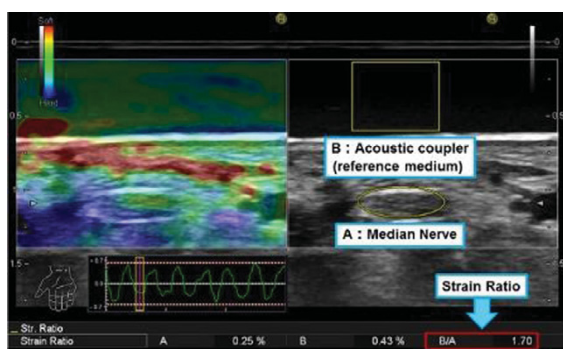


Figure: The images of acoustic coupler /median nerve strain ratio.

**Conclusions:** Real-time Elastosonography showed the stiffness of the median nerve with RA patients without any symptoms of CTS was higher than controls. It suggests that inflammation of flexor tenosynovitis and wrist joint may generate fibrotic change of median nerve in patients with RA.

#### References:

[1] Miyamoto H, Halpern EJ, Kastlunger M, et al. Carpal tunnel syndrome: diagnosis by means of median nerve elasticity—improved diagnostic accuracy of US with sonoelastography. *Radiology*. 2014;270:481–6.

**Disclosure of Interest:** None declared

**DOI:** 10.1136/annrheumdis-2017-eular.1632

### SAT0659 COMPARISON BETWEEN EIGHT DIFFERENT ULTRASONOGRAPHIC SCORES FOR HAND ASSESSMENT IN RHEUMATOID ARTHRITIS -A CROSS-SECTIONAL STUDY

S. Hussain<sup>1,2</sup>, P. Sivakumaran<sup>1,2</sup>, L. Attipoe<sup>2</sup>, C. Ciurtin<sup>2</sup>. <sup>1</sup>University College London Medical School; <sup>2</sup>Department of Rheumatology, University College London Hospitals NHS Foundation Trust, London, United Kingdom

**Background:** Rheumatoid arthritis (RA) is a chronic inflammatory condition associated with well-recognised inflammatory joint features, which are amenable to ultrasound (US) examination. The implementation of US scoring systems in addition to clinical examination could help standardise the way RA is monitored; however, due to variation in local availability of US and sonographer expertise, different scoring systems have been used in clinical practice (1). Despite significant research progress in supporting the role of US in RA, there is no consensus as to which scoring system is most useful.

**Objectives:** To assess whether simplified US protocols for hand examination correlate significantly with a 22 hand joint US score in patients with established rheumatoid arthritis, and correlate the US examination with the disease activity score (DAS-28 score).

**Methods:** This is a cross-sectional study of 224 RA patients stratified based on their DAS-28 scores and assessed using eight preselected US examination protocols including 22, 18, 16, 14, 10, 8 and two different combinations of 4 joints, respectively. Student T, Mann-Whitney U and Kuskal-Wallis tests were employed for analysis of clinical, laboratory and US parameters in the RA patient groups (P<0.05 was considered significant). Spearman's coefficients were used to correlate permutations of pairs of US scores, and US and DAS-28 scores.

**Results:** We found a significant difference between different US hand scores and their ability to detect the presence of active and chronic inflammation in RA patients. The DAS-28 scores correlated very well (R=0.89–1, P<0.05) with the total Power Doppler (PD) scores generated by all US protocols irrespective of patients' disease activity. Simplified US scores missed information on presence of erosions (P<0.05), but were equivalent to the extensive 22 joint score in appreciating the amount of chronic and active inflammation compared to the extensive 22 joint score (P=0.15, P=0.11, respectively).

**Conclusions:** This study showed that preselected simplified US scores could be used in clinical practice to appreciate reliably the disease activity in patients with established RA; however they are less reliable in appreciating the disease burden when compared with an extended protocol for US examination of 22 hand joints. All the simplified US scores correlated very well with DAS-28 scores.

#### References:

[1] Mandl, P., et al., A systematic literature review analysis of ultrasound joint count and scoring systems to assess synovitis in rheumatoid arthritis according to the OMERACT filter. *J Rheumatol*, 2011. 38(9): p. 2055–62.

**Acknowledgements:** S. Hussain and P. Sivakumaran contributed equally to the study.

**Disclosure of Interest:** None declared

**DOI:** 10.1136/annrheumdis-2017-eular.2722

### SAT0660 SAFETY, FEASIBILITY AND TOLERABILITY OF PERFORMING CONSECUTIVE MINIMAL INVASIVE ULTRASOUND-GUIDED SYNOVIAL BIOPSY PROCEDURES ON THE SAME WRIST IN A PROSPECTIVE RHEUMATOID ARTHRITIS STUDY

S.A. Just<sup>1</sup>, C. Nielsen<sup>2</sup>, E.K. Hejbøl<sup>3</sup>, H.D. Schrøder<sup>3</sup>, I.M.J. Hansen<sup>4</sup>, T. Barington<sup>2</sup>, H.M. Lindegaard<sup>1</sup>. <sup>1</sup>Rheumatology; <sup>2</sup>Clinical Immunology; <sup>3</sup>Clinical Pathology, Odense University Hospital, Odense; <sup>4</sup>Medicine, Svendborg Hospital, Odense University Hospital, Svendborg, Denmark

**Background:** Studies on synovial tissue retrieved using the minimal invasive ultrasound-guided synovial biopsy (USG-SB) method have led to major advances in the understanding of Rheumatoid Arthritis (RA). The method is now used in multicenter RA studies and recommended in the phases of RA drug development. Only to biopsy disease active joints at start and end of a study, can lead to biopsies being retrieved from different joints. This can make interpretation of the changes in the synovial tissue and gene-expression profile difficult, as synovial histology patterns can vary between joints. We here present an approach where we biopsied the wrist with disease activity at presentation and the same wrist after six month of disease duration. We use the wrist, as it is the joint most commonly involved in the upper extremity in RA. The joint is easily accessible for USG-SB and therefore ideal to use to follow disease activity/treatment response/biomarker change in prospective RA studies.

**Objectives:** To assess the safety, tolerability and feasibility to perform repeated synovial biopsies from the same wrist, using a minimally invasive USG-SB technique in patients suffering from RA.

**Methods:** Patients with newly diagnosed untreated RA or longstanding (>5 years) RA and at least one clinically swollen wrist, underwent x-ray, magnetic resonance imaging (MRI) and ultrasound examination of the affected wrist and hand on the day of the biopsy. This was repeated 6 months later, where the second biopsy from the same wrist was taken. EULAR guidelines for RA treatment were followed in the 6 months between biopsies. Patient-reported outcomes (PRO) included a standard questionnaire given to all patients on the day of the biopsy as well as 2 weeks after the biopsy. Tolerability and the patient-reported willingness to repeat the procedure was assessed using the 5-point Likert scale.

**Results:** 38 RA patients (22 early, 16 longstanding) underwent USG-SB procedure at inclusion and after 6 months. One patient was excluded and did not have second biopsy due to diagnosis of CPPD. All patients have undergone first biopsy and at present time and 50% second biopsy. At the EULAR congress complete data will be presented. At present time, at both first and second biopsy no worsening in PRO of the biopsied joints was reported 2w after the biopsy, as compared before the biopsy. No infection, hemorrhage, nerve or tendon damage has currently been observed. One patient developed a tenosynovitis after biopsy (the CPPD patient), successfully treated with glucocorticoid injection. 10% of the patients were somewhat or very unlikely to have another biopsy procedure after the first procedure, and 6% after the second. All included RA patients accepted to have a second biopsy. Detailed data on differences in tolerability between early untreated RA patients versus patients with longstanding RA, will be presented at the conference.

**Conclusions:** To our knowledge, we are the first, to demonstrate that retrieving synovial tissue using the USG-SB method on the same wrist, at start and end of a prospective RA study, is safe and well tolerated.

**Disclosure of Interest:** None declared

**DOI:** 10.1136/annrheumdis-2017-eular.2453

### SAT0661 FINGER JOINT CARTILAGE THICKNESS EVALUATED BY ULTRASOUND IN PATIENTS WITH RHEUMATOID ARTHRITIS (RA)

T. Ogura, A. Hirata, N. Hayashi, H. Ito, S. Takenaka, Y. Fujisawa, K. Mizushima, T. Katagiri, R. Kujime, M. Imamura, N. Yamashita, H. Kameda. *Toho University Ohashi Medical Center, Tokyo, Japan*

**Background:** Joint destruction in RA includes both bone and cartilage lesions. By X-ray examination, cartilage destruction is evaluated as a joint space narrowing (JSN). However, joint space narrowing is not a direct evaluation of cartilage.

**Objectives:** We aimed to examine the finger joint cartilage thickness (CT) by ultrasound (US) imaging and clarify its clinical significance in patients with RA.

**Methods:** We enrolled 121 RA patients in low disease activity or clinical remission