

# ARD

Annals of the Rheumatic Diseases  
The EULAR Journal

## Editor

Leo van de Putte (Nijmegen)

## Associate editors

Thomas Bardin (Paris)  
Johannes Bijlsma (Utrecht)  
Gerd Burmester (Berlin)  
Bevrah Hahn (Los Angeles)  
Frank Wollheim (Lund)  
Anthony Woolf (Truro)

## Methodological adviser

Paco Welsing (Nijmegen)

## Editorial board

Martin Aringer (Vienna)  
Paul Bacon (Birmingham)  
Francis Berenbaum (Paris)  
Barry Bresnihan (Dublin)  
Hillary Capell (Glasgow)  
Maurizio Cutolo (Genova)  
Philippe Goupille (Tours)  
Ellen Gravallese (Boston)  
Francis Guillemain (Nancy)  
Gary Firestein  
(La Jolla San Diego)  
Gabriel Herrero-Beaumont  
(Madrid)  
Frederic Houssiau (Brussels)  
Tom Huizinga (Leiden)  
Christian Jorgensen  
(Montpellier)  
George Kollias (Athens)  
Tore Kvien (Oslo)  
Marjatta Leirisalo-Repo  
(Lund)  
Frank Luijten (Leuven)  
Hanns-Martin Lorenz  
(Heidelberg)

Marco Matucci Cerinic  
(Florence)  
Kusuki Nishioka (Kanagawa)  
Seza Özen (Ankara)  
Thomas Pap (Magdeburg)  
Eliseo Pascual Gómez  
(Alicante)  
Lars Rönnblom (Uppsala)  
Blaž Rozman (Ljubljana)  
Georg Schett (Vienna)  
José Da Silva (Coimbra)  
Hendrik Schulze-Koops  
(Erlangen)  
Alex So (Lausanne)  
Tuulikki Sokka (Nashville)  
Paul-Peter Tak (Amsterdam)  
Alan Tyndall (Basel)  
Athanasios Tzioufas (Athens)  
Jiří Vencovsky (Praag)  
Michael Ward (Bethesda)  
Patricia Woo (London)  
Michael Yaron (Tel Aviv)  
Hasan Yazici (Istanbul)  
Editor, *BMJ*

## Advisory committee

Wim vd Berg (Nijmegen)  
Stefano Bombardieri (Pisa)  
Ferdinand Breedveld  
(Leiden)  
Leslie Crofford (Michigan)  
Jean-Michel Dayer (Geneva)  
Mike Doherty (Nottingham)  
Maxime Dougados (Paris)  
John Edmonds (Sydney)  
Paul Emery (Leeds)  
Daniel Furst (Seattle)  
Steffen Gay (Zurich)  
Joachim Kalden (Erlangen)  
Edward Keystone (Toronto)  
Lars Klareskog (Stockholm)

Peter Lipsky (Dallas)  
Stefan Lohmander (Lund)  
Ravinder Maini (London)  
Emilio Martin Mola (Madrid)  
Haralampos Moutsopoulos  
(Athens)  
James O'Dell (Omaha)  
Karel Pavelka (Prague)  
Josef Rovinsky (Piestany)  
Yehuda Shoenfeld  
(Tel-Hashomer)  
Josef Smolen (Vienna)  
Walther van Venrooy  
(Nijmegen)  
Eric Veys (Gent)  
Allan Wiik (Denmark)

## Instructions to authors

Full instructions are available online at  
[www.annrheumdis.com/misc/fora.shtml](http://www.annrheumdis.com/misc/fora.shtml)  
If you do not have web access please contact the editorial office:  
Email: [annrheumdis.edoff@worldonline.nl](mailto:annrheumdis.edoff@worldonline.nl)

## Subscription information

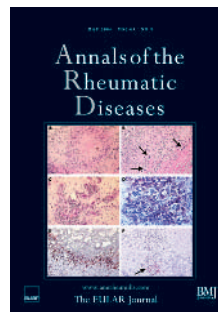
See p iv

## Copyright

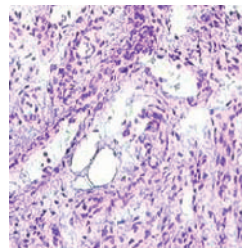
© 2004 BMJ Publishing Group and European League Against Rheumatism. All rights reserved; no part of this publication may be reproduced, stored in a retrieval system, or transmitted in any form or by any means, electronic, mechanical, photocopying, recording, or otherwise without the prior permission of *Annals of the Rheumatic Diseases*

Authors are required to grant *Annals of the Rheumatic Diseases* an exclusive licence to publish; further details available online at [www.annrheumdis.com/misc/fora.shtml](http://www.annrheumdis.com/misc/fora.shtml)

• *Annals of the Rheumatic Diseases* is published by BMJ Publishing Group, typeset by The Charlesworth Group, and printed in the UK on acid-free paper by Unwin Brothers, Woking  
• Periodicals postage paid, Rahway, NJ. Postmaster: send address changes to: *Annals of the Rheumatic Diseases*, c/o Mercury Airfreight International Ltd, 365 Blair Road, Avenel, NJ 07001, USA



Immunohistochemical assessment of rheumatoid nodules after infliximab treatment. See p 489



See p 498

## contents ARD

Volume 63 Number 5 May 2004

## Leaders

- 471 How to diagnose axial spondyloarthritis early *N Barkham, H Marzo-Ortega, D McGonagle, P Emery*
- 473 MRI of the wrist in early rheumatoid arthritis  
*C G Peterfy*

## Review

- 478 Intra-articular treatments in osteoarthritis: from the symptomatic to the structure modifying  
*L Gossec, M Dougados*

## Extended reports

- 483 T cells, fibroblast-like synoviocytes, and granzyme B<sup>+</sup> cytotoxic cells are associated with joint damage in patients with recent onset rheumatoid arthritis *M C Kraan, J J Haringman, H Weedon, E C Barg, M D Smith, M J Ahern, T J M Smeets, F C Breedveld, P P Tak*
- 489 Tumour necrosis factor  $\alpha$  independent disease mechanisms in rheumatoid arthritis: a histopathological study on the effect of infliximab on rheumatoid nodules *D Baeten, F De Keyser, E M Veys, Y Theate, F A Houssiau, P Durez*
- 494 Similar prediction of mortality by the health assessment questionnaire in patients with rheumatoid arthritis and the general population *T Sokka, A Häkkinen, E Krishnan, P Hannonen*
- 498 Technical validation of cDNA based microarray as screening technique to identify candidate genes in synovial tissue biopsy specimens from patients with spondyloarthritis *M Rihl, D Baeten, N Seta, J Gu, F De Keyser, E M Veys, J G Kuipers, H Zeidler, D T Y Yu*
- 508 Efficacy and safety of adalimumab as monotherapy in patients with rheumatoid arthritis for whom previous disease modifying antirheumatic drug treatment has failed *L B A van de Putte, C Atkins, M Malaise, J Sany, A S Russell, P L C M van Riel, L Settas, J W Bijlsma, S Todesco, M Dougados, P Nash, P Emery, N Walter, M Kaul, S Fischkoff, H Kupper*
- 517 Global core recommendations for a musculoskeletal undergraduate curriculum  
*A D Woolf, N E Walsh, K Åkesson*
- 525 EULAR randomised controlled trial of pulse cyclophosphamide and methylprednisolone versus continuous cyclophosphamide and prednisolone followed by azathioprine and prednisolone in lupus nephritis *C-S Yee, C Gordon, C Dostal, P Petera, J Dandoni, B Griffiths, B Rozman, D A Isenberg, G Sturfelt, O Nived, J H Turney, A Venalis, D Adu, J S Smolen, P Emery*
- 530 Which patients with ankylosing spondylitis should be treated with tumour necrosis factor inhibiting therapy? A survey among Dutch rheumatologists *R Landewé, B Rump, D van der Heijde, S van der Linden*
- 535 How to diagnose axial spondyloarthritis early  
*M Rudwaleit, D van der Heijde, M A Khan, J Braun, J Sieper*

**NEW**  
**ONLINE**  
**SUBMISSION**  
**GO TO**  
**WEBSITE**  
**TO SUBMIT YOUR**  
**MANUSCRIPT**

- 544 Insulin-like growth factor I gene promoter polymorphism, collagen type II  $\alpha 1$  (COL2A1) gene, and the prevalence of radiographic osteoarthritis: the Rotterdam Study *G Zhai, F Rivadeneira, J J Houwing-Duistermaat, I Meulenbelt, C Bijkerk, A Hofman, J B J van Meurs, A G Uitterlinden, H A P Pols, P E Slagboom, C M van Duijn*
- 549 Use of complementary medicines for osteoarthritis—a prospective study *J Zochling, L M March, H Lapsley, M Cross, K Tribe, P Brooks*
- 555 MRI of the wrist in early rheumatoid arthritis can be used to predict functional outcome at 6 years *N Benton, N Stewart, J Crabbe, E Robinson, S Yeoman, F M McQueen*
- 562 A multidisciplinary job retention vocational rehabilitation programme for patients with chronic rheumatic diseases: patients' and occupational physicians' satisfaction *P D M de Buck, J Breedveld, F J van der Giesen, T P M Vliet Vlieland*
- 569 Increased transendothelial migration of scleroderma lymphocytes *G H Stummvoll, M Aringer, J Grisar, C W Steiner, J S Smolen, R Knobler, W B Graninger*
- 575 Autoimmune thyroiditis and anti-thyroid antibodies in primary Sjögren's syndrome: a case-control study *R Tunc, M S Gonen, O Acbay, V Hamuryudan, H Yazici*
- 578 Autoimmune manifestations in human myelodysplasia: a positive correlation with interferon regulatory factor-1 (IRF-1) expression *S Giannouli, D Tzoanopoulos, K Ritis, G Kartalis, H M Moutsopoulos, M Voulgarelis*
- 583 Serum concentrations of soluble P-selectin glycoprotein ligand-1 are increased in patients with systemic sclerosis: association with lower frequency of pulmonary fibrosis *K Yanaba, K Takehara, S Sato*

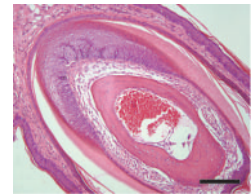
### Concise reports

- 588 Steroids, non-steroidal anti-inflammatory drugs, and sigmoid diverticular abscess perforation in rheumatic conditions *S Mpofu, C M A Mpofu, D Hutchinson, A E Maier, S R Dodd, R J Moots*
- 591 Prevalence and impact of arthritis among nursing home residents *J E Abell, J M Hootman, C G Helmick*
- 595 Ankylosing enthesitis, dactylitis, and onychopostitis in male DBA/1 mice: a model of psoriatic arthritis *R J U Lories, P Matthys, K de Vlam, I Derese, F P Luyten*

### Letters

- 599 Activation dependent apoptosis of peripheral blood mononuclear cells from patients

- with rheumatoid arthritis treated with methotrexate *J Swierkot, R Miedzybrodzki, S Szymaniec, J Szechinski*
- 600 Platelet and endothelial activation are requisites for the development of antiphospholipid syndrome *E del Río García, C Rodríguez, J Rodríguez-Martorell, A Serrano, J A Girón-González*
- 602 Disease modifying treatment and elective surgery in rheumatoid arthritis: the need for more data *A Jain, R Maini, J Nanchahal*
- 603 Shrinking central nervous system in systemic lupus erythematosus *C C Mok, A Mak, E Y K Tsui*
- 605 Usefulness of glycosylated ferritin in atypical presentations of adult onset Still's disease *M A Hamidou, M Denis, S Barbarot, D Boutoille, C Belizna, G Le Moël*
- 606 High grade heart block in association with SLE *C S Edwards, R Mootoo, A Bhanji*



See p 595



See p 603

### Matters arising

- 607 Treatment of shoulder pain *A N Bamji, E M Hay*
- 607 Do etanercept-naïve patients with rheumatoid arthritis respond better to infliximab than patients for whom etanercept has failed? *Y Yazici, D Erkan, R F van Vollenhoven*
- 608 Seronegative antiphospholipid syndrome *A S M Jawad, G Hughes, M Khamashta*
- 608 Ibandronate and prevention of postmenopausal osteoporosis *M Maravic, P Landais, J A Stakkestad*
- 610 Atherosclerosis in primary antiphospholipid syndrome *P R J Ames, K Sokoll, M Weston, A Margarita, V Brancaccio, L J Jara, G Medina, O Vera-Lastra, M Fuentes*
- 611 Inflammatory rheumatic disorders *B Pal, F Guillemain, A Saraux, P Guggenbuhl, J-M Behier*
- 611 Mycobacterial knee infection in patients with idiopathic inflammatory myositis *I Haq, D Isenberg, R Callaghan*
- 611 Increased risk of cancer in patients with scleroderma: no risk in patients with morphoea? *U Wollina, C L Hill*

612 Notice

612 Forthcoming events

### Echoes

- 548 Public understanding and acceptance of randomisation
- 594 Laboratory imposed restrictions on ANCA testing



**63 (5)**

*Ann Rheum Dis* 2004 63: 471-612

---

Updated information and services can be found at:  
<http://ard.bmj.com/content/63/5>

---

*These include:*

**Email alerting  
service**

Receive free email alerts when new articles cite this article. Sign up in the box at the top right corner of the online article.

---

**Notes**

---

To request permissions go to:  
<http://group.bmj.com/group/rights-licensing/permissions>

To order reprints go to:  
<http://journals.bmj.com/cgi/reprintform>

To subscribe to BMJ go to:  
<http://group.bmj.com/subscribe/>