

## IN RHEUMATOID ARTHRITIS

objective evidence  
of relief



using

# DECADRON

DEXAMETHASONE

Regd.

Physicians find that they obtain better results in many cases of rheumatoid arthritis by using 'Decadron'.

Joint swelling and tenderness, pain on movement, morning stiffness, all are reduced, often within 24 hours.

More patients resume useful activity with the aid of 'Decadron', even some poorly controlled by other corticosteroids.

Before prescribing 'Decadron', the physician should consult the detailed information given in the package leaflet or in descriptive literature which is available on request.

Made in England by



**MERCK SHARP & DOHME LIMITED, HODDESDON HERTS**



Rheumatologists believe that adrenal stimulation with A.C.T.H. is preferable to the use of corticosteroids in rheumatoid arthritis. CORTROPHIN 'ZN' is an ideal preparation for such use either in hospitals or by patients in their own home.



A.C.T.H.

# CORTROPHIN 'ZN'

LONG ACTING

- 
 Duration of therapeutic effect up to 48 hours, according to dose.
- 
 A fine suspension ready for instant use which will pass through a No. 20 needle without warming.

For intramuscular or subcutaneous use in 5 ml. vials of 20 i.u. or 40 i.u. per ml.



**ORGANON LABORATORIES LIMITED**  
 BRETTENHAM HOUSE, LANCASTER PLACE, LONDON, W.C.2  
 Telephone: TEMple Bar 6785/6/7, 0251/2/3, 1942/3.      Telegrams: Menformon, Rand, London

'Palaprin' is a unique new chemical—aloxiprin—which presents an entirely new approach to salicylate therapy because it is hardly affected by the acid gastric juice—but releases its analgesic and anti-inflammatory properties in the alkaline intestinal medium. This by-pass action of 'Palaprin' dramatically reduces the gastric irritation which so often precludes the prolonged use of aspirin even in the buffered or 'soluble' forms. 'Palaprin', with its unique by-pass action, gives you unprecedented freedom of dosage.

FULL SALICYLATE ACTION  
FOR RHEUMATIC CONDITIONS

'PALAPRIN'

brand of aloxiprin

INDICATIONS:

Rheumatic conditions, chronic arthritis, myalgias and all conditions where an effective analgesic and anti-inflammatory agent is required.

COMPOSITION:

Each tablet contains 400 mg. 'Palaprin' brand of aloxiprin.\*

BASIC N.H.S. COST:

30 tablets . . . 4/6d. (- P.T.)

BY-PASSES



BRITISH SCHERING LTD  
Slough · Bucks · England

\*Palaprin is a registered trade mark

\*Patents pending



# Geigy

# Butazolidin<sup>®</sup>

The unique properties of Butazolidin - analgesic, anti-inflammatory and antipyretic - ensure prompt response, rapid relief from pain and sustained improvement in

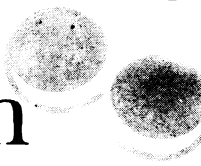
Rheumatoid arthritis  
Osteoarthritis  
Ankylosing spondylitis  
Superficial phlebitis  
Acute gout

Geigy Pharmaceutical Company Limited,  
Wythenshawe, Manchester 23.

PH 205

Butazolidin (Phenylbutazone B.P.C., B.N.F.)  
available in tablets of 100 mg and 200 mg  
1,2-Diphenyl-3,5-dioxo-4-n-butyl-pyrazolidine.

one  
good  
reference  
is  
worth  
a  
thousand  
words



## Medrone tablets

*when the oral route is indicated*

'6 $\alpha$ -Methylprednisolone in Rheumatoid Arthritis, Experience with 101 Cases.'

*Brit. J. clin. Pract.* (1961): **15**:691.

*Brit. med. J.* (1960): ii;738.

'Corticosteroid Therapy in Rheumatoid Arthritis.'

*J. Amer. med. Ass.*, (1959): **170**:1253.

'The Treatment of Bronchial Asthma with Medrol.'

*Ann. Allergy* (1959): **17**:402.

'Comparative Incidence of Side Reactions of Methyl-Prednisolone and Prednisolone in Allergic Patients: A Study of 363 Patients.'

*Amer. Practit.*, (1959): **10**:813.

'Methylprednisolone (Medrol) in the Treatment of Systemic Lupus Erythematosus.'

*J. Amer. med. Ass.* (1959): **170**:1537.

'Alopecia.' *Med. Tms (N. Y.)* (1959): **87**:225.

'Treatment of Nephrosis with Methylprednisolone.'

*N. Y. St. J. Med.* (1960): **60**:3804.

'An Effective Treatment of Refractory Ascites in Cirrhosis of the Liver.'

*Arch. Intern. Med.* (1960): **105**:594.

## Depo-Medrone

*when parenteral therapy is preferred*

'The Newer Corticosteroids for Local Injection.'

*Ann. phys. med.* (1961): **6**:178.

*Lancet* (1960): ii; 437.

'Long-acting Intramuscular Steroid. Depot-Methylprednisolone for Subconjunctival and Retrobulbar Injections.'

*Lancet* (1961): ii;344.

'The Use of Methylprednisolone in Seasonal Allergy.'

*Canad. med. Ass. J.* (1961): **85**:480.

'Methylprednisolone Acetate: A Single Preparation Suitable for Both Intra-Articular and Systemic Use.'

*N. Y. St. J. Med.* (1961): **61**:552.

'Treatment of Dermatoses with Parenteral Methylprednisolone Acetate.'

*Clin. Med.* (1961): **8**:285.

**Medrone**—supplied as 4 mg. tablets of methylprednisolone in bottles of 30 and 100.

**Depo-Medrone**—supplied as a sterile aqueous suspension (40 mg./ml.) in 1 ml., 2 ml. and 5 ml. vials.

REGISTERED TRADEMARK. MEDRONE • TRADEMARKS. DEPO A/D/ DEPO MEDRONE GB 1614/62

UPJOHN LIMITED • CRAWLEY • SUSSEX

**Upjohn**

*foremost in corticosteroid research*



**Rapid Slide Test  
for  
Antinucleoprotein  
Factors Associated  
with**

**LE-TEST** has been designed to detect antibody to desoxyribonucleoproteins:

**SIMPLICITY** — one drop of patient's serum is mixed with one drop of ready prepared reagent on a glass slide.

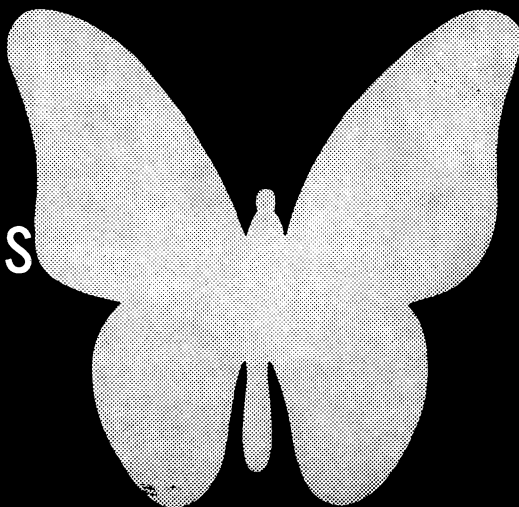
**SPEED** — results are readable within two minutes.

**CLARITY** — positive reactions are indicated by clear-cut flocculation, readily apparent to the naked eye.

**SPECIFICITY** — Latex-Nucleoprotein reagent (prepared from polystyrene latex and desoxyribonucleoprotein) reacts clearly, speedily with sera from SLE patients which contain antinucleoprotein factors.

*Detailed literature  
available on request  
from the  
Medical Department.*

**SYSTEMIC  
LUPUS  
ERYTHEMATOSUS  
LE-TEST**



**BAXTER**

**BAXTER LABORATORIES LTD.  
HIGH WYCOMBE, BUCKS.**

“ON THE WAY TO HEALTH IN THE CURE OF RHEUMATISM  
 ARTHRITIS GOUT SCIATICA and SEQUELAE OF FRACTURES”  
 GYNAECOLOGICAL AFFECTIONS—INHALATIONS and COSMETIC  
 THERAPIES



# ACQUI SPA

Piedmont

Italy

Well-known since the old Roman time

STATE CURE ESTABLISHMENTS

(Open all the year round)

Sulphurous hyperthermal Muds  
 Natural Hot-water Springs (167 F.)

CENTRE OF STUDY OF  
 RHEUMATISM

Qualified Doctors in attendance

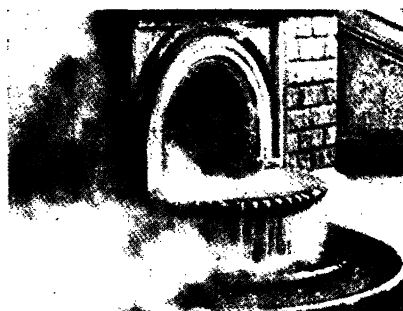
HOTELS: GRAND HOTEL NUOVE TERME (First class) open all the year  
 GRAND HOTEL & ANTICHE TERME (First class) June-September  
 HOTEL REGINA (2nd class) June-September  
 Own private Cure-Establishment in each Hotel

Park Cinemas Dancing Swimming-pool  
 Tennis-Courts Fishing Excursion

NEAREST MAIN RAILWAYS STATIONS

Milan (84 miles) - Turin (62 miles)  
 Savona and Riviera (34 miles)  
 Genoa (40 miles) or by daily Bus Services  
 to and from the above Cities.

AIRPORTS: Milan (Malpensa) Turin (Caselle)



*For further information apply to: TERME DELLO STATO ACQUI TERME*

a fresh start in corticosteroid therapy

# Betnelan

the entirely new  
anti-inflammatory steroid

Betnelan names betamethasone, an entirely new compound developed in Britain by Glaxo Laboratories Ltd. It is effective in low doses in **acute asthma, severe eczema, severe allergic urticaria, shock** and other conditions for which corticosteroids are indicated systemically.

Betnelan is devoid of salt retention activity, has negligible effect on potassium balance, causes no mental depression, has no muscle weakening effect and shows promise of clinical superiority in other respects.

Each tablet of Betnelan contains 0.5 milligram betamethasone and for short-term therapy a "2:1:½" dosage scheme is suggested. For example, 2 tablets t.i.d. for 2 days followed by 1 tablet t.i.d. for 2 days and ½ tablet t.i.d. for 2 days.

For maintenance, dosage need be no more than ½ tablet twice daily.

*The merits of betamethasone derive from its unique chemical structure formed by introducing a methyl group, (CH<sub>3</sub>), in the beta position on the molecule of 9-fluoro prednisolone. This represents more than 20 new stages of manufacturing complexity.*

...and Betnelan is inexpensive

GLAXO LABORATORIES LIMITED





# Experience tells in corticoid therapy

A RECENT CLINICAL COMPARISON OF PREDNISONE WITH PARAMETHASONE CONCLUDES—

“In a fairly large group of patients on long-term therapy there was a much higher incidence of good results on paramethasone, and the incidence of sequelae was unusually low.”

*Arch. Dermatol.* (1962) **85**, 505.

# Metilar

PARAMETHASONE ACETATE

TRADE MARK

The safer way for long-term therapy

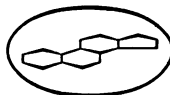
## BASIC N.H.S. COSTS

Tablets 25 and 100

1 mg. 25 4/5d. 100 15/-

2 mg. 25 7/6d. 100 25/6d.

Ph. 229



A PRODUCT OF SYNTEX CORPORATION      MADE IN GREAT BRITAIN BY IMPERIAL  
CHEMICAL INDUSTRIES LIMITED PHARMACEUTICALS DIVISION WILMSLOW CHESHIRE





**RHEUMATISM  
AND KINDRED AILMENTS**

Harrogate, the largest treatment centre in Great Britain, is actively engaged in providing all types of physical treatment in connection with the rheumatic disease and all types of physical rehabilitation. The establishment is equipped with DEEP

POOL THERAPY, medical gymnastic facilities and occupational therapy.

**HARROGATE**

*Treats both private patients under its All-Inclusive Treatment Scheme, and National Health patients. Medical enquiries as to cost, and how treatment can be obtained, will be welcomed by—The Manager, Section 1.*

**Royal Baths**  
HARROGATE

For **OVER-ACIDITY** prescribe

**VICHY CELESTINS**

WORLD-FAMOUS FRENCH SPA WATER

*Bottled as it flows from the Spring*

Holding an undisputed place in the therapeutics of rheumatism and arthritis, as well as in disorders of the digestive and urinary tract, Vichy-Celestins is invaluable to sufferers from these ailments.

*Sole Agents in the United Kingdom:*

**INGRAM & ROYLE LIMITED**

89 Worship Street, London, E.C.2  
(MEMBER OF THE SCHWEPPE GROUP)



# CALPOL



**THE SAFE  
ANALGESIC  
FOR  
PROLONGED  
ADMINISTRATION**

Calpol is a non-salicylate analgesic and antipyretic causing no adverse cardiac effects. It is rapidly absorbed and quick acting, does not cause occult bleeding, is non-constipating and suitable for children. Calpol may be given to dyspeptics for occasional or prolonged use, without any undesirable effects.

**INDICATIONS**

For relief of rheumatic pain, dysmenorrhoea, headache, coryza, influenzal states, tonsillitis and other pyrexial conditions.

**FORMULA**

Each tablet contains 0.5 g. Paracetamol.

**DOSE**

Adults : 1 or two tablets repeated after 3 or 4 hours if necessary.

Children : 2-6 years of age  $\frac{1}{4}$ - $\frac{1}{2}$  tablet.

7-12 years of age  $\frac{1}{2}$ -1 tablet.

**BASIC N.H.S. COST**

50 tablets 2 - Exempt P.T.

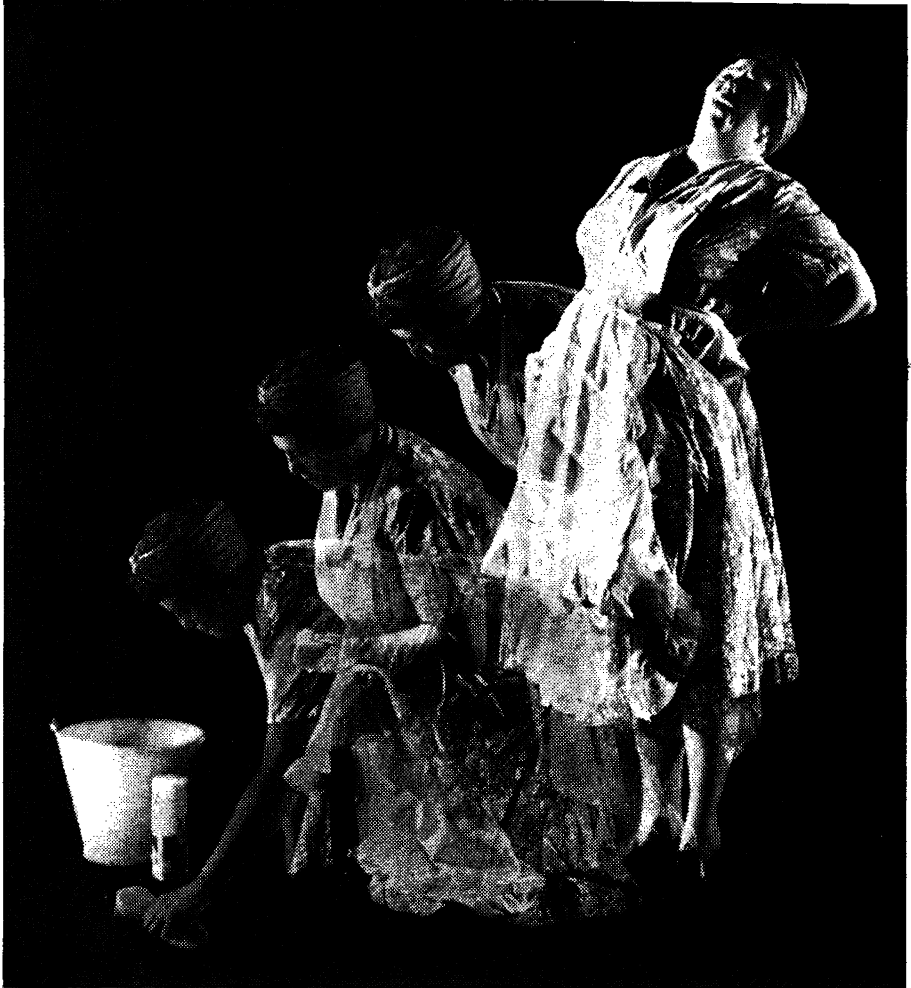
(From Dispensing Pack of 1000).

**CALMIC**

**CALMIC LIMITED CREWE CHESHIRE**

Telephone Crewe 3251 (7 lines)

LONDON : 2 Mansfield Street, W.1.



## TRANSVASIN RELIEVES MUSCLE SPASM

Muscle spasm caused by physical injury or rheumatic lesions is rapidly relieved by the application of Transvasin. The esters of nicotinic, salicylic and p-amino benzoic acids penetrate the skin and are concentrated at the point of injury. Transvasin is an effective and economical therapy.

*Transvasin contains ethyl and n-hexyl nicotinate, ethyl p-amino-benzoate, 2% each and tetrahydrofurfuryl salicylate 14%. In tubes of 30 G. at a basic NHS cost of 2/6.*

**LLOYD-HAMOL LIMITED**  
**11 WATERLOO PLACE, LONDON S.W.1** (LH)

# DROITWICH SPA

## ST. ANDREWS' BRINE BATHS

For the treatment of Rheumatic and Locomotor Disorders. Full range of treatments : Hydrotherapy, Physiotherapy, Large Heated Pool and Remedial Exercise Pool afford complete buoyancy.

### USE DROITWICH BUOYANT BRINE AND ASSOCIATED TREATMENTS FOR MUSCULAR RE-EDUCATION

FIRST-CLASS HOTELS AND BOARDING HOUSES IN RESTFUL SURROUNDINGS  
OPEN AIR SEA-BATHING LIDO-SET IN DELIGHTFUL PARKLAND

WITHIN EASY REACH OF SHAKESPEARE LAND, THE COTSWOLDS AND MALVERNS

*Illustrated brochure and medical information leaflet free from :*  
R. CAREY, SPA ASSOCIATION, DROITWICH, WORC.

## ABSTRACTS of WORLD MEDICINE

*The selective abstracting journal*

Concise  
Readable  
Accurate

Covering the whole field of clinical medicine and many allied subjects, including *rheumatic diseases*, in each monthly issue.

*Annual Subscription (12 issues) £4 4s. (U.S.A. and Canada \$13.50) Single copies 8s. 6d.*

Write to the Subscription Manager:

**ABSTRACTS OF WORLD MEDICINE**  
B.M.A. House, Tavistock Square, London, W.C.1